

FOR LEASE

OLY FED BUILDING

907 YELM AVE W, YELM, WA



*Small office space with BIG visibility in
Olympia Federal Savings Building at
Eagle Plaza*

Suite A 900 SF

\$1,820 per month (includes utilities)

Excellent visibility and plenty of natural light

Open layout and a private restroom

Space is suitable for low-traffic businesses that do not compete
with banking services only

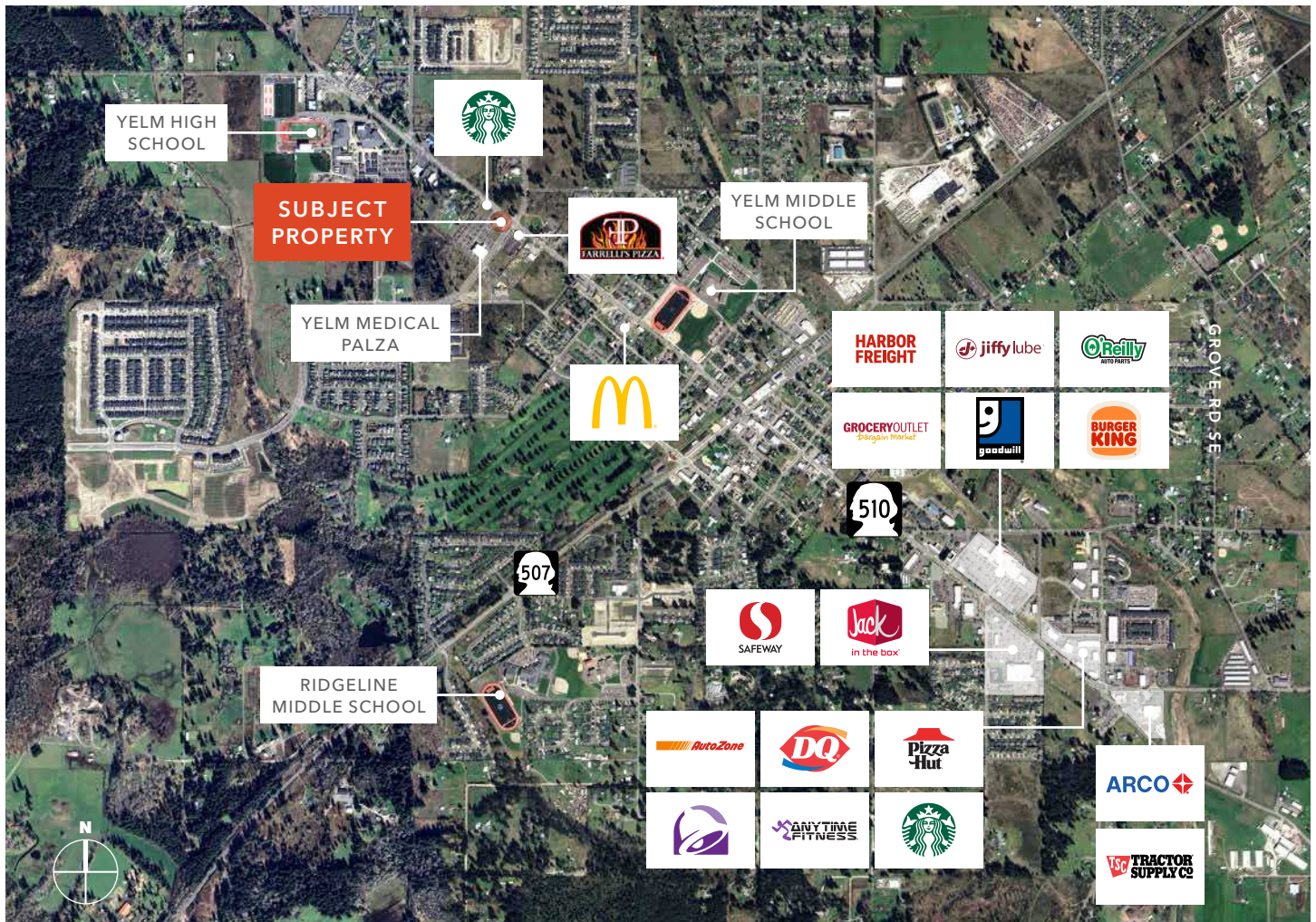
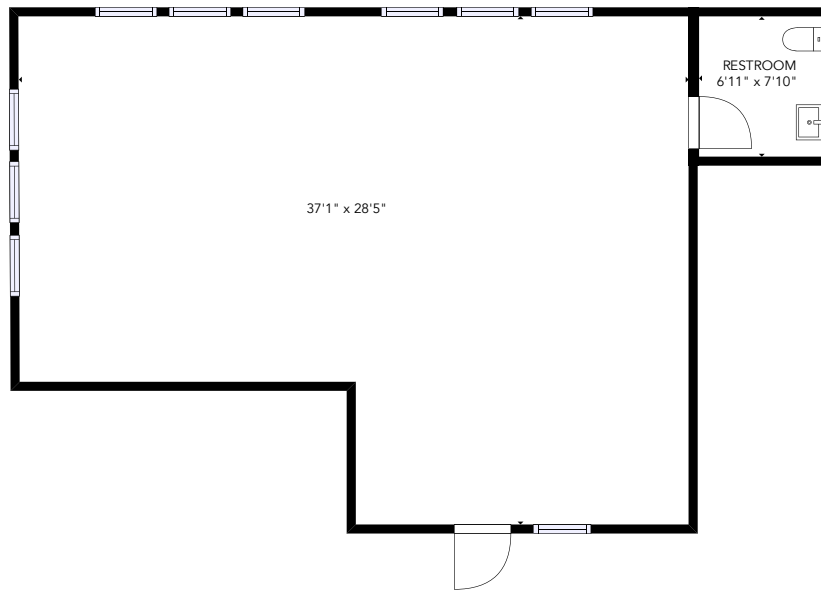
AMY HARDING
406.260.5530
amy.harding@kiddermathews.com

KIDDER.COM

This information supplied herein is from sources we deem reliable. It is provided without any representation, warranty, or guarantee, expressed or implied as to its accuracy. Prospective Buyer or Tenant should conduct an independent investigation and verification of all matters deemed to be material, including, but not limited to, statements of income and expenses. Consult your attorney, accountant, or other professional advisor.

km Kidder
Mathews

OLY FED BUILDING



KIDDER.COM

This information supplied herein is from sources we deem reliable. It is provided without any representation, warranty, or guarantee, expressed or implied as to its accuracy. Prospective Buyer or Tenant should conduct an independent investigation and verification of all matters deemed to be material, including, but not limited to, statements of income and expenses. Consult your attorney, accountant, or other professional advisor.