

FOR LEASE

Jills Court Industrial Park
Bellingham, WA 98226
Suites 102 & 107

Industrial Units with Office Space
2 Units of Approx. 2,500 SF
\$0.95 PSF + NNN
On-site Parking



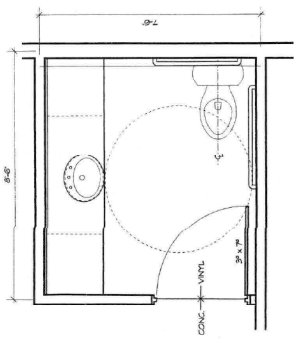
Located in the Hannegan area Industrial Park, this 8-unit high-quality Industrial building with Office Space. Quiet neighborhood with plenty of parking on-site.

Brian Finnegan, CCIM
Office: 360.647.2856
brian@westcomproperties.com
www.westcomproperties.com

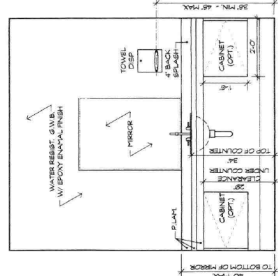
WestCom
PROPERTIES, INC



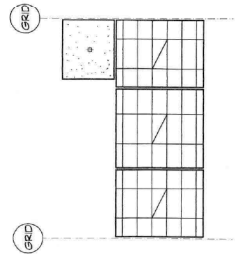
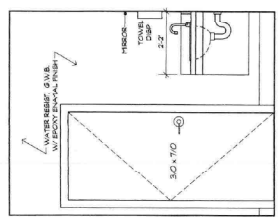
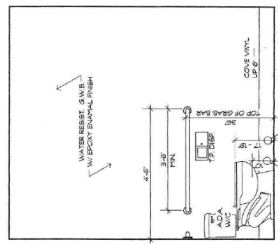
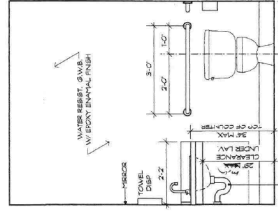




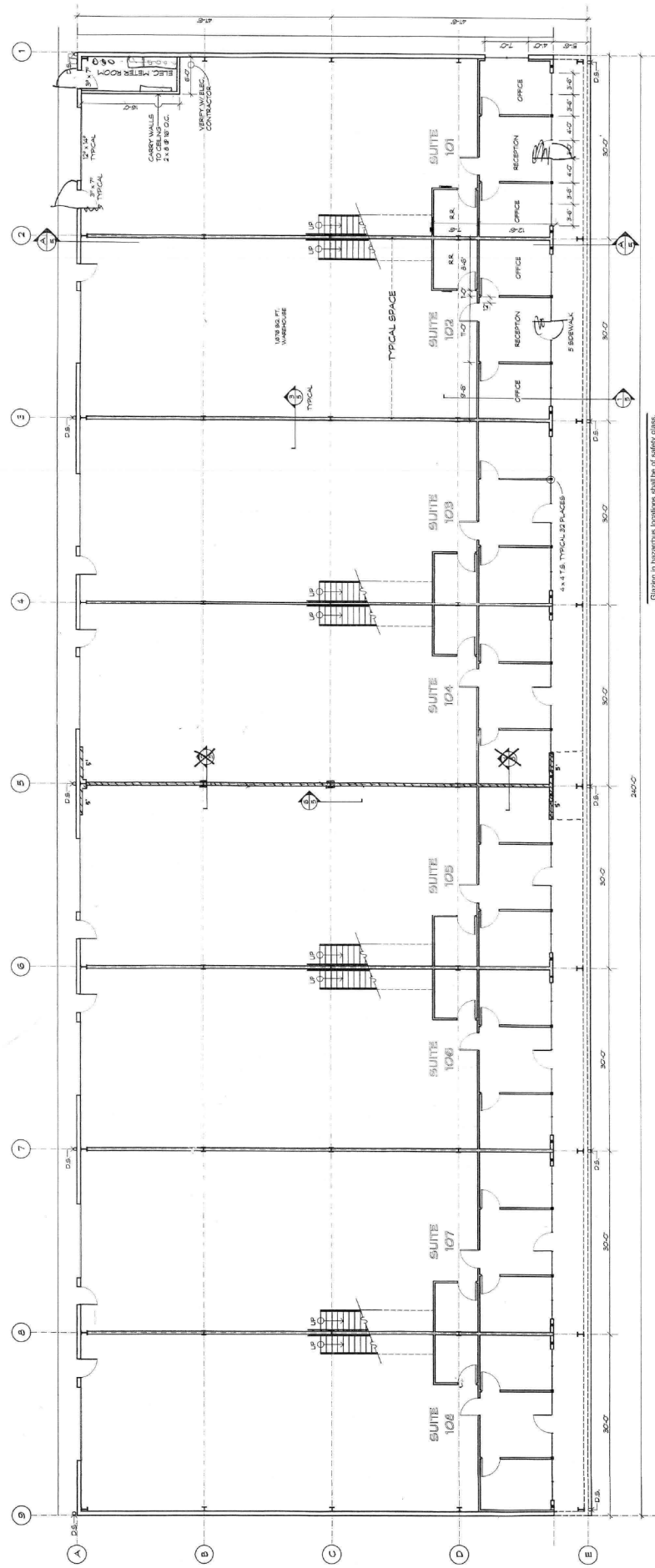
TYPICAL RESTROOM PLAN
SCALE 1/2" = 1'-0"



TYPICAL RESTROOM ELEVATIONS
SCALE 1/2" = 1'-0"



TYPICAL REFLECTED CEILING
SCALE 1/8" = 1'-0"



FLOOR PLAN
SCALE 1/8" = 1'-0"

OCCUPANCY PERMIT REQUIRED. SEPARATE OCCUPANCY PERMIT REQUIRED FOR EACH SUITE. OCCUPANCY CONDITIONS MAY BE KEYS - SEE PERMIT CONDITIONS.

Glazing in hazardous locations shall be of safety glass. Each light of safety glazing shall be identified by a permanent label after installation.

IBC SECTION 408.2