

FOR LEASE

# 911 E PINE ST

*2,903 SF of Retail and Basement Space for  
Lease at the Oddfellows Building in Capitol Hill*

SEATTLE, WA 98122



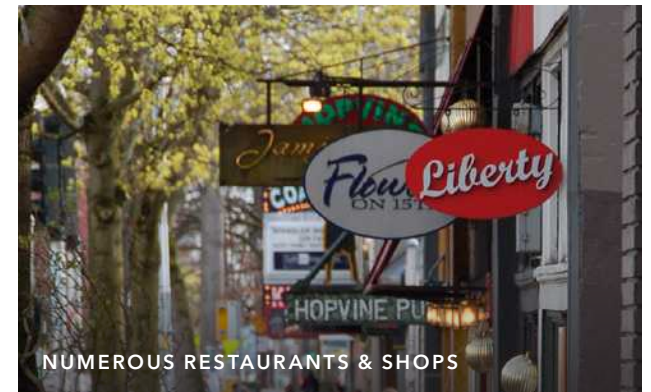
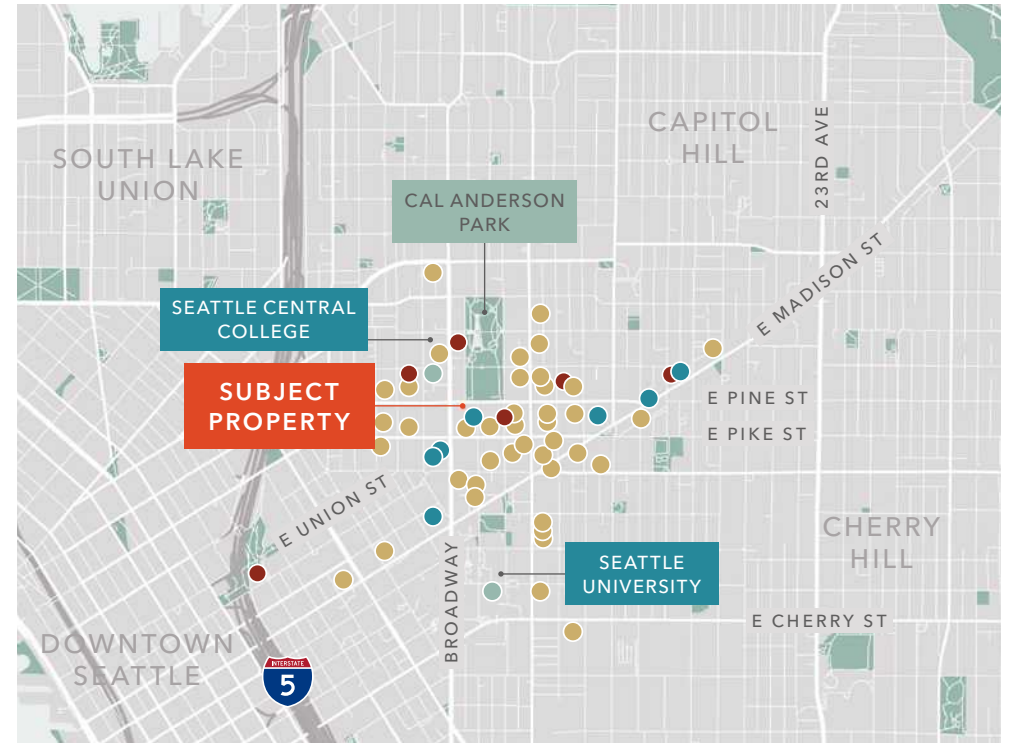
KIDDER.COM

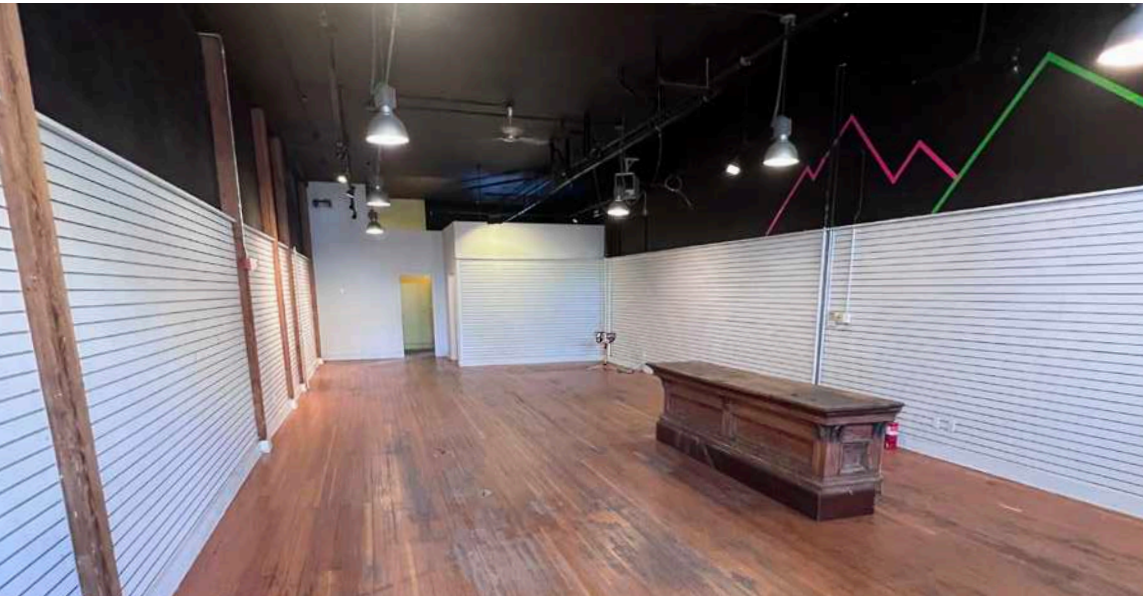
**km** Kidder  
Mathews

# CAPITOL HILL IS ONE OF SEATTLE'S *MOST POPULATED* NEIGHBORHOODS

*Capitol Hill stands out as a vibrant and desirable neighborhood that hosts numerous boutiques and shops, providing a diverse retail experience.*

Located in the vibrant heart of Capitol Hill within the charming and historic Oddfellows Building, this property boasts exceptional visibility and outstanding potential for retail businesses ready to flourish.





*Retail opportunity in the heart of Seattle's vibrant Pike Pine neighborhood at the charming and historic Oddfellows Building*

#### PROPERTY HIGHLIGHTS

2,903 SF available, 1,807 SF of ground level space and 1,096 SF of basement space

Capitol Hill is known for its eclectic retail, hip restaurant, and lively bar and music scene

Located across from Cal Anderson Park

1 block to Seattle Central College and 3 blocks to the light rail

Densely populated area and strong demographics

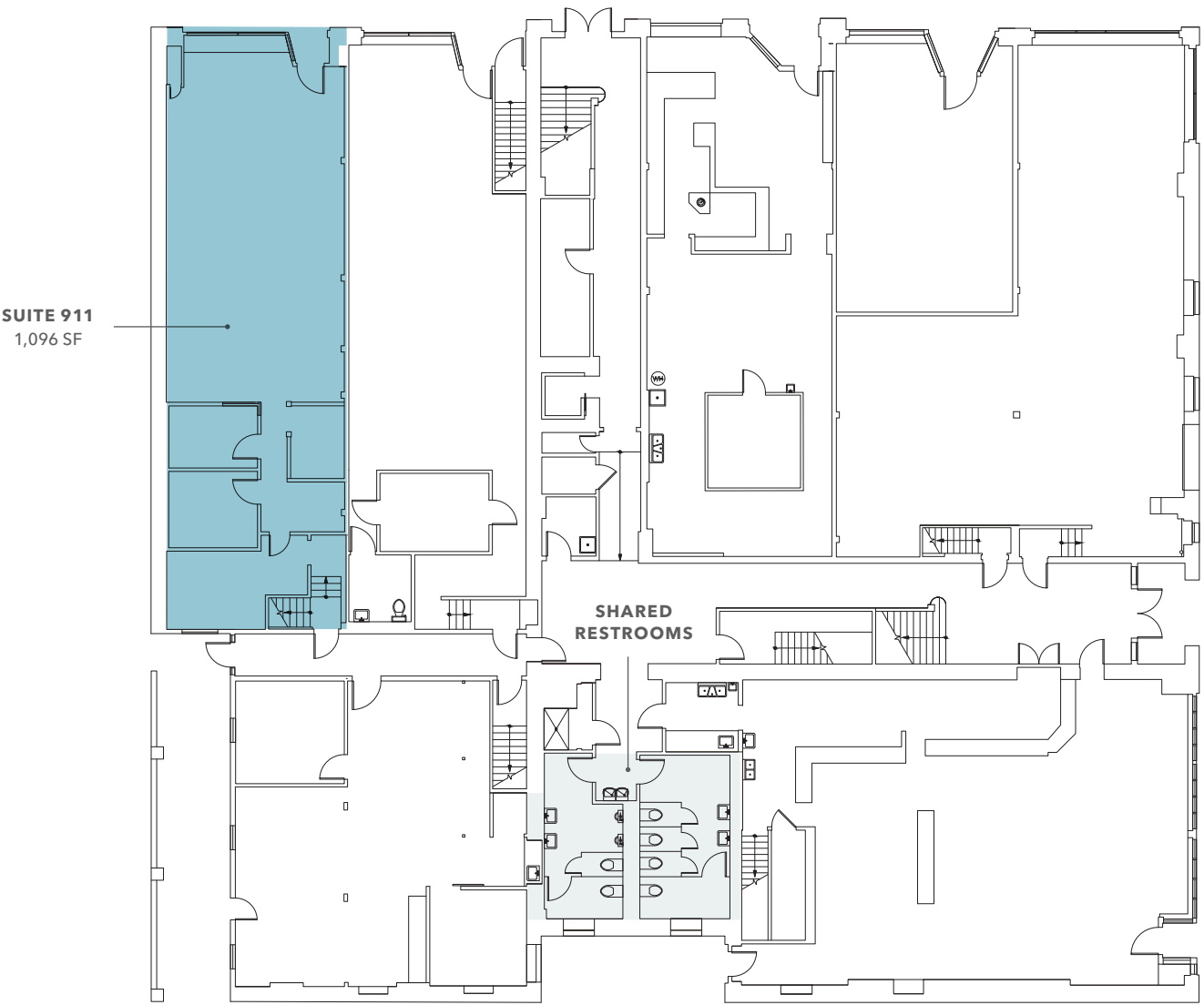
Co-tenants include Century Ballroom, Oddfellows Cafe, Molly Moons, Le Labo, and Tin Table

\$3,991.63 per month + \$2,199 NNN (NNN charged on ground level space)

**\$16.50/SF**  
BLENDED RATE

**\$14.60**  
NNN

# FIRST FLOOR PLAN



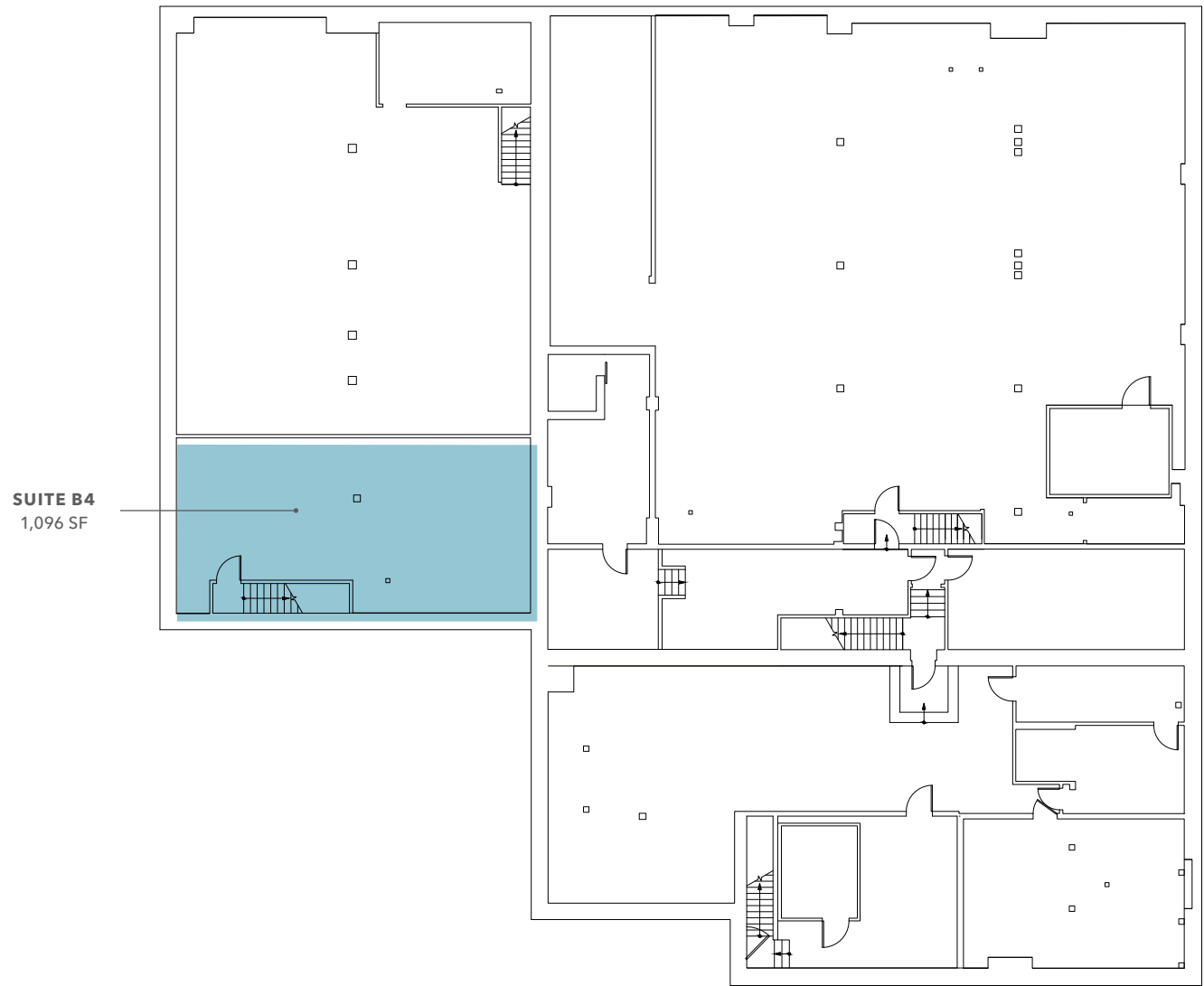
1,807 SF

AVAILABLE

NOW

AVAILABLE

# BASEMENT FLOOR PLAN



SUITE B4  
1,096 SF

1,096 SF

AVAILABLE

NOW

AVAILABLE





# DEMOGRAPHICS

## POPULATION

	1 Mile	3 Miles	5 Miles
2010 CENSUS	58,666	180,184	382,529
2020 CENSUS	85,877	239,925	482,870
2024 ESTIMATED	99,738	267,054	517,538
2029 PROJECTED	111,707	292,546	554,695

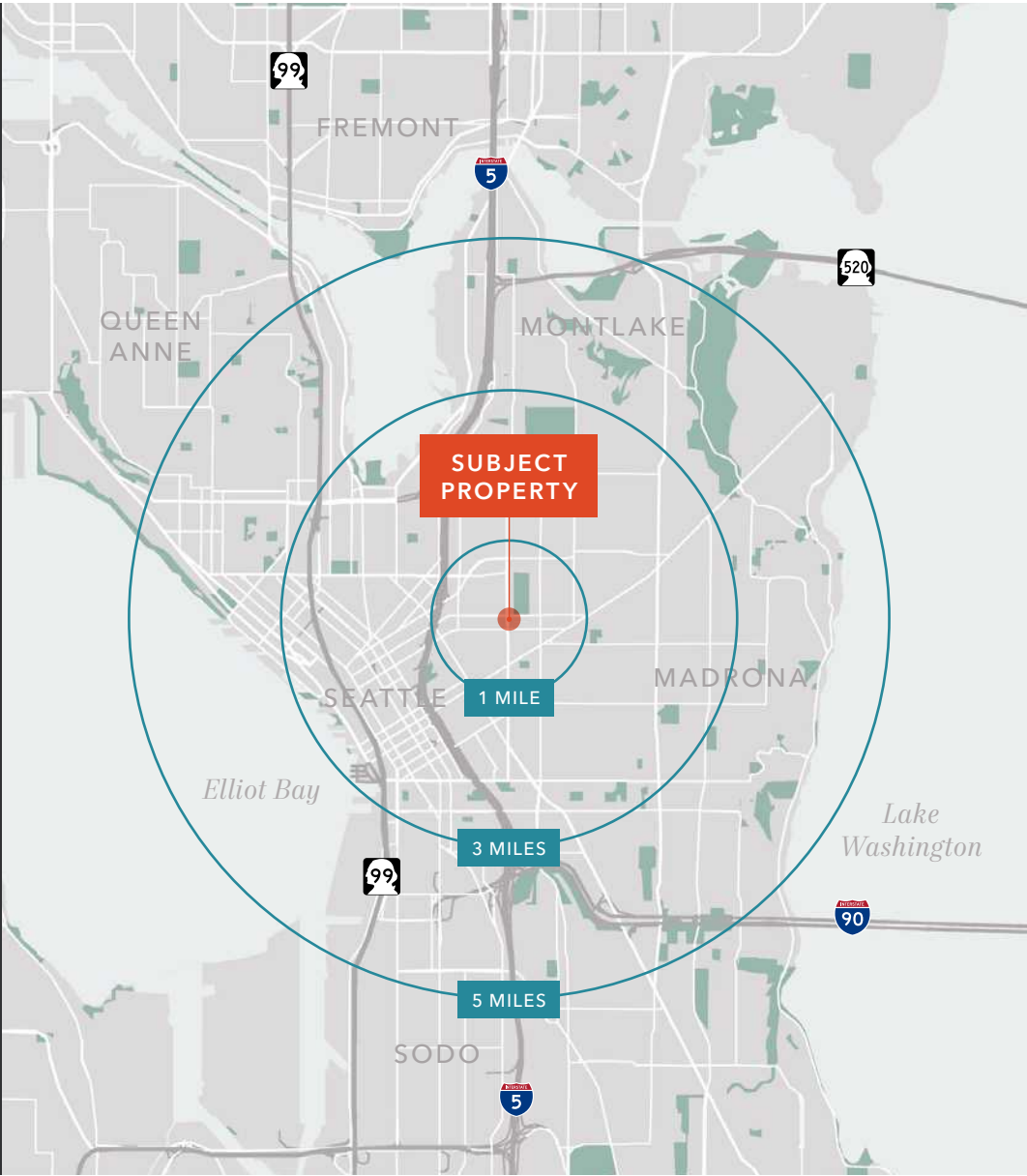
## HOUSEHOLDS

	1 Mile	3 Miles	5 Miles
2010 CENSUS	34,515	97,338	185,577
2020 CENSUS	51,677	130,953	237,196
2024 ESTIMATED	61,947	149,324	261,582
2029 PROJECTED	68,535	162,307	279,669

## HOUSEHOLD INCOME

	1 Mile	3 Miles	5 Miles
2024 MEDIAN	\$119,970	\$130,543	\$137,694
2029 MEDIAN PROJECTED	\$125,744	\$134,896	\$141,364
2024 AVERAGE	\$164,185	\$186,137	\$194,877
2029 AVERAGE PROJECTED	\$173,768	\$194,824	\$203,402

Data Source: ©2025, Sites USA



# 911 E PINE ST

*Exclusively leased by*

**KELLY GADDIS**  
Senior Vice President  
425.450.1136  
kelly.gaddis@kidder.com

**MIA PONCE**  
Senior Associate  
425.450.1137  
mia.ponce@kidder.com

**KIDDER.COM**

This information supplied herein is from sources we deem reliable. It is provided without any representation, warranty, or guarantee, expressed or implied as to its accuracy. Prospective Buyer or Tenant should conduct an independent investigation and verification of all matters deemed to be material, including, but not limited to, statements of income and expenses. Consult your attorney, accountant, or other professional advisor. All Kidder Mathews designs are the sole property of Kidder Mathews. Branded materials and layouts are not authorized for use by any other firm or person.

