

*For Lease*

# MILGARD MEDICAL PAVILION

SPEC SUITE COMPLETED

11511 CANTERWOOD BLVD NW  
GIG HARBOR, WA

OWNED & MANAGED BY

**Well  
tower**

**km** Kidder  
Mathews



# ADVANCE CARE EXCEPTIONAL CONVENIENCE

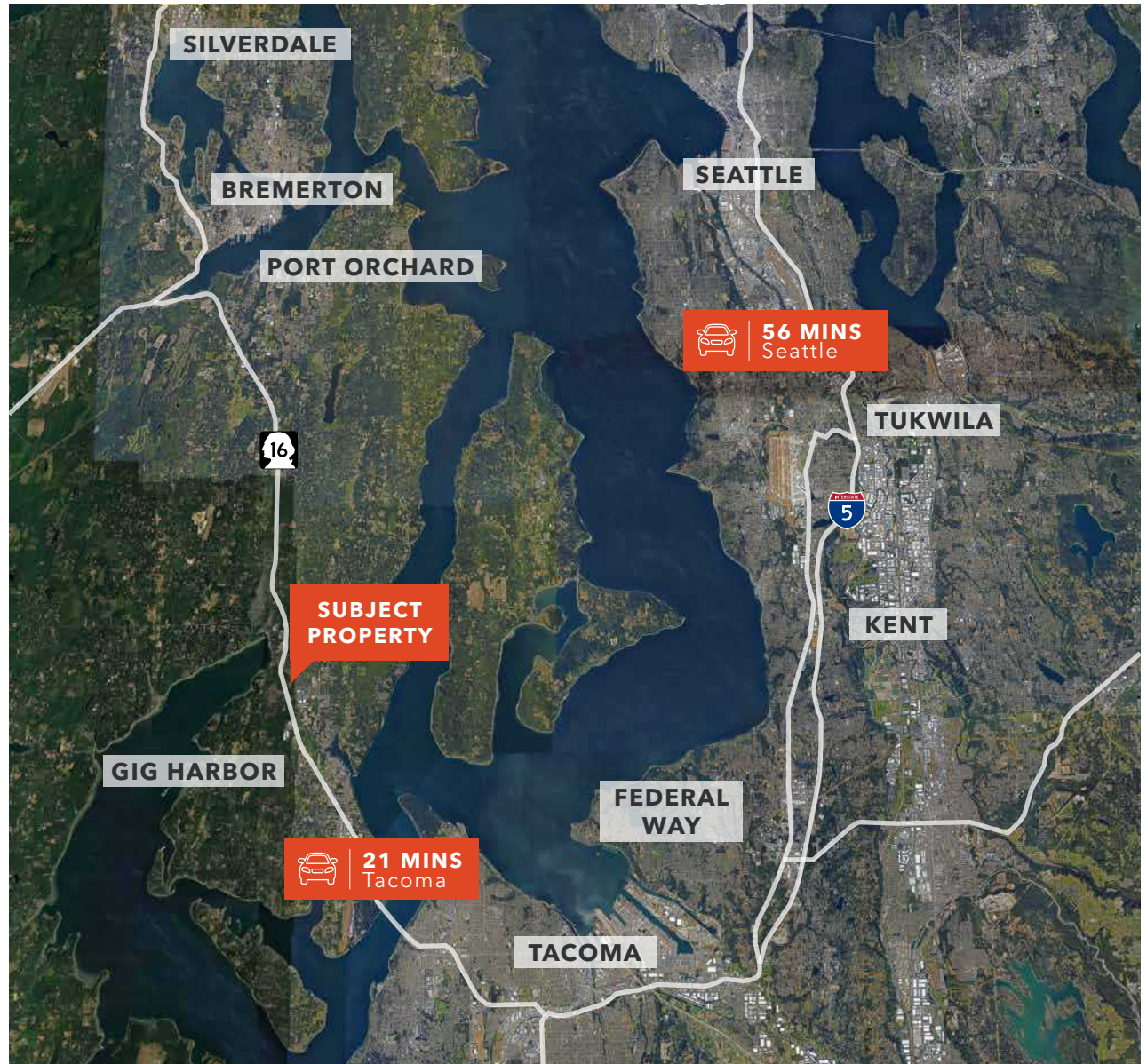
Patient centered approach with on-site amenities, including ample parking, pharmacy, cafe, and gift shop

Healthcare Synergy - Located on the St. Anthony's Hospital Campus

Conveniently located off Hwy 16 and Burnham/Borgen exit

**21 MIN**  
TACOMA

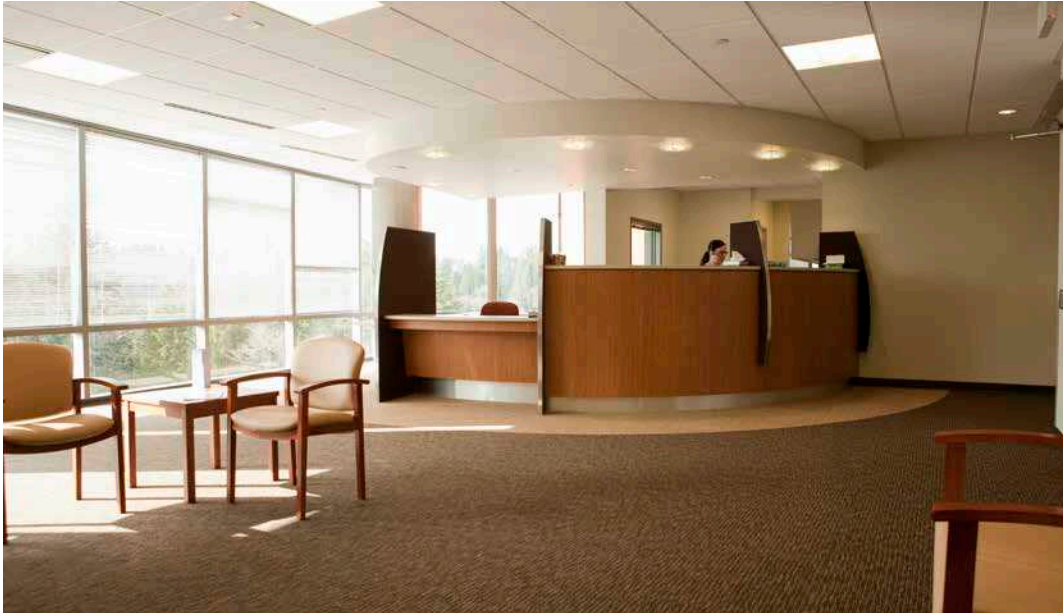
**8 MIN**  
DOWNTOWN  
GIG HARBOR





## *Milgard Medical Pavillion*

---



# SUITE 120

Sublease available through 6.30.2027.

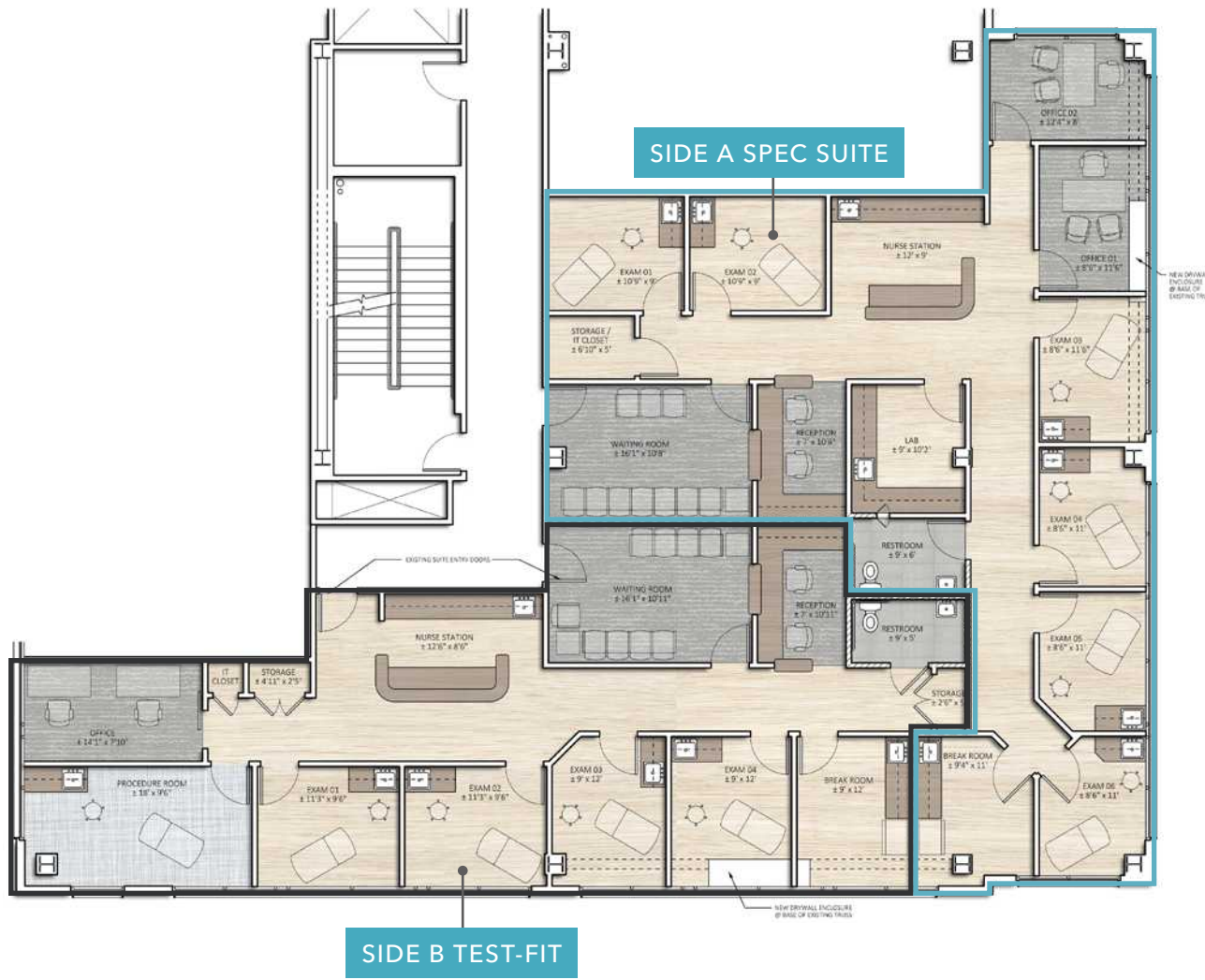


2,123 SF

AVAILABLE

- 4 Exam Rooms
- 2 Private Offices
- 1 Conference Room
- 1 Sterilization Room
- 1 Lab Room
- Spacious Waiting/Reception area

# SUITE 250



4,002 SF

AVAILABLE

2,107 SF

SUITE 250A SPEC SUITE

1,895 SF

SUITE 250B



TAKE  
VIRTUAL  
TOUR



Milgard Medical Pavillion



DIRECT ACCESS  
TO ST. ANTHONY  
HOSPITAL



CENTRALLY  
LOCATED WITHIN  
SOUTH PUGET  
SOUND



STATE-OF-THE ART  
MEDICAL FACILITY



HEALTHCARE  
SYNERGY





## LOCATION OVERVIEW



**TRAFFIC**  
73,887

**SUBJECT  
PROPERTY**

ST. ANTHONY  
HOSPITAL

CANTERWOOD  
COUNTRY CLUB

BORGEN BLVD

FAMILY  
YMCA

## BORGEN BLVD SHOPPING CENTER



CHASE



**COSTCO**  
WHOLESALE



Walgreens



Papa Murphy's  
PIZZA & SUBS



**BIG 5**  
SPORTSWEAR

Office DEPOT  
OfficeMax

petco

KeyBank





# MILGARD MEDICAL PAVILLION

OWNED & MANAGED BY

**Well  
tower**

EXCLUSIVELY LEASED BY

DREW FRAME, SIOR  
Kidder Mathews  
253.948.7032  
[drew.frame@kidder.com](mailto:drew.frame@kidder.com)

WILL FRAME  
Kidder Mathews  
253.948.6895  
[will.frame@kidder.com](mailto:will.frame@kidder.com)

This information supplied herein is from sources we deem reliable. It is provided without any representation, warranty, or guarantee, expressed or implied as to its accuracy. Prospective Buyer or Tenant should conduct an independent investigation and verification of all matters deemed to be material, including, but not limited to, statements of income and expenses. Consult your attorney, accountant, or other professional advisor.

