



Office Spaces for Lease 1120 N Mullan Spokane Valley, WA

Levi McCormick
W: 509.868.2125
levi@sdsrealty.com

Carlos Herrera
C: 509.714.2593
carlos@sdsrealty.com

www.sdsrealty.com

SDS REALTY INC 108 N WASHINGTON #600, SPOKANE WA. 99201

This information has been secured from sources we believe to be reliable, but we make no representations or warranties, express or implied, as to the accuracy of the information. References to square footage or age are approximate. Buyer/tenant must verify the information and bears all risks for any inaccuracies.

SUITES FOR LEASE

Carlos Herrera
C: 509.714.2593
carlos@sdsrealty.com

Levi McCormick
W: 509.868.2125
levi@sdsrealty.com



Lease Rate:

\$15/SF/Year

Full Service

(Tenant pays Janitorial)

Easy Access to I-90

Ample Parking On-Site

Signage Available

Suite 202+/- 2,185 RSF

- **6 Private Offices**
- **Conference Room**
- **Reception Area**
- **Open work Area**
- **Waiting Area**
- **Kitchenette**
- **Storage/It room**

Suite 210+/- 1,725 RSF

- **5 Private Offices**
- **Conference Room**
- **Reception Area**
- **Break room**
- **Storage Room**

Suite 120 +/- 1,824 RSF

- **4 Private Offices**
- **Conference Room**
- **Open work area**
- **Reception Area**
- **Kitchenette**

www.sdsrealty.com

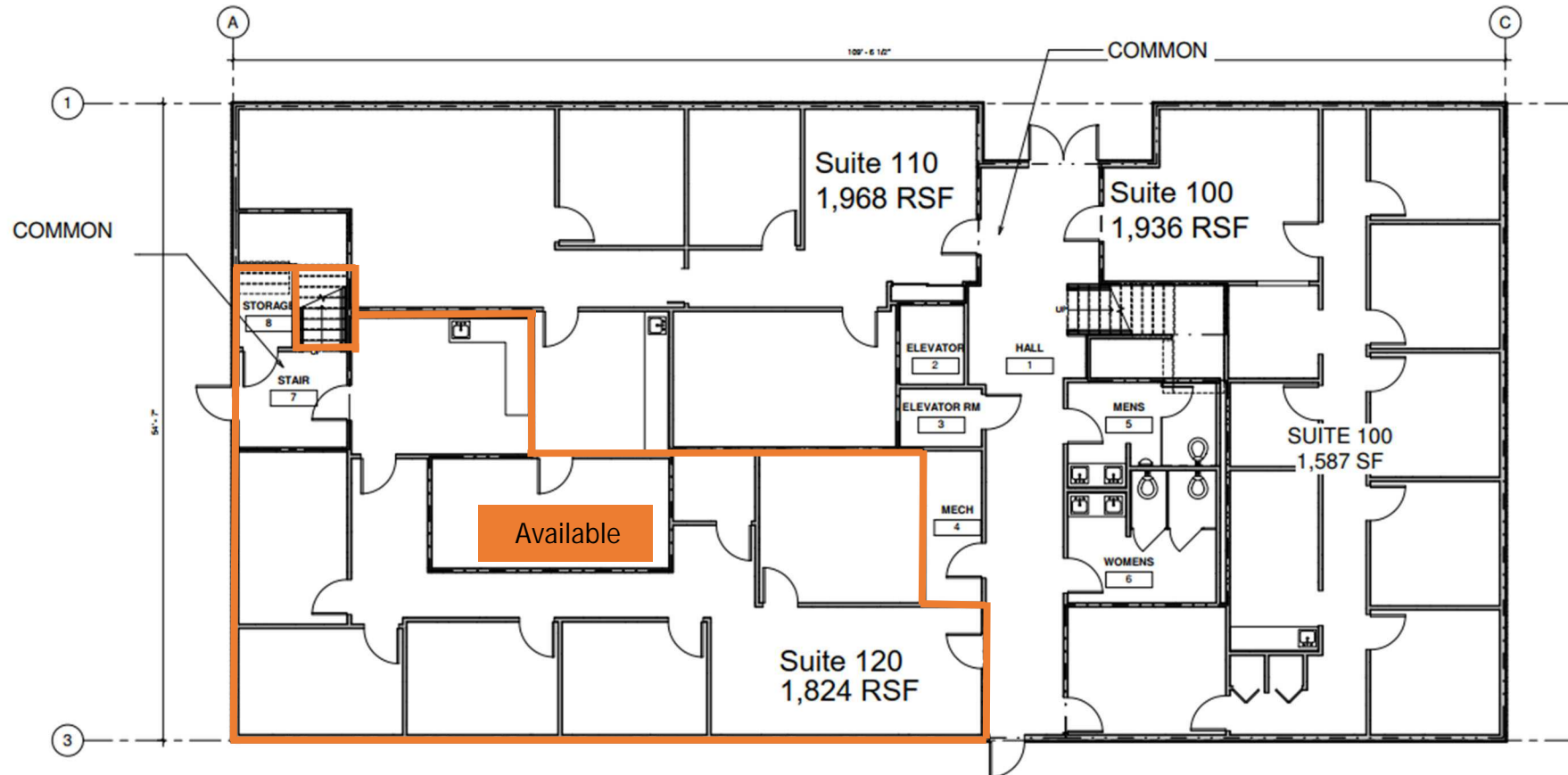
SDS REALTY INC 108 N WASHINGTON #600, SPOKANE WA. 99201

This information has been secured from sources we believe to be reliable, but we make no representations or warranties, express or implied, as to the accuracy of the information. References to square footage or age are approximate. Buyer/tenant must verify the information and bears all risks for any inaccuracies.

SUITES FOR LEASE

Carlos Herrera
C: 509.714.2593
carlos@sdsrealty.com

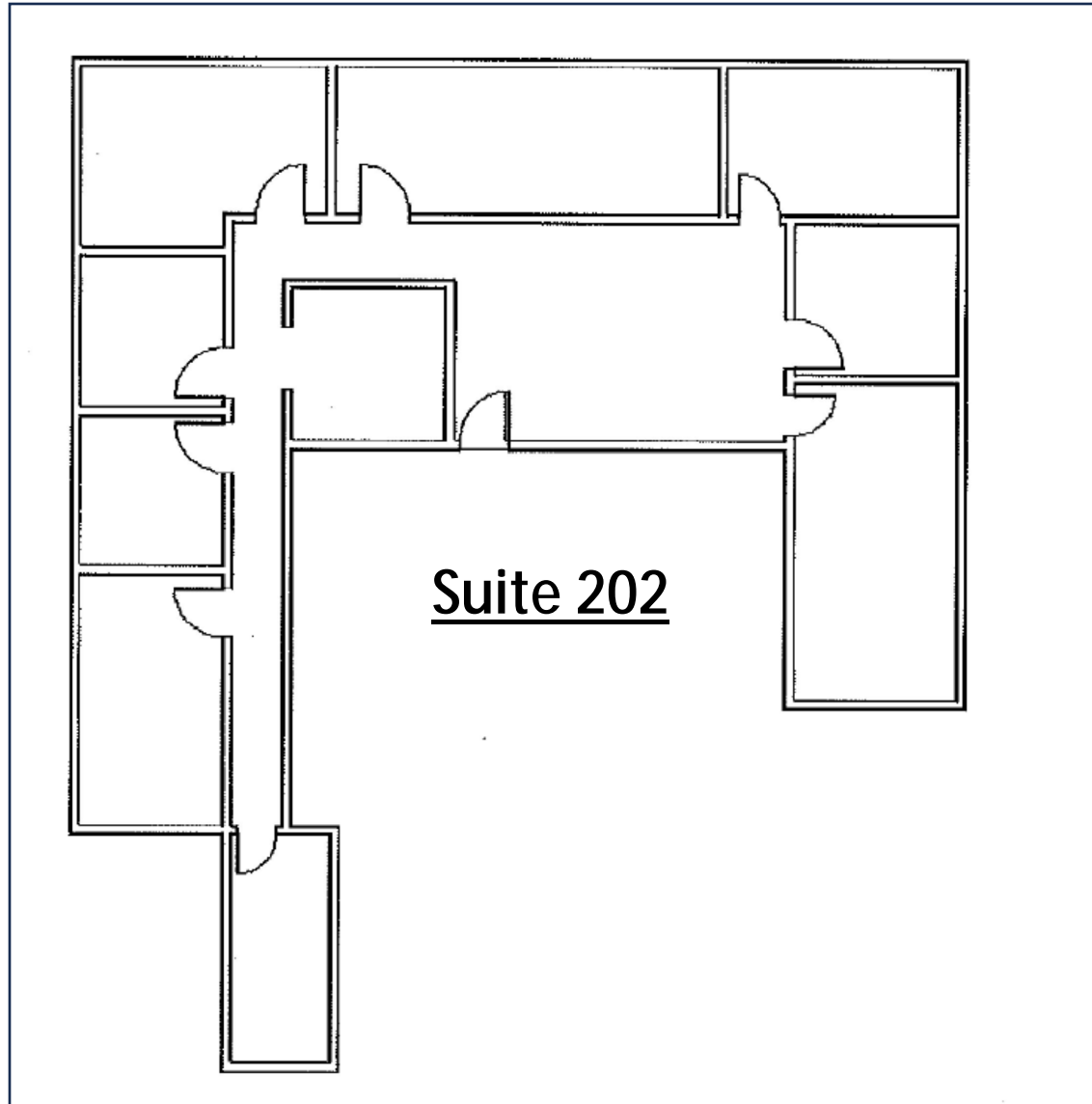
Levi McCormick
W: 509.868.2125
levi@sdsrealty.com



SUITES FOR LEASE

Carlos Herrera
C: 509.714.2593
carlos@sdsrealty.com

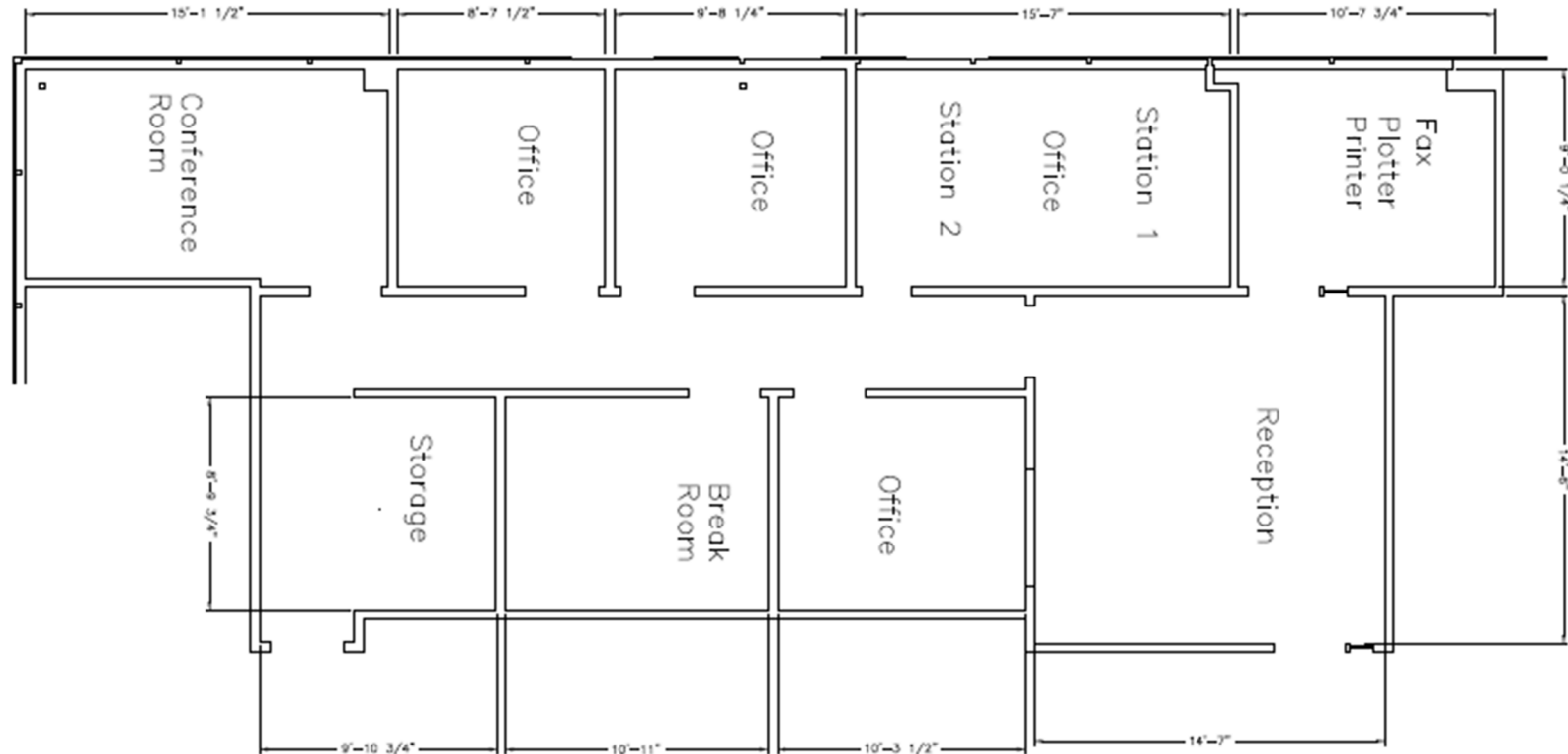
Levi McCormick
W: 509.868.2125
levi@sdsrealty.com



SUITES FOR LEASE

Carlos Herrera
C: 509.714.2593
carlos@sdsrealty.com

Levi McCormick
W: 509.868.2125
levi@sdsrealty.com



Suite 210