

FOR LEASE

# DES MOINES DENTAL BUILDING

*746 SF Professional Office Space  
Available Now in Des Moines*

22221 7TH AVE S | DES MOINES, WA







*Well-Kept Office Space for Lease in  
Downtown Des Moines*

First-floor office space

746 SF available

Prominent location

Walking distance to Des Moines Marina

Monument and/or building signage at east building  
entrance available

Quality open office space

Common area lobby as well as private suite  
entrance from street

\$1,200.00/Month, plus gas & electric

**746 SF**

FIRST-FLOOR  
OFFICE

**\$1,200**

PER MONTH (PLUS  
GAS & ELECTRIC)







# HIGHLY- DESIRABLE LOCATION

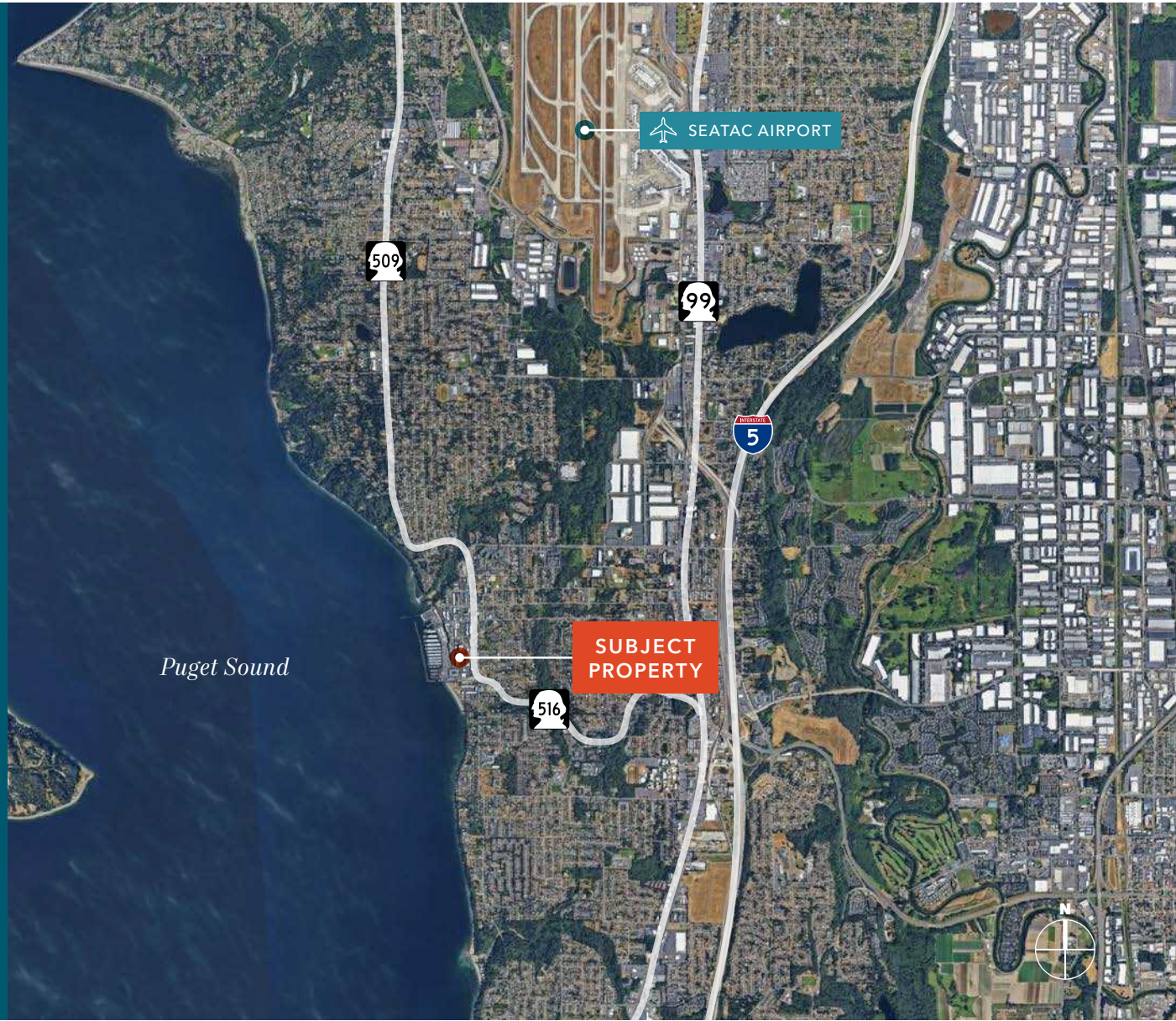
Close to Des Moines Marina

Conveniently located near Marine View  
Drive and SR-516

Easy for visitors to locate

8 MIN  
I-5

12 MIN  
SEATAC AIRPORT







## DES MOINES DENTAL BUILDING

*For more information on  
this property, please contact*

**BRIAN CLAPP**  
206.248.7316  
brian.clapp@kidder.com

**SPENCER CLAPP**  
206.248.7427  
spencer.clapp@kidder.com

**KIDDER.COM**

This information supplied herein is from sources we deem reliable. It is provided without any representation, warranty, or guarantee, expressed or implied as to its accuracy. Prospective Buyer or Tenant should conduct an independent investigation and verification of all matters deemed to be material, including, but not limited to, statements of income and expenses. Consult your attorney, accountant, or other professional advisor. All Kidder Mathews designs are the sole property of Kidder Mathews. Branded materials and layouts are not authorized for use by any other firm or person.

