

FOR LEASE

MADISON RIDGE OFFICE BUILDING

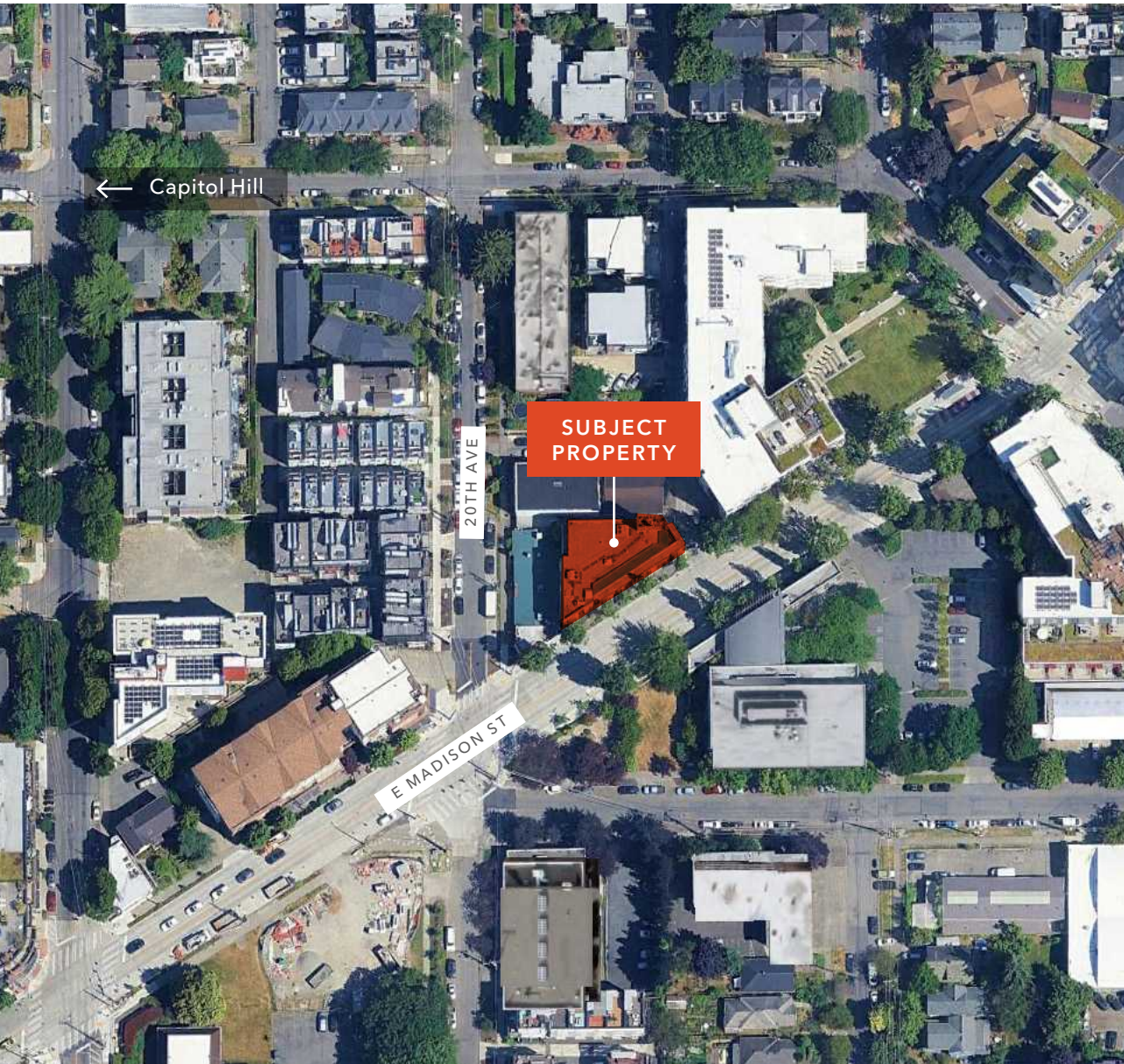
*Up to 10,794 SF of office space
available on the east side of
Capitol Hill*

2014 E MADISON ST, SEATTLE, WA 98122



KIDDER.COM

km Kidder
Mathews



*2,264 - 4,265 SF Office Spaces
Available for Lease in Capitol Hill*

PROPERTY OVERVIEW

Situated on the east side of Capitol Hill directly on Madison Street

Enhanced HVAC technology - GPS ionization system

Located on a bus line

Secure parking available in building and additional street parking in immediate vicinity

Excellent natural light

Building offers a mix of open work areas and offices

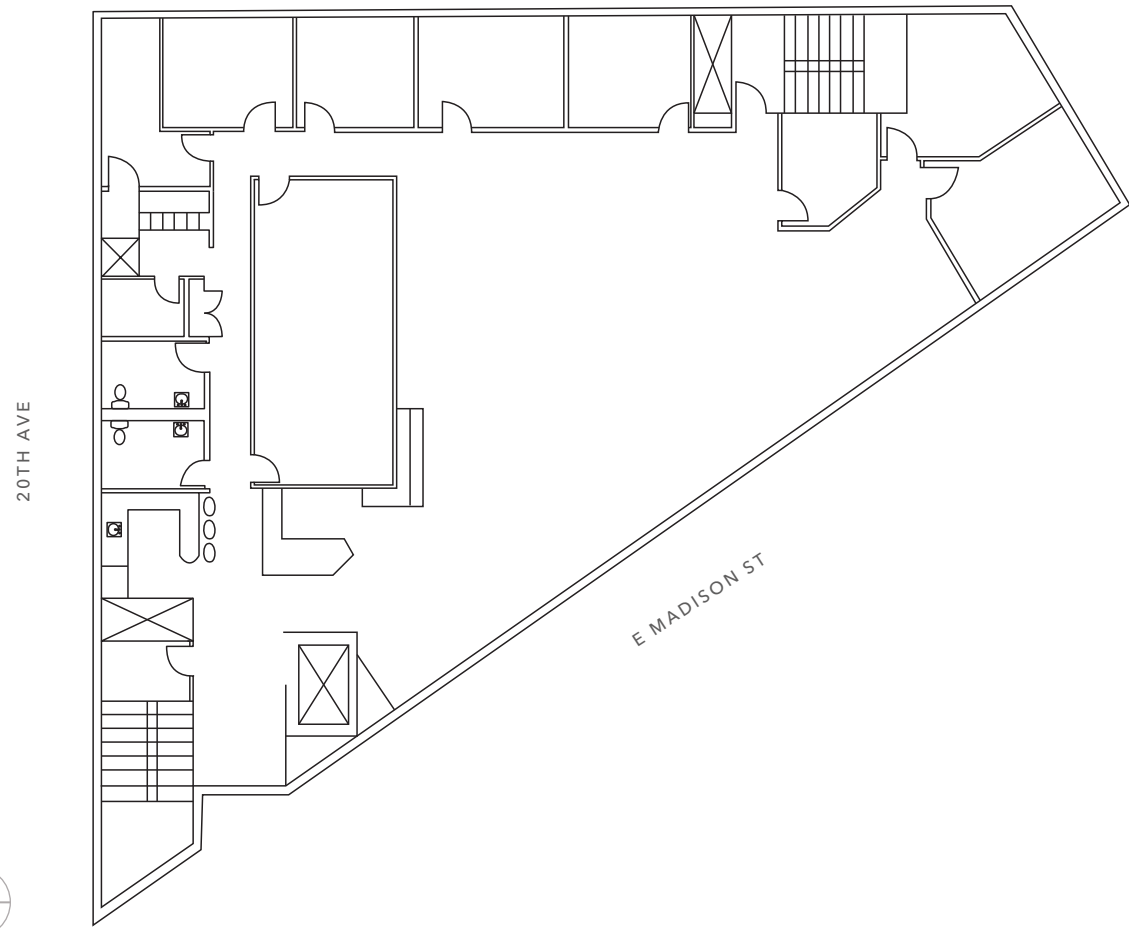
Highly efficient layout

Walk score of 90/100

\$17.00
BASE RENTAL RATE

\$16.00
NNN'S

SECOND FLOOR PLAN



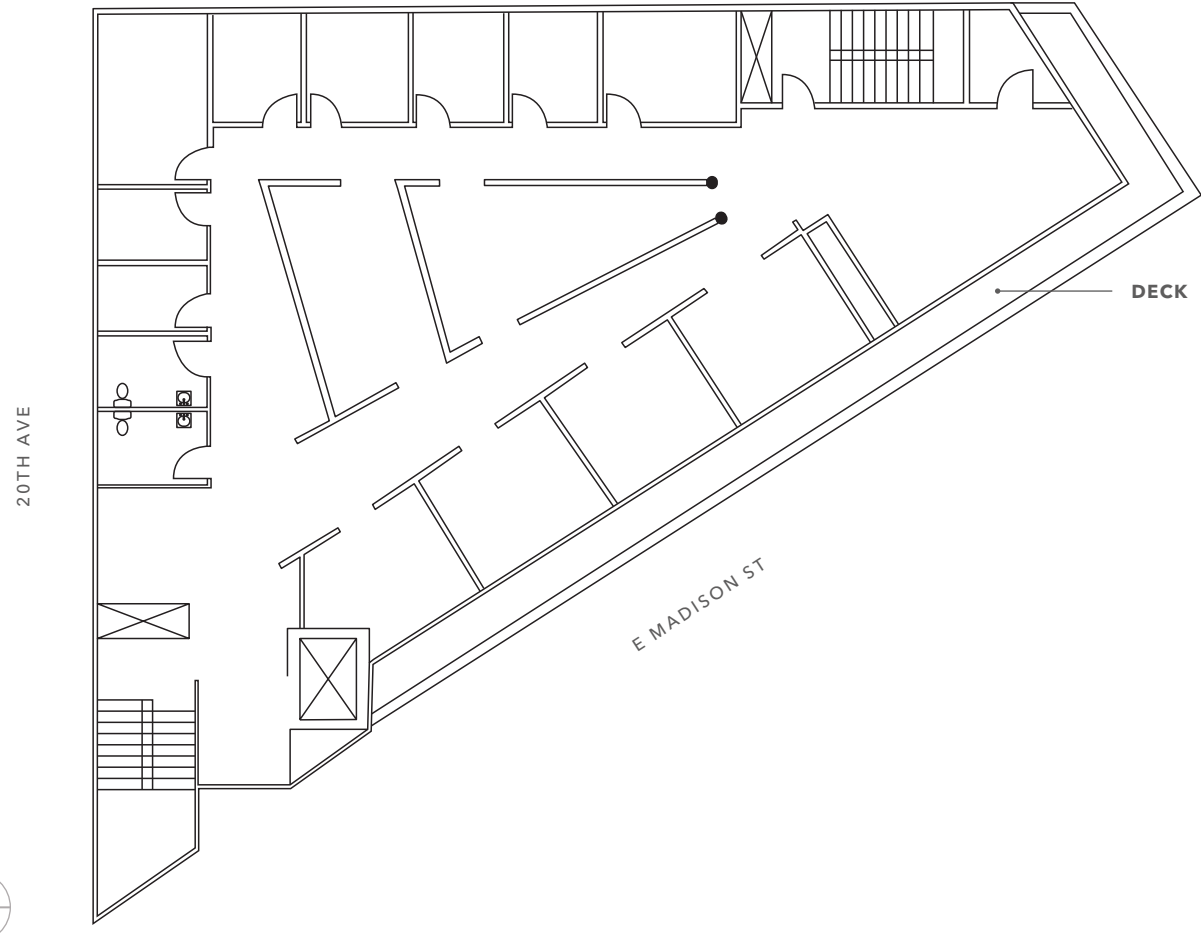
4,265 SF

AVAILABLE

NOW

AVAILABLE

THIRD FLOOR PLAN



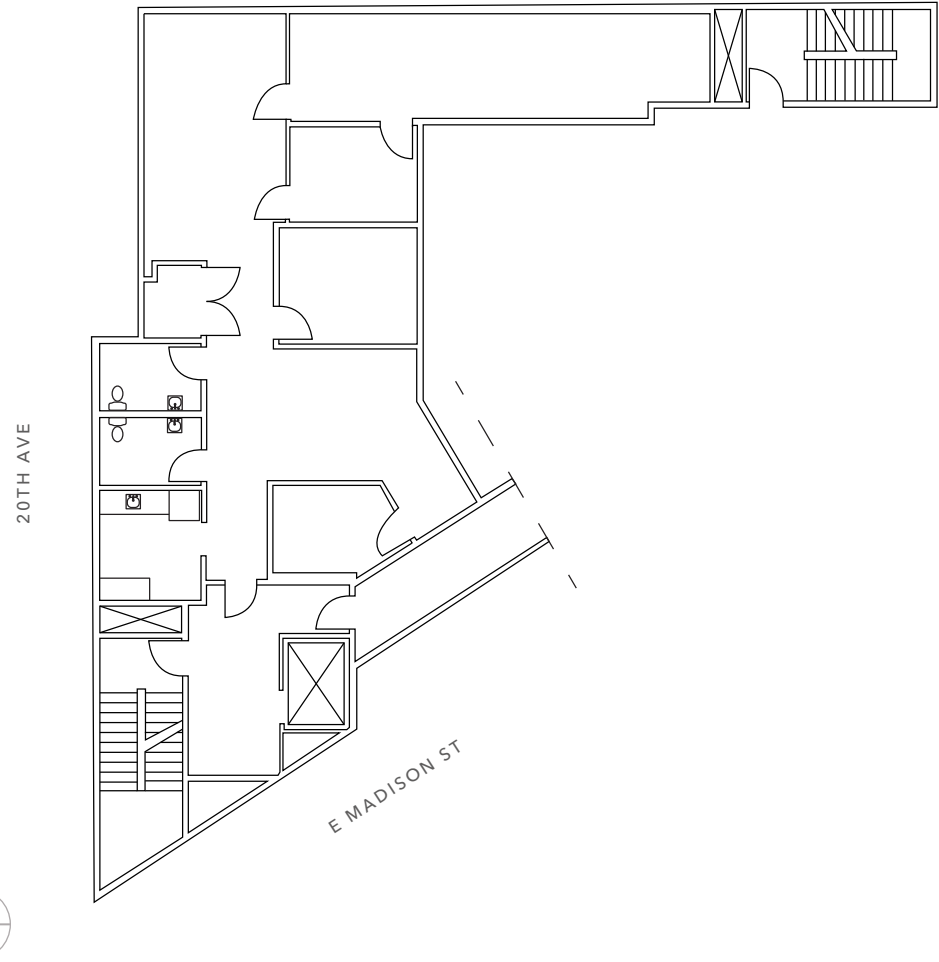
4,265 SF

AVAILABLE

NOW

AVAILABLE

FOURTH FLOOR PLAN



2,264 SF

AVAILABLE

NOW

AVAILABLE

HIGHLY- ACCESSIBLE LOCATION

East Madison Street is served by multiple bus routes and is close to the Capitol Hill Light Rail Station

Convenient access to I-5 and major thoroughfares for smooth commuting

Located in a highly walkable neighborhood with bike lanes and pedestrian-friendly routes

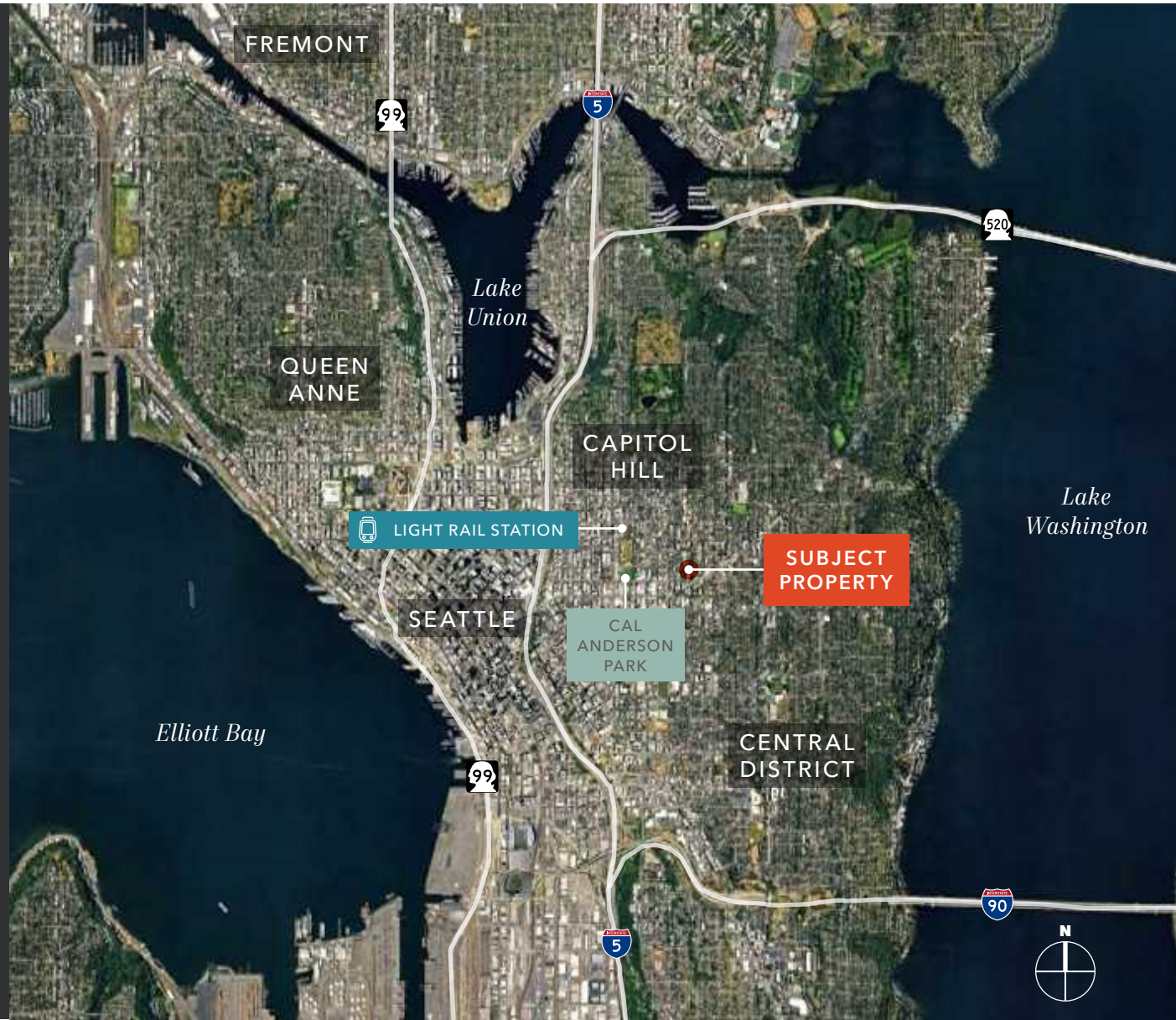
Various dining and entertainment options just minutes away

93

WALK SCORE

93

BIKE SCORE



MADISON RIDGE OFFICE BUILDING

Exclusively leased by

DAN STUTZ
Executive Vice President
206.398.2266
dan.stutz@kidder.com

KIDDER.COM

This information supplied herein is from sources we deem reliable. It is provided without any representation, warranty, or guarantee, expressed or implied as to its accuracy. Prospective Buyer or Tenant should conduct an independent investigation and verification of all matters deemed to be material, including, but not limited to, statements of income and expenses. Consult your attorney, accountant, or other professional advisor. All Kidder Mathews designs are the sole property of Kidder Mathews. Branded materials and layouts are not authorized for use by any other firm or person.

