



# EAST GILMAN PROFESSIONAL BUILDING

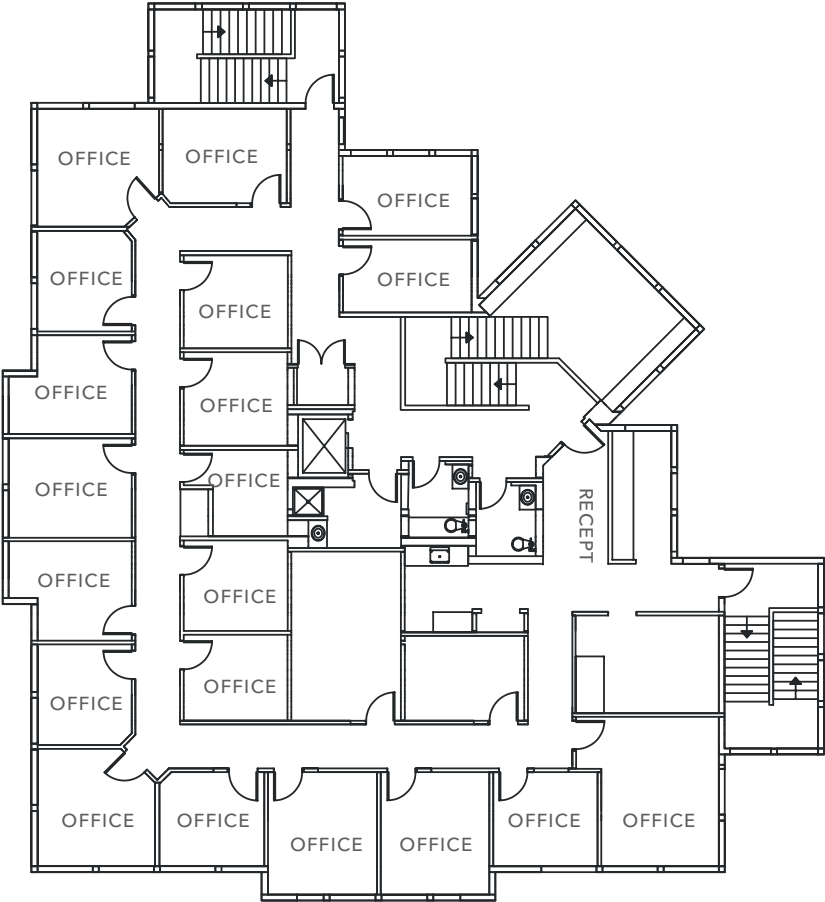
*5,246 SF Office Space Available  
for Lease in Downtown Issaquah*

295 NE GILMAN BLVD, ISSAQUAH, WA



# FLOOR PLAN

SUITE 201



KIDDER.COM

This information supplied herein is from sources we deem reliable. It is provided without any representation, warranty, or guarantee, expressed or implied as to its accuracy. Prospective Buyer or Tenant should conduct an independent investigation and verification of all matters deemed to be material, including, but not limited to, statements of income and expenses. Consult your attorney, accountant, or other professional advisor. All Kidder Mathews designs are the sole property of Kidder Mathews. Branded materials and layouts are not authorized for use by any other firm or person.



ADDRESS	295 NE Gilman Blvd, Issaquah, WA
SUITE 201	5,246 SF
PARKING	3.8/1,000
LEASE RATE	Call Broker

*Exclusively leased by*

AARON KRAFT  
425.283.8676  
aaron.kraft@kidder.com

