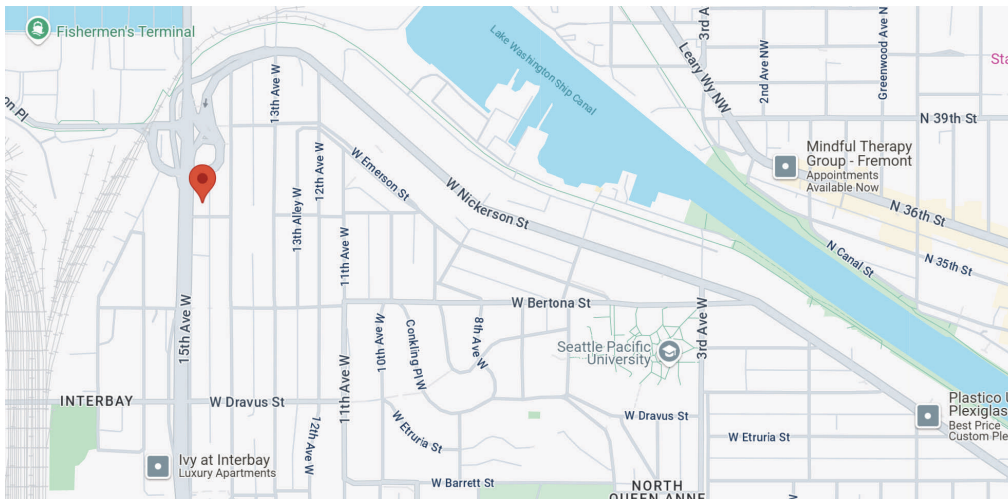
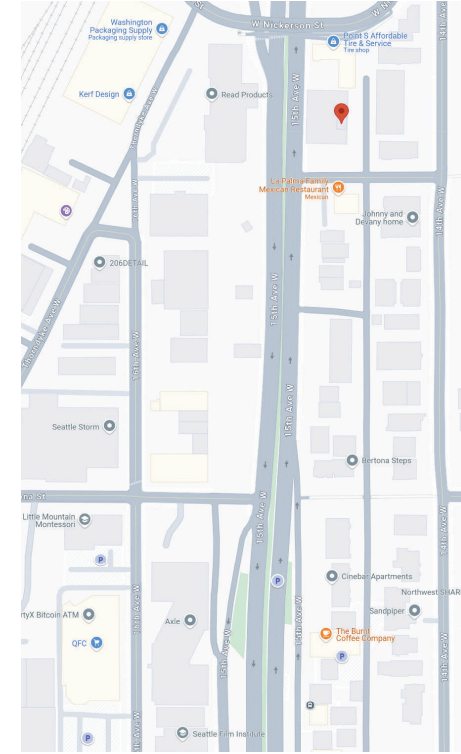


# FOR LEASE

AFFORDABLE OFFICE SPACE WITH PARKING INTERBAY  
3600 15TH AVENUE WEST | SEATTLE, 98119



## PROPERTY FEATURES

- 1,875 sf of affordable office w/ parking
- Just south of the Ballard Bridge at the base of Queen Anne
- Space has reception, 5 private offices, and open area
- Quiet building located on the 2nd floor
- Unit comes with three (3) reserved parking stalls

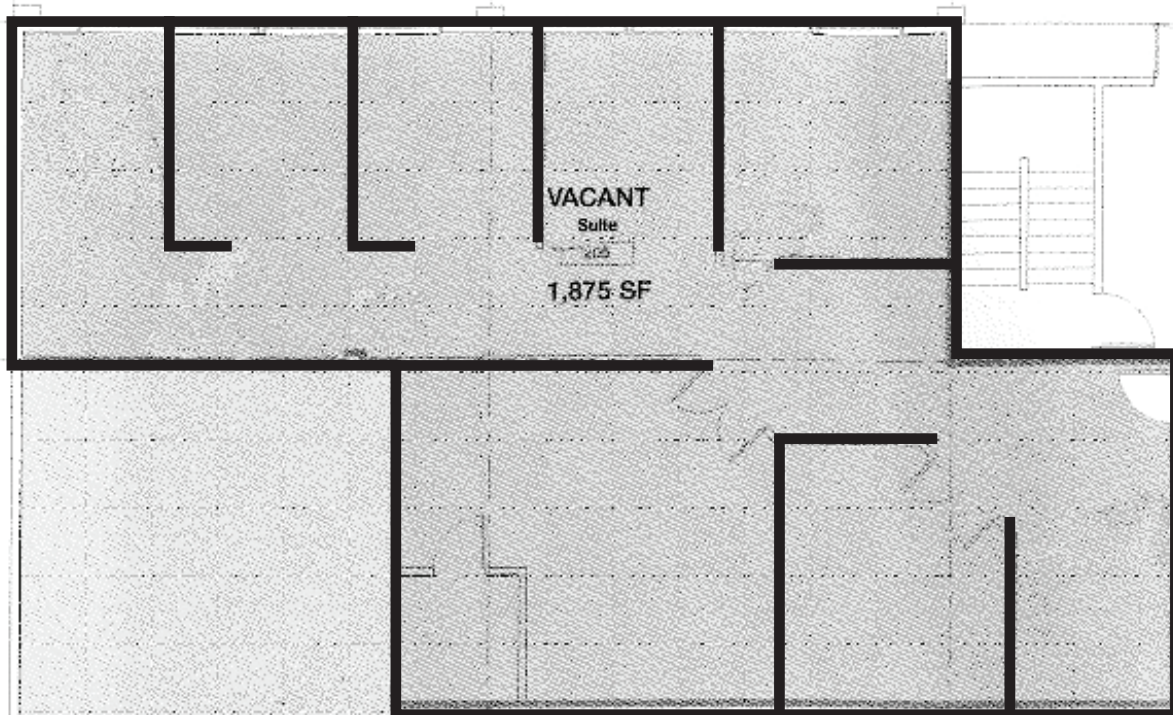
TYPE	SIZE	LEASE RATE	LEASE TYPE
Professional Office	1,875 SF	\$22.50/SF/YR	Gross



**ROGER LORENZE** | 206.406.1547  
rlorenze@ewingandclark.com

# FLOOR PLAN & PICTURES

3600 15TH AVENUE WEST | SEATTLE, 98119



← ENTRY

