

FOR LEASE

Owned and Operated by



South 200th St Industrial Building

2369 South 200th St, SeaTac, WA 98198



±4,650 SF



**LEASING INFO
& CONTACT**

Kent Channing

(425) 586-5628 / kchanning@nai-pp.com

Arie Salomon

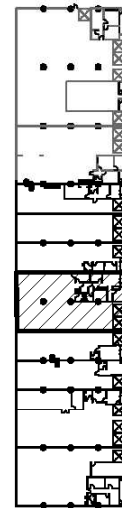
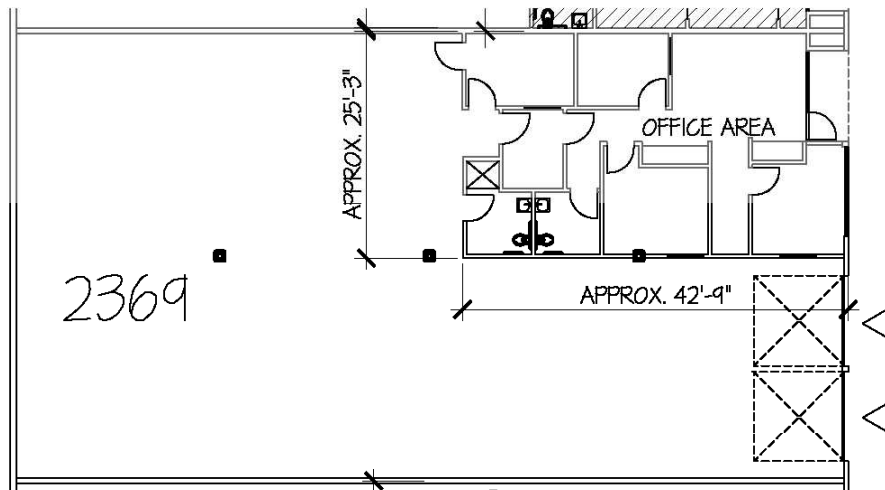
(425) 586-5636 / asalomon@nai-pp.com



This is not an offer or acceptance of an offer to lease space. A lease will only be offered or made in a written agreement signed by landlord. No representation or warranty of any kind is made by landlord unless set forth in a written definitive lease executed by the landlord.

OVERVIEW

4,650 SF
 1,079 SF Office
 2 grade level doors
 16' Clear Height
 Excellent access to I-5 & SR-509
 Lease Rate: \$1.05 shell, \$1.25 office add on
 NNN's: \$0.39
 Available now



Key Plan
 UPPER LEVEL

- ▶ DOCK HIGH DOOR
- ▷ GRADE LEVEL DOOR

2369 South 200th Street, Seatac, Washington
 SCALE : 1" = 20'-0" TOTAL AREA: 4,650 S.F. OFFICE AREA: 1,079 S.F.