

FOR LEASE

2300 EASTLAKE BUILDING

2300 EASTLAKE AVENUE E, SEATTLE, WA

A 17,957 SF office building for lease in the heart of Eastlake with easy access to I-5

Full building available at 17,957 SF, divisible between 2 floors

Perimeter privates with open space, conference rooms, kitchen, workroom, reception, showers, and bike storage

Abundant on-site, covered parking

Convenient access to I-5, University of Washington, South Lake Union, and CBD

Local ownership

17,957
TOTAL SF AVAILABLE

7,596
FLOOR 1 SF

10,361
FLOOR 2 SF

JEFF HUNTINGTON
206.296.9619
jeff.huntington@kidder.com

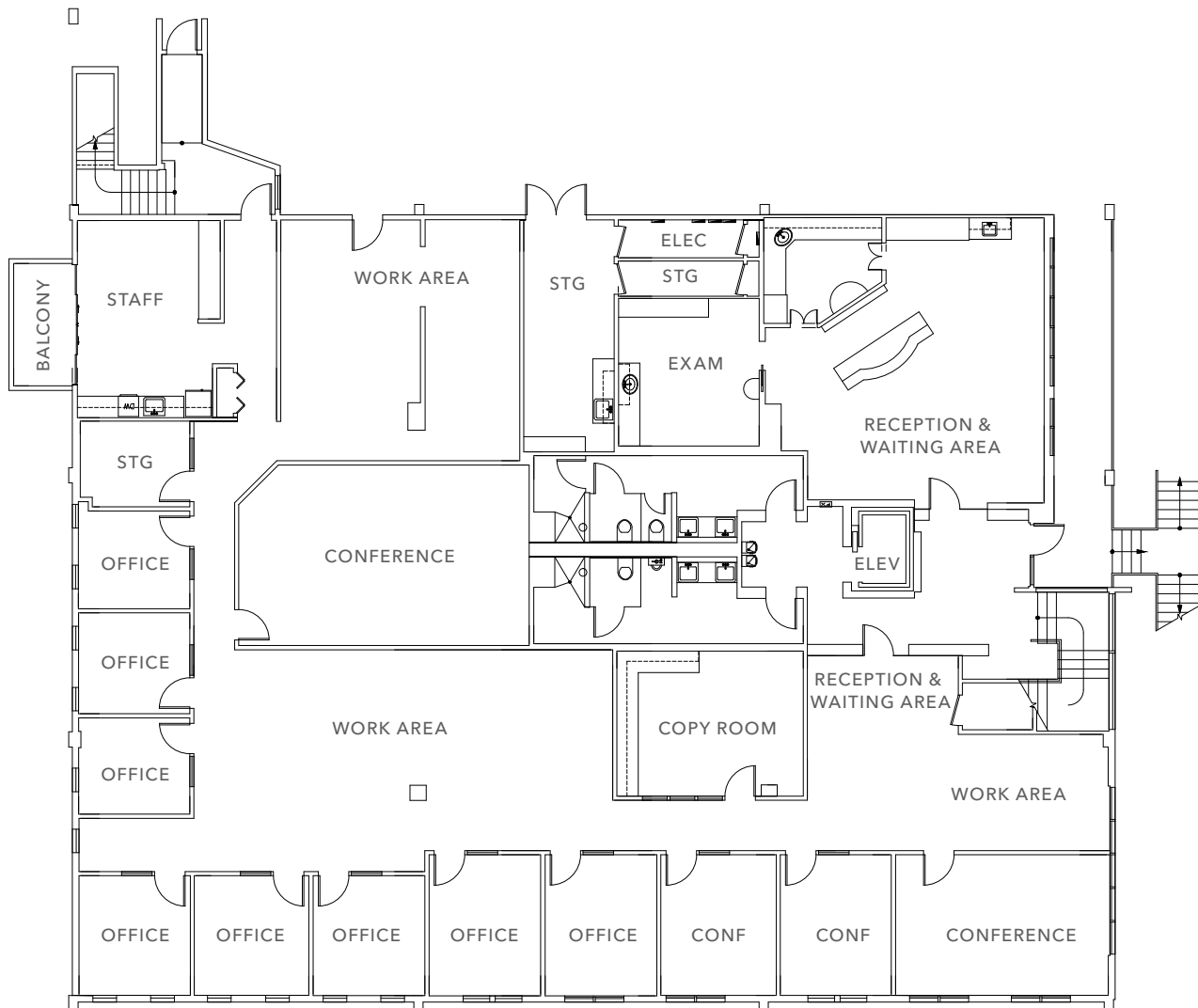
TIM FOSTER
206.296.9618
tim.foster@kidder.com

KIDDER.COM

This information supplied herein is from sources we deem reliable. It is provided without any representation, warranty, or guarantee, expressed or implied as to its accuracy. Prospective Buyer or Tenant should conduct an independent investigation and verification of all matters deemed to be material, including, but not limited to, statements of income and expenses. Consult your attorney, accountant, or other professional advisor.

km Kidder Mathews

FIRST FLOOR



7,596

SF AVAILABLE

NOW

AVAILABLE

JEFF HUNTINGTON

206.296.9619 | jeff.huntington@kidder.com

TIM FOSTER

206.296.9618 | tim.foster@kidder.com

KIDDER.COM

This information supplied herein is from sources we deem reliable. It is provided without any representation, warranty, or guarantee, expressed or implied as to its accuracy. Prospective Buyer or Tenant should conduct an independent investigation and verification of all matters deemed to be material, including, but not limited to, statements of income and expenses. Consult your attorney, accountant, or other professional advisor.

SECOND FLOOR



10,361

SF AVAILABLE

NOW

AVAILABLE

JEFF HUNTINGTON

206.296.9619 | jeff.huntington@kidder.com

TIM FOSTER

206.296.9618 | tim.foster@kidder.com

KIDDER.COM

This information supplied herein is from sources we deem reliable. It is provided without any representation, warranty, or guarantee, expressed or implied as to its accuracy. Prospective Buyer or Tenant should conduct an independent investigation and verification of all matters deemed to be material, including, but not limited to, statements of income and expenses. Consult your attorney, accountant, or other professional advisor.