

# SPRINGBROOK DISTRIBUTION CENTER FOR LEASE

**ADDRESS**  
7911 S 188th St  
Kent, WA

**TOTAL SF**  
183,542 SF

**OFFICE SF**  
2,403 SF

**SHOP**  
4,127 SF

**NEWMARK**

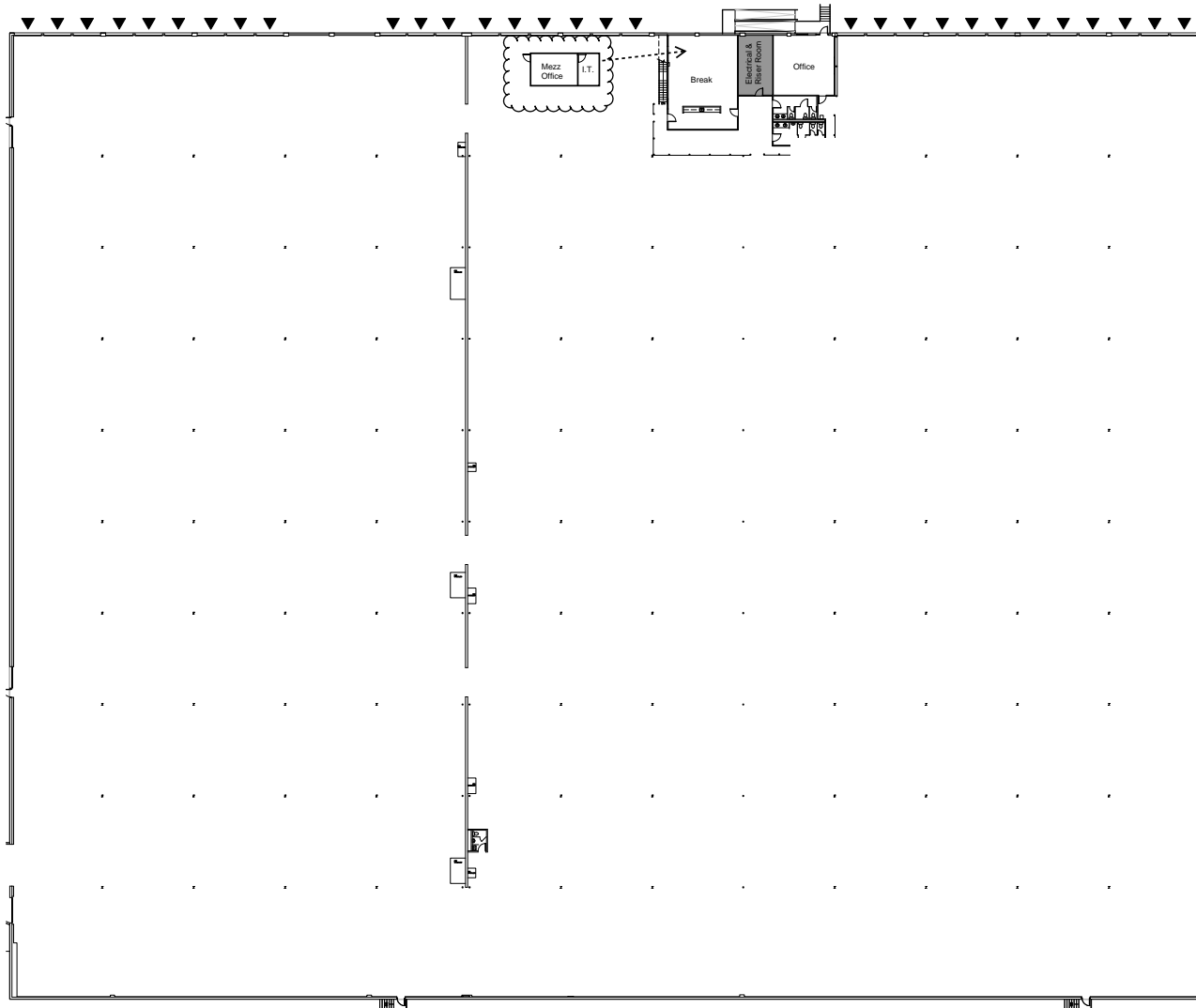
**THAD MALLORY, SIOR**  
thad.mallory@nrmk.com  
425-362-1410

**TAYLOR HOFF, SIOR**  
taylor.hoff@nrmk.com  
425-362-1388

**BLAKE BENTZ**  
blake.bentz@nrmk.com  
425-362-1391

# SPRINGBROOK DISTRIBUTION CENTER

## FLOOR PLAN



▲ DOCK HIGH

## BUILDING DETAILS

### ADDRESS

7911 S 188th St, Kent, WA (Suite 200)

### TOTAL SF

183,542 SF

### OFFICE SF

2,403 SF

### SHOP

4,127 SF

### CLEAR HEIGHT

24'

### LOADING

30 Dock High Doors

### PARKING/YARD AREA

Fenced Truck Court

23 Stripped Trailer Stalls

## PROPERTY HIGHLIGHTS

- New LED Lighting Throughout
- Kent Valley Location
- Immediate Access to SR 167, I-5 and I-405
- Make Ready Work Complete in the Office and Warehouse

# SPRINGBROOK DISTRIBUTION CENTER

 [CLICK HERE FOR VIRTUAL TOUR](#)



# SPRINGBROOK DISTRIBUTION CENTER

## DRIVE TIMES

Seattle-Tacoma International Airport	6 Miles
Port of Seattle	13.5 Miles

7911 S 188TH ST  
KENT, WA



# SPRINGBROOK DISTRIBUTION CENTER

**NEWMARK**

**Thad Mallory, SIOR**  
425.362.1410  
thad.mallory@nmrk.com

**Taylor Hoff, SIOR**  
425.362.1388  
taylor.hoff@nmrk.com

**Blake Bentz**  
425.362.1391  
blake.bentz@nmrk.com

The distributor of this communication is performing acts for which a real estate license is required. The information contained herein has been obtained from sources deemed reliable but has not been verified and no guarantee, warranty or representation, either express or implied, is made with respect to such information. Terms of sale or lease and availability are subject to change or withdrawal without notice.