

# DPI EAST PARK

4520 B St NW, Suite D, Auburn, WA

Available Now

Manufacturing/Distribution Space

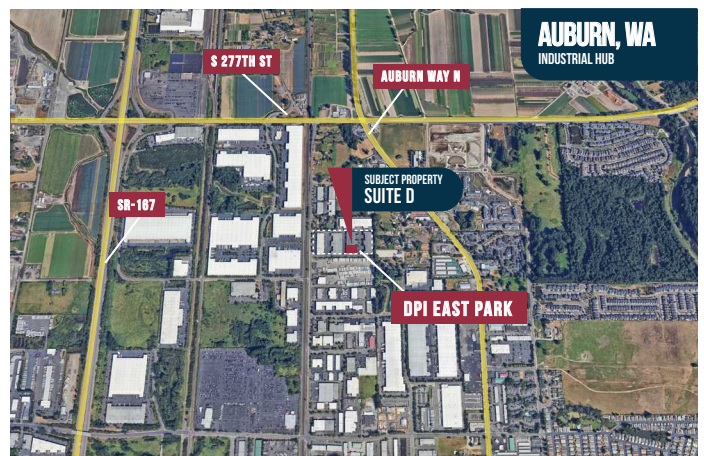


## Property Specifications

- 15,799 SF Total
- 1,247 SF Office
- 4 dock-high doors
- 2 oversize grade-level doors (12'x16')
- 24' clear height
- 300 amps 277/480v 3-phase power
- Call for rates

## Property Features

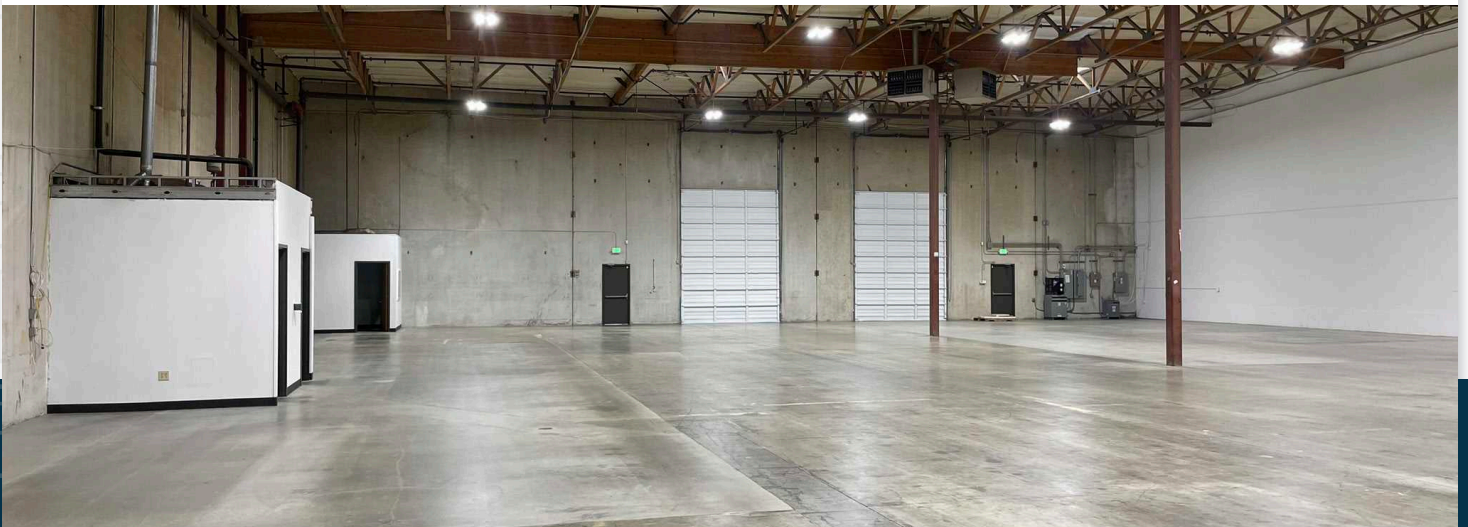
- Excellent location with access to B St, & SR-167/I-5 via 277th in Auburn
- New finishes and app-controlled LED lighting





## DPI EAST PARK

**DPI** Davis Property  
& Investment



Contact Kidder Mathews for more info:

Travis Stanaway

206-248-6526

travis.stanaway@kidder.com

Matt Murray

206-248-6541

matt.murray@kidder.com

Dane Dahline

206-248-6519

dane.dahline@kidder.com

Lisa Rowe

206-777-5122

lisar@dpillc.com

The information provided in this document should be independently verified on any material matter represented herein.

Owned & Operated by:

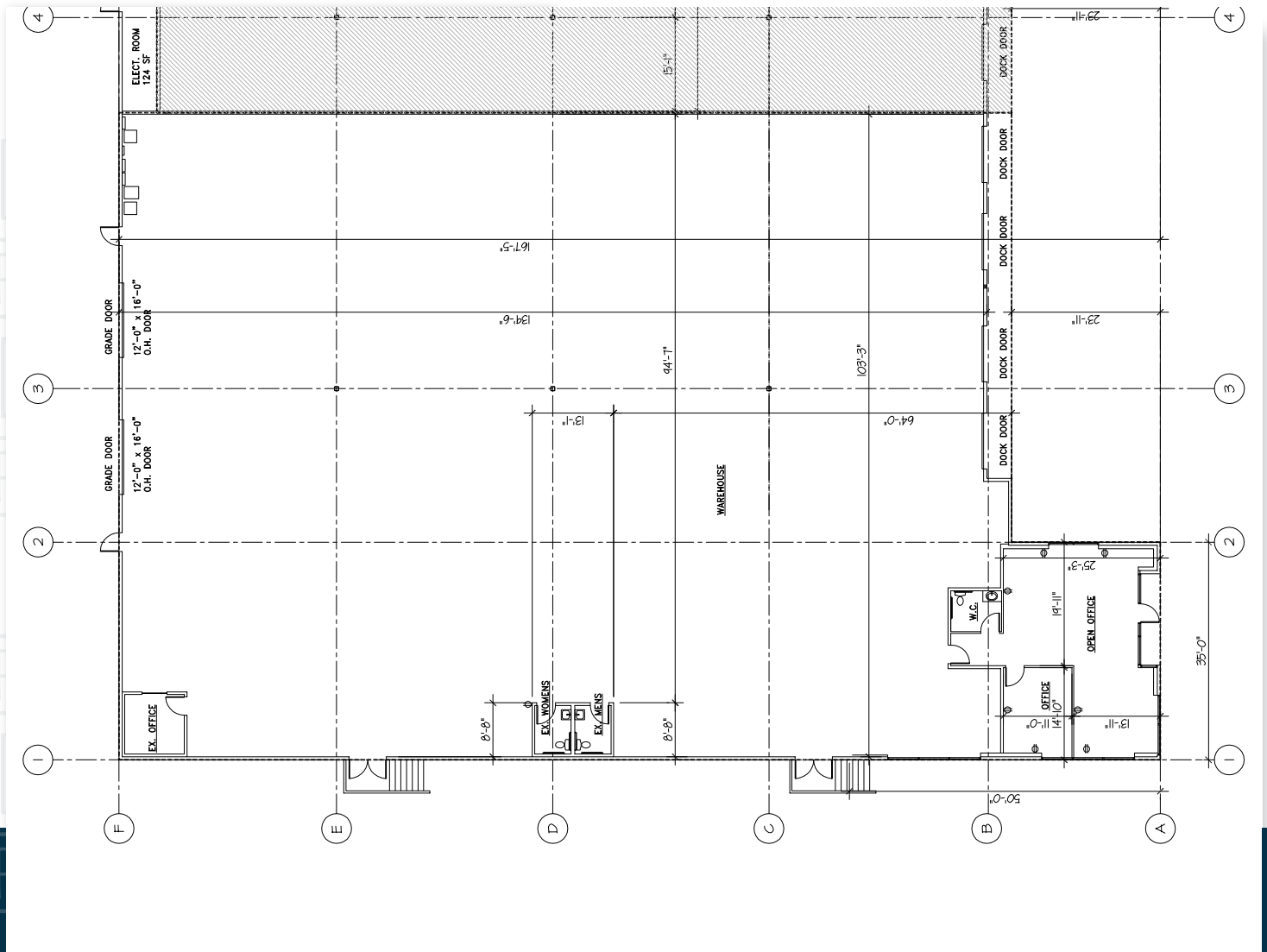
**DPI** Davis Property  
& Investment

Leasing by:

**km** Kidder  
Mathews

dpillc.com

# DPI EAST PARK



## Contact Kidder Mathews for more info:

<p>Travis Stanaway</p> <p>206-248-6526</p> <p>travis.stanaway@kidder.com</p>	<p>Matt Murray</p> <p>206-248-6541</p> <p>matt.murray@kidder.com</p>	<p>Dane Dahline</p> <p>206-248-6519</p> <p>dane.dahline@kidder.com</p>	<p>Lisa Rowe</p> <p>206-777-5122</p> <p>lisar@dpillc.com</p>
--	--	--	--

The information provided in this document should be independently verified on any material matter represented herein.