

6546 20TH STREET E, FIFE, WA

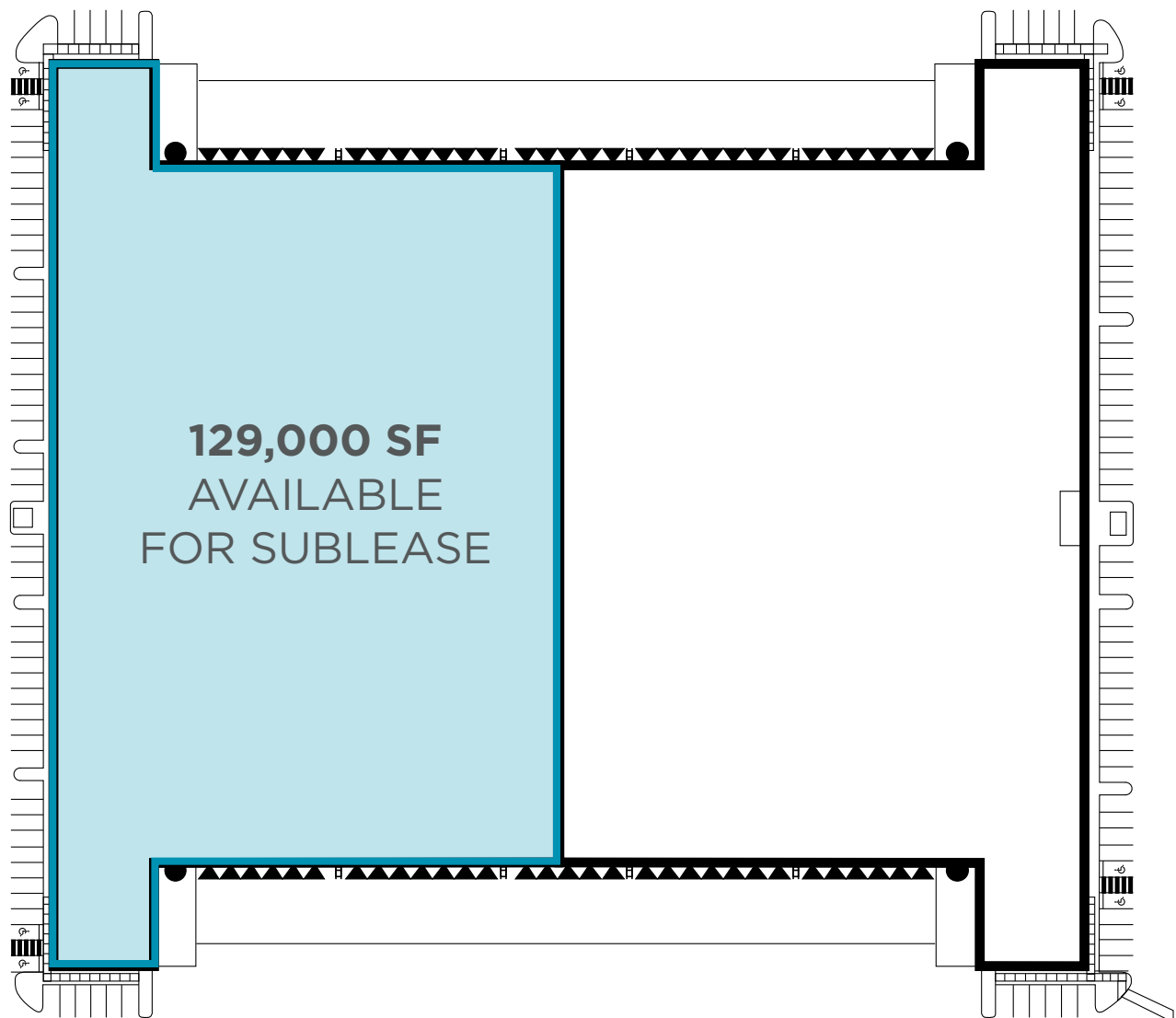


50,000 SF - 129,000 SF | SUBLEASE

Connor Cree
Executive Director
+1 206 521 0289
connor.cree@cushwake.com

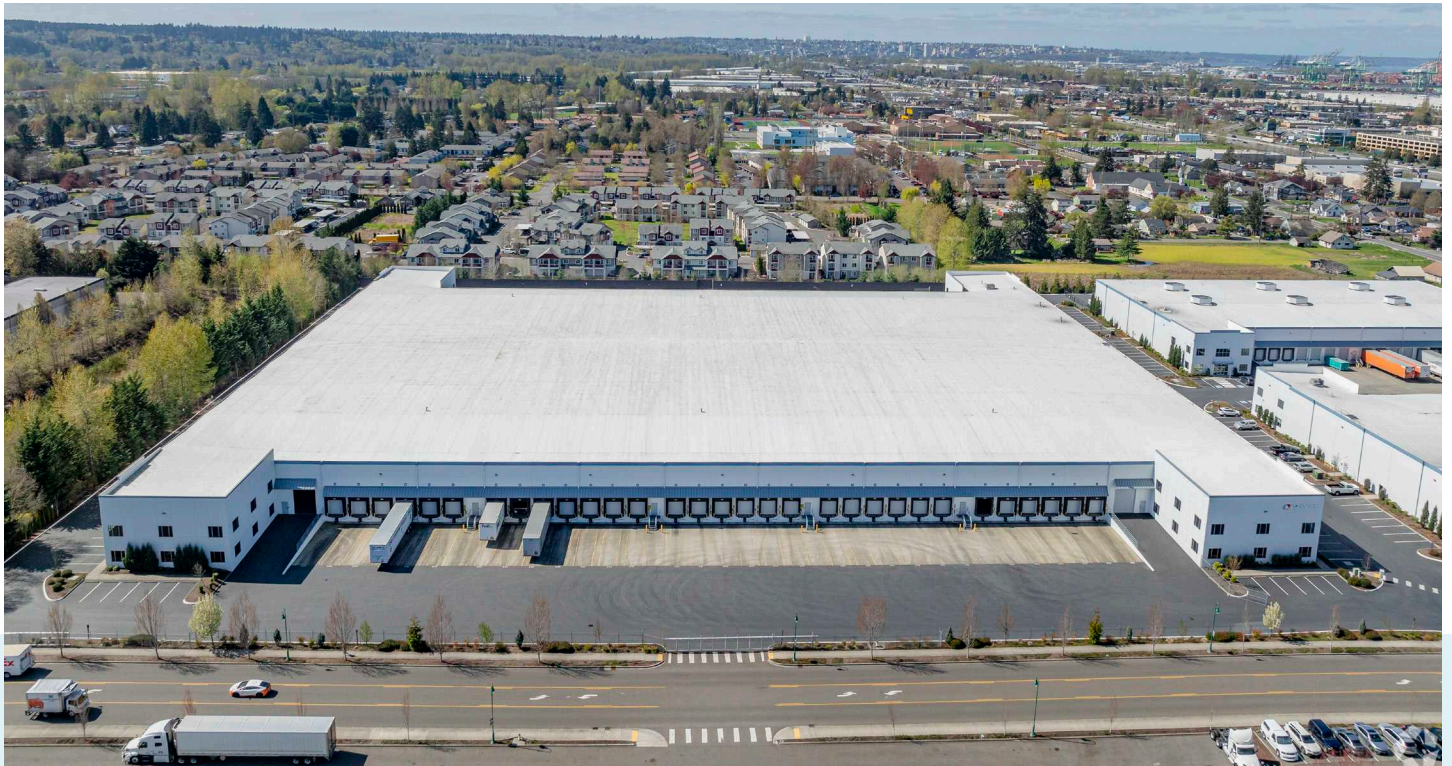
HIGHLIGHTS & PLAN

- 50,000 SF - 129,000 SF (minimal office)
- 30 DH & 2 GL
- Available Now
- ESFR Sprinkler
- 32' Clear Height
- Short & long term deals considered
- Flexible demise options
- \$0.77/SF, Blended + NNN



66th Ave E

PROPERTY LOCATION



©2025 Cushman & Wakefield. All rights reserved. The information contained in this communication is strictly confidential. This information has been obtained from sources believed to be reliable but has not been verified. NO WARRANTY OR REPRESENTATION, EXPRESS OR IMPLIED, IS MADE AS TO THE CONDITION OF THE PROPERTY (OR PROPERTIES) REFERENCED HEREIN OR AS TO THE ACCURACY OR COMPLETENESS OF THE INFORMATION CONTAINED HEREIN, AND SAME IS SUBMITTED SUBJECT TO ERRORS, OMISSIONS, CHANGE OF PRICE, RENTAL OR OTHER CONDITIONS, WITHDRAWAL WITHOUT NOTICE, AND TO ANY SPECIAL LISTING CONDITIONS IMPOSED BY THE PROPERTY OWNER(S). ANY PROJECTIONS, OPINIONS OR ESTIMATES ARE SUBJECT TO UNCERTAINTY AND DO NOT SIGNIFY CURRENT OR FUTURE PROPERTY PERFORMANCE.