

ANDERSON COMMERCE CENTER

FOR LEASE

8602-8718 S 222ND ST | KENT, WA

HIGH QUALITY INDUSTRIAL SPACE UNDER NEW OWNERSHIP

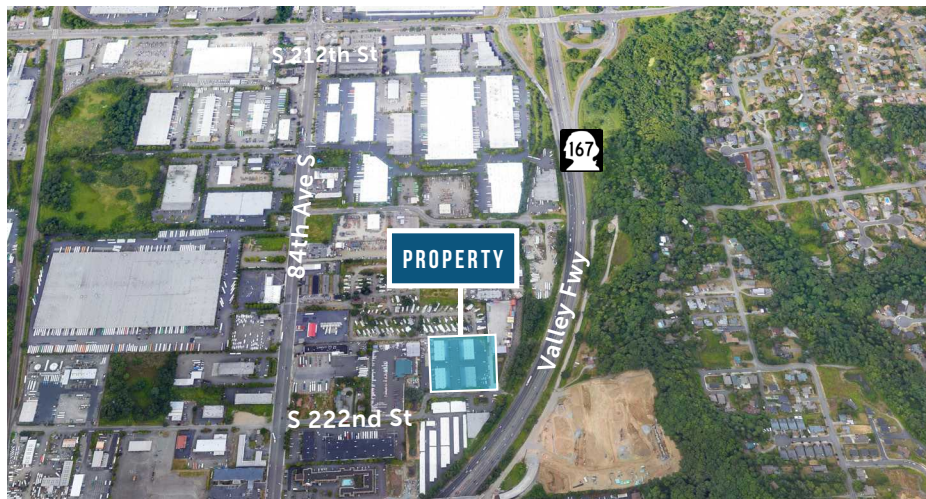


LEASE INFORMATION

Building	Unit	Total Size	Office Size	Demisable	Loading	Available
D	8714-D	2,019 SF	458 SF	No	1 GL Doors	Now

PROPERTY HIGHLIGHTS

- 16' clear height
- Oversized loading areas
- Direct access to Hwy-167
- New LED lights in office & warehouse
- New grade level doors
- Fresh paint in office & warehouse
- NNN Rate: \$0.40/SF
- Lease Rate: \$1.35/SF Blended



GRIFFIN DAY
206.261.4012
gday@neilwalter.com

SPENCER MEAD
206.787.1476
smead@neilwalter.com

professionally
managed/owned by:



All information references in this document are approximate. The information contained herein is contained from sources deemed reliable. It is provided without representation, warranty, or guarantee, expressed or implied as to accuracy. Prospective buyer or tenant should conduct its own independent investigation relating to the property, government codes and regulations, allowed uses, and all other matters, regardless of whether they are referred to or contained in this document.

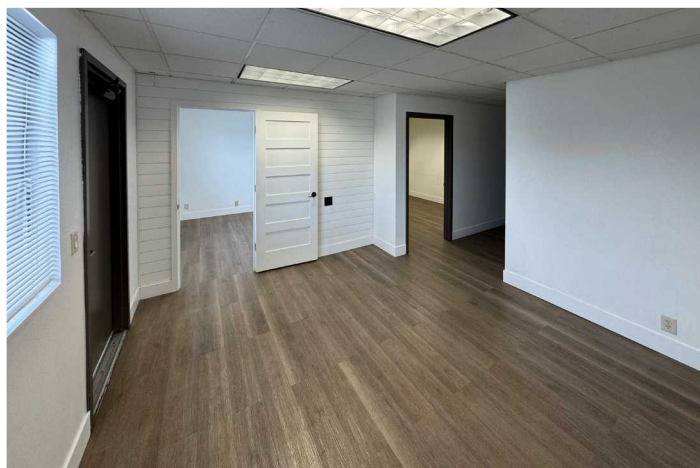
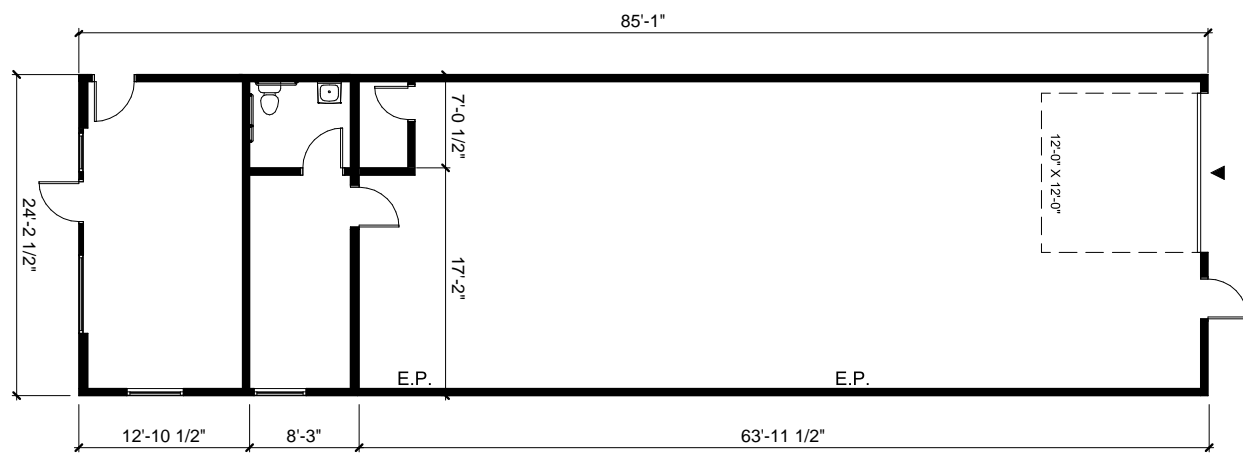
ANDERSON COMMERCE CENTER

8602-8718 S 222ND ST | KENT, WA



Building D - SUITE 8714-D

2,019 SF



GRIFFIN DAY
206.261.4012
gday@neilwalter.com

SPENCER MEAD
206.787.1476
smead@neilwalter.com

550 S Michigan St
Seattle, WA 98108
206.787.1800
www.neilwalter.com

All information references in this document are approximate. The information contained herein is contained from sources deemed reliable. It is provided without representation, warranty, or guarantee, expressed or implied as to accuracy. Prospective buyer or tenant should conduct its own independent investigation relating to the property, government codes and regulations, allowed uses, and all other matters, regardless of whether they are referred to or contained in this document.