



Pacific Avenue Professional Offices

The Pacific Avenue office building is located at 8833 Pacific Ave. For lease are two office suites entered from an atrium-like common area. Suite D is 1,288sf and is a first floor medical office just off the inner courtyard. It features a waiting room and receptionist's office, a private office, two exam rooms, a lab or third exam room, a semi-private office, a large open room, and two rest rooms.

This large office building offers a standout presence on Pacific Ave, excellent pole signage, ample parking in the lighted lot behind the building, and 24/7 keyed access for tenants.

Property Overview

- Ample lighted parking
- Suite D: 1,288sf (Main Floor)
- Lease Rate: \$24.00 Modified
- New roof, asphalt & sealcoat
- Suite I: 626sf (2nd Floor)
- Tenants pay electricity
- New siding and windows
- Zoned C1

DISCLAIMER: The above information has been secured from sources believed to be reliable, however, no representations are made to its accuracy. Prospective tenants or buyers should consult their professional advisors and conduct their own independent investigation. Properties are subject to change in price and/or availability without notice.





EXTERIOR PHOTOS



INTERIOR PHOTOS - SUITE 1



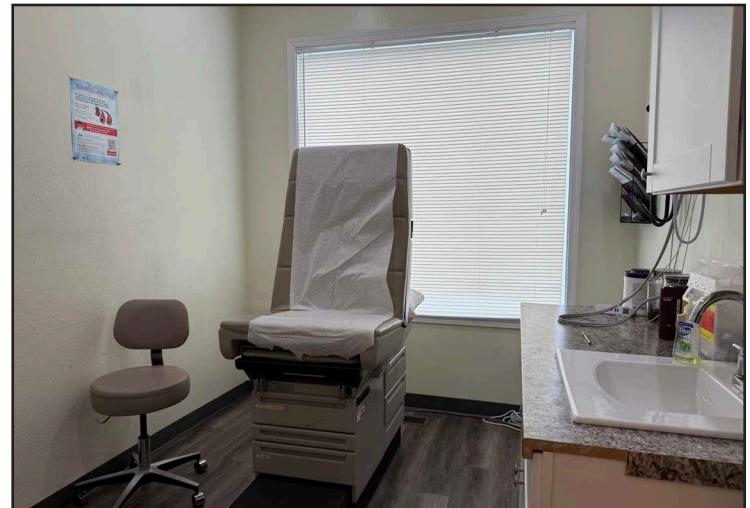
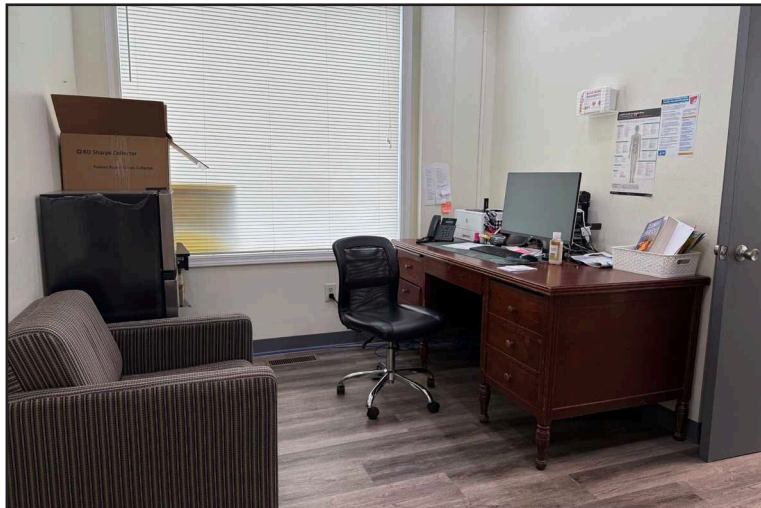
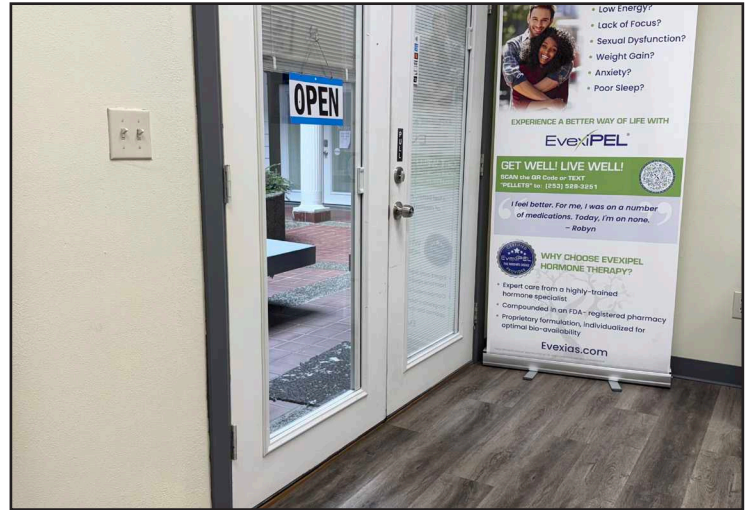
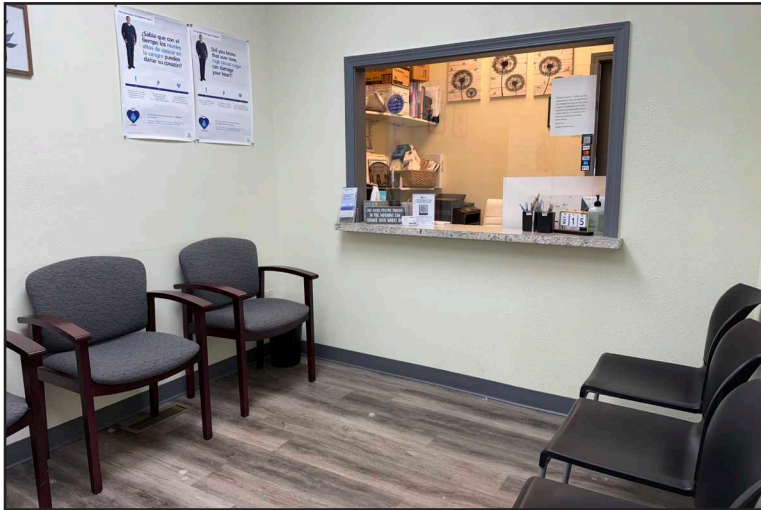
11120 Gravelly Lake Dr SW Ste 2
Lakewood, Washington 98499
johnson-commercial.com

Tim Johnson
timothy@johnson-commercial.com
(253) 209-9999

Margot Johnson
margot@johnson-commercial.com
(253) 209-9998



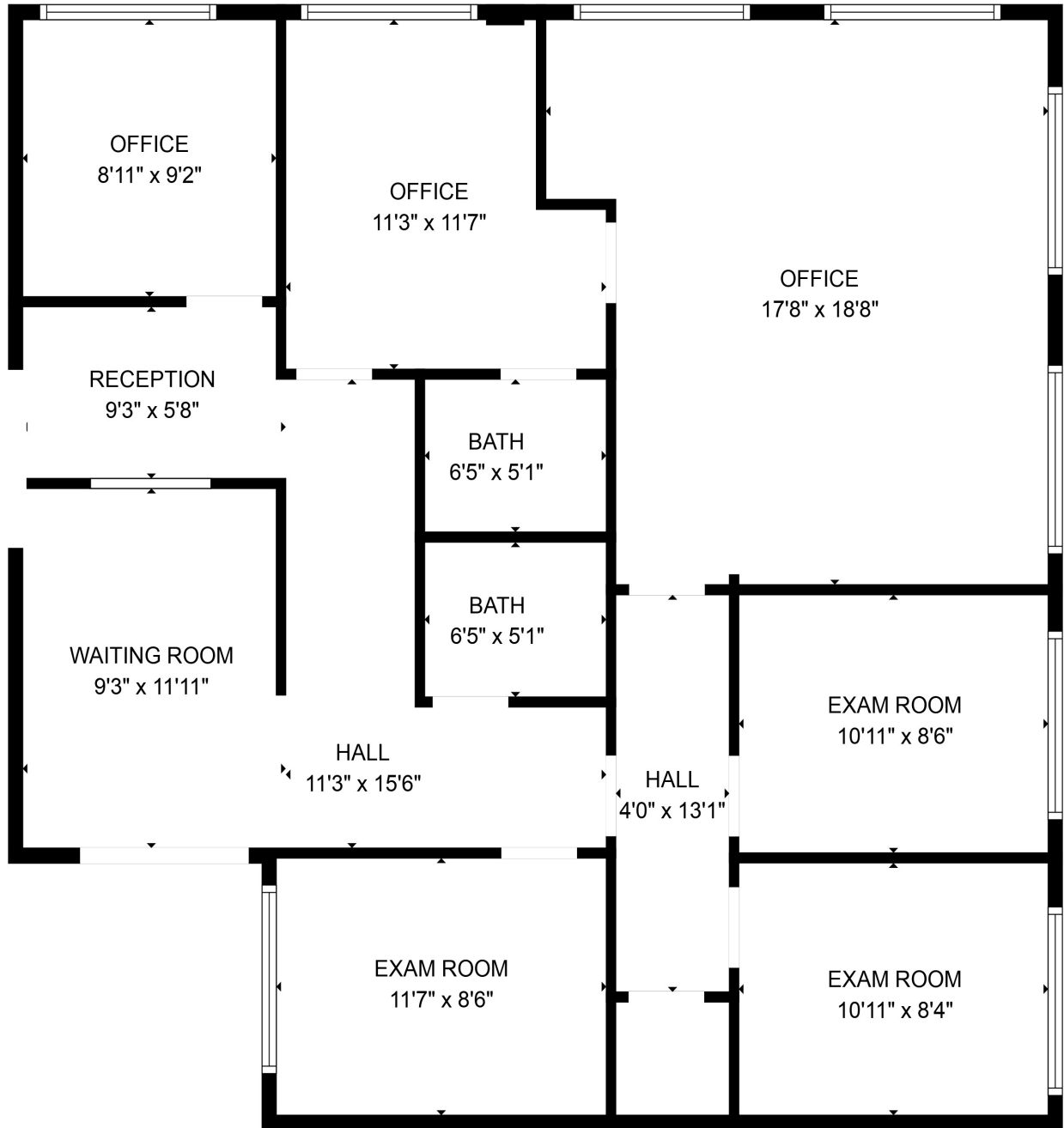
INTERIOR PHOTOS - SUITE D



11120 Gravelly Lake Dr SW Ste 2
Lakewood, Washington 98499
johnson-commercial.com

Tim Johnson
timothy@johnson-commercial.com
(253) 209-9999

Margot Johnson
margot@johnson-commercial.com
(253) 209-9998



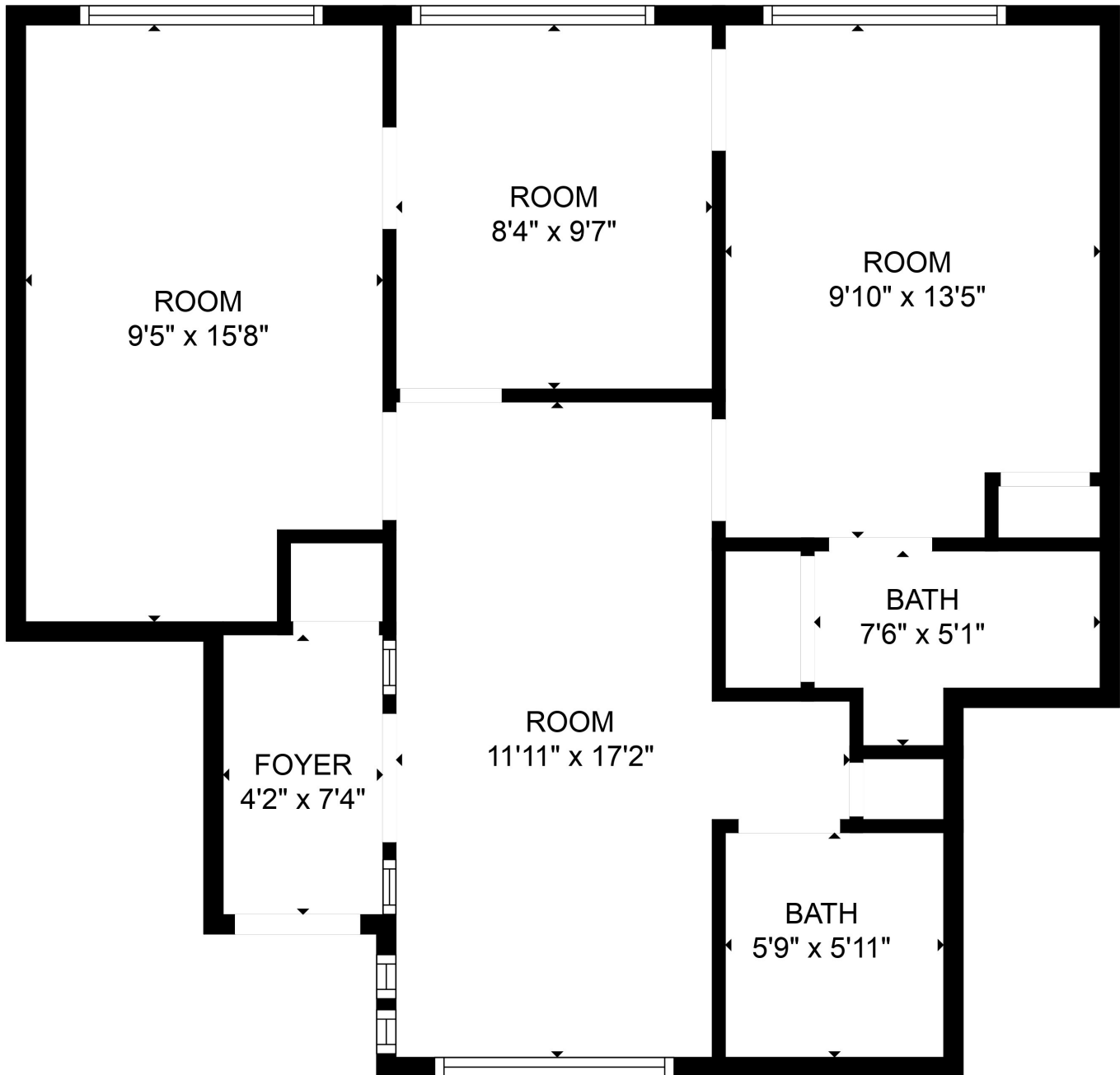
FLOOR PLAN CREATED BY CUBICASA APP. MEASUREMENTS DEEMED HIGHLY RELIABLE BUT NOT GUARANTEED.



11120 Gravelly Lake Dr SW Ste 2
Lakewood, Washington 98499
johnson-commercial.com

Tim Johnson
timothy@johnson-commercial.com
(253) 209-9999

Margot Johnson
margot@johnson-commercial.com
(253) 209-9998



FLOOR PLAN CREATED BY CUBICASA APP. MEASUREMENTS DEEMED HIGHLY RELIABLE BUT NOT GUARANTEED.



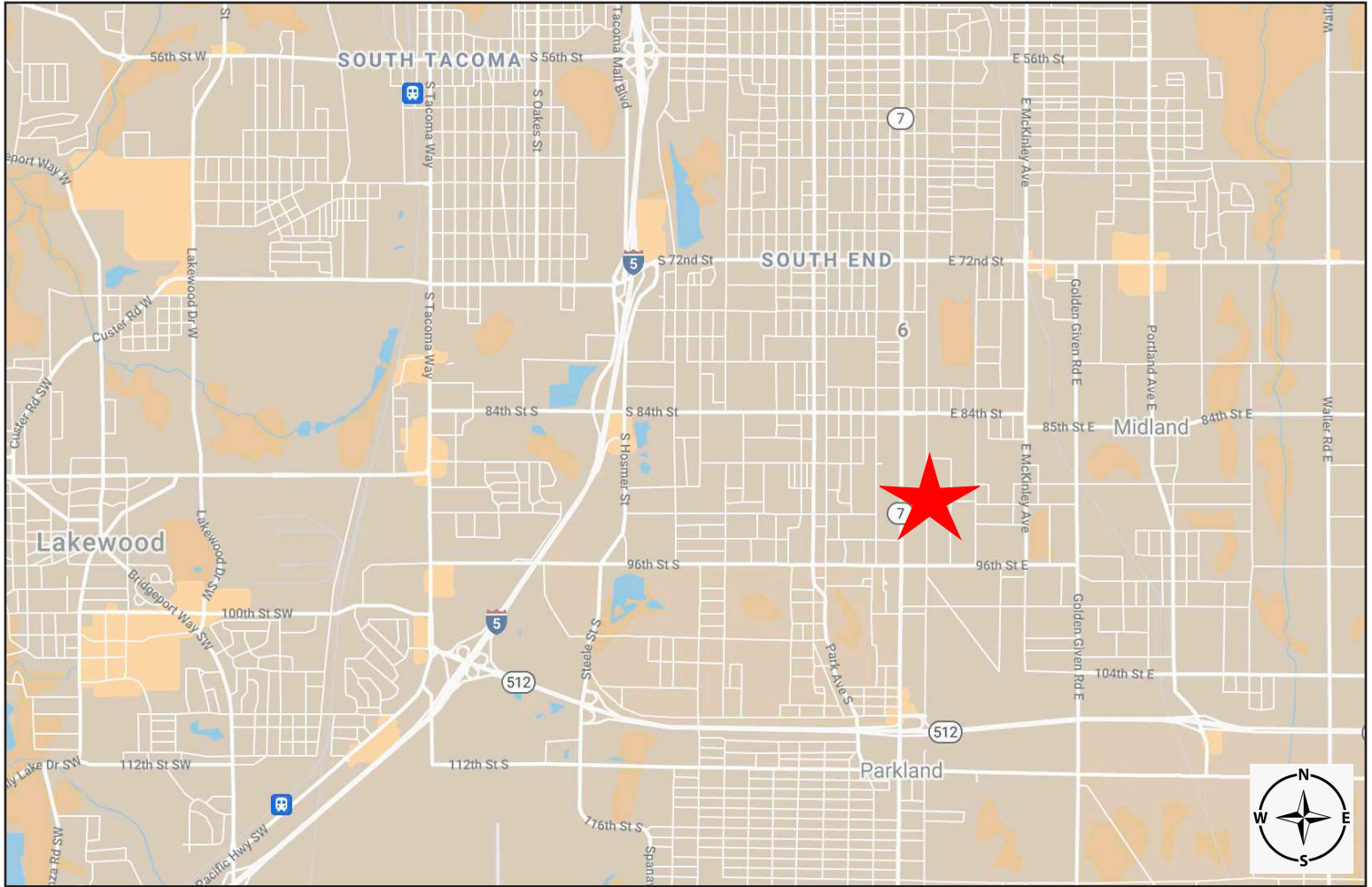
11120 Gravelly Lake Dr SW Ste 2
Lakewood, Washington 98499
johnson-commercial.com

Tim Johnson
timothy@johnson-commercial.com
(253) 209-9999

Margot Johnson
margot@johnson-commercial.com
(253) 209-9998



AREA MAP



11120 Gravelly Lake Dr SW Ste 2
Lakewood, Washington 98499
johnson-commercial.com

Tim Johnson

timothy@johnson-commercial.com
(253) 209-9999

Margot Johnson

margot@johnson-commercial.com
(253) 209-9998