

PUYALLUP CENTER

14312 MERIDIAN E, PUYALLUP, WA 98373



OFFERING SUMMARY

Available SF:	5,962 SF
Lease Rate:	\$22.00 SF/yr (NNN)
Lot Size:	45,538 SF
Year Built:	2009
Building Size:	9,250 SF
Zoning:	UCOR
Market:	Puyallup

PROPERTY OVERVIEW

Featuring well-maintained landscaping and a professional environment, the location is ideal for businesses of all sizes. Easy access to major transportation routes and ample parking. DO NOT bother the current Tenant. Call Broker with any Questions.

PROPERTY HIGHLIGHTS

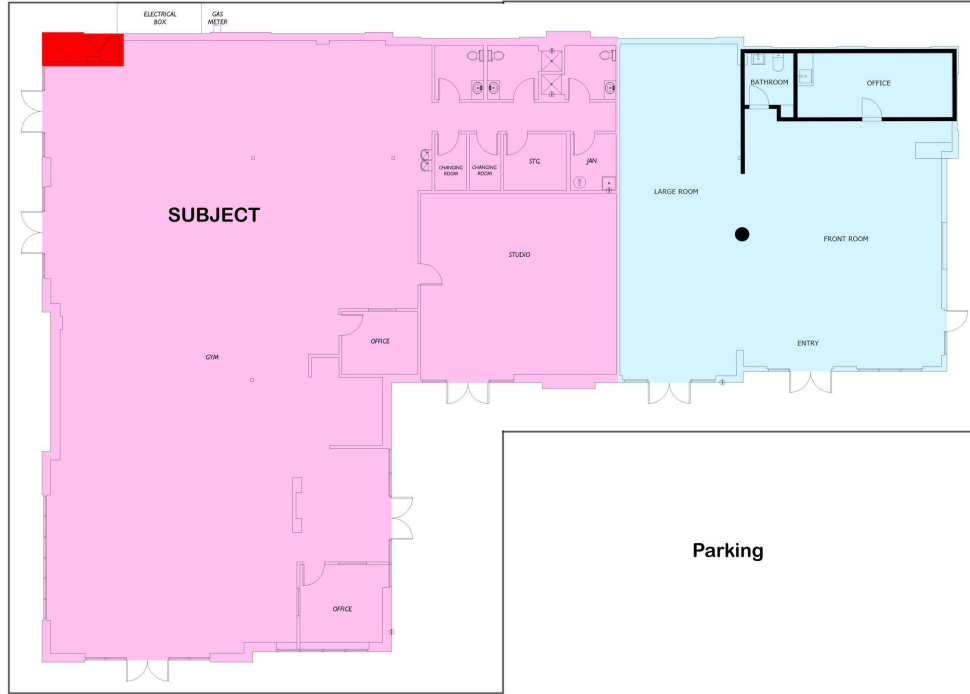
- Modern amenities and fixtures
- Walgreen's Anchored Center
- Ample on-site parking for tenants and clients
- Professionally maintained landscaping
- Convenient access to major transportation routes
- Close proximity to retail and dining options
- 2025 Estimated Operating Expenses = \$8.64 psf/yr
- Available with 90 days prior notice.



DAVID HALL, CCIM, CPM CANDIDATE
206.381.3883 x107
david@corecommercialproperties.com

PUYALLUP CENTER

14312 MERIDIAN E, PUYALLUP, WA 98373



LEASE INFORMATION

Lease Type:	NNN	Lease Term:	Negotiable
Total Space:	5,962 SF	Lease Rate:	\$22.00 SF/yr

AVAILABLE SPACES

SUITE	TENANT	SIZE (SF)	LEASE TYPE	LEASE RATE	DESCRIPTION
14312 Meridian Ave E	Available	5,962 SF	NNN	\$22.00 SF/yr	Currently a fitness center, the space is comprised of 5,962 SF of mostly open space with private restrooms, some office and storage. 90 Days notice. Do not bother current Tenant.



DAVID HALL, CCIM, CPM CANDIDATE
 206.381.3883 x107
 david@corecommercialproperties.com

PUYALLUP CENTER

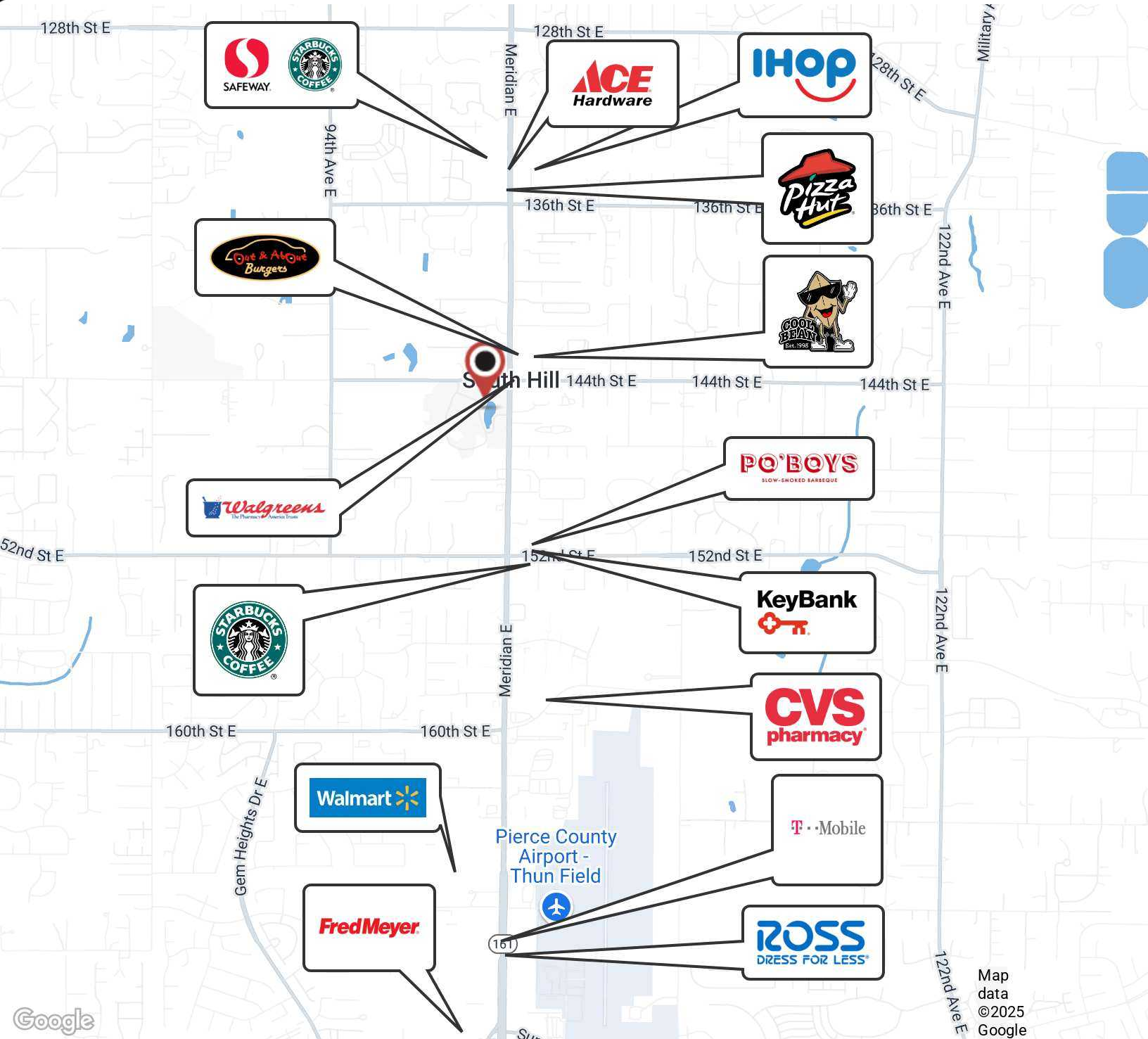
14312 MERIDIAN E, PUYALLUP, WA 98373



DAVID HALL, CCIM, CPM CANDIDATE
206.381.3883 x107
david@corecommercialproperties.com

PUYALLUP CENTER

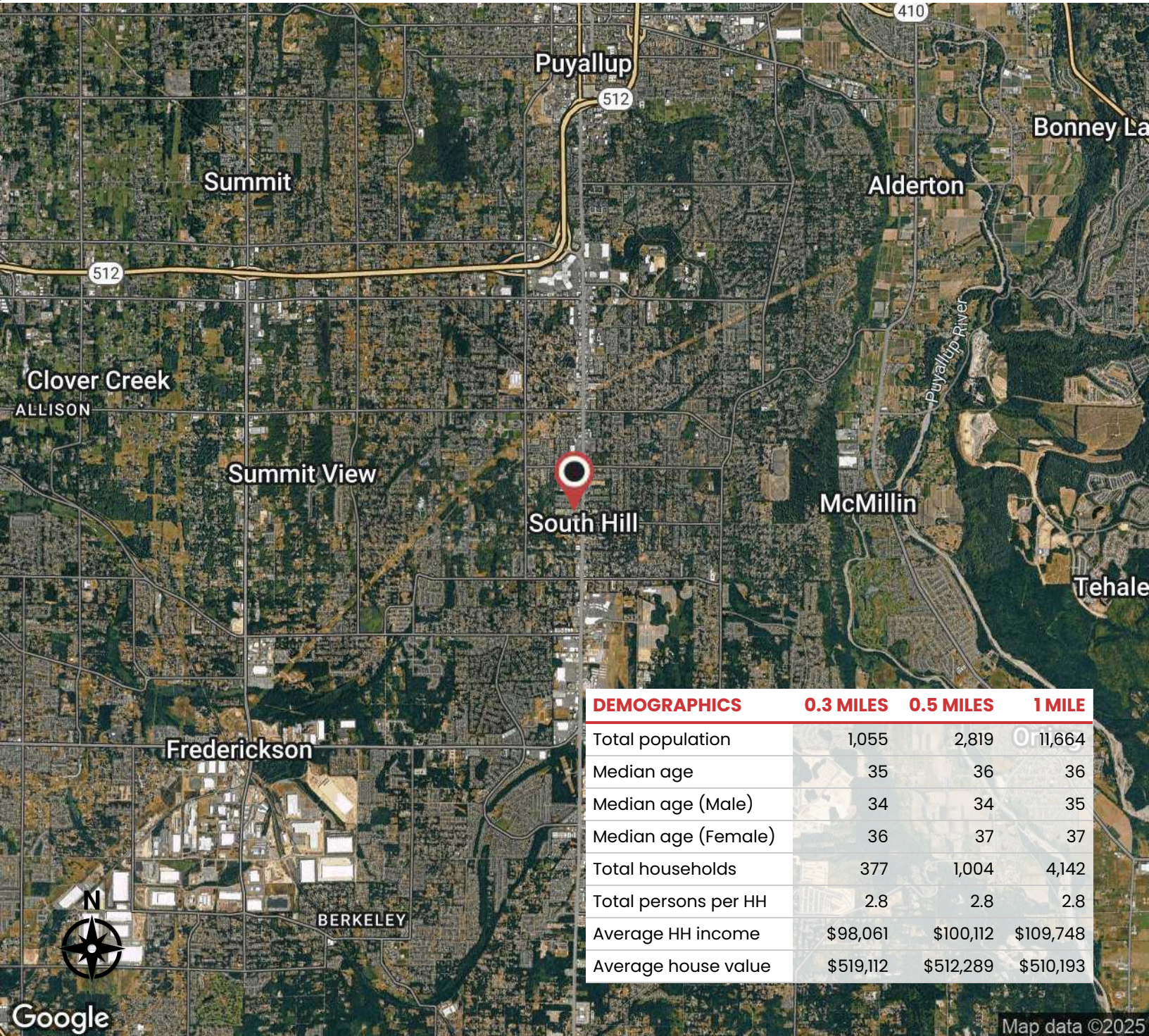
14312 MERIDIAN E, PUYALLUP, WA 98373



DAVID HALL, CCIM, CPM CANDIDATE
206.381.3883 x107
david@corecommercialproperties.com

PUYALLUP CENTER

14312 MERIDIAN E, PUYALLUP, WA 98373



DEMOGRAPHICS	0.3 MILES	0.5 MILES	1 MILE
Total population	1,055	2,819	11,664
Median age	35	36	36
Median age (Male)	34	34	35
Median age (Female)	36	37	37
Total households	377	1,004	4,142
Total persons per HH	2.8	2.8	2.8
Average HH income	\$98,061	\$100,112	\$109,748
Average house value	\$519,112	\$512,289	\$510,193

Map data ©2025



DAVID HALL, CCIM, CPM CANDIDATE
 206.381.3883 x107
 david@corecommercialproperties.com