

Retail Space Available

22210 SE 272nd St.
Maple Valley, WA 98038



Chris Hewitt
D. 206.436.2346 | C. 425.466.0201
chris.hewitt@cannoncommercial.com

cannon
commercial

Property Overview

22210 SE 272nd St.
Maple Valley, WA 98038

Space Details:

Building Size: 1,415 SF

Asking Rent: \$28.00/SF/YR + NNN

NNN: \$6.79/SF/YR (estimate only)

Availability: 4-6 weeks notice

Features and Highlights:

- 44,172 Daily Traffic Count
- Property is located near the bustling Four Corners of Maple Valley.
- Open floor plan providing for flexible options for any retail or personal service business. Bring your vision for this blank canvas!

Demographics	1 mile	3 miles	5 miles
2024 Population	13,694	50,769	83,468
2029 Population	13,424	49,992	81,437
Median HH Income	\$128,284	\$127,873	\$123,138

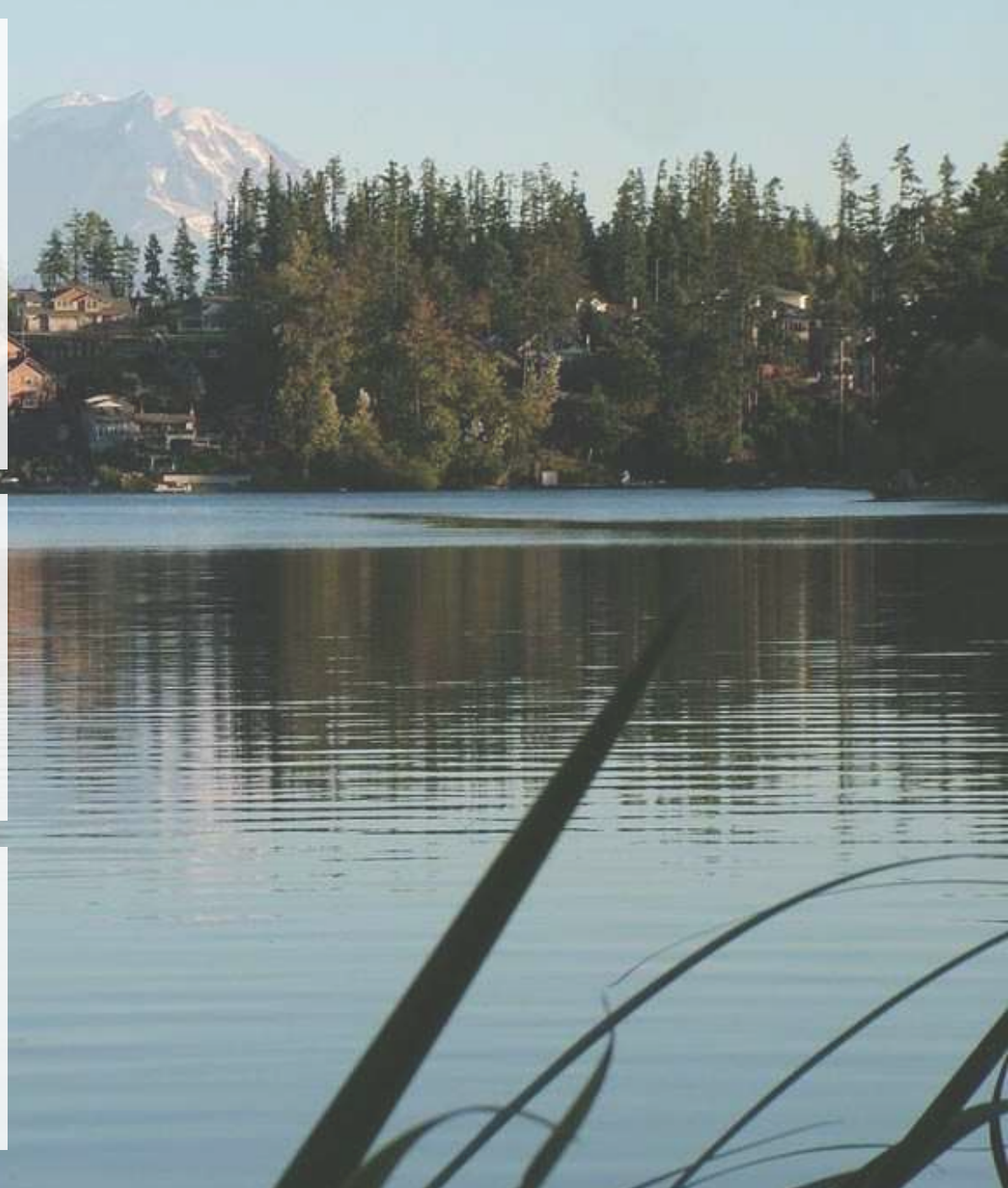
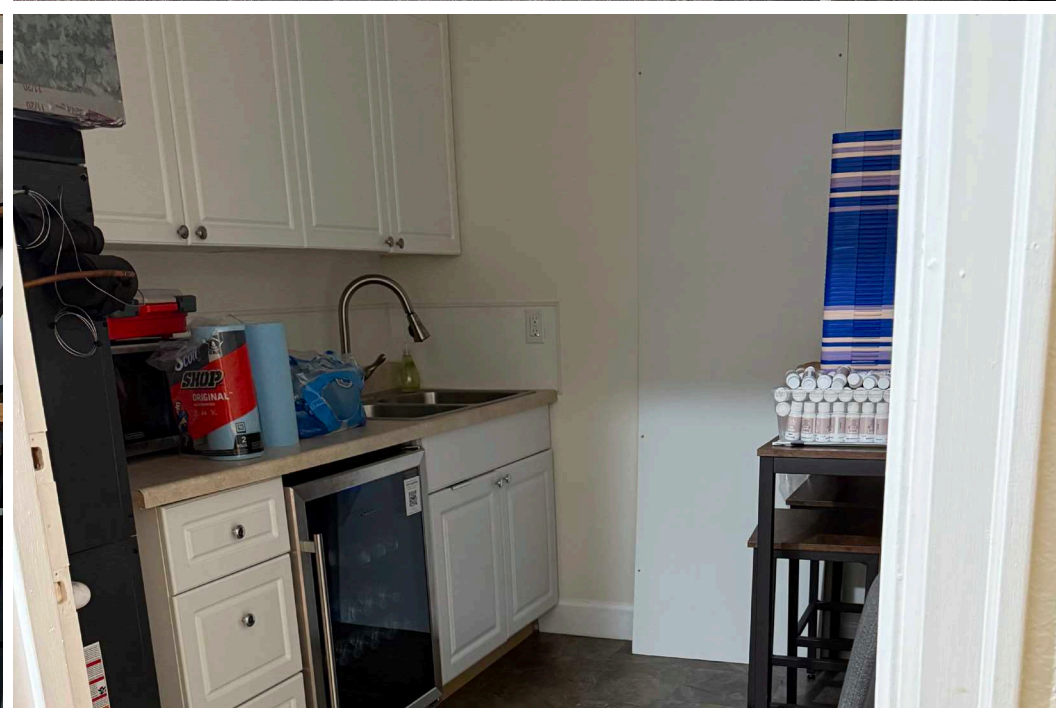
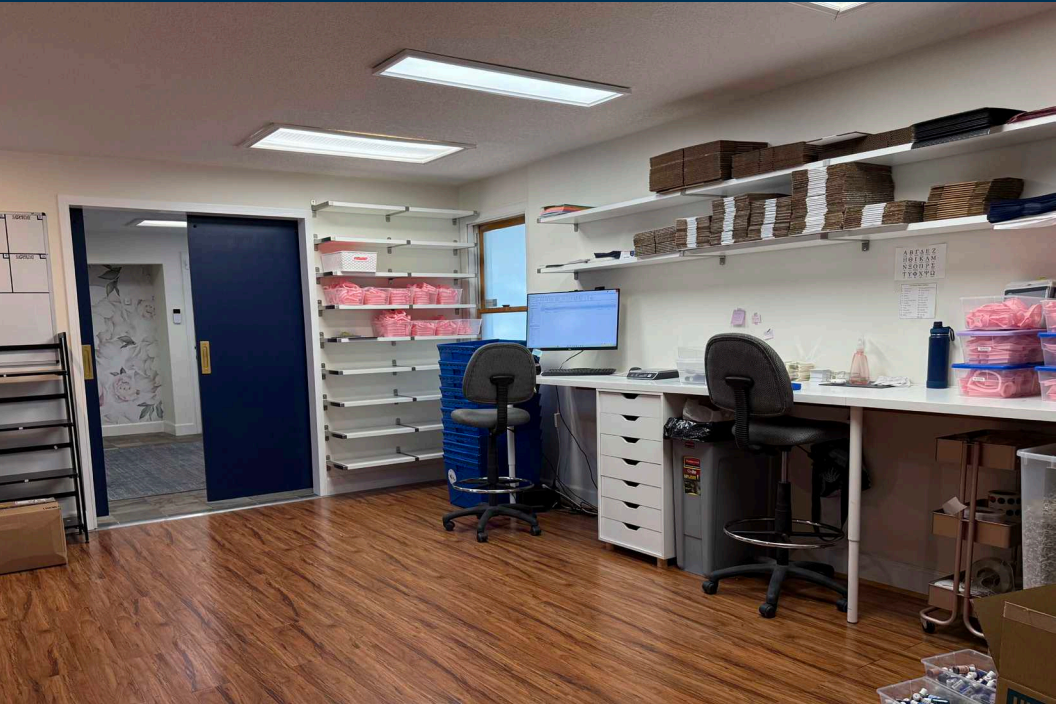


Photo Gallery

22210 SE 272nd St.
Maple Valley, WA 98038



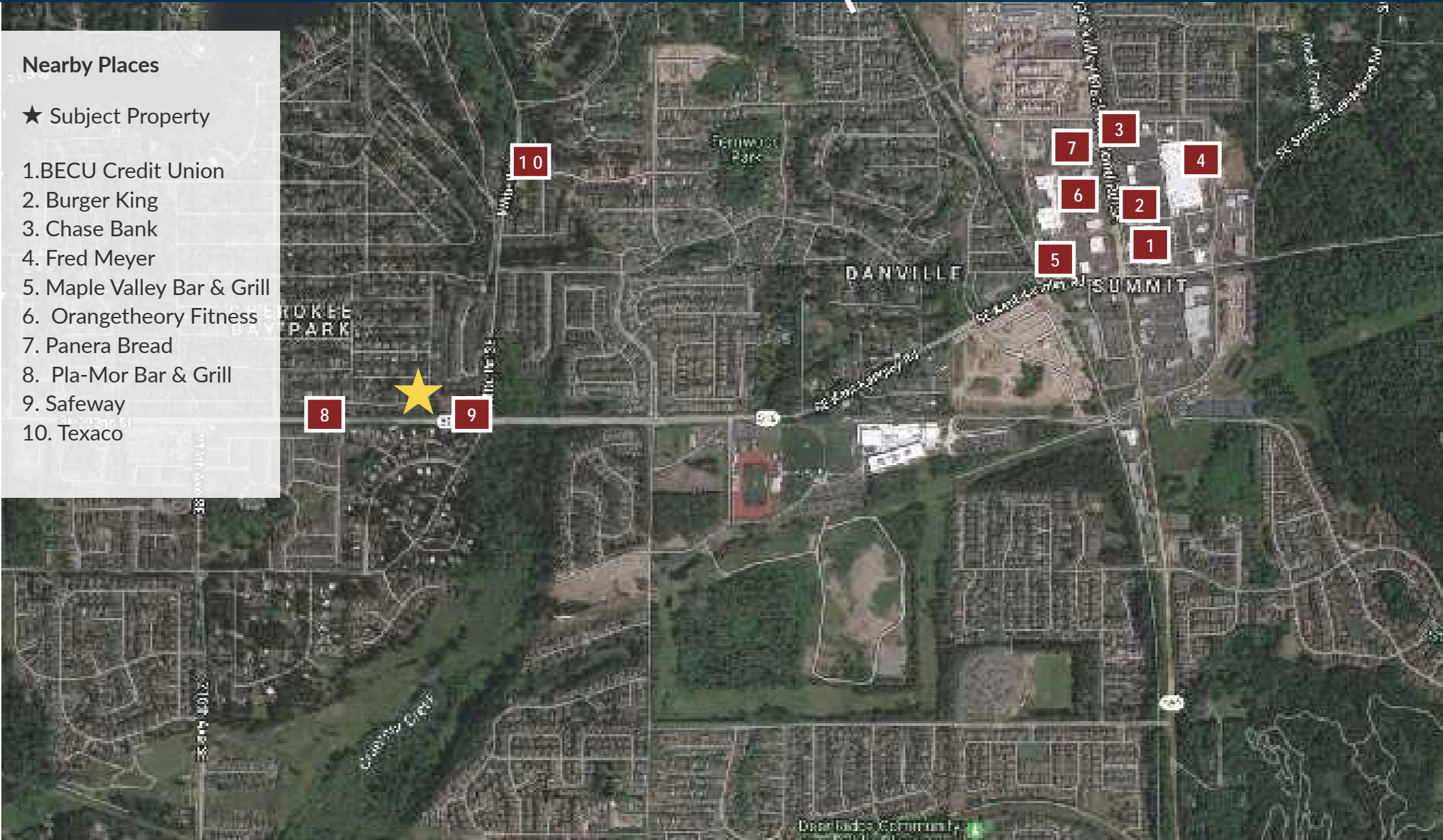
Surrounding Area

22210 SE 272nd St.
Maple Valley, WA 98038

Nearby Places

★ Subject Property

1. BECU Credit Union
2. Burger King
3. Chase Bank
4. Fred Meyer
5. Maple Valley Bar & Grill
6. Orangetheory Fitness
7. Panera Bread
8. Pla-Mor Bar & Grill
9. Safeway
10. Texaco

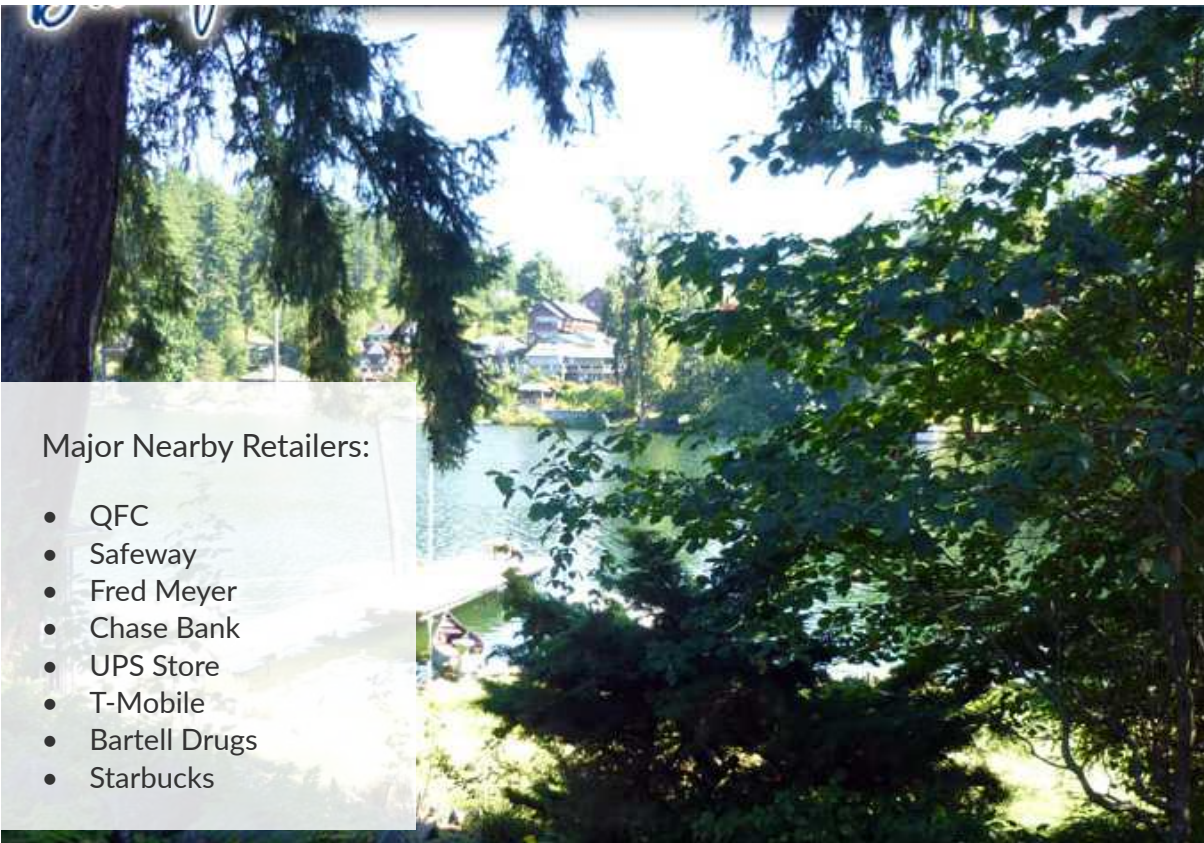
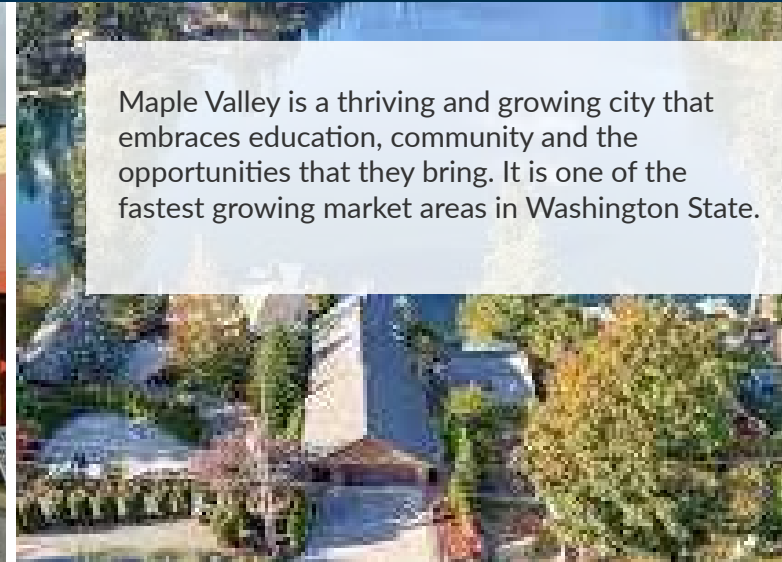


Neighborhood

22218 SE 272nd St.
Maple Valley, WA 98038



Maple Valley is a thriving and growing city that embraces education, community and the opportunities that they bring. It is one of the fastest growing market areas in Washington State.



Major Nearby Retailers:

- QFC
- Safeway
- Fred Meyer
- Chase Bank
- UPS Store
- T-Mobile
- Bartell Drugs
- Starbucks





For more information contact:

Chris Hewitt
D. 206.436.2346 | C. 425.466.0201
chris.hewitt@cannoncommercial.com

**cannon
commercial**

565 13th Avenue Seattle, WA | P: 206.292.0800 | F: info@cannoncommercial.com