



FOR LEASE

# Oakhurst Office Park

1851 Central Place S, Kent, WA

AVAILABLE SF

**1,110-2,510 SF**

PRICE/SF

**\$15.00**

LEASE TYPE

**NNN**

**MIKE GEORGE**

Partner  
+1 425 586 5618  
mgeorge@nai-psp.com

**KYLE STERLING**

Partner  
+1 425 586 5608  
ksterling@nai-psp.com

**TONY RONA**

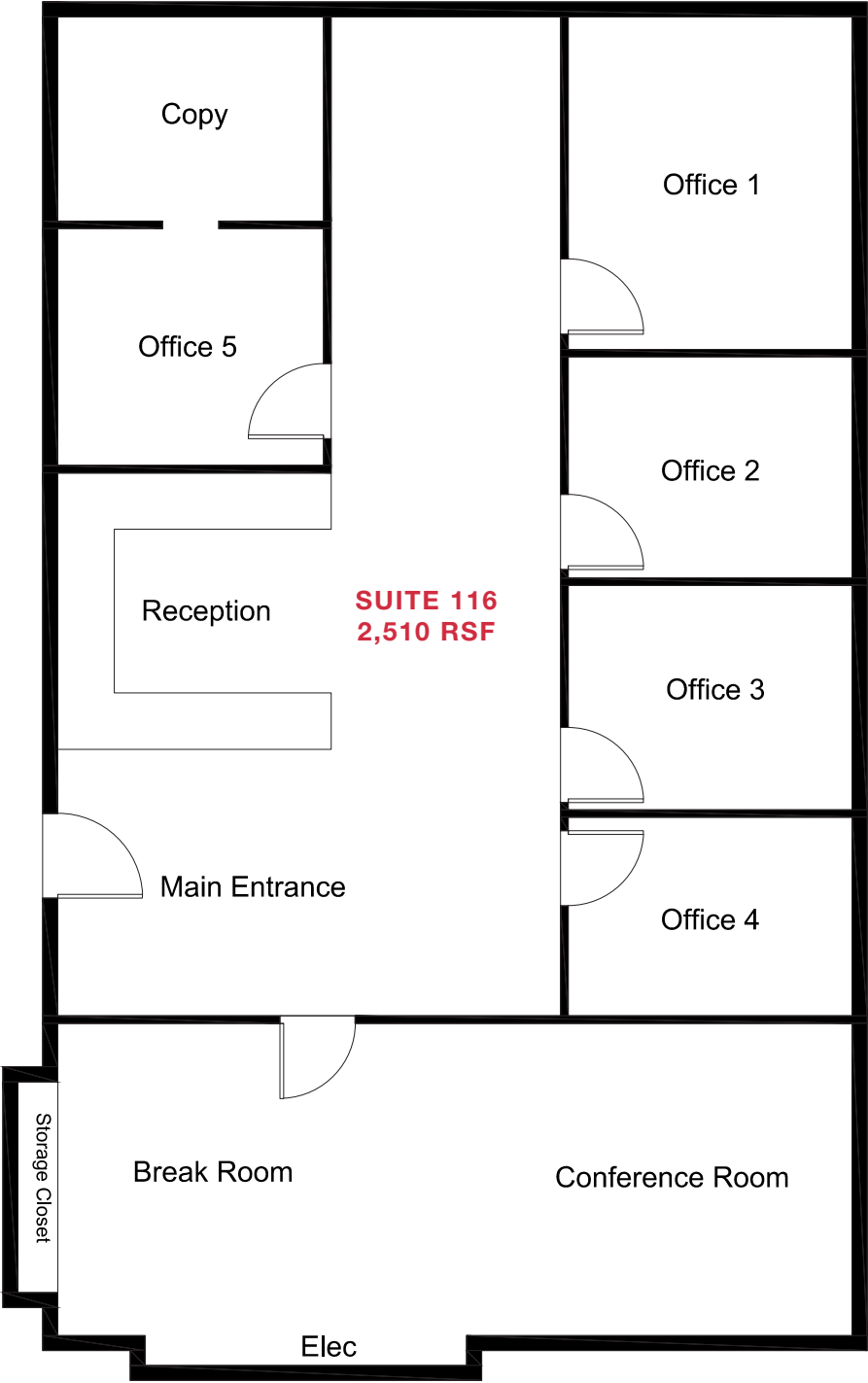
Vice President  
+1 425 586 5634  
trona@nai-psp.com

*Multiple office suites for lease in high profile location just south of Downtown Kent.*

## PROPERTY HIGHLIGHTS

- + Available suites:
  - **Suite 116:** 2,510 RSF – 5 privates, large conference room, reception, break area
  - **Suite 203:** 1,110 RSF – 3 privates, conference room, kitchen, reception
  - **Suite 211:** 2,300 RSF – professional office space, primarily open
- + Well-maintained building – built in 1980
- + Professionally managed
- + Common area kitchen/break lounge for all tenants to enjoy
- + Ample parking
- + Lease Rate: \$15.00/RSF/Year, Triple Net

# Floor Plans



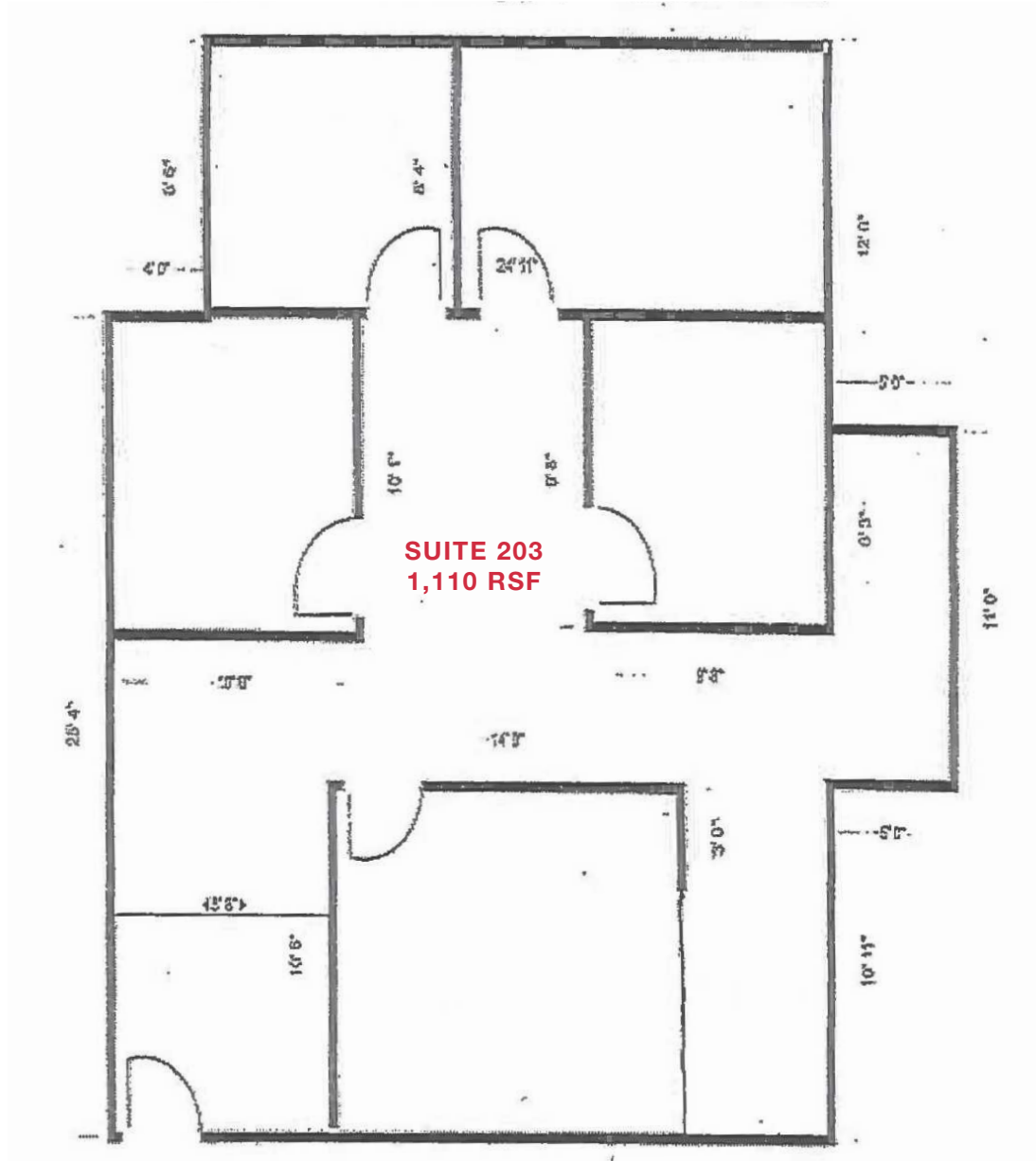
**MIKE GEORGE**  
Partner  
+1 425 586 5618  
mgeorge@nai-psp.com

**KYLE STERLING**  
Partner  
+1 425 586 5608  
ksterling@nai-psp.com

**TONY RONA**  
Vice President  
+1 425 586 5634  
trona@nai-psp.com



# Floor Plans



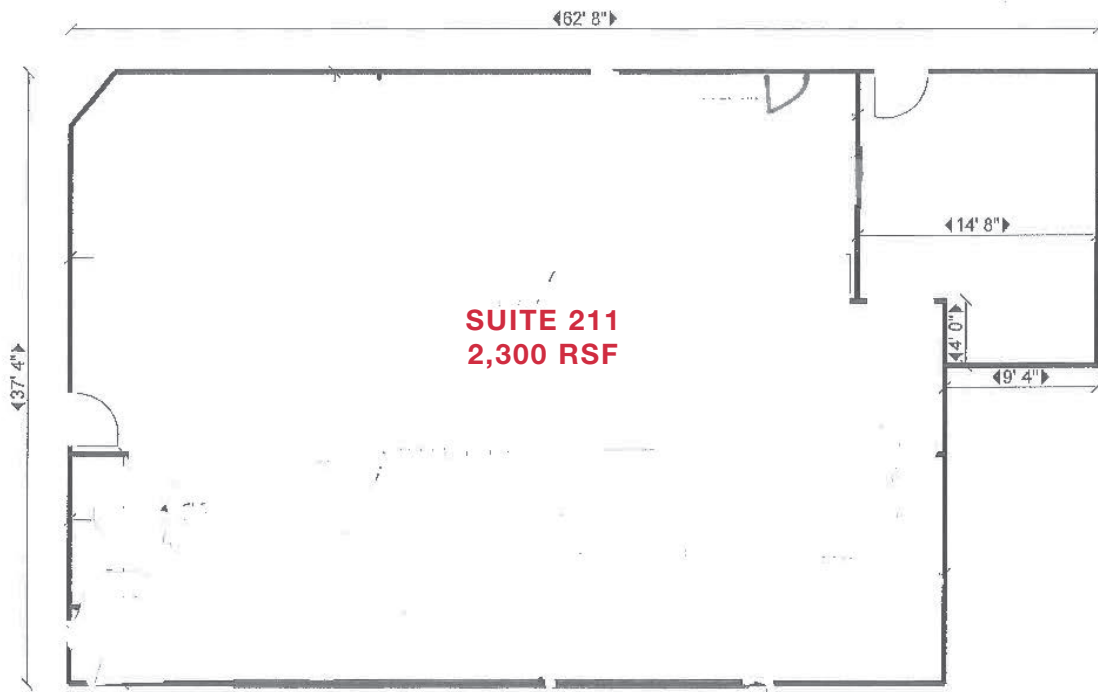
Partner  
+1 425 586 5618  
mgeorge@nai-psp.com

Partner  
+1 425 586 5608  
ksterling@nai-psp.com

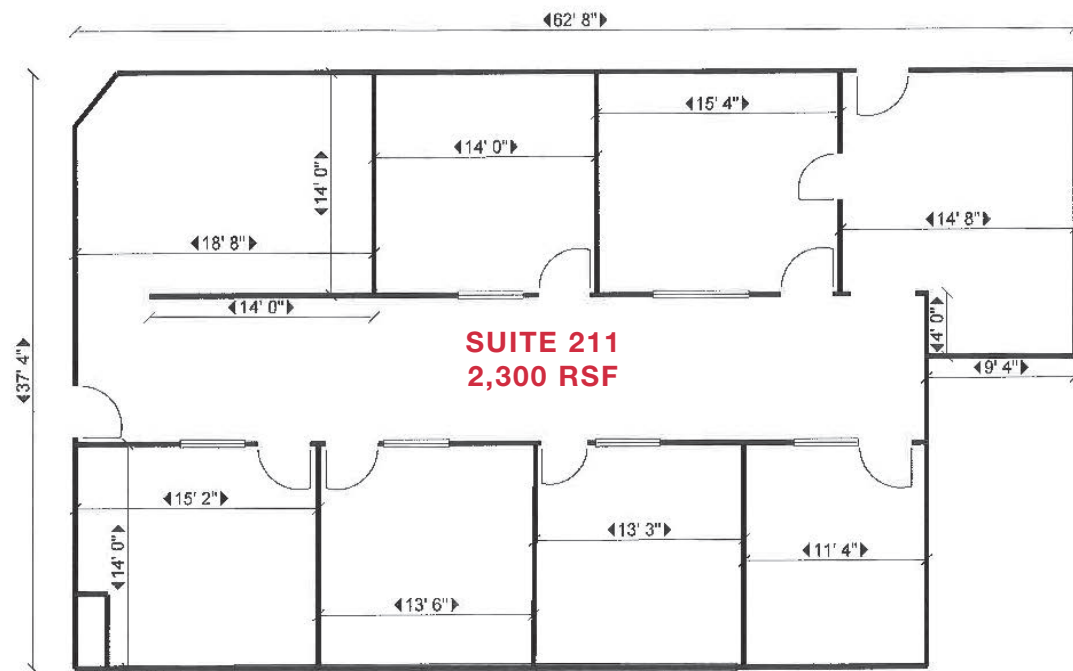
Vice President  
+1 425 586 5634  
trona@nai-psp.com

# Floor Plans

**CURRENT FLOOR PLAN**



**SAMPLE MARKETING PLAN**



**MIKE GEORGE**

Partner  
+1 425 586 5618  
mgeorge@nai-psp.com

**KYLE STERLING**

Partner  
+1 425 586 5608  
ksterling@nai-psp.com

**TONY RONA**

Vice President  
+1 425 586 5634  
trona@nai-psp.com







*Space for lease near  
downtown Kent*

Entryway



Shared Common Area

**MIKE GEORGE**

Partner  
+1 425 586 5618  
mgeorge@nai-psp.com

**KYLE STERLING**

Partner  
+1 425 586 5608  
ksterling@nai-psp.com

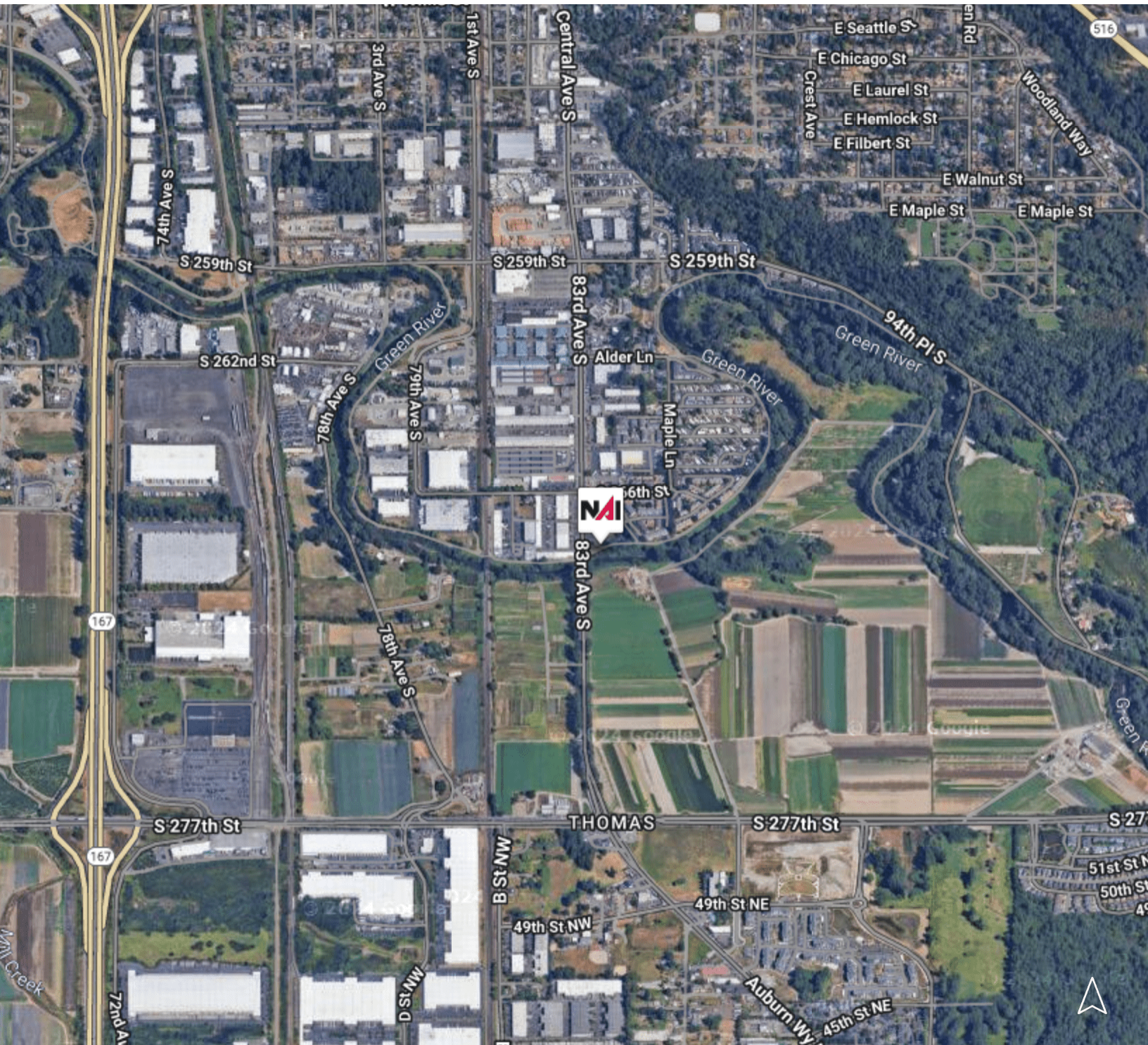
**TONY RONA**

Vice President  
+1 425 586 5634  
trona@nai-psp.com





# Aerial Map



Partner  
+1 425 586 5618  
mgeorge@nai-psp.com

Partner  
+1 425 586 5608  
ksterling@nai-psp.com

Vice President  
+1 425 586 5634  
trona@nai-psp.com