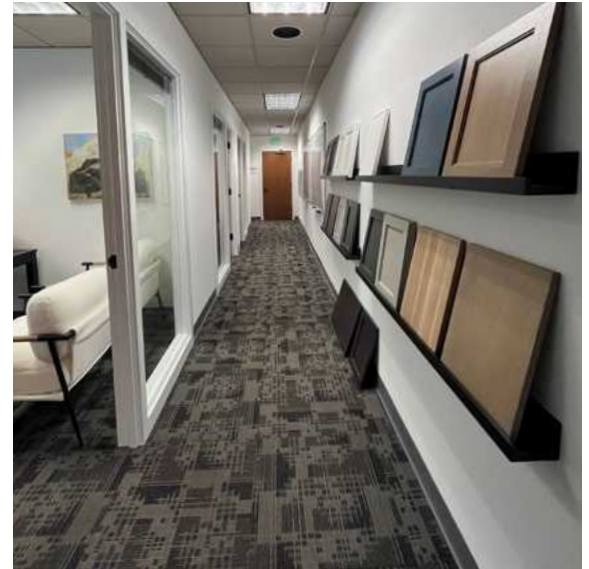


# AVAILABLE OFFICE SPACE

FLOOR 2 | SUITE 230 | 1,780 RSF



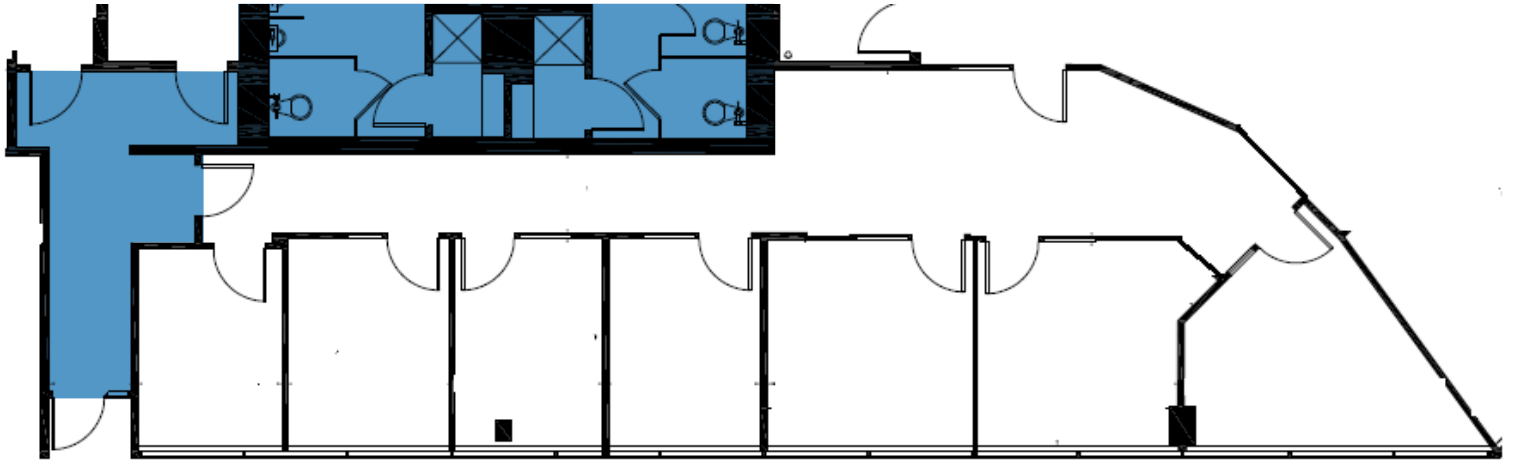
## FOR MORE INFORMATION, PLEASE CONTACT:

Bojidar Gabrovski | bgabrovski@orioncp.com | 847.275.8474  
Jack Franz | jfranz@orioncp.com | 925.482.7232  
Jack Deane | jdeane@orioncp.com | 206.707.1315  
1218 Third Avenue, Suite 2200, Seattle, WA 98101 | orioncp.com

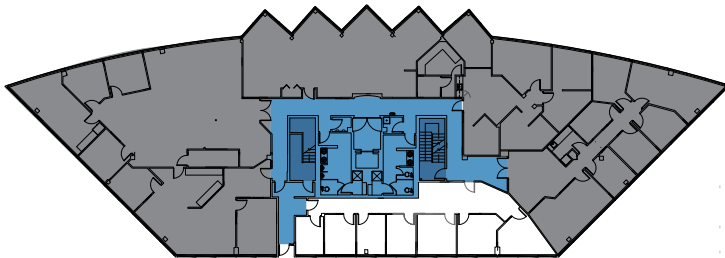
The information contained herein was obtained from sources believed reliable; however, ORION Commercial Partners LLC makes no guarantees, warranties or representations as to the completeness or accuracy thereof. The presentation of this property is submitted subject to errors, omissions, change of price or conditions prior to sale or lease, or withdrawal without notice.

# AVAILABLE OFFICE SPACE

■ VERTICAL PENETRATION ■ BUILDING COMMON AREA



## FLOORPLAN



\*FLOOR PLAN MAY NOT TO SCALE



FLOOR 2 | SUITE 230  
1,780 RSF

### FOR MORE INFORMATION, PLEASE CONTACT:

**Bojidar Gabrovski** | bgabrovski@orioncp.com | 847.275.8474  
**Jack Franz** | jfranz@orioncp.com | 925.482.7232  
**Jack Deane** | jdeane@orioncp.com | 206.707.1315  
1218 Third Avenue, Suite 2200, Seattle, WA 98101 | orioncp.com

The information contained herein was obtained from sources believed reliable; however, ORION Commercial Partners LLC makes no guarantees, warranties or representations as to the completeness or accuracy thereof. The presentation of this property is submitted subject to errors, omissions, change of price or conditions prior to sale or lease, or withdrawal without notice.