

## TWO DETACHED OFFICE AND WAREHOUSE BUILDINGS ON A 52,745 SF LOT | 148 PARKING SPACES

### Property Highlights

- Prime Bel-Red Corridor location
- Adjacent to TSD Light Rail Station
- Lower spaces have 12' overhead doors with 14' clear height
- CenturyLink provides Fiber and DSL



# 124th Plaza

1600 & 1750 124th Avenue NE | Bellevue, WA 98005

**Jeff Kaiser, CCIM** | Senior Vice President | +1 425 453 3145 | [jeff.kaiser@colliers.com](mailto:jeff.kaiser@colliers.com)  
**Liam O'Kelley** | Associate | +1 425 923 0208 | [liam.okelley@colliers.com](mailto:liam.okelley@colliers.com)



MAP  
LOCATION



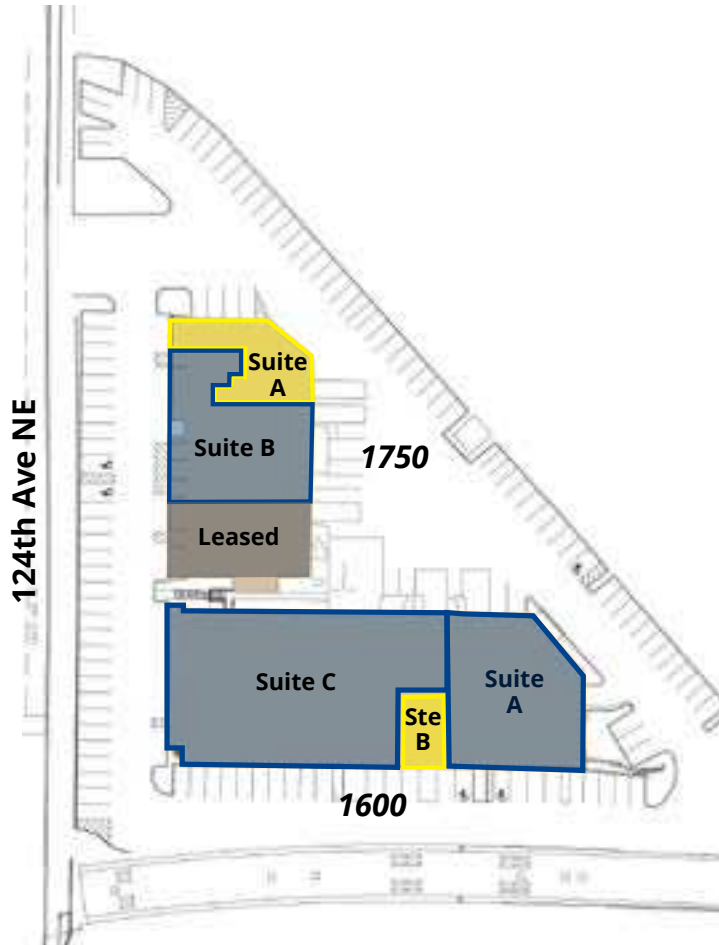
# Availabilities & Site Plan

1750 124th	Suite <b>A</b> Office	2,049 SF
	Suite <b>B</b> Office	4,782 SF
	Suite <b>D</b> Warehouse	1,766 SF
	Suite <b>E</b> Warehouse	3,659 SF
1600 124th	Suite <b>A</b> Office	5,084 SF
	Suite <b>B</b> Office	1,084 SF
	Suite <b>C</b> Office	9,734 SF

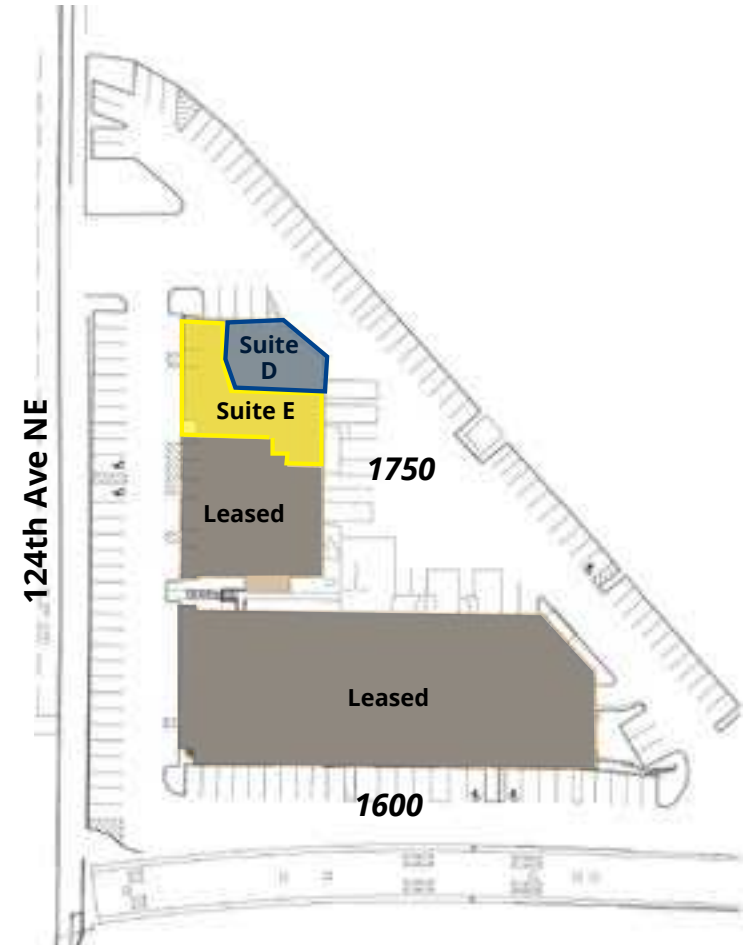
## Rates

- Base Rent - \$24.50/SF/Yr, NNN
- Est. 2025 NNNs - \$7.69 (excludes utilities & janitorial)

Upper Level



Lower Level



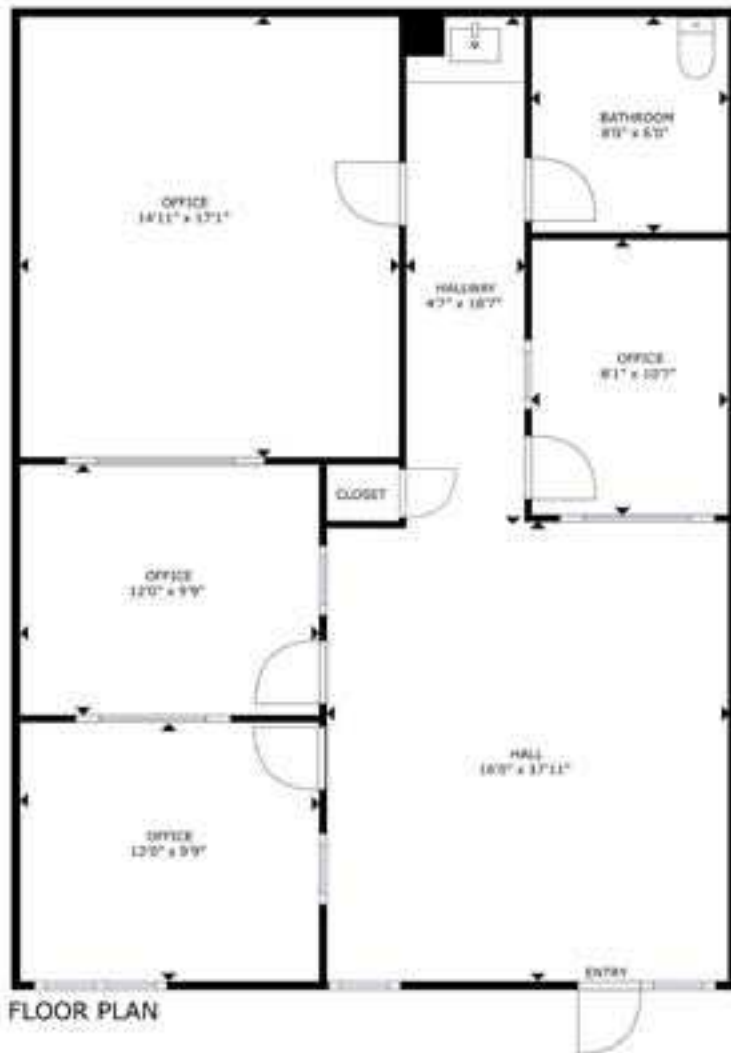
# Exterior Photos






# 1600 124th Ave NE: Upper - Suites A & B

Suite <b>B</b> Office	1,084 SF	 Take Virtual Tour
-----------------------------	----------	--



Suite <b>A</b> Office	5,084 SF	 Take Virtual Tour
-----------------------------	----------	--




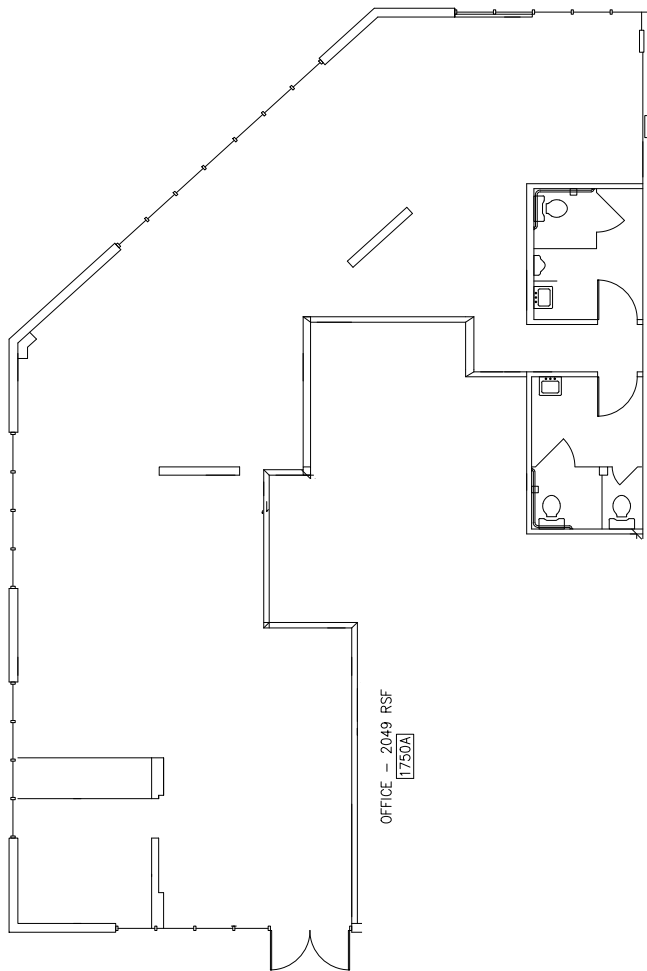
# 1600 124th Ave NE: Upper - Suite C

Suite <b>C</b> Office	9,734 SF	 Take Virtual Tour
-----------------------------	----------	--

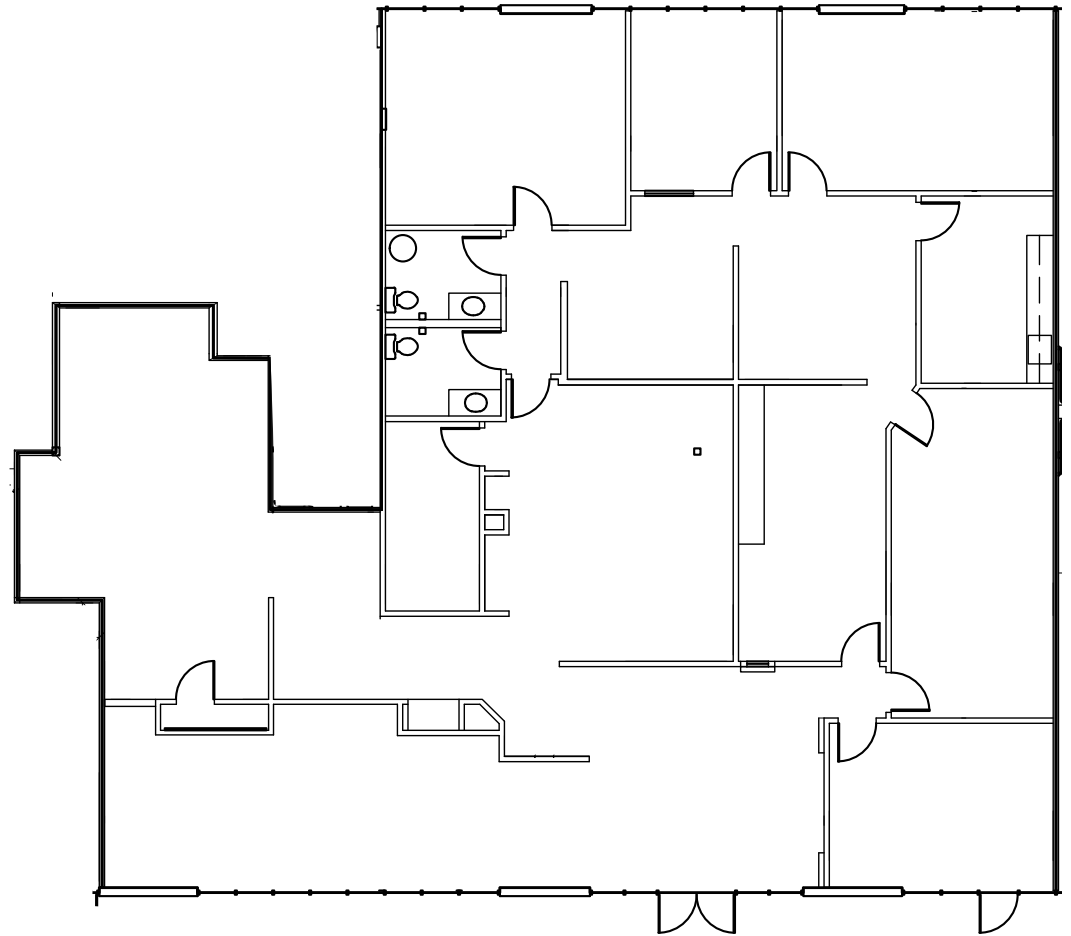


# 1750 124th Ave NE: Upper - Suites A & B

Suite <b>A</b> Office	2,049 SF	 Take Virtual Tour
-----------------------------	----------	--



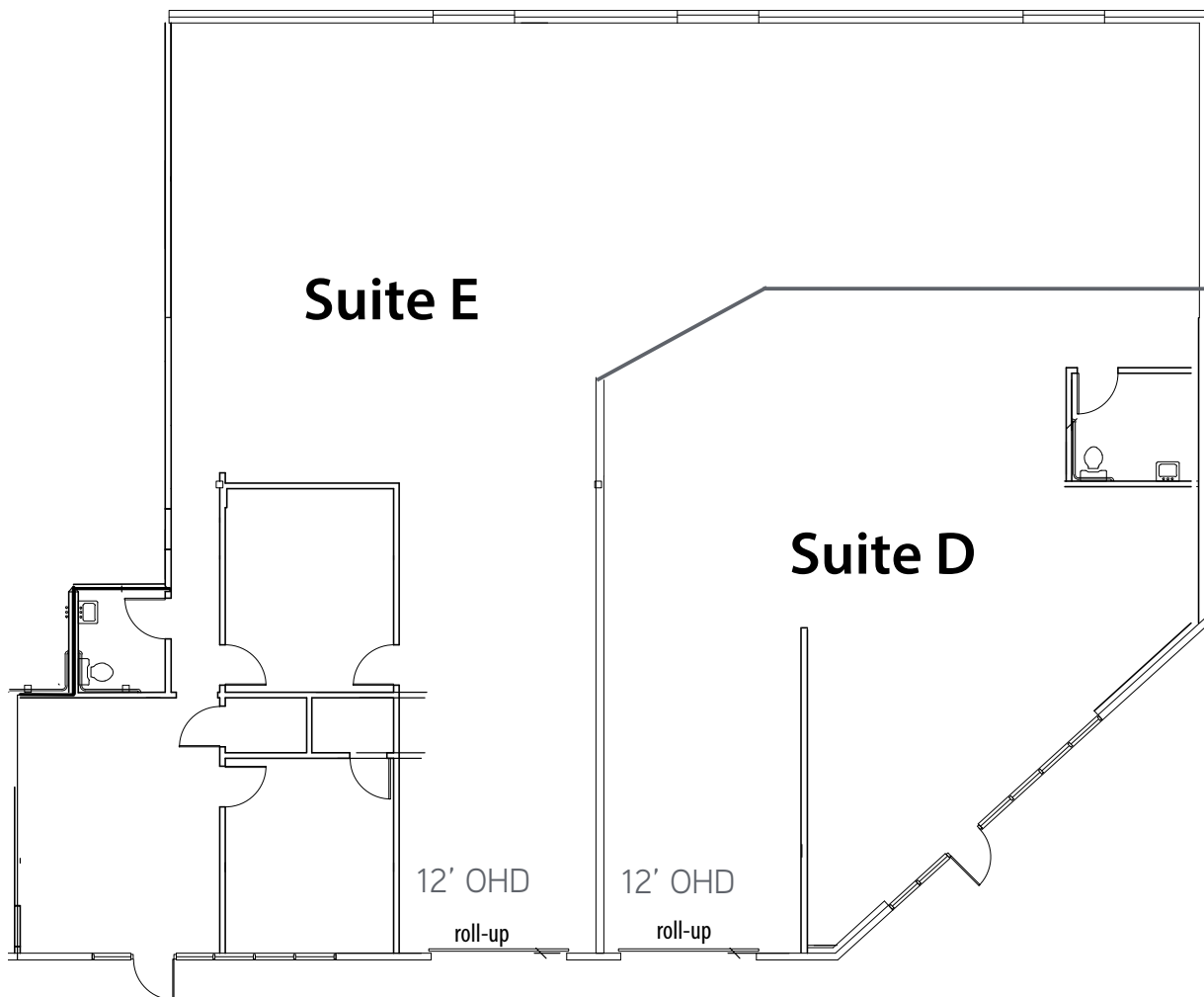
Suite <b>B</b> Office	4,782 SF	 Take Virtual Tour
-----------------------------	----------	--



# 1750 124th Ave NE: Lower - Suites D & E

Suite <b>E</b> Warehouse	3,659 SF	 Take Virtual Tour
--------------------------------	----------	--

Suite <b>D</b> Warehouse	1,766 SF	 Take Virtual Tour
--------------------------------	----------	--

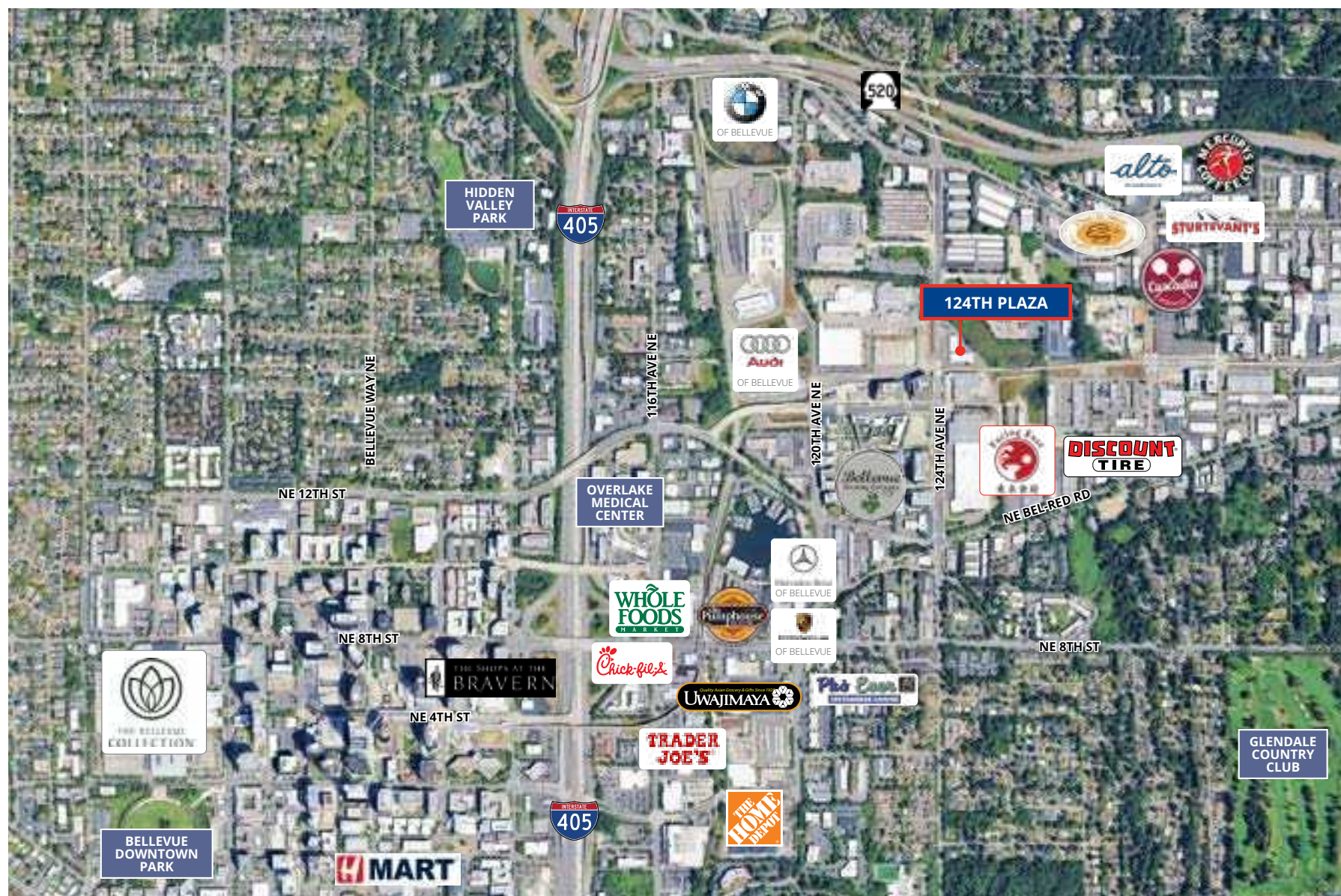


## Space Highlights

- Suites D & E can be combined
- 3-phase power available
- 14' clear height
- Reznor heating
- Restrooms available in each suite
- Grade level loading doors



# Location



**Jeff Kaiser, CCIM** | Senior Vice President | +1 425 453 3145 | [jeff.kaiser@colliers.com](mailto:jeff.kaiser@colliers.com)

**Liam O'Kelley** | Associate | +1 425 923 0208 | [liam.okelley@colliers.com](mailto:liam.okelley@colliers.com)

This document has been prepared by Colliers International for advertising and general information only. Colliers International makes no guarantees, representations or warranties of any kind, expressed or implied, regarding the information including, but not limited to, warranties of content, accuracy and reliability. Any interested party should undertake their own inquiries as to the accuracy of the information. Colliers International excludes unequivocally all inferred or implied terms, conditions and warranties arising out of this document and excludes all liability for loss and damages arising there from. This publication is the copyrighted property of Colliers International and/or its licensor(s). © 2025. All rights reserved.

