



FOR LEASE

# Three Tree Medical Arts Building

16259 SYLVESTER ROAD SW, BURIEN, WA



On Virginia Mason Franciscan  
Health's St. Anne Hospital campus

**BRIAN CLAPP**  
206.248.7316  
brian.clapp@kidder.com

**SPENCER CLAPP**  
206.248.7427  
spencer.clapp@kidder.com

**Kidder  
Mathews**

Building owned and managed by  
**HEALTHCARE REALTY**

This information supplied herein is from sources we deem reliable. It is provided without any representation, warranty, or guarantee, expressed or implied as to its accuracy. Prospective Buyer or Tenant should conduct an independent investigation and verification of all matters deemed to be material, including, but not limited to, statements of income and expenses. Consult your attorney, accountant, or other professional advisor.

**KIDDER.COM**



FOR LEASE

# Three Tree Medical Arts Building

16259 SYLVESTER ROAD SW, BURIEN, WA



**DIRECT**

INTERNAL BUILDING ACCESS  
TO ST. ANNE HOSPITAL

**QUALITY**

MEDICAL BUILD-OUT

**ABUNDANT**

SURFACE & GARAGE PARKING

**AVAILABLE**

SPACES FROM  
797 RSF TO ±5,901 RSF

**ON CAMPUS**

AT VIRGINIA MASON FRANCISCAN  
HEALTH'S ST. ANNE HOSPITAL

**ACCESS**

FROM SR-518, SR-509, I-405, & I-5

KIDDER.COM

This information supplied herein is from sources we deem reliable. It is provided without any representation, warranty, or guarantee, expressed or implied as to its accuracy. Prospective Buyer or Tenant should conduct an independent investigation and verification of all matters deemed to be material, including, but not limited to, statements of income and expenses. Consult your attorney, accountant, or other professional advisor.

**km** Kidder  
Mathews



**FOR LEASE**

# Three Tree Medical Arts Building

16259 SYLVESTER ROAD SW, BURIEN, WA



**3,194 RSF**

**SUITE 302**

**2,000 RSF**

**SUITE 303**

**2,382 RSF**

**SUITE 305**

**3,519 RSF**

**SUITE 304 CAN BE COMBINED  
WITH SUITE 305 FOR ±5,901 RSF**

**933 RSF**

**SUITE 402**

**797 RSF**

**SUITE 403 MOVE-IN READY**

**2,433 RSF**

**SUITE 404 CAN BE COMBINED  
WITH SUITE 403 FOR 3,230 RSF**

**2,446 RSF**

**SUITE 505**

**KIDDER.COM**

This information supplied herein is from sources we deem reliable. It is provided without any representation, warranty, or guarantee, expressed or implied as to its accuracy. Prospective Buyer or Tenant should conduct an independent investigation and verification of all matters deemed to be material, including, but not limited to, statements of income and expenses. Consult your attorney, accountant, or other professional advisor.

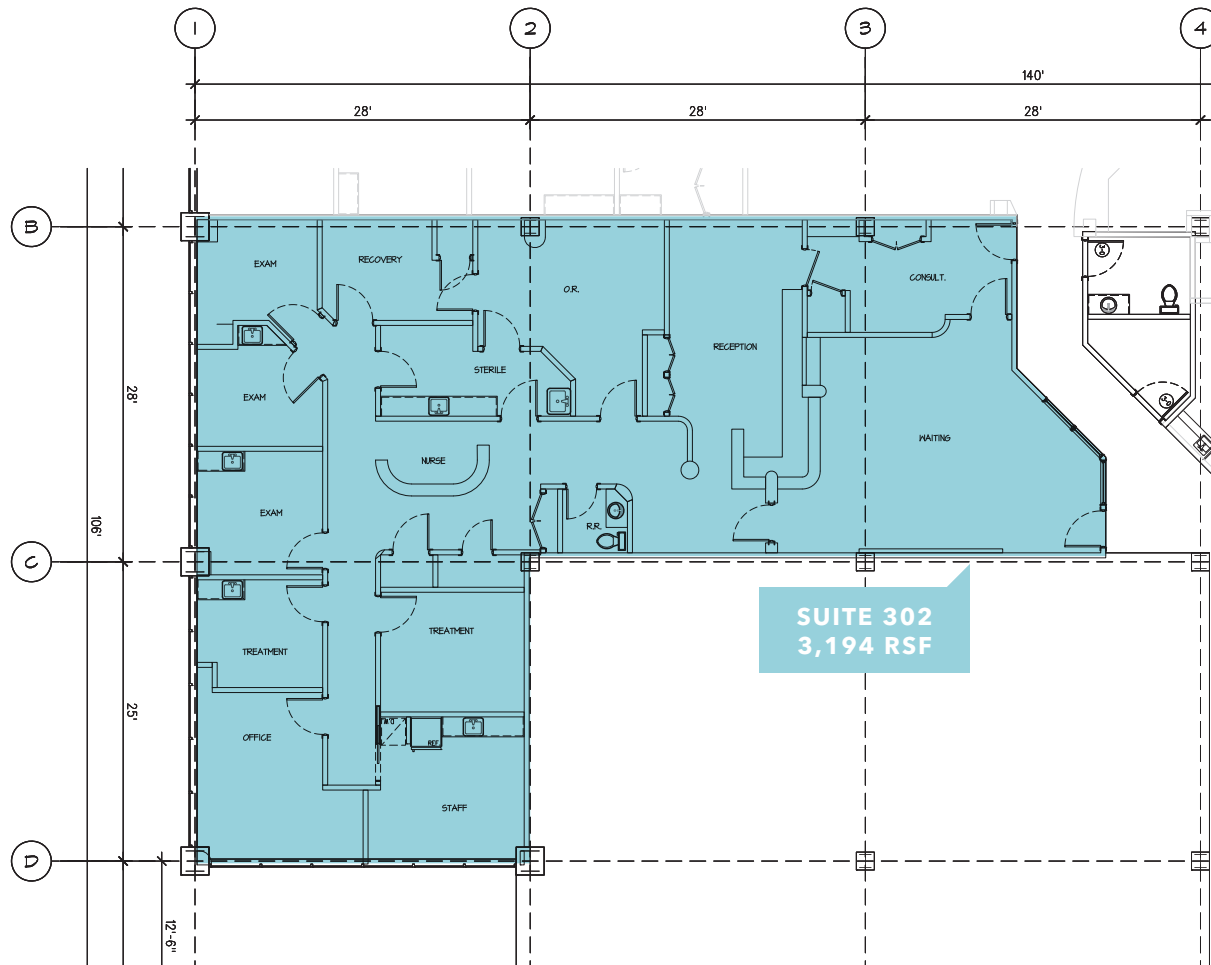
**km Kidder Mathews**

FOR LEASE

# Three Tree Medical Arts Building

16259 SYLVESTER ROAD SW, BURIEN, WA

## Suite 302 Floor Plan



**3,194 RSF**

**SUITE 302**

**BRIAN CLAPP**

206.248.7316

[brian.clapp@kidder.com](mailto:brian.clapp@kidder.com)

**SPENCER CLAPP**

206.248.7427

[spencer.clapp@kidder.com](mailto:spencer.clapp@kidder.com)

**KIDDER.COM**

This information supplied herein is from sources we deem reliable. It is provided without any representation, warranty, or guarantee, expressed or implied as to its accuracy. Prospective Buyer or Tenant should conduct an independent investigation and verification of all matters deemed to be material, including, but not limited to, statements of income and expenses. Consult your attorney, accountant, or other professional advisor.

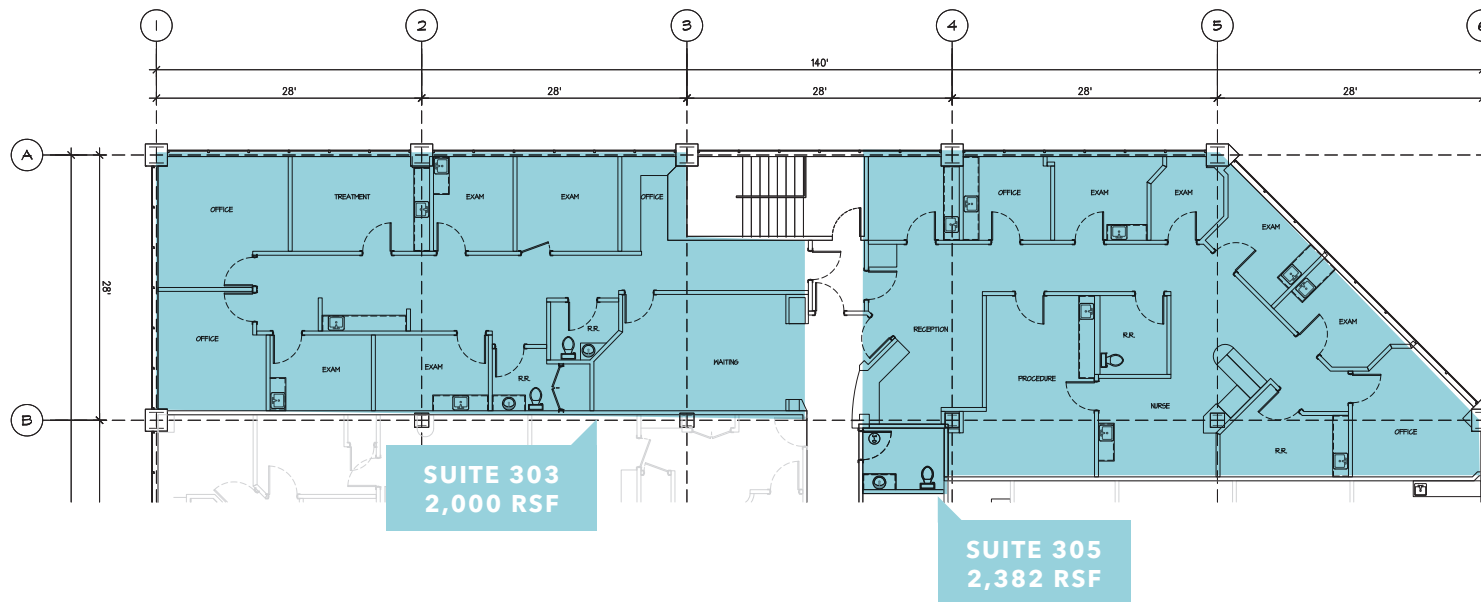
**km Kidder Mathews**

FOR LEASE

# Three Tree Medical Arts Building

16259 SYLVESTER ROAD SW, BURIEN, WA

## Suite 303 Floor Plan



**2,000 RSF**

**SUITE 303**

**2,382 RSF**

**SUITE 305  
CAN BE COMBINED WITH SUITE  
304 FOR 5,901 RSF**

**BRIAN CLAPP**

206.248.7316

[brian.clapp@kidder.com](mailto:brian.clapp@kidder.com)

**SPENCER CLAPP**

206.248.7427

[spencer.clapp@kidder.com](mailto:spencer.clapp@kidder.com)

[KIDDER.COM](http://KIDDER.COM)

This information supplied herein is from sources we deem reliable. It is provided without any representation, warranty, or guarantee, expressed or implied as to its accuracy. Prospective Buyer or Tenant should conduct an independent investigation and verification of all matters deemed to be material, including, but not limited to, statements of income and expenses. Consult your attorney, accountant, or other professional advisor.

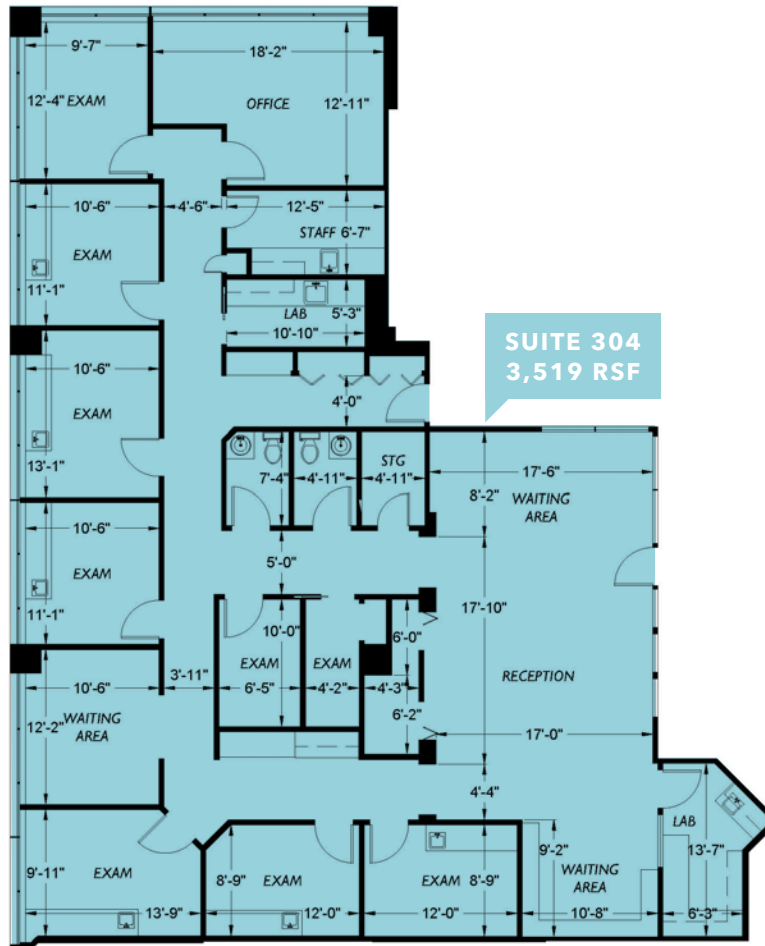
**km Kidder Mathews**

FOR LEASE

# Three Tree Medical Arts Building

16259 SYLVESTER ROAD SW, BURIEN, WA

## Suite 304 Floor Plan



**3,519 RSF**

SUITE 304

**5,901 RSF**

WHEN COMBINED WITH SUITE 305

**BRIAN CLAPP**

206.248.7316

[brian.clapp@kidder.com](mailto:brian.clapp@kidder.com)

**SPENCER CLAPP**

206.248.7427

[spencer.clapp@kidder.com](mailto:spencer.clapp@kidder.com)

KIDDER.COM

This information supplied herein is from sources we deem reliable. It is provided without any representation, warranty, or guarantee, expressed or implied as to its accuracy. Prospective Buyer or Tenant should conduct an independent investigation and verification of all matters deemed to be material, including, but not limited to, statements of income and expenses. Consult your attorney, accountant, or other professional advisor.

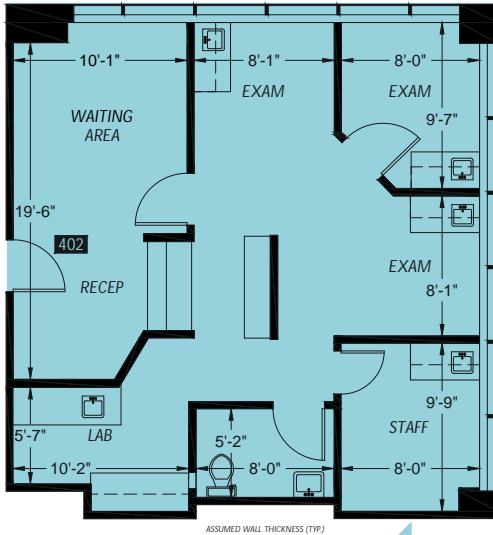
**km Kidder Mathews**

FOR LEASE

# Three Tree Medical Arts Building

16259 SYLVESTER ROAD SW, BURIEN, WA

## Suite 402 Floor Plan



**SUITE 402**  
**933 RSF**



**933 RSF**

**SUITE 402**

**BRIAN CLAPP**

206.248.7316

[brian.clapp@kidder.com](mailto:brian.clapp@kidder.com)

**SPENCER CLAPP**

206.248.7427

[spencer.clapp@kidder.com](mailto:spencer.clapp@kidder.com)

**KIDDER.COM**

This information supplied herein is from sources we deem reliable. It is provided without any representation, warranty, or guarantee, expressed or implied as to its accuracy. Prospective Buyer or Tenant should conduct an independent investigation and verification of all matters deemed to be material, including, but not limited to, statements of income and expenses. Consult your attorney, accountant, or other professional advisor.

**km Kidder Mathews**

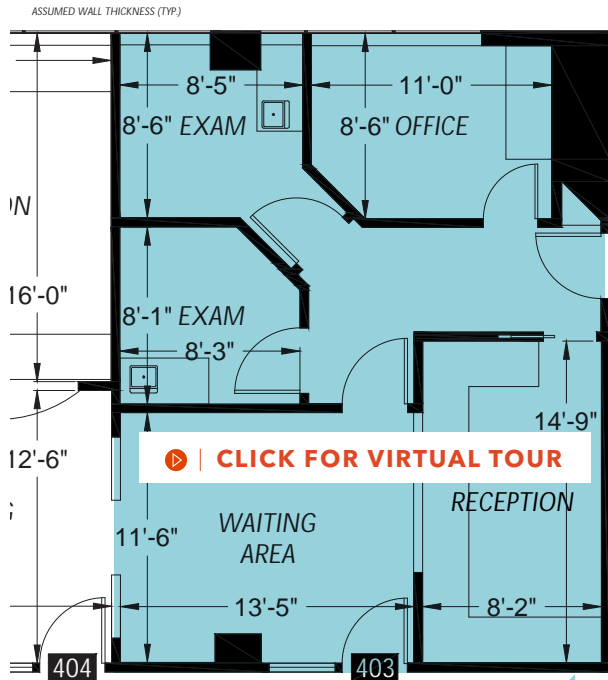


**FOR LEASE**

# Three Tree Medical Arts Building

16259 SYLVESTER ROAD SW, BURIEN, WA

## Suite 403 Floor Plan | Move-in-Ready



[CLICK FOR VIRTUAL TOUR](#)

**SUITE 403**  
**797 RSF**



**797 RSF**

**SUITE 403**

**MOVE-IN-READY**

**BRIAN CLAPP**

206.248.7316

[brian.clapp@kidder.com](mailto:brian.clapp@kidder.com)

**SPENCER CLAPP**

206.248.7427

[spencer.clapp@kidder.com](mailto:spencer.clapp@kidder.com)

**KIDDER.COM**

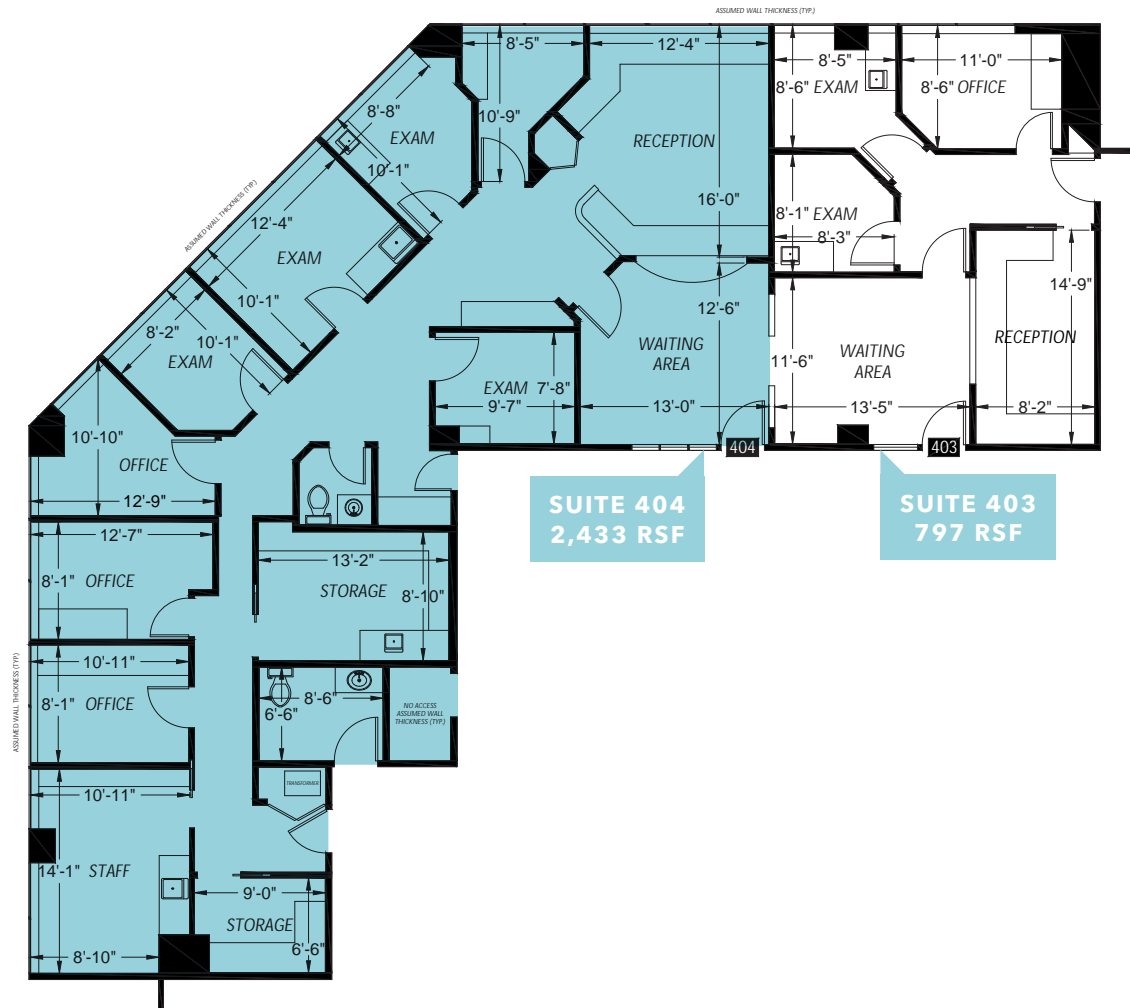
This information supplied herein is from sources we deem reliable. It is provided without any representation, warranty, or guarantee, expressed or implied as to its accuracy. Prospective Buyer or Tenant should conduct an independent investigation and verification of all matters deemed to be material, including, but not limited to, statements of income and expenses. Consult your attorney, accountant, or other professional advisor.

**km Kidder Mathews**



# Three Tree Medical Arts Building

## Suite 404 Floor Plan



spencer.clapp@kidder.com

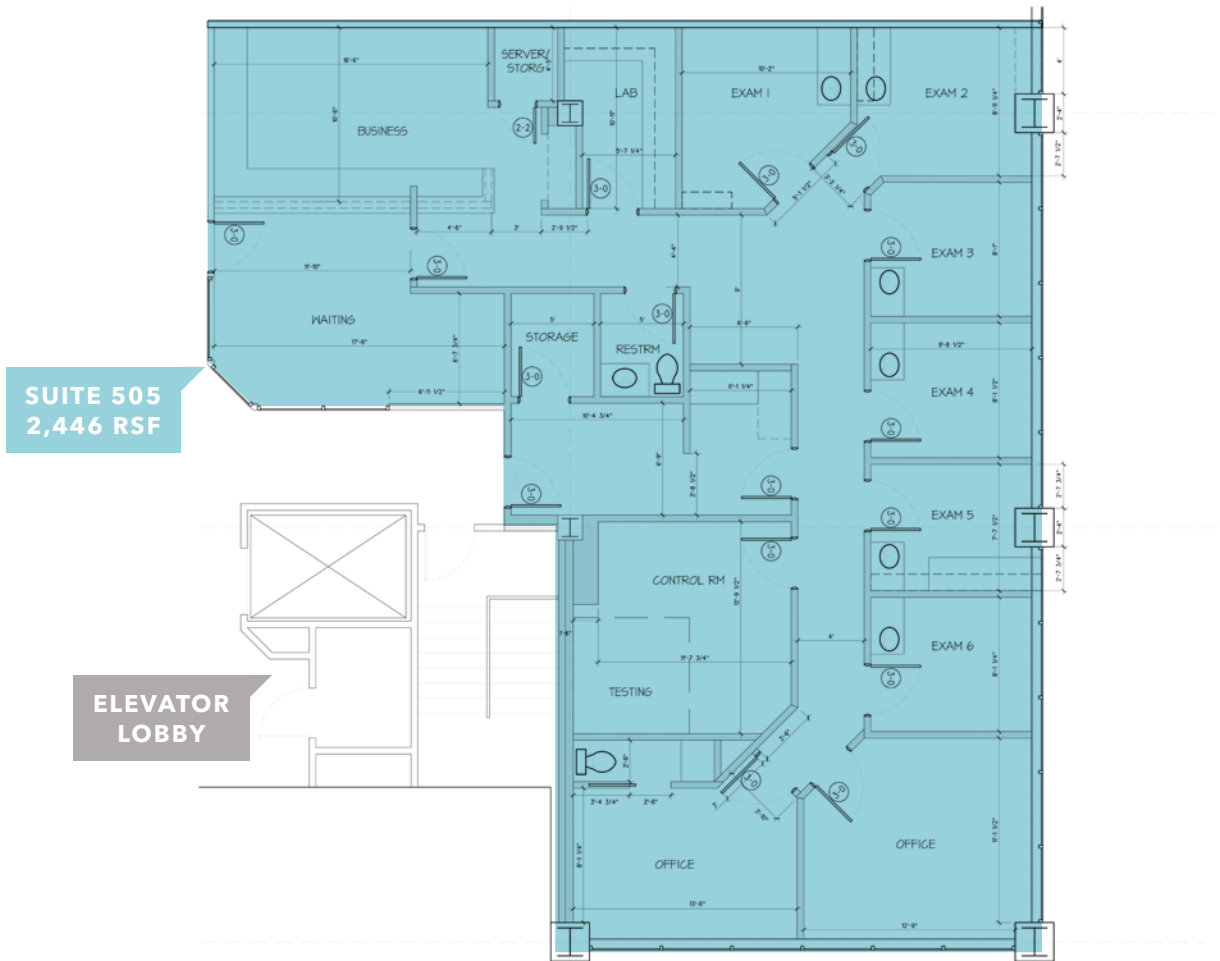


FOR LEASE

# Three Tree Medical Arts Building

16259 SYLVESTER ROAD SW, BURIEN, WA

## Suite 505 Floor Plan



2,446 RSF

SUITE 505

**BRIAN CLAPP**

206.248.7316

[brian.clapp@kidder.com](mailto:brian.clapp@kidder.com)

**SPENCER CLAPP**

206.248.7427

[spencer.clapp@kidder.com](mailto:spencer.clapp@kidder.com)

KIDDER.COM

This information supplied herein is from sources we deem reliable. It is provided without any representation, warranty, or guarantee, expressed or implied as to its accuracy. Prospective Buyer or Tenant should conduct an independent investigation and verification of all matters deemed to be material, including, but not limited to, statements of income and expenses. Consult your attorney, accountant, or other professional advisor.

**km** Kidder Mathews