



# Office Spaces for Lease

## 1120 N Mullan

### Spokane Valley, WA

Levi McCormick  
W: 509.868.2125  
levi@sdsrealty.com

Carlos Herrera  
C: 509.714.2593  
carlos@sdsrealty.com

[www.sdsrealty.com](http://www.sdsrealty.com)

SDS REALTY INC 108 N WASHINGTON #600, SPOKANE WA. 99201

This information has been secured from sources we believe to be reliable, but we make no representations or warranties, express or implied, as to the accuracy of the information. References to square footage or age are approximate. Buyer/tenant must verify the information and bears all risks for any inaccuracies.

# SUITES FOR LEASE

Carlos Herrera  
C: 509.714.2593  
carlos@sdsrealty.com

Levi McCormick  
W: 509.868.2125  
levi@sdsrealty.com



**Lease Rate:**

**\$15/SF/Year**

**Full Service**

**(Tenant pays Janitorial)**

**Easy Access to I-90**

**Ample Parking On-Site**

**Signage Available**

**Suite 202+/- 2,185 RSF**

- **6 Private Offices**
- **Conference Room**
- **Reception Area**
- **Open work Area**
- **Waiting Area**
- **Kitchenette**
- **Storage/It room**

**Suite 210+/- 1,725 RSF**

- **5 Private Offices**
- **Conference Room**
- **Reception Area**
- **Break room**
- **Storage Room**

[www.sdsrealty.com](http://www.sdsrealty.com)

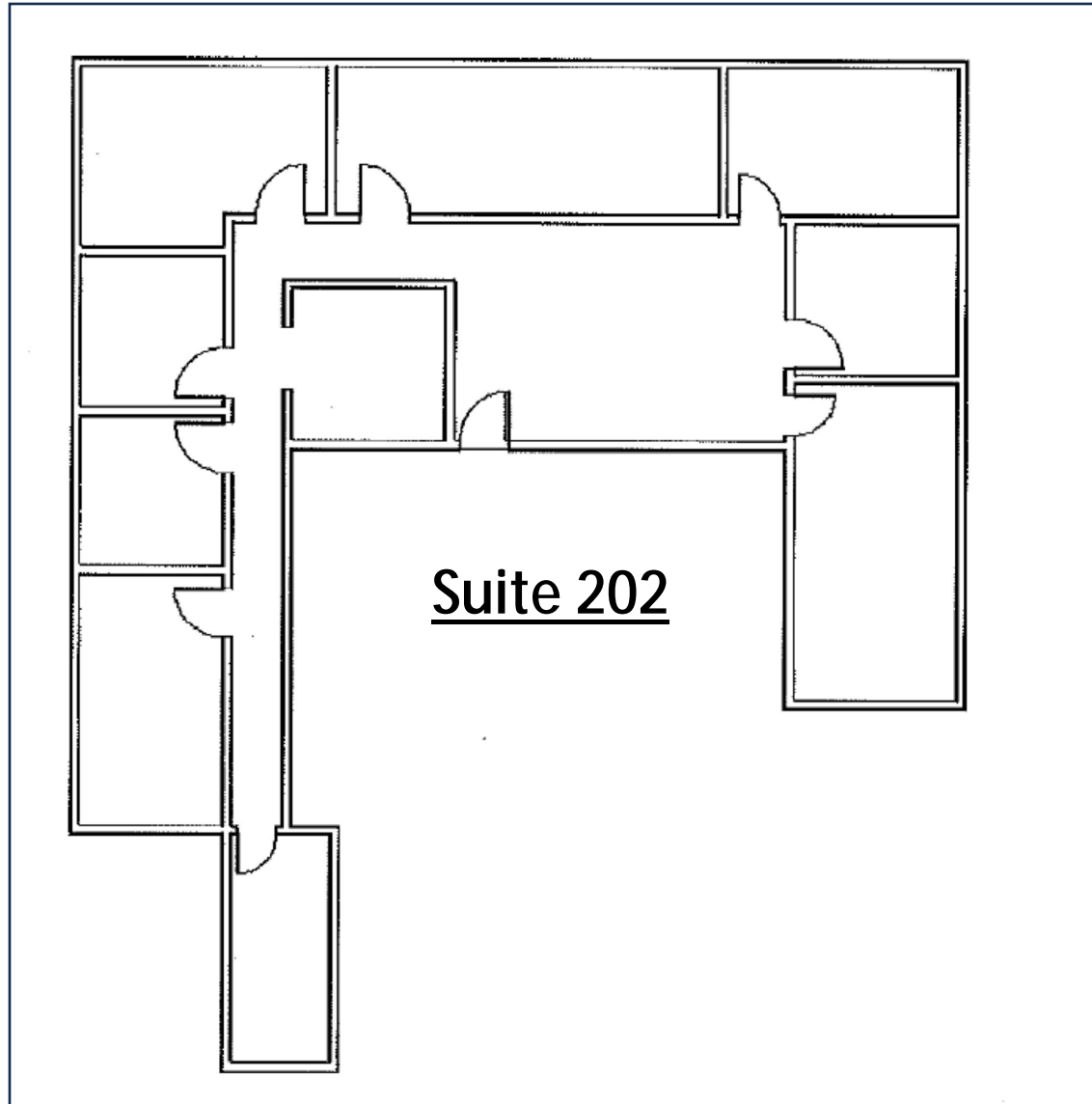
SDS REALTY INC 108 N WASHINGTON #600, SPOKANE WA. 99201

This information has been secured from sources we believe to be reliable, but we make no representations or warranties, express or implied, as to the accuracy of the information. References to square footage or age are approximate. Buyer/tenant must verify the information and bears all risks for any inaccuracies.

# SUITES FOR LEASE

Carlos Herrera  
C: 509.714.2593  
carlos@sdsrealty.com

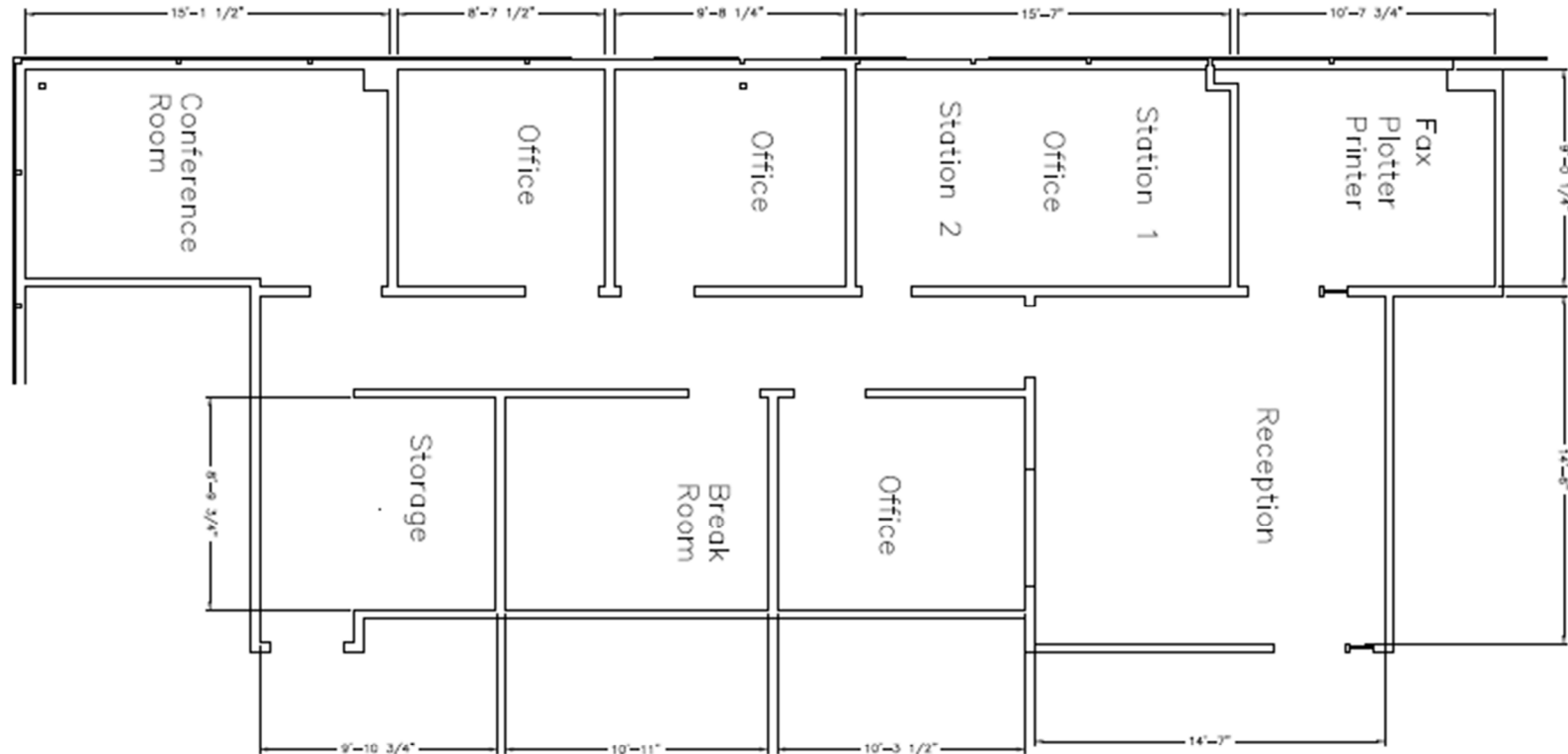
Levi McCormick  
W: 509.868.2125  
levi@sdsrealty.com



# SUITES FOR LEASE

Carlos Herrera  
C: 509.714.2593  
carlos@sdsrealty.com

Levi McCormick  
W: 509.868.2125  
levi@sdsrealty.com



## Suite 210