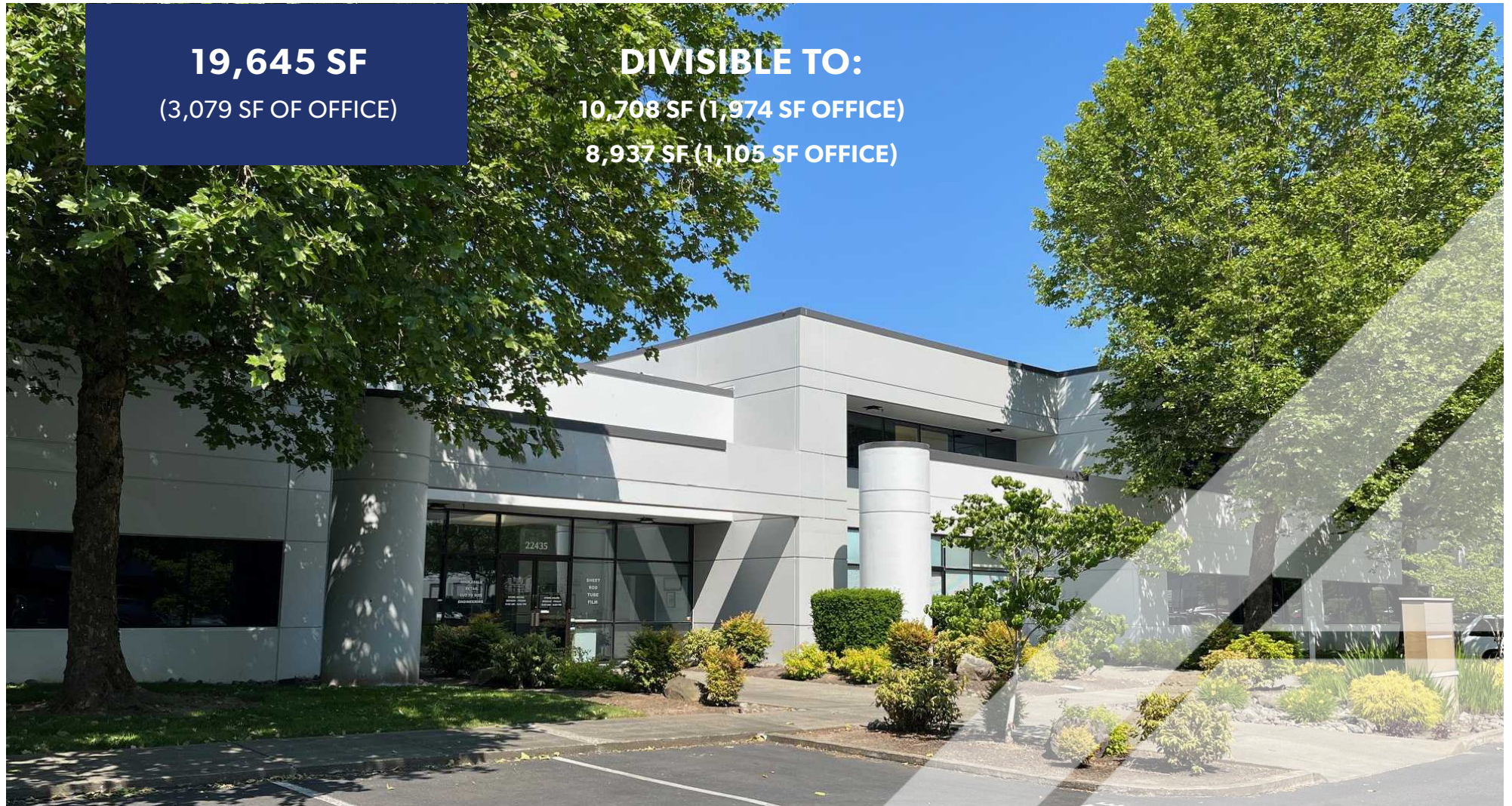


19,645 SF
(3,079 SF OF OFFICE)

DIVISIBLE TO:
10,708 SF (1,974 SF OFFICE)
8,937 SF (1,105 SF OFFICE)



LANDING CENTER, BLDG A

22431 - 22435 68TH AVE S | KENT, WA

BRIAN BRUININKS, CCIM
(206) 856-6249
bbruininks@andoverco.com

SHANE MAHVI
(858) 442-0441
smahvi@andoverco.com

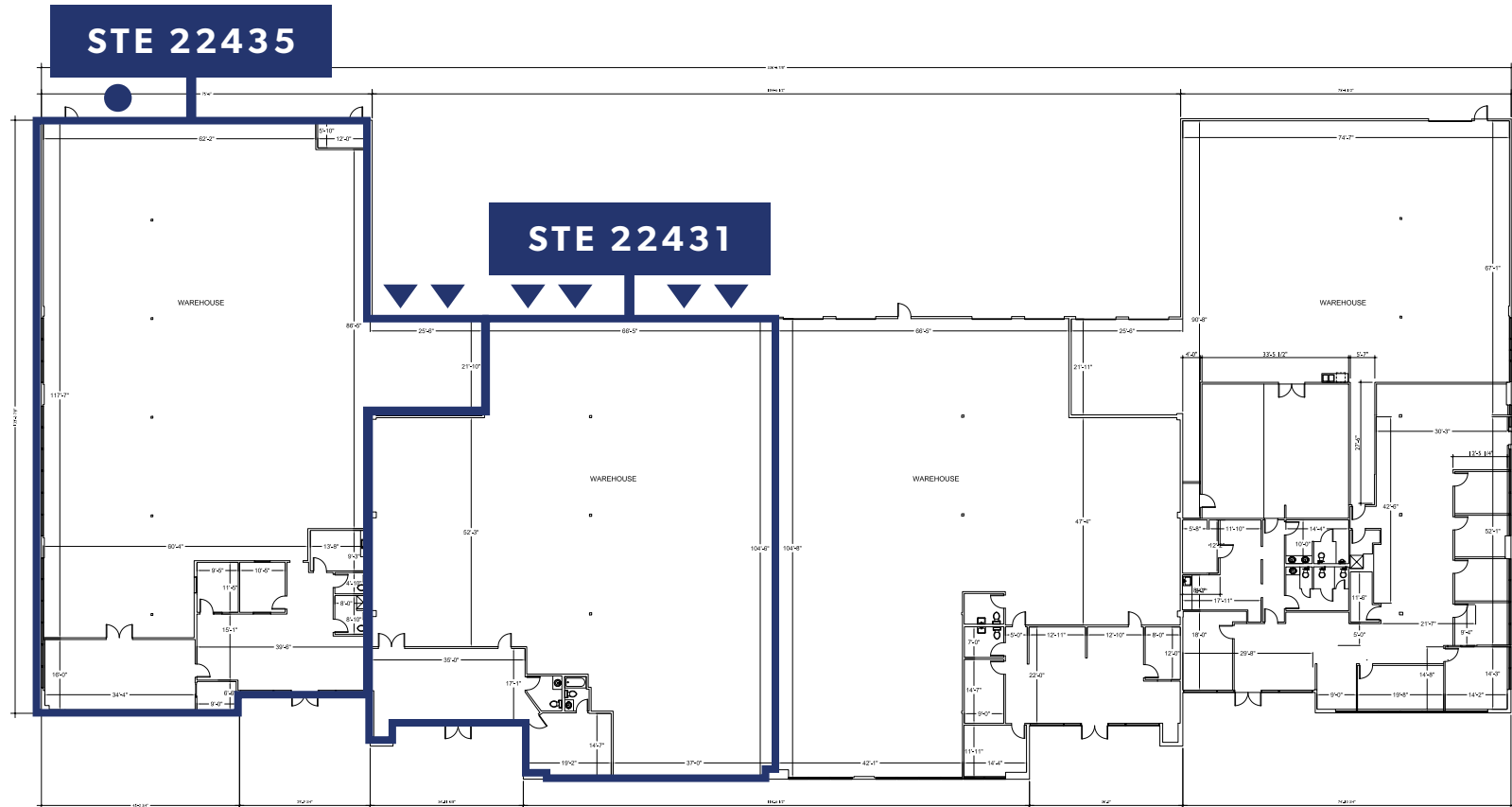
 **THE ANDOVER
COMPANY, INC.**
CORFAC INTERNATIONAL

VACANCIES

ALL SPACES AVAILABLE NOW

BUILDING	SF AVAILABLE WAREHOUSE OFFICE	DATE AVAILABLE	LOADING CEILING HEIGHT	ASKING RATE (+ NNN'S)	ADDITIONAL INFO
A Ste 22431	8,937 SF (1,105 SF office)	10/01/2025	4 DH 22'	Call brokers for rates	Class A north endcap space located on West Valley Highway. This space has great parking, visibility to West Valley Highway. Mostly open showroom/office. Please call Brokers to arrange tours.
A Ste 22435	10,708 SF (1,974 SF office)	10/01/2025	2 DH 1 GL 18' - 22'	Call brokers for rates	Class A north endcap space located on West Valley Highway. This space has great parking, visibility to West Valley Highway. Mostly open showroom/office. Please call Brokers to arrange tours.
A Ste 22431 + Ste 22435	19,645 SF (3,079 SF office)	10/01/2025	6 DH 1 GL 18' - 22'	Call brokers for rates	Class A north endcap space located on West Valley Highway. This space has great parking, visibility to West Valley Highway. Combined suites. End cap space with two entries, showroom/office space. Please call Brokers to arrange tours.

FLOOR PLAN

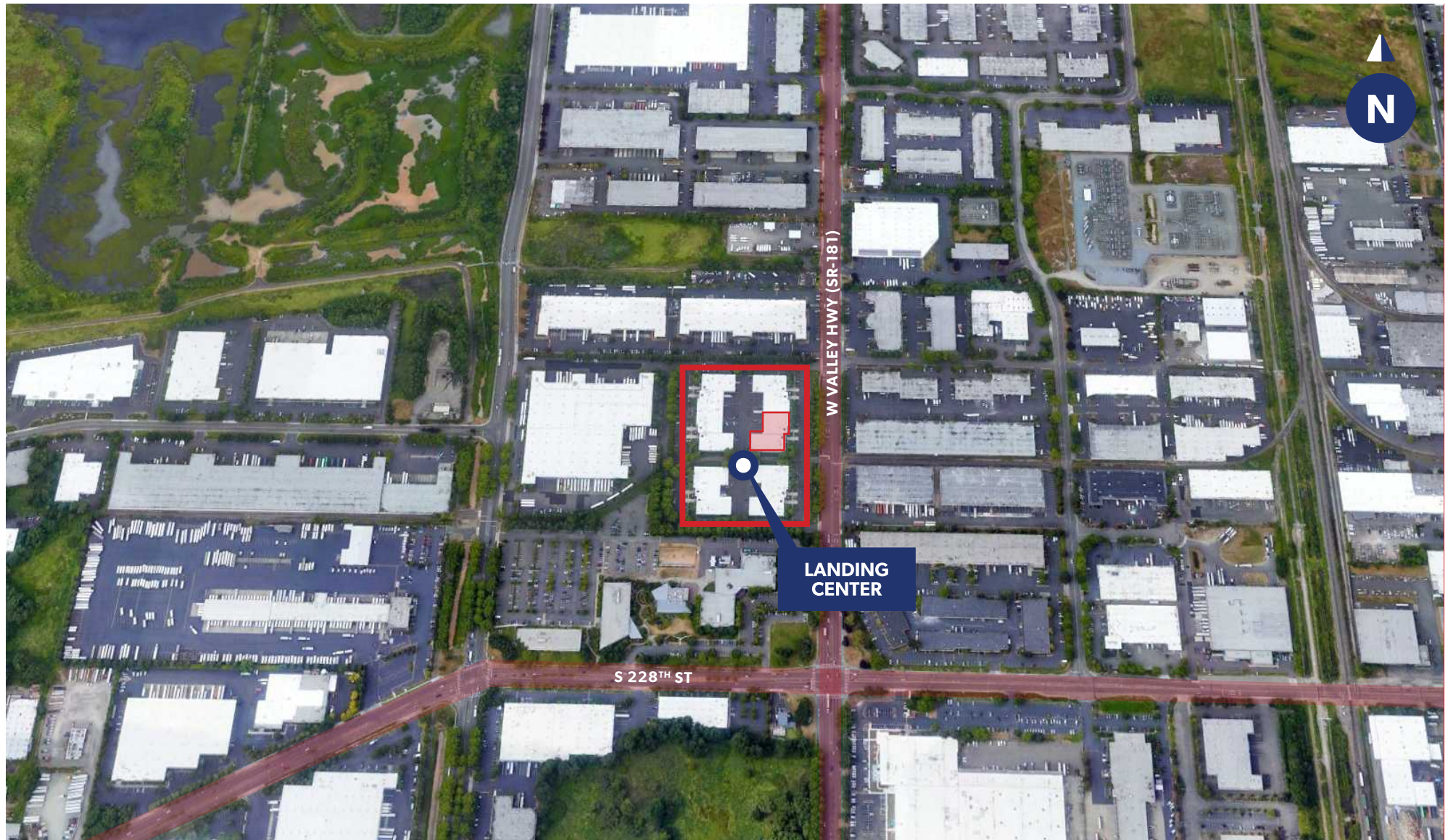


▲ Dock high door

● Drive-in door

The information contained herein has been obtained from reliable sources, but is not guaranteed. A prospective buyer/tenant should verify each item relating to this property and all information contained herein.

LOCATION MAP



BRIAN BRUININKS, CCIM
(206) 856-6249
bbruininks@andoverco.com

SHANE MAHVI
(858) 442-0441
smahvi@andoverco.com

 **THE ANDOVER
COMPANY, INC.**
CORFAC INTERNATIONAL