

# FOR LEASE

## Former Pier 1



**1220 S. Burlington Blvd., Burlington, WA**

Free Standing former Pier 1 with 400' of frontage on busy Burlington Blvd, in the heart of Burlington's busy retail corridor. The Building anchors Four Pines Plaza retail center adjacent to the highly rated Four Season Buffet, as well as dental offices and other retail uses. 96 new apartment units occupy the easterly portion of the complex. MUC-2 (mixed use commercial) zoning allows for a variety of uses. Adaptive re-use of the Building could include retail, specialty grocer, medical, fitness, brewery, auto parts and accessories, furniture, etc.

### Key Features:

**Free standing 9,460 sf Building**

**Stock room with rear receiving door**

**Admin offices and two ADA restrooms**

**Generous parking**

**\$12.00 psf, NNN**

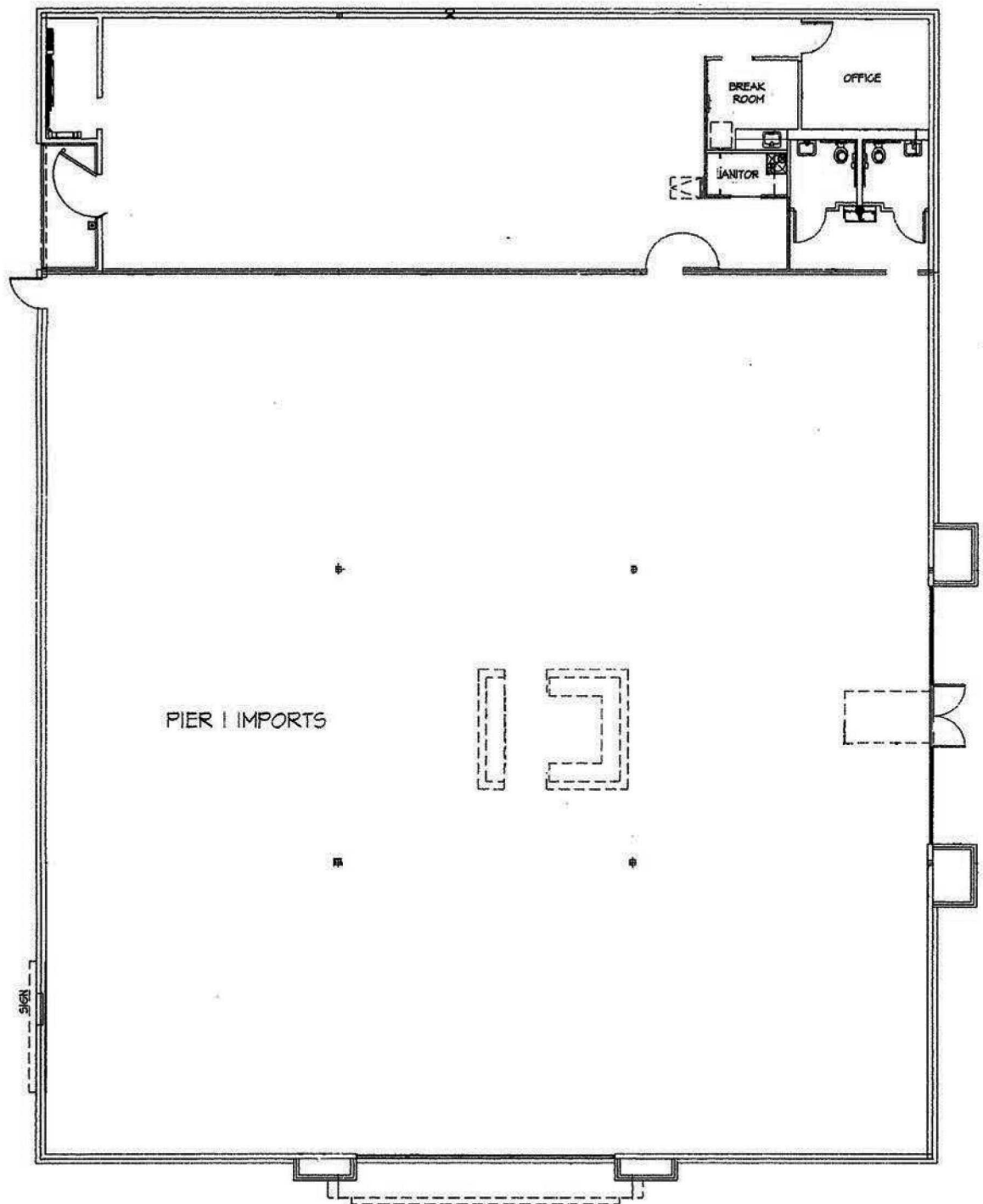


## **RAMALEY** PROPERTIES, INC.

**Mark Ramaley • P: 360-629-9300 • C: 206-818-2707 • [mark@ramaleyproperties.com](mailto:mark@ramaleyproperties.com)**

This information supplied herein is from sources we deem reliable. It is provided without any representation, warranty or guarantee, expressed or implied as to its accuracy. Prospective Buyer or Tenant should conduct an independent investigation and verification of all matters deemed to be material, including, but not limited to, statements of income and expenses. Consult your attorney, accountant, or other professional advisor.

# Former Pier 1 FLOOR PLAN

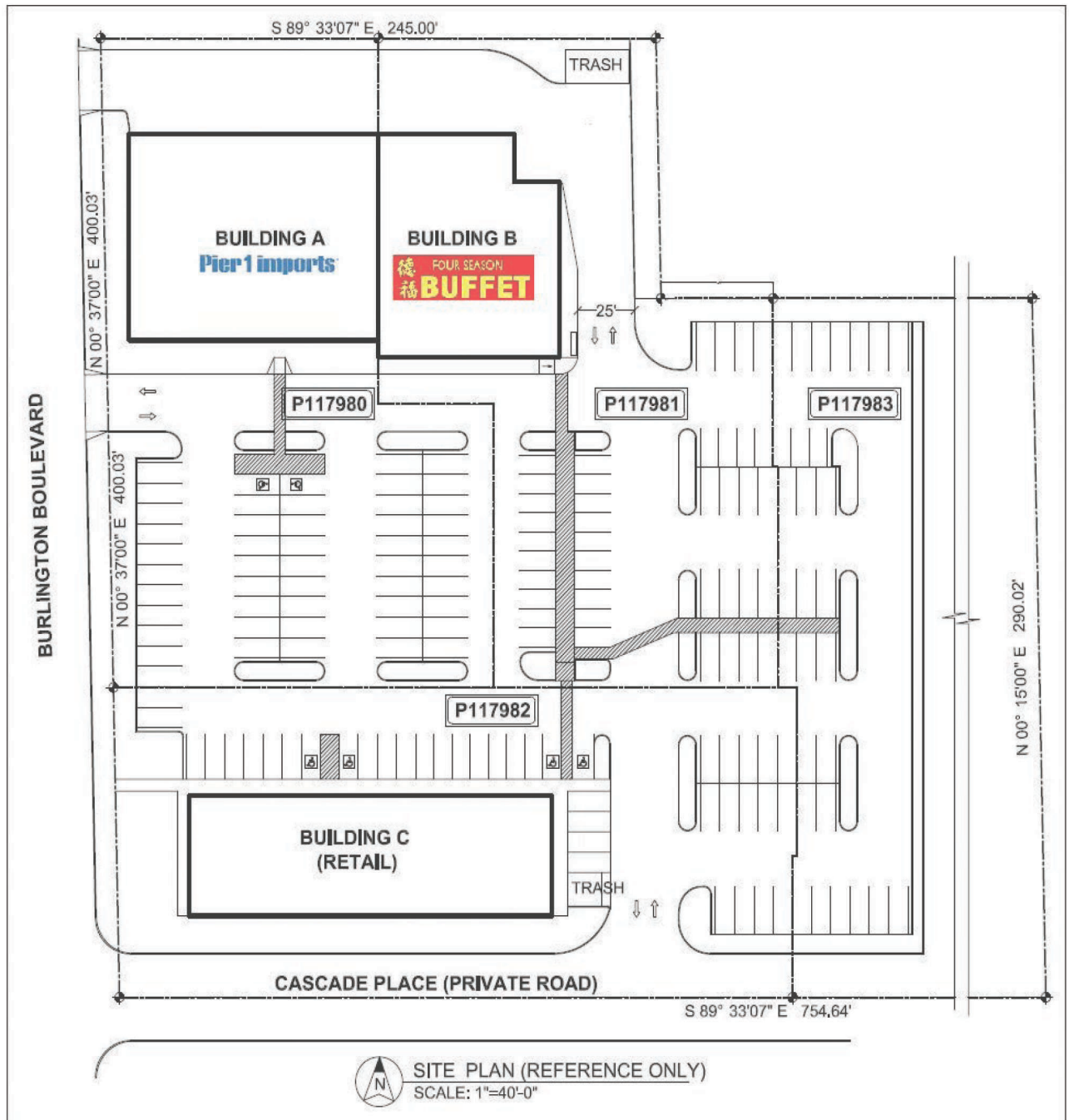


**RAMALEY** PROPERTIES, INC.

Mark Ramaley • P: 360-629-9300 • C: 206-818-2707 • [mark@ramaleyproperties.com](mailto:mark@ramaleyproperties.com)

# Former Pier 1

## SITE PLAN

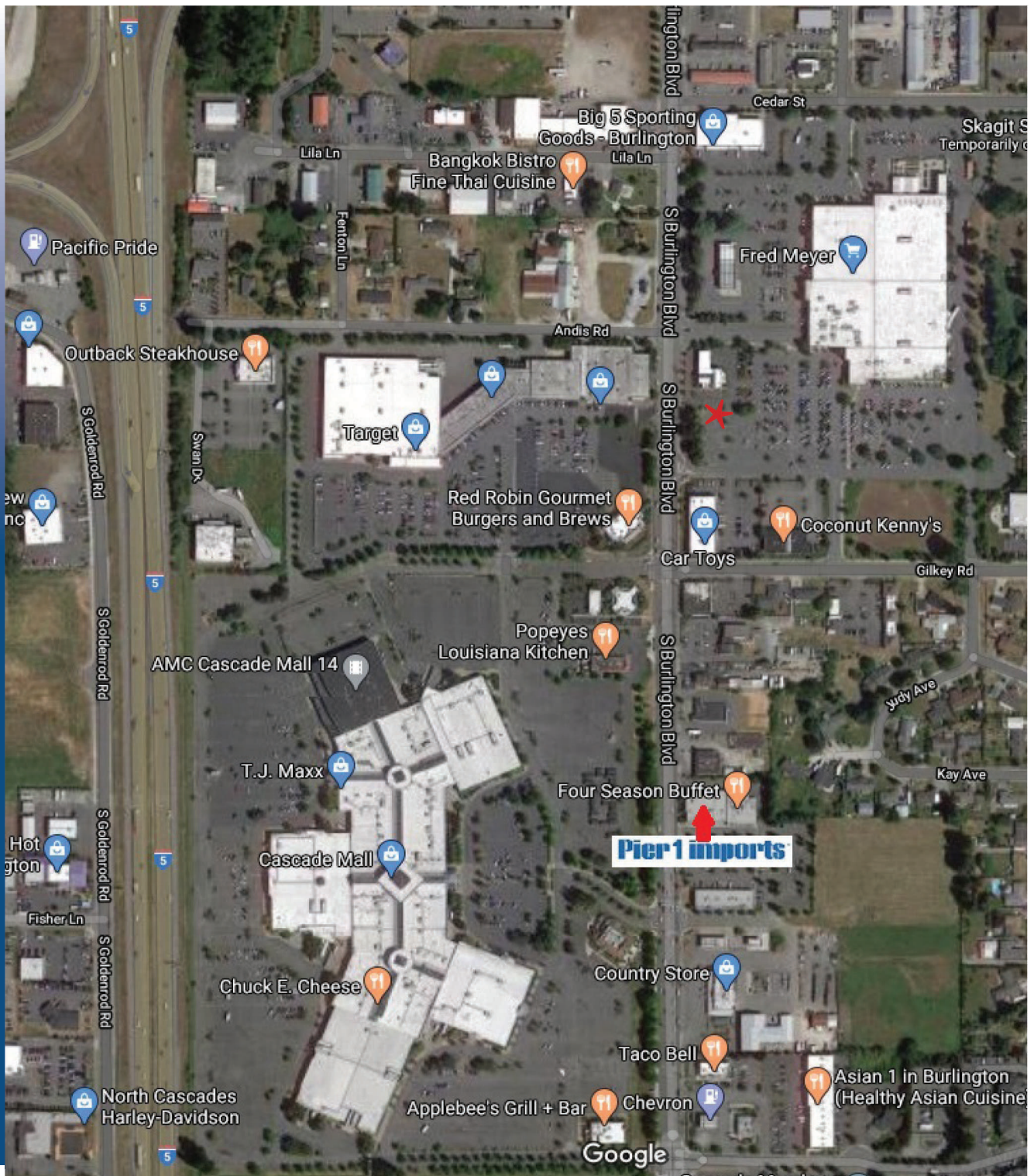


**RAMALEY** PROPERTIES, INC.

Mark Ramaley • P: 360-629-9300 • C: 206-818-2707 • [mark@ramaleyproperties.com](mailto:mark@ramaleyproperties.com)

# Former Pier 1

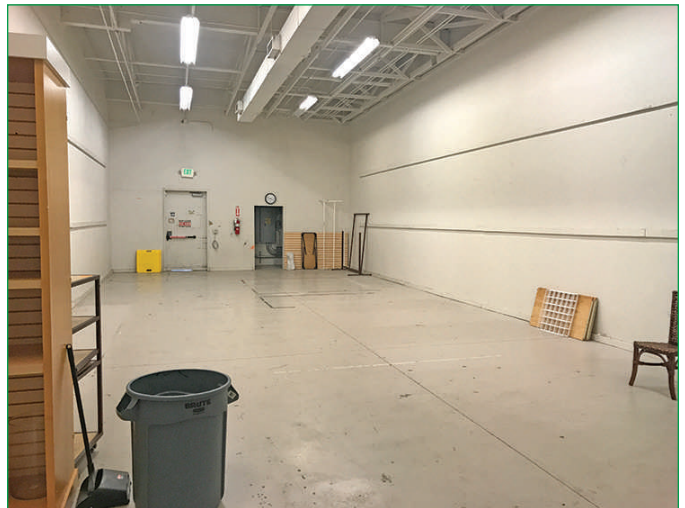
## AERIAL



**RAMALEY** PROPERTIES, INC.

Mark Ramaley • P: 360-629-9300 • C: 206-818-2707 • [mark@ramaleyproperties.com](mailto:mark@ramaleyproperties.com)

# Former Pier 1 PHOTOS



**RAMALEY** PROPERTIES, INC.

Mark Ramaley • P: 360-629-9300 • C: 206-818-2707 • [mark@ramaleyproperties.com](mailto:mark@ramaleyproperties.com)