

# RETAIL FOR LEASE

4205 Stone Way N, Seattle, WA 98103



For more information please contact:

LAURA MILLER

[laura@gibraltarus.com](mailto:laura@gibraltarus.com)

206.351.3573



4205 STONE WAY N, SEATTLE, WA 98103

## RETAIL FOR LEASE



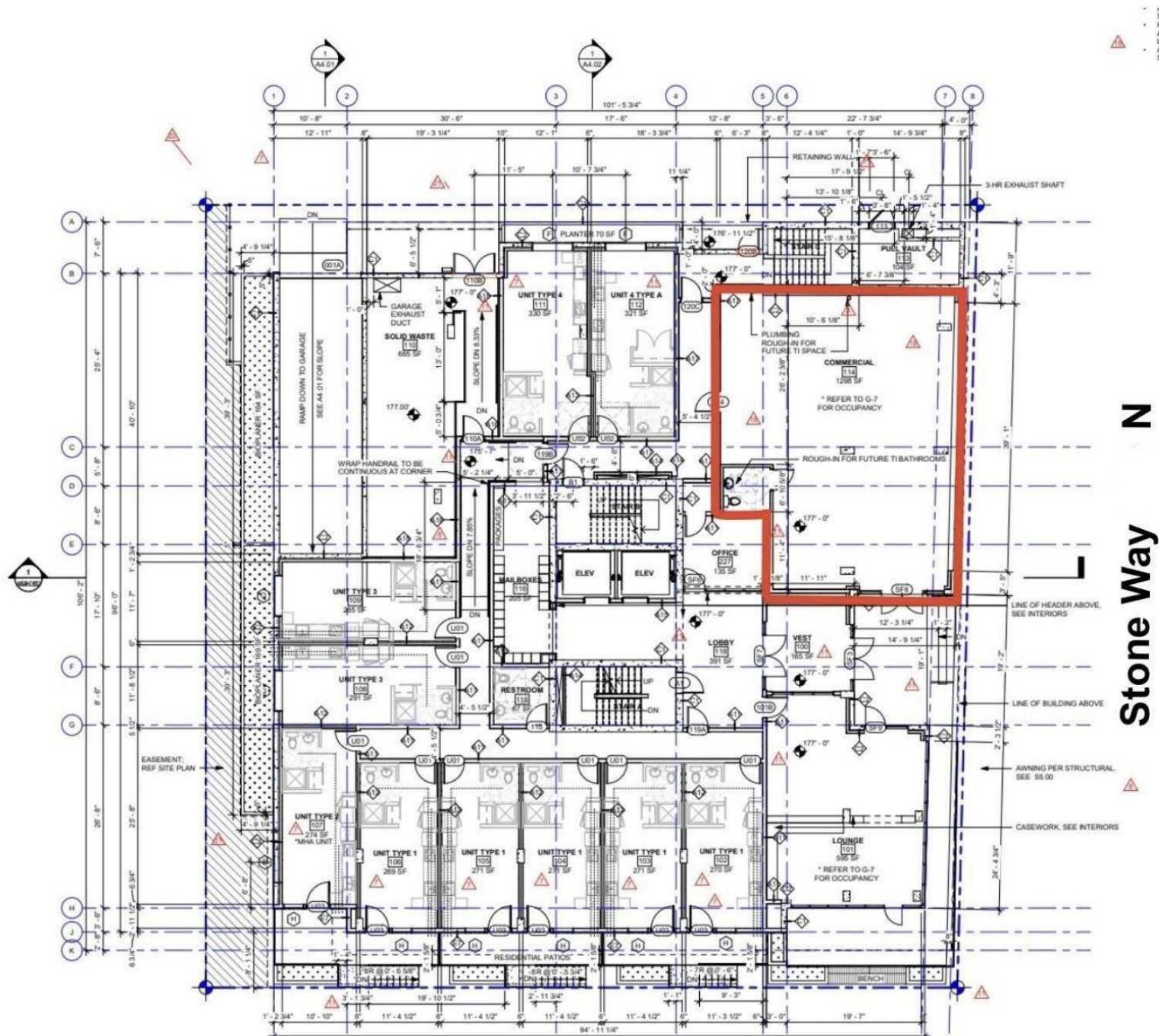
## THE NEIGHBORHOOD

Freewheeling and fun, the Fremont neighborhood offers funky finds for all ages and lifestyles. Charming cafes, friendly boutiques, and lively music venues gives these neighborhoods perennial flair. A distinct personality shines brightly in Fremont, an artsy, bohemian zone that also happens to be self-proclaimed "Center of the Universe." [www.visitseattle.org](http://www.visitseattle.org)

## PROPERTY HIGHLIGHTS

- Rare street level retail space to lease in the heart of Seattle's bustling Fremont neighborhood.
- Located at the base of a new 5 story, 96 unit Apartment building
- One (1) garage parking stall at Market rate
- Available late summer 2025
- Modern, high ceilings, great natural light, en-suite restroom
- Ideal for Pilates or fitness, retail, health and beauty, cafe.
- 1,300 Sq Ft
- Lease Rate \$35/Sq ft plus 2025 NNN estimated at \$8.00/Sq ft

# RETAIL FOR LEASE



4205 STONE WAY AVE N, SEATTLE, WA 98103

RETAIL FOR LEASE



64

TRANSIT SCORE



92

WALK SCORE



86

BIKE SCORE



312,624

POPULATION



152,118

HOUSEHOLDS



120,391

HOUSEHOLD INCOME

\* Demographic data derived from 2024 ACS - 3 mile raduis US Census

4205 STONE WAY N, SEATTLE, WA 98103

RETAIL FOR LEASE

