

# FOR LEASE

FIRST CLASS CORPORATE, AIRPLANE HANGAR FACILITY

 **Windermere**  
COMMERCIAL / NORTH SOUND

15400 AIRPORT DRIVE, BURLINGTON, WA 982333



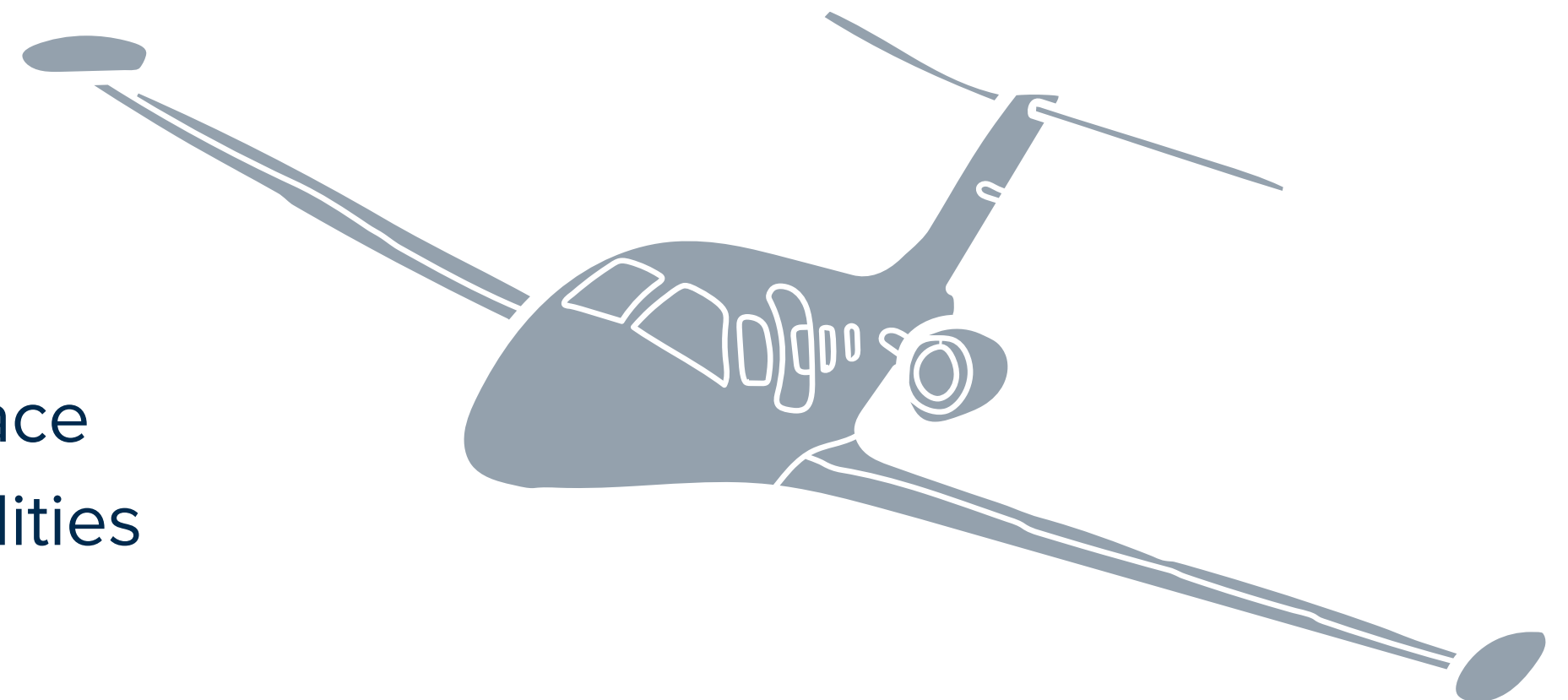
# OFFERING SUMMARY

---

- 14,000 Sq. Ft. of hangar space
- 2,600 Sq. Ft. of office/reception space
- 140' x 30' hangar door
- NNN lease
- Secure and gated facility
- Secure parking garage
- \$2.00 per sqft per month for hangar space
- ½ or ¼ share of lobby, car garage & facilities
- \$30.00 per sqft for office space

Windermere Commercial, North Sound is pleased to present for lease a 14,000 Sq. Ft. corporate aircraft hangar in a secured next to new facility located at the Skagit Regional Airport in Burlington, Washington.

Secure and gated facility includes a reception area, office, sitting area with kitchenette, bathroom, garage space, private parking, CCTV and fiber.







## PROPERTY HIGHLIGHTS

- FIRST CLASS HANGAR AND FACILITY
- OFFICE SPACE WITH FULL AMMENITIES
- GATED AND SECURED
- 24 HOUR ACCESS AVAILABLE
- PRIVATE PARKING GARAGE
- 30' X 140' HANGAR DOORS
- UNDERFLOOR HEATING & POLISHED CONCRETE FLOORS IN HANGAR
- TWO ASPHALT RUNWAYS  
LONGEST: 5,477 FT.
- 1,500 FT. RUNWAY EXTENSION  
ANNOUNCED
- INSTRUMENT APPROACHES AVAILABLE
- ON-SITE INTERNATIONAL CUSTOMS  
AVAILABLE
- CONSTRUCTION COMPLETED IN 2023
- 16,655 SQ. FT. TOTAL AVAILABLE

LOCATED AT SKAGIT REGIONAL AIRPORT  
A POPULAR ALTERNATIVE TO BOEING FIELD AND PAYNE FIELD





# SKAGIT REGIONAL AIRPORT

SKAGIT REGIONAL AIRPORT IS LOCATED IN BURLINGTON, WA. APPROXIMATELY 3 MILES FROM IT'S MAIN DOWNTOWN.

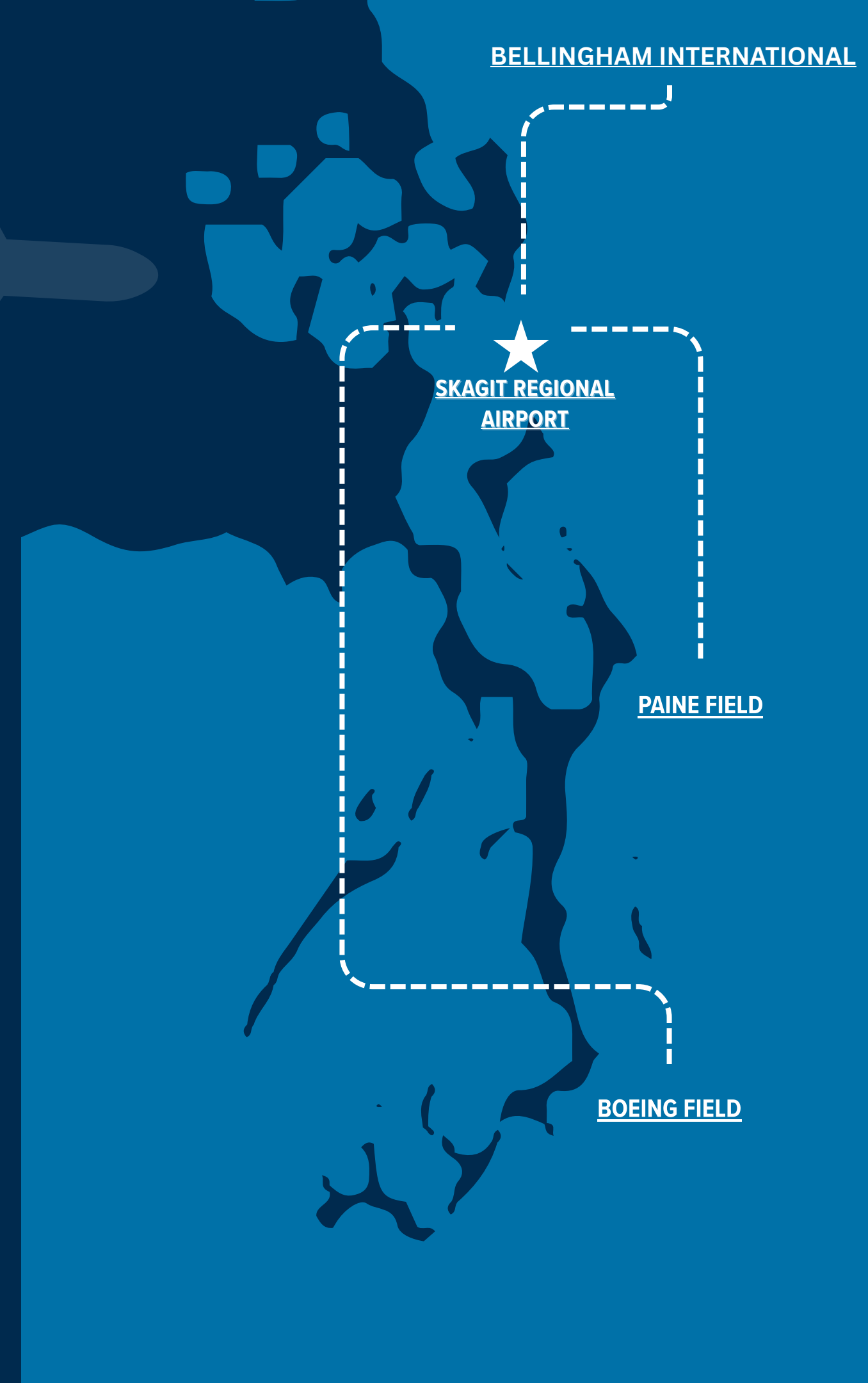
A POPULAR GENERAL AIRPORT IN IT'S OWN RIGHT, SKAGIT REGIONAL AIRPORT IS ALSO A GREAT ALTERNATIVE TO PAINE FIELD AND BOEING FIELD.

## FLIGHT TIMES APPROXIMATELY

5 MINUTES TO BELLINGHAM INTERNATIONAL

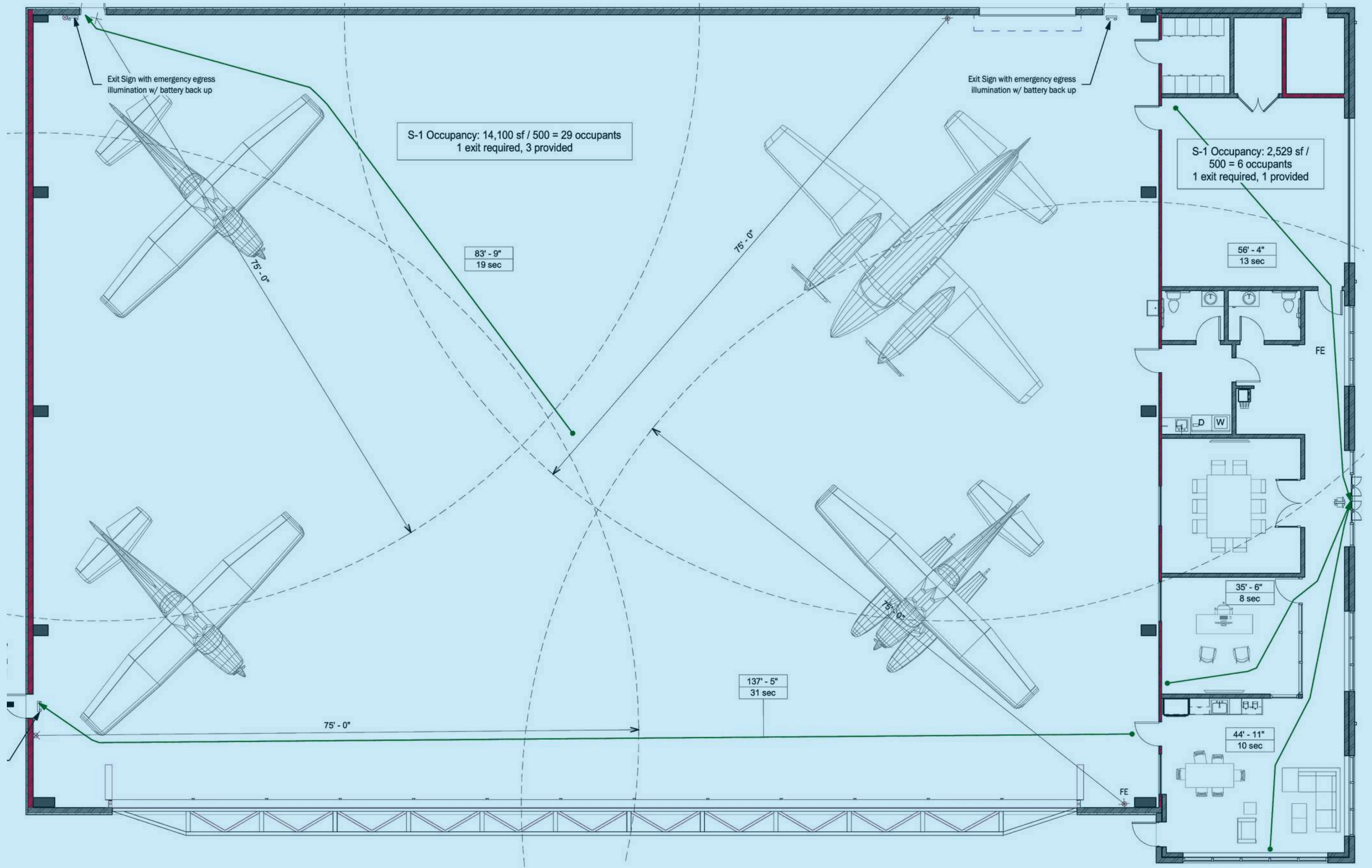
5 MINUTES TO PAINE FIELD

10 MINUTES TO BOEING FIELD





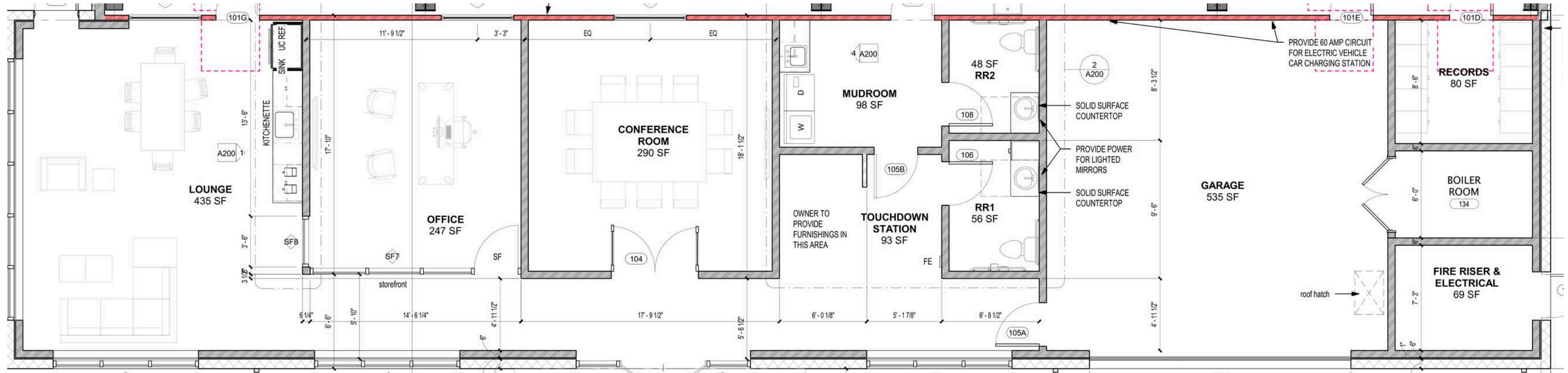
# AIRPLANE HANGAR FLOOR PLANS







# OFFICE FLOOR PLANS





# PHOTO GALLERY







PHOTO GALLERY

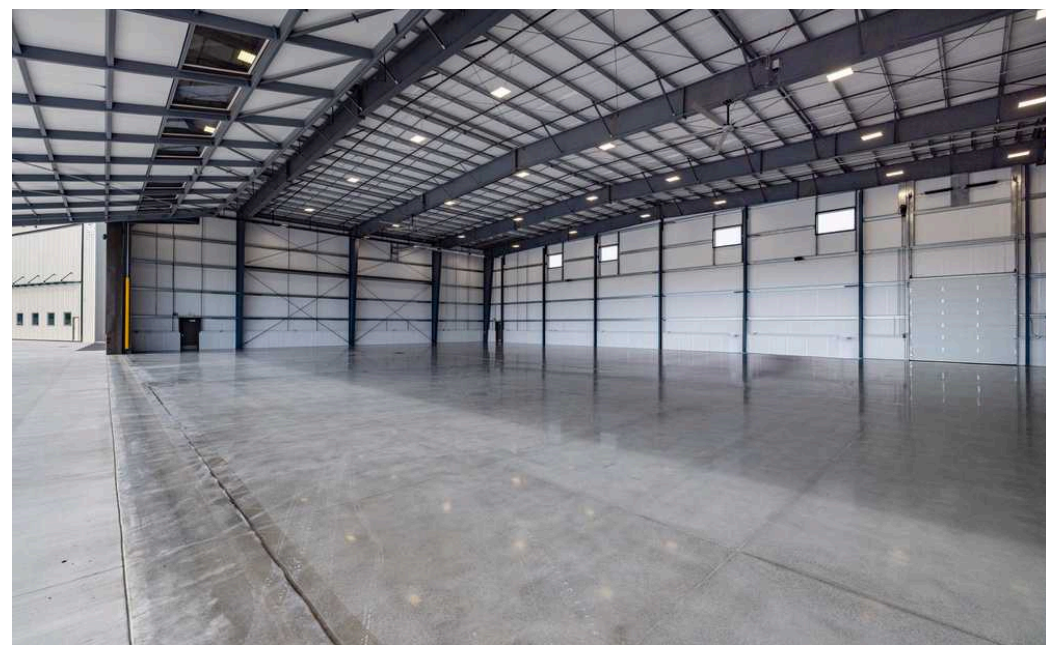
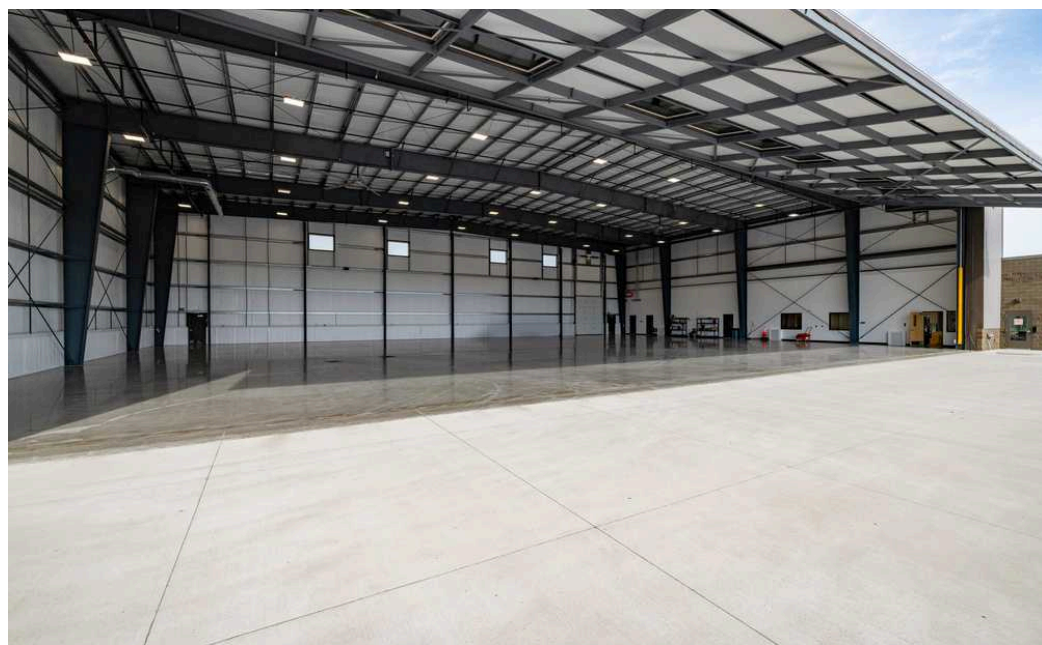






PHOTO GALLERY

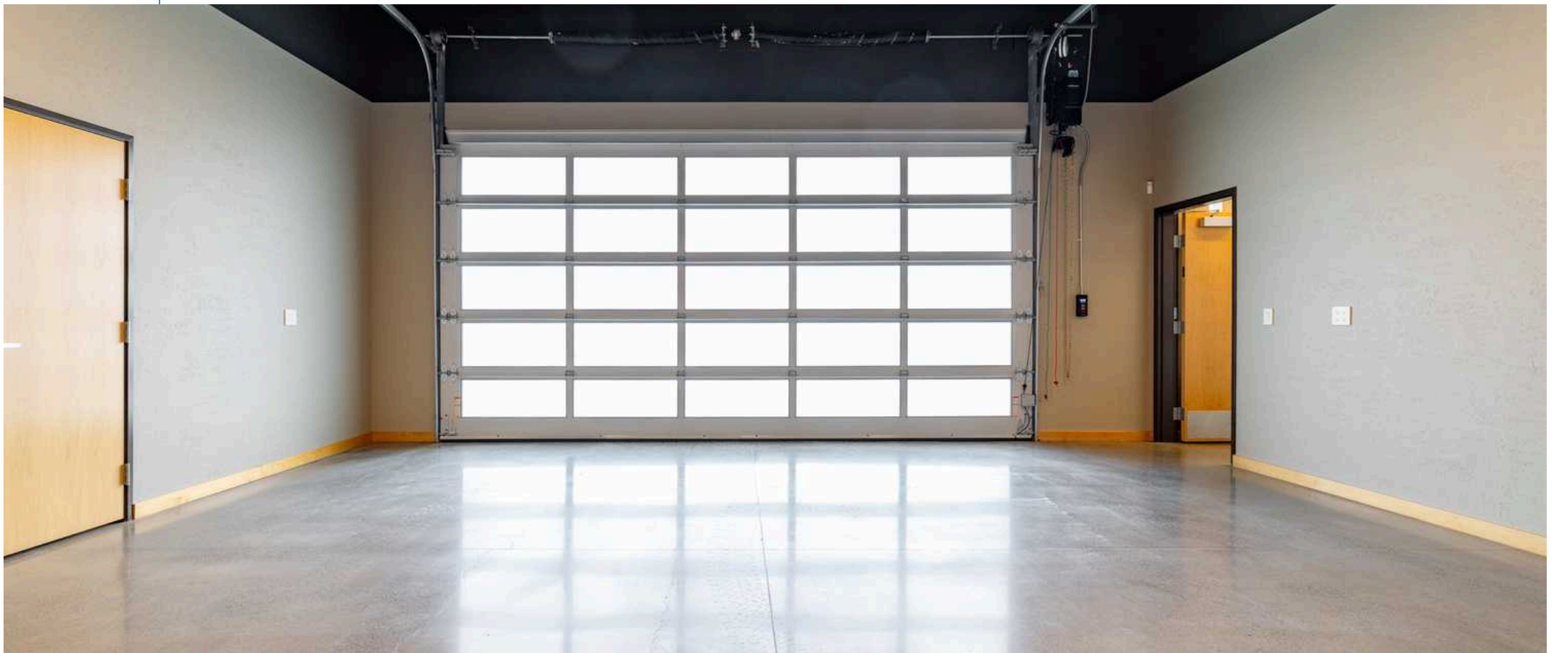
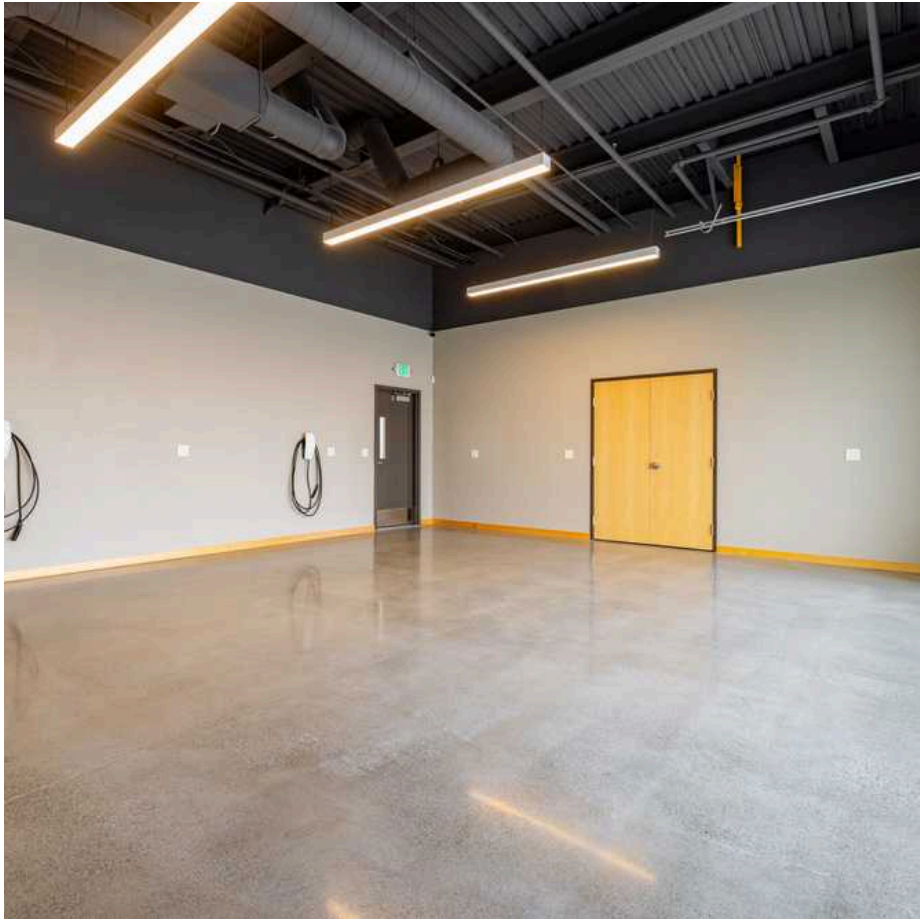
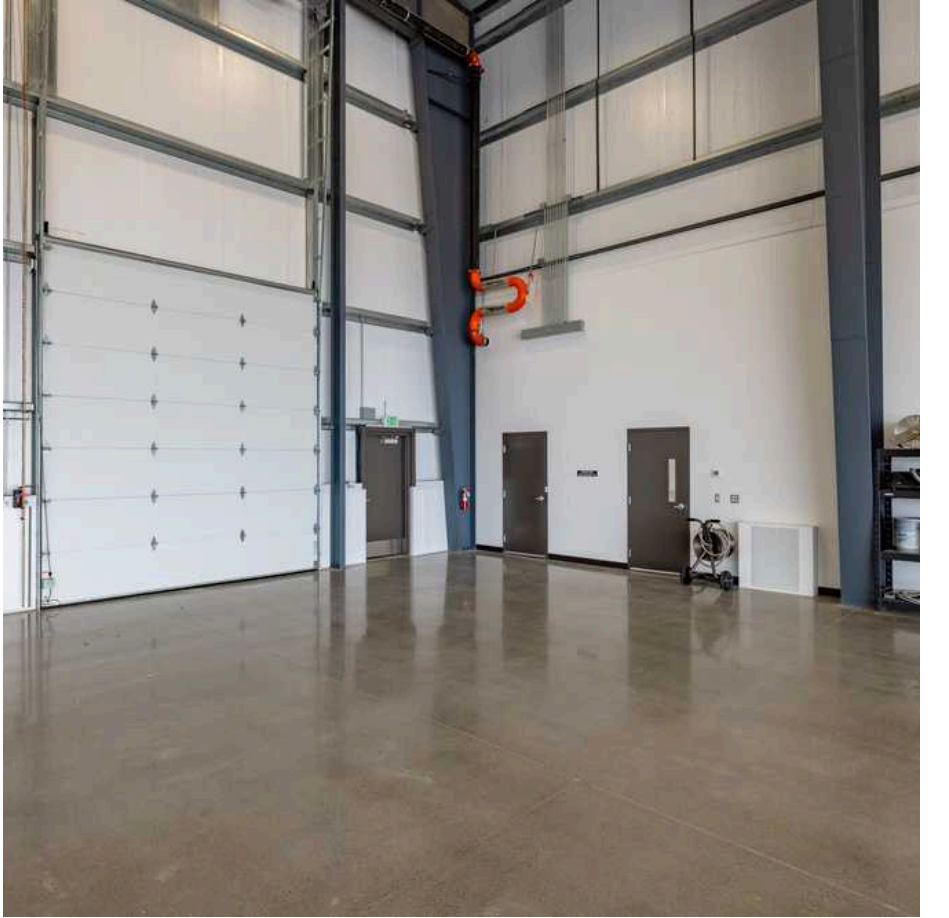






PHOTO GALLERY

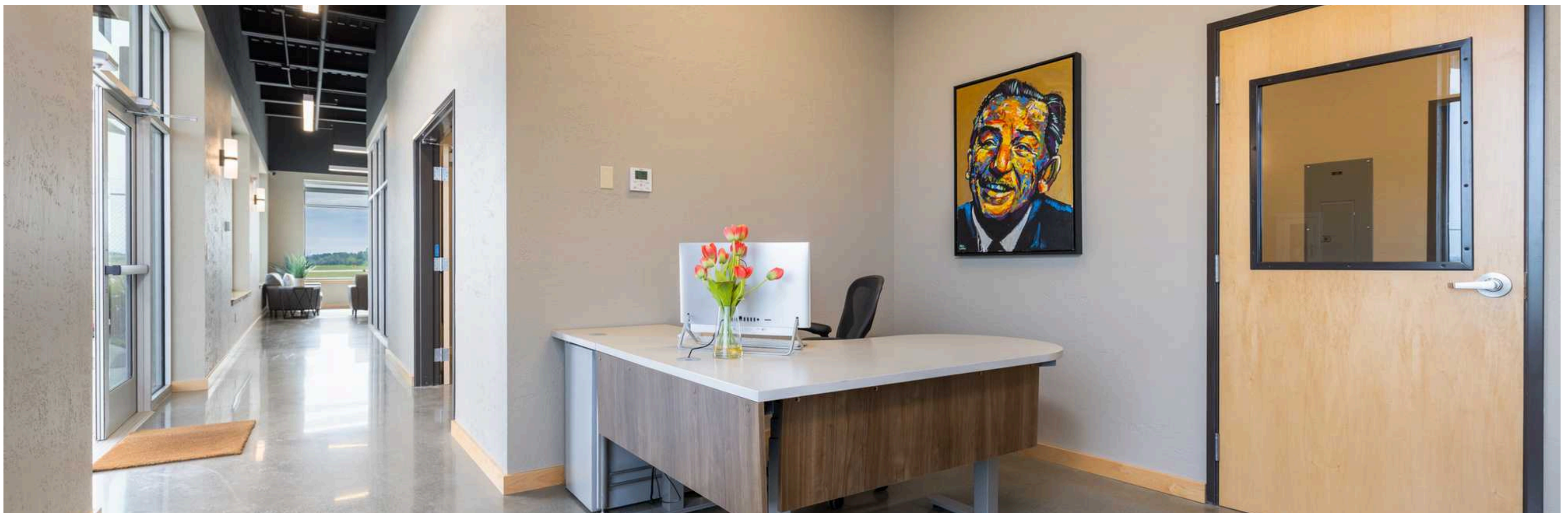






PHOTO GALLERY

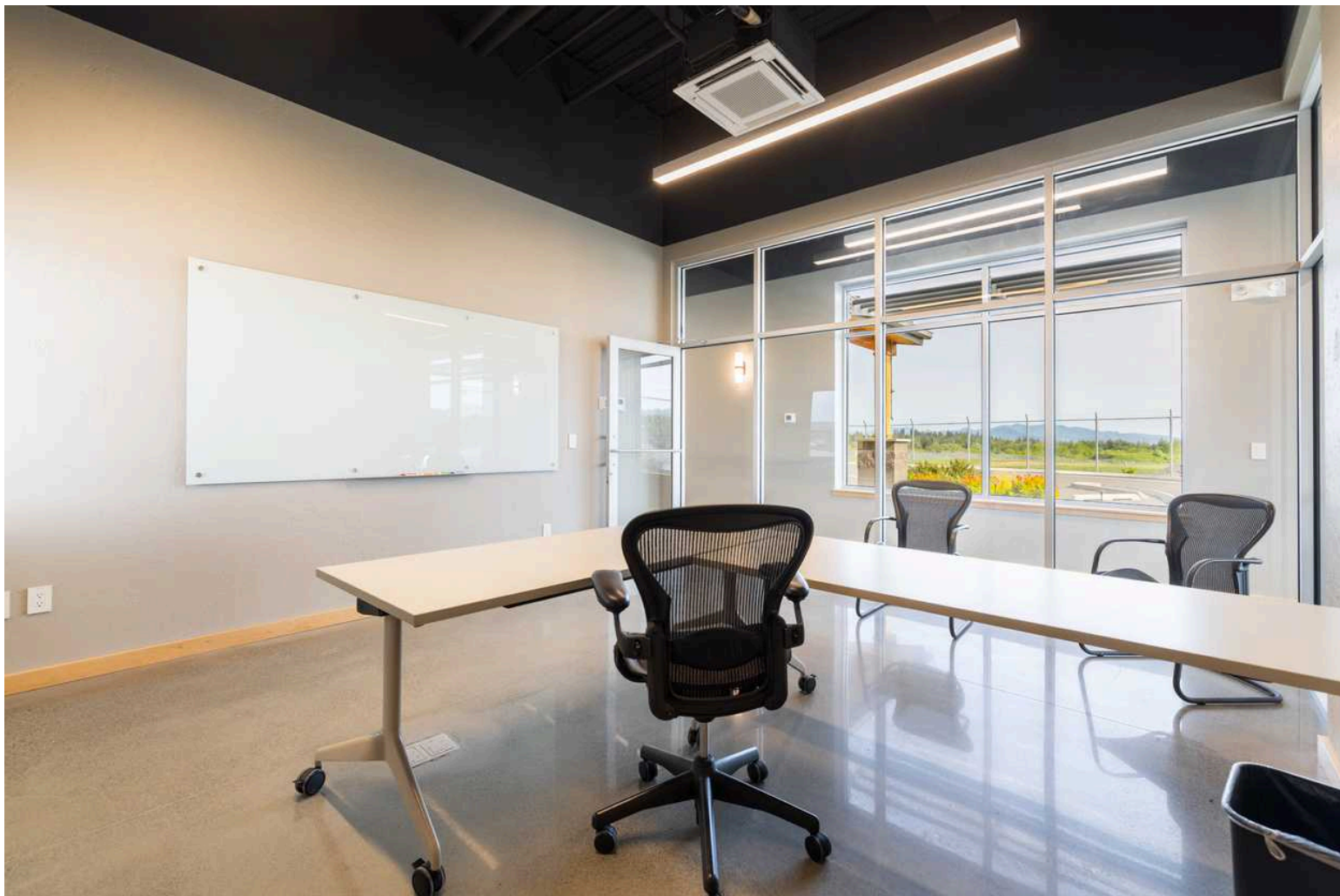
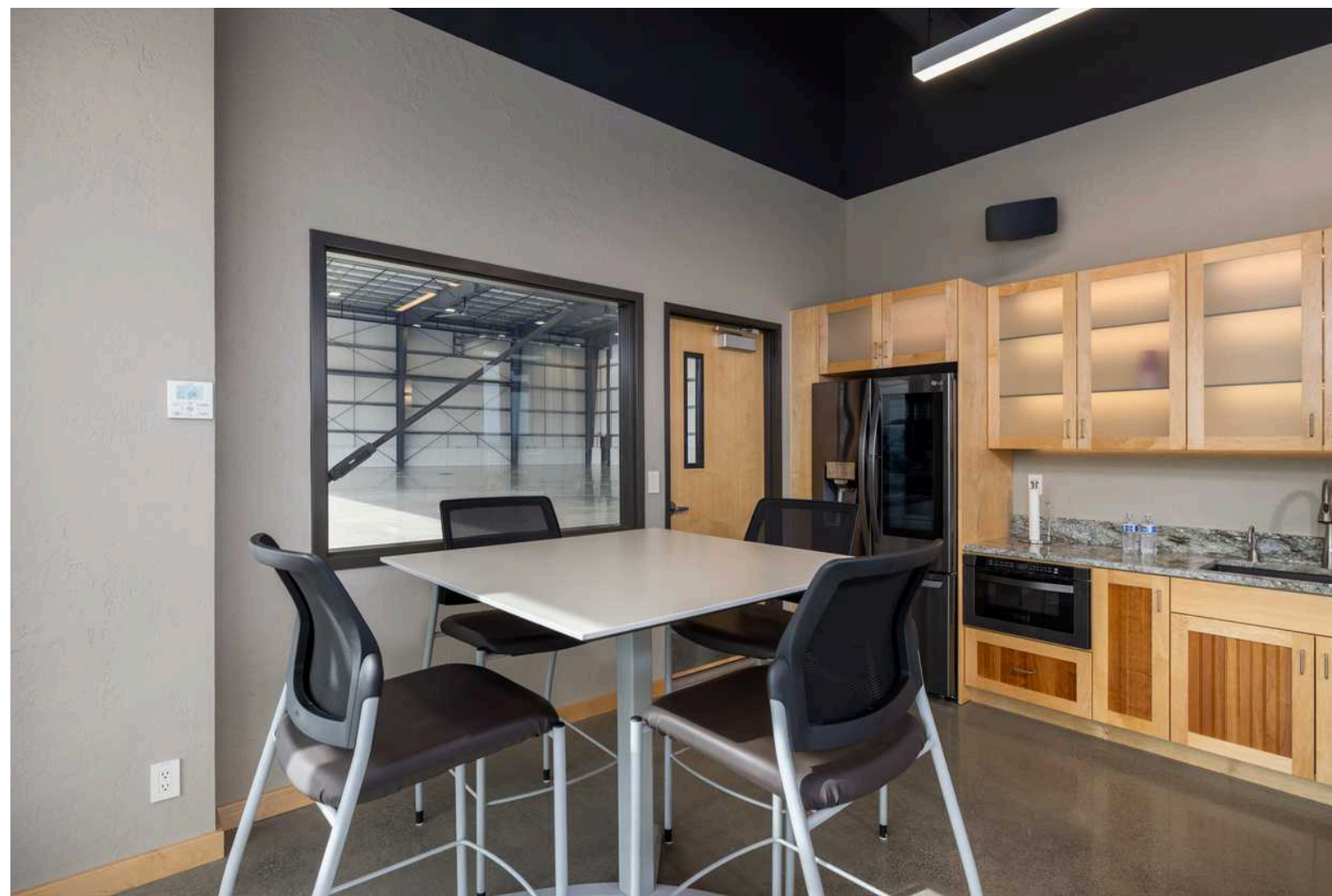
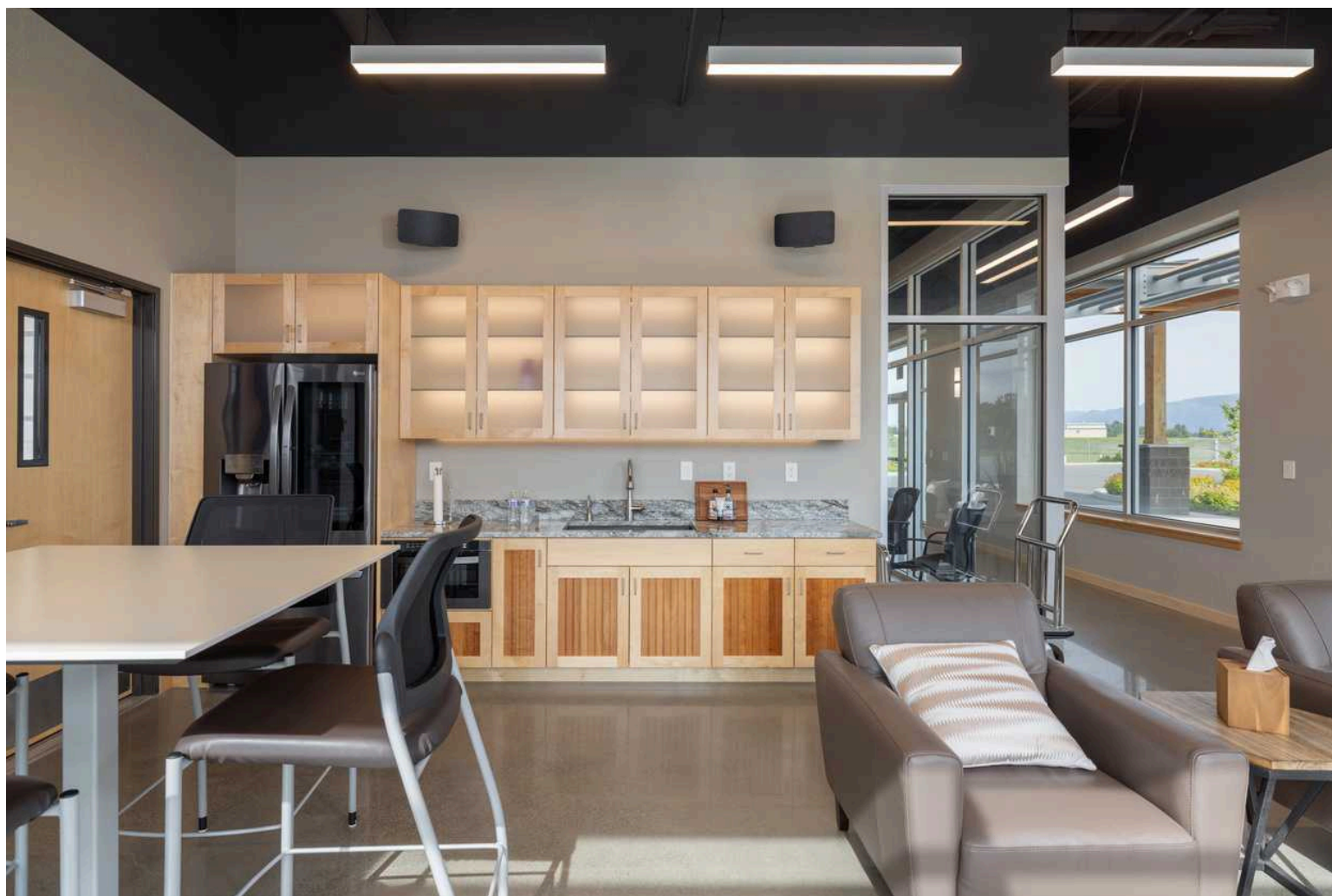






PHOTO GALLERY







## **Nate Scott**

Managing Broker

nscott@windermere.com

360-708-2354



**Windermere**  
COMMERCIAL

WINDERMERE NORTH SOUND

3018 COMMERCIAL AVE • ANACORTES, WA

**SkagitCountyCommercial.com**