



TS
The Power of Your Smile

bbsef

For Lease

1675 W. Hill Road
Boise, Idaho

Michelle Torres Ogden
208 514 7121
michelle.ogden@colliers.com

Devin Ogden, MBA, CCIM, SIOR
208 472 1668
devin.ogden@colliers.com

Property Overview

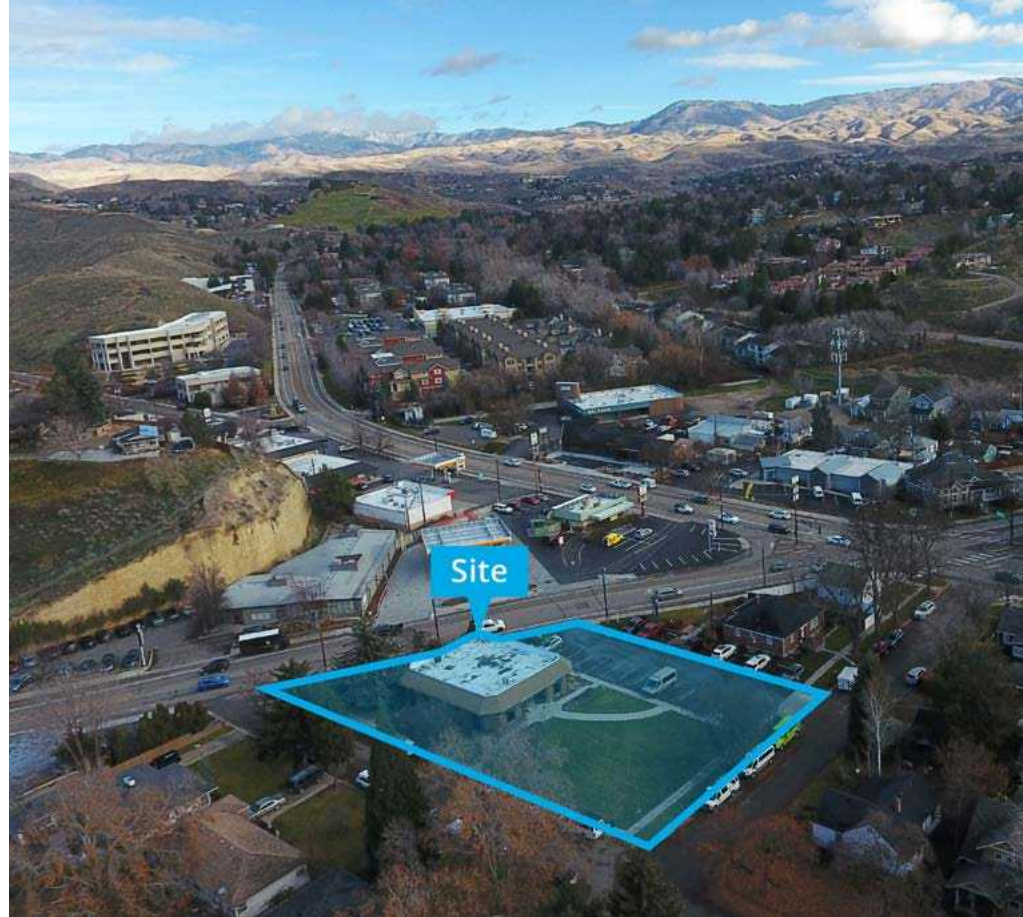
Entire lower level 2,950 SF office space at the corner of Hill Road and 16th

Property Type	Office
Available Suite Size	1,300 SF - 2,950 SF
Zoning	R-3HD
Property Access	On Lock Box

Space Available

Suite	Size	Rate
A & B	1,300 SF - 2,950 SF	\$10.00 PSF

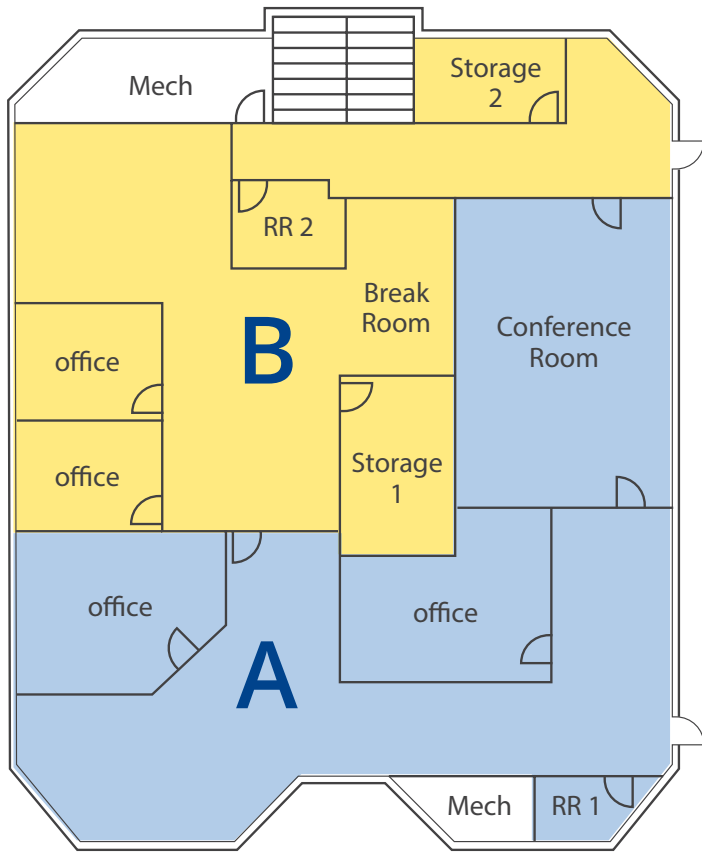
Lease Type	NNN (Estimated at \$3.25/SF Annually)
------------	---------------------------------------



Key Highlights

- Rare North End office opportunity
- Close proximity to Downtown Boise and Bogus Basin
- Can be demised
- Great windows on west side of building for private offices
- Monument signage on Hill Road

Floor Plans



Suite A
1,650 SF

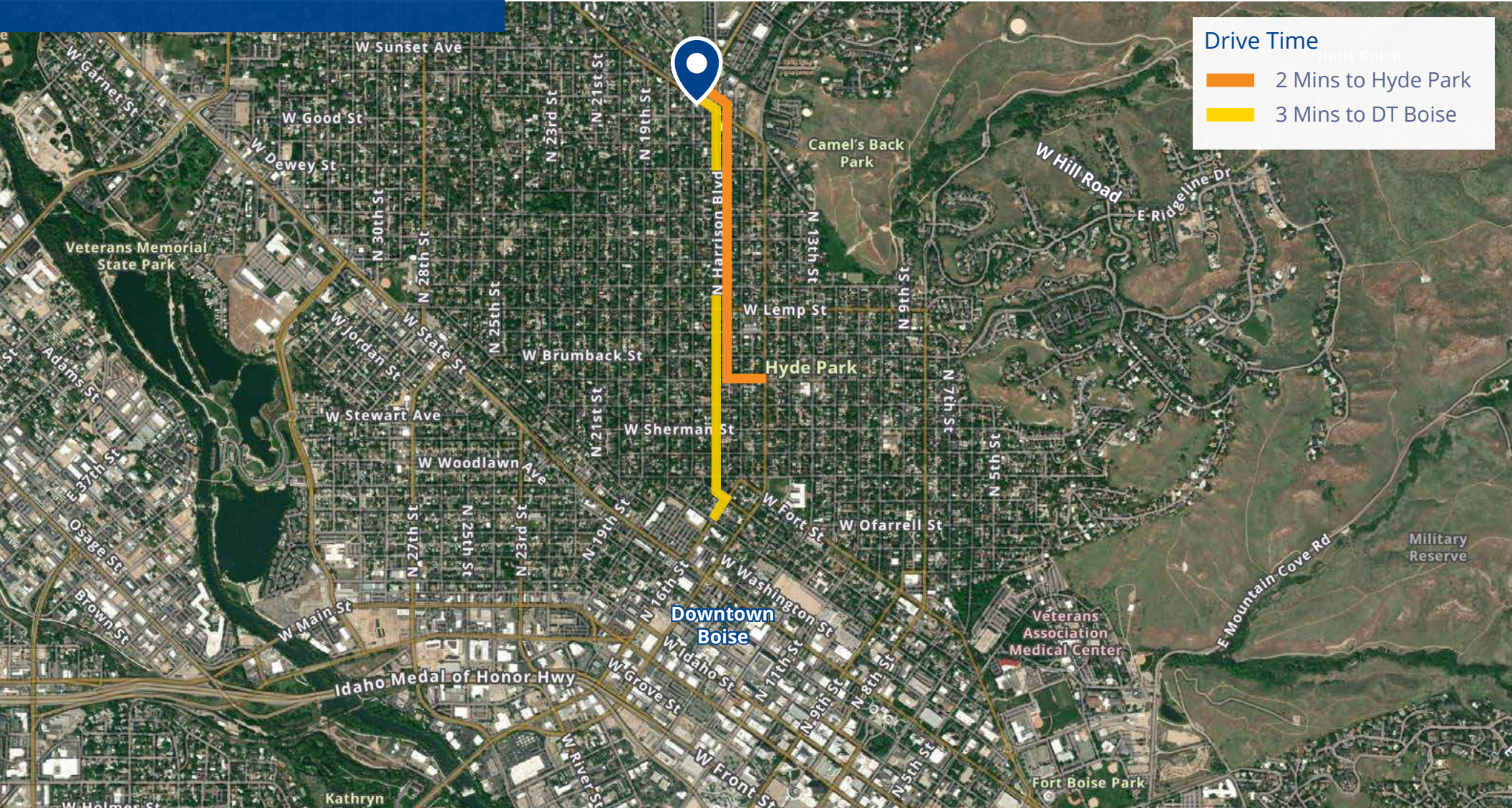
Suite B
1,300 SF



Location

 Google Map

 Street View



Drive Time

-  2 Mins to Hyde Park
-  3 Mins to DT Boise



755 West Front Street, Suite 300
Boise, Idaho 83702
208 345 9000
colliers.com/idaho

This document has been prepared by Colliers for advertising and general information only. Colliers makes no guarantees, representations or warranties of any kind, expressed or implied, regarding the information including, but not limited to, warranties of content, accuracy and reliability. Any interested party should undertake their own inquiries as to the accuracy of the information. Colliers excludes unequivocally all inferred or implied terms, conditions and warranties arising out of this document and excludes all liability for loss and damages arising there from. This publication is the copyrighted property of Colliers and/or its licensor(s). © 2024. All rights reserved. This communication is not intended to cause or induce breach of an existing listing agreement. Colliers Paragon, LLC.