

# MAIN ST RETAIL/OFFICE LOCATION

2016 Main St, Ferndale WA 98248



- HIGHLY VISIBLE MAIN ST. LOCATION
- HIGH PEDESTRIAN EXPOSURE
- LARGE STOREFRONT WINDOWS OFFER NATURAL LIGHT
- FLEXIBLE SPACE CONFIGURATION

**FOR LEASE**  
**\$1,813/ Month + \$700 NNN**  
**(\$5.80/ SF/ Yr.)**  
**(Rate for Combined Suites)**

# PROPERTY SUMMARY

Exceptional leasing opportunity featuring two interconnected storefronts totaling 1,450 square feet in the bustling heart of town. This prime commercial space offers outstanding street visibility and consistent pedestrian traffic, making it perfectly suited for retail operations, professional offices, coffee shops, wellness services, or creative studios.

## Space Configuration:

- Side A: 650 square feet
- Side B: 800 square feet
- Total: 1,450 square feet

**Key Features:** Flexible dual-entrance layout provides operational versatility while maintaining distinct customer access points. Large storefront windows maximize natural light and showcase your business to steady foot traffic. Strategically positioned between established local businesses, this location benefits from an active commercial corridor with convenient access from the main thoroughfare.

**Parking & Accessibility:** Street parking directly in front of the property with additional parking available in nearby lots ensures convenient access for customers and clients.

# PROPERTY OVERVIEW

**Address:** 2016 Main St, Ferndale WA 98248

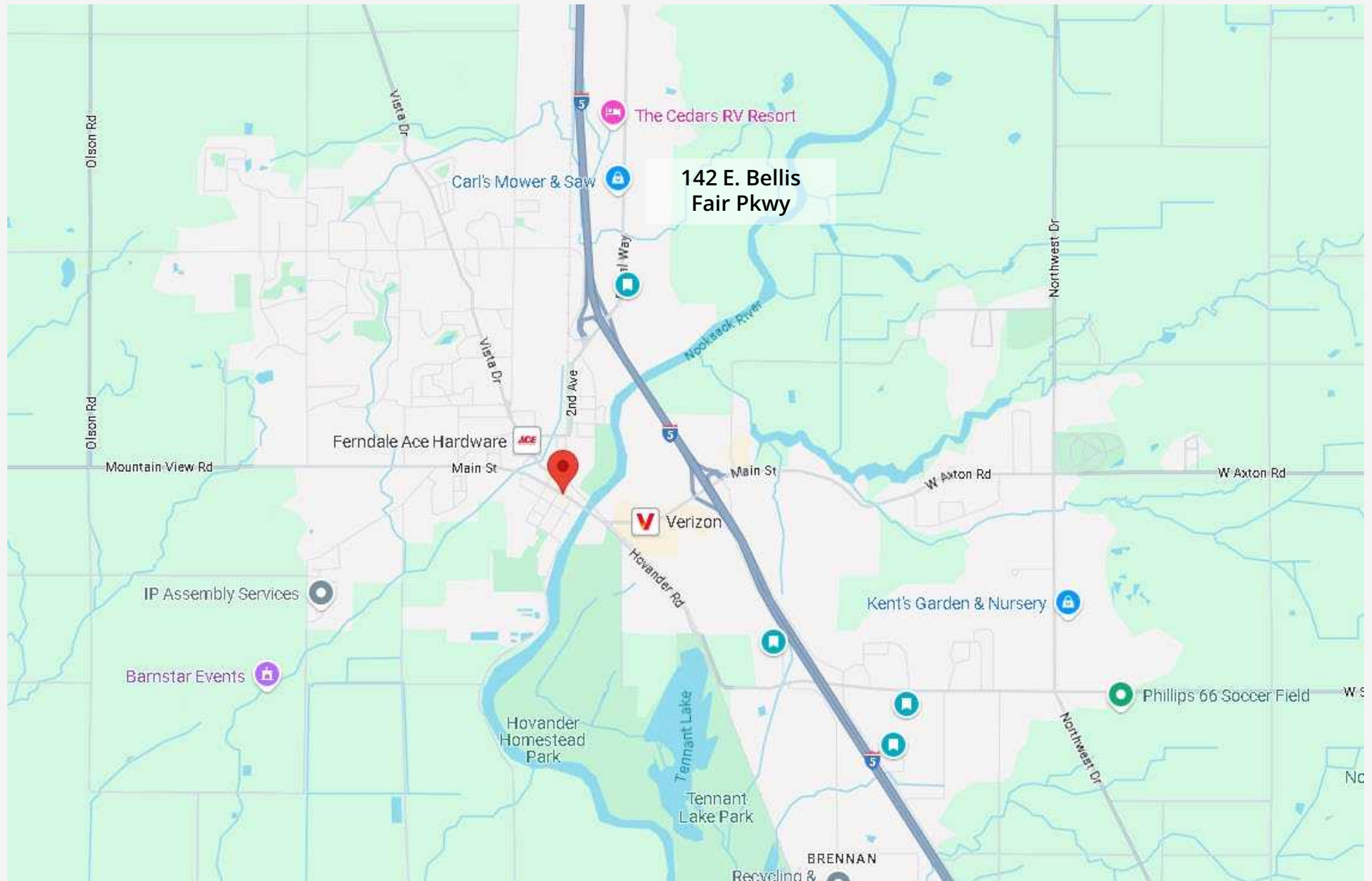
**APN:** 3902291275040000

**Total SF:** 1,450 SF  
Side A: 650 SF  
Side B: 800 SF

**Year Built:** 1915



# MAP



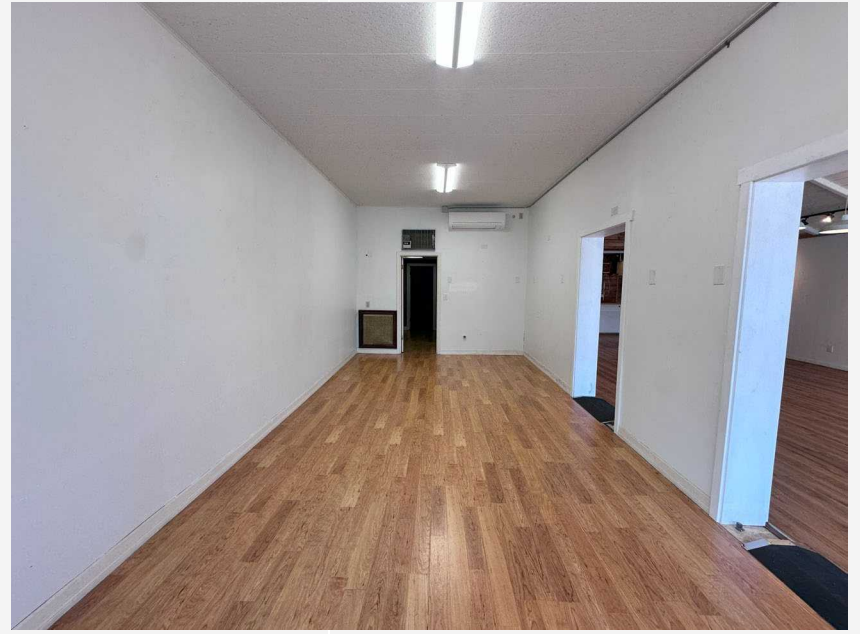


## EXTERIOR PHOTOS





## EXTERIOR PHOTOS





FOR MORE INFORMATION

PLEASE CONTACT:

TRACY CARPENTER

GAGE COMMERCIAL REAL ESTATE, LLC.

BROKER/OWNER

360.303.2608

TRACY@GAGECRE.COM

GREG MARTINEAU, CCIM

GAGE COMMERCIAL REAL ESTATE, LLC.

BROKER/OWNER

360.820.4645

GREG@GAGECRE.COM