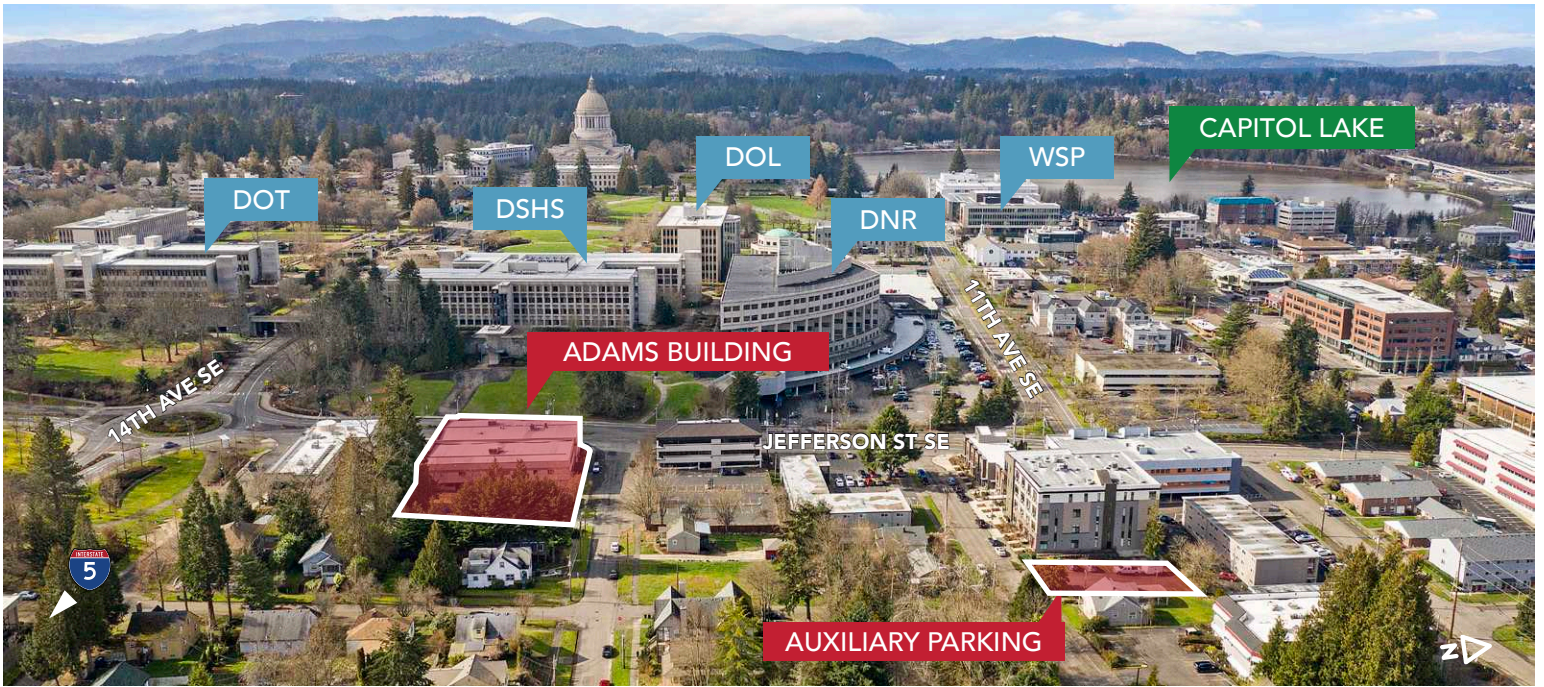




PRIME OFFICE SPACE NEAR WASHINGTON STATE CAPITOL



1310 JEFFERSON ST SE, OLYMPIA, WA | ADAMS BUILDING

LISTING INFORMATION

The Adams Building is very well located on Jefferson Street and within walking distance to all buildings on the State of Washington Capital Campus. The building has covered parking stalls as well as an auxiliary parking lot one block to the north. It has been very well maintained and features an interior layout that can be modified to a user's specific needs

2,713 - 23,715 SF

\$17.00/SF
MODIFIED GROSS

CBA# 42004714



rants.group/AdamsBldgVT



This information, while obtained from sources we deem reliable, is not guaranteed. It is provided without any representation, warranty or guarantee, expressed or implied as to its accuracy. Prospective buyer or tenant should conduct an independent investigation and verification of all matters deemed to be material, including, but not limited to, statements of income and expenses. Consult your attorney, accountant, or other professional advisor.

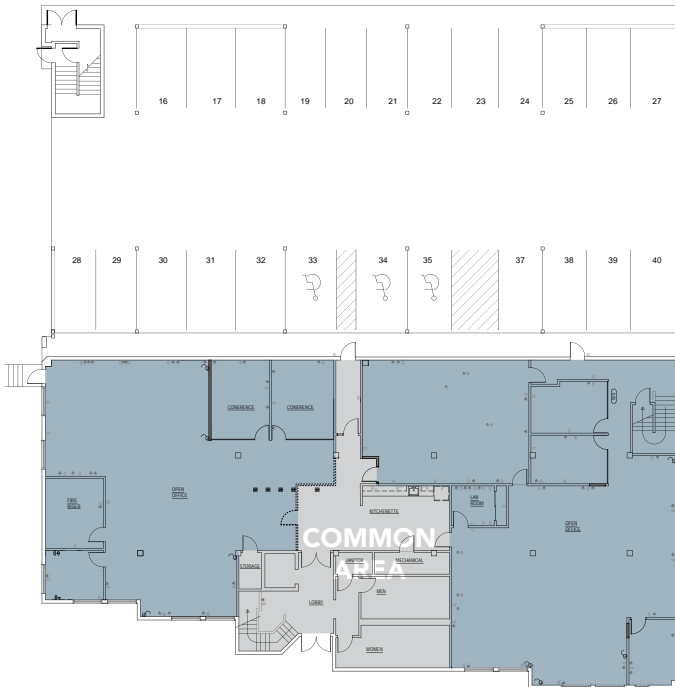
Carolyn Graden, ccim
MANAGING BROKER
(360) 763-4994
carolyn@rantsgroup.com

Logan Rants
BROKER
(360) 943-8076
loganr@rantsgroup.com

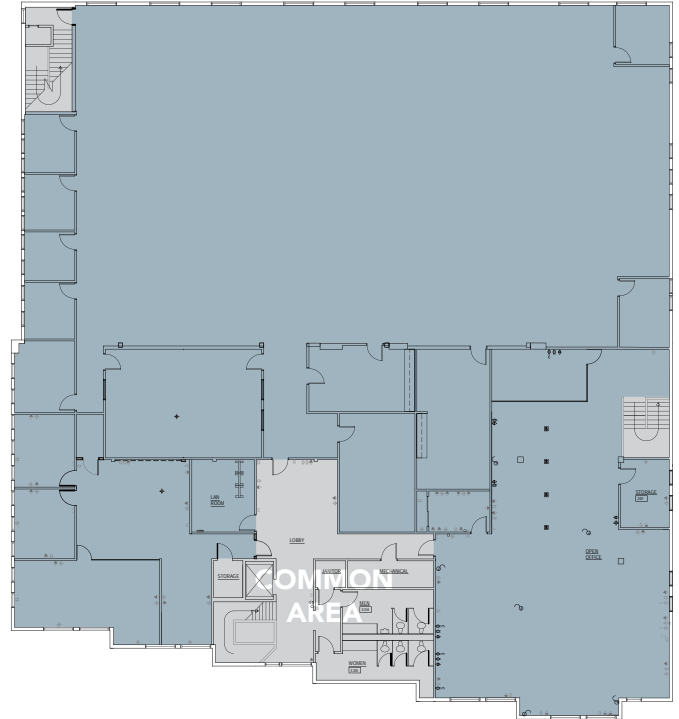
360-943-8060
RANTSGROUP.com

1310 JEFFERSON ST SE, OLYMPIA, WA | ADAMS BUILDING

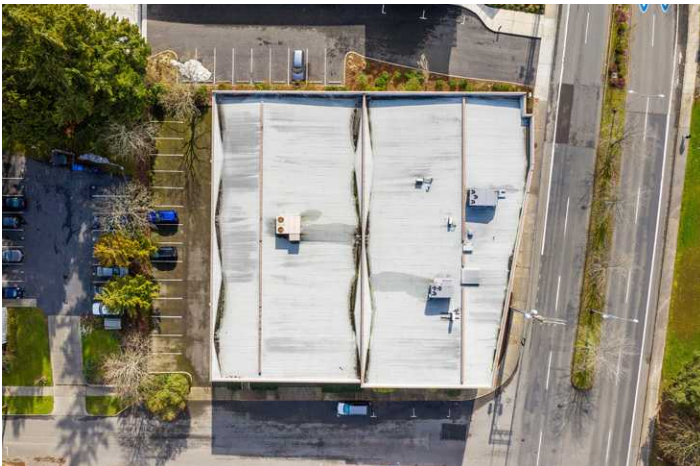
FIRST FLOOR



SECOND FLOOR



THIS FLOORPLAN IS NOT TO SCALE
 SIZES AND DIMENSIONS ARE APPROXIMATE, ACTUAL MAY VARY.



CONTACT

Carolyn Graden, ccim
 MANAGING BROKER
 (360) 763-4994
 carolyn@rantsgroup.com

Logan Rants
 BROKER
 (360) 943-8076
 loganr@rantsgroup.com



rantsgroup.com/AdamsBldgVT

This information, while obtained from sources we deem reliable, is not guaranteed. It is provided without any representation, warranty or guarantee, expressed or implied as to its accuracy. Prospective buyer or tenant should conduct an independent investigation and verification of all matters deemed to be material, including, but not limited to, statements of income and expenses. Consult your attorney, accountant, or other professional advisor.

360-943-8060 | RANTSGROUP.com

1310 JEFFERSON ST SE, OLYMPIA, WA | ADAMS BUILDING



KITCHEN (1ST FLOOR)



WORK AREA (1ST FLOOR)



MEETING ROOM (2ND FLOOR)



EXECUTIVE CONFERENCE ROOM (2ND FLOOR)



CONFERENCE ROOM (2ND FLOOR)



BREAK ROOM (2ND FLOOR)

CONTACT

Carolyn Graden, ccim
MANAGING BROKER
(360) 763-4994
carolyn@rantsgroup.com

Logan Rants
BROKER
(360) 943-8076
logan@rantsgroup.com



rantsgroup.com/AdamsBldgVT

This information, while obtained from sources we deem reliable, is not guaranteed. It is provided without any representation, warranty or guarantee, expressed or implied as to its accuracy. Prospective buyer or tenant should conduct an independent investigation and verification of all matters deemed to be material, including, but not limited to, statements of income and expenses. Consult your attorney, accountant, or other professional advisor.

360-943-8060 | RANTSGROUP.com