

511 BOREN

2,200-6,481 RSF Available



NEWMARK







Tracy Turnure
310.906.7476
tracy.turnure@nmrk.com

Jesse Ottele
206.452.4529
jesse.ottele@nmrk.com

Availabilities

Suite B1	4,071 RSF	Available Now
Suite B2	2,410 RSF	Available Now
Suite B1 + B2	6,481 RSF	Available Now
Suite 301	2,200 RSF	Available Now

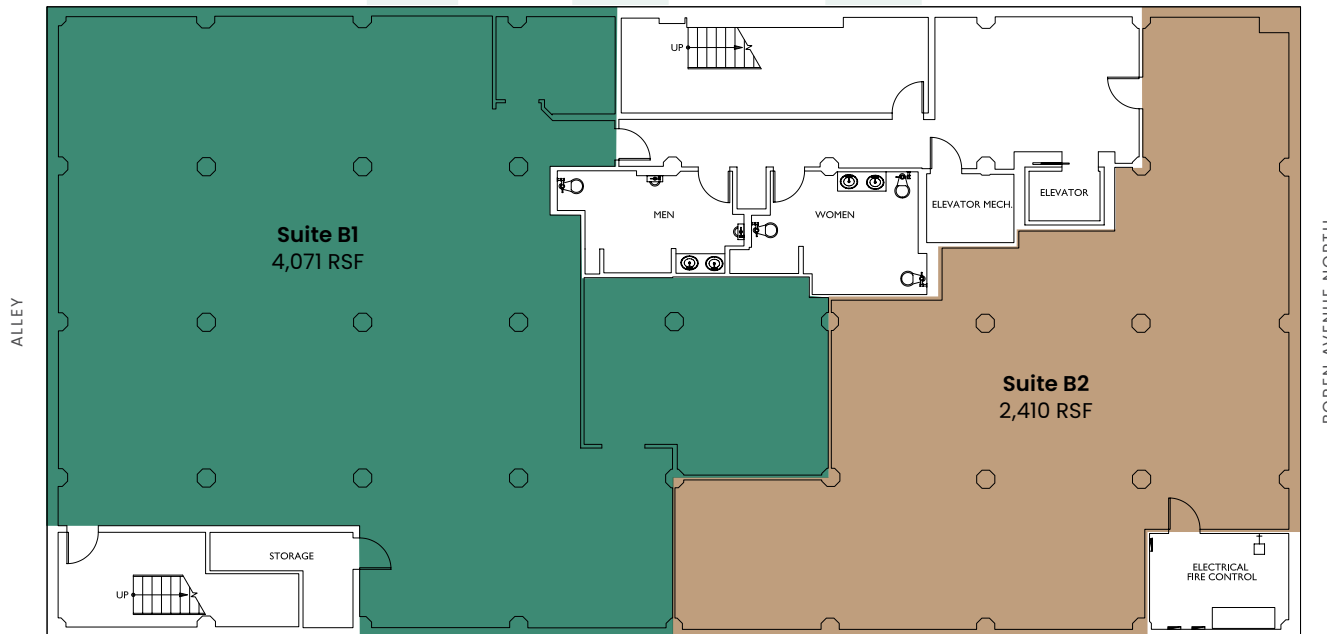
Building Features

-  Unparalleled Freeway access to I-5
-  Bike Storage with Showers/Lockers
-  Dog Friendly
-  Parking available in nearby lots
-  Daily, rotating food trucks located near building
-  Internet Provider - CenturyLink





ADJACENT BUILDING



Suite B1

4,071 RSF
Available Now

Suite B2

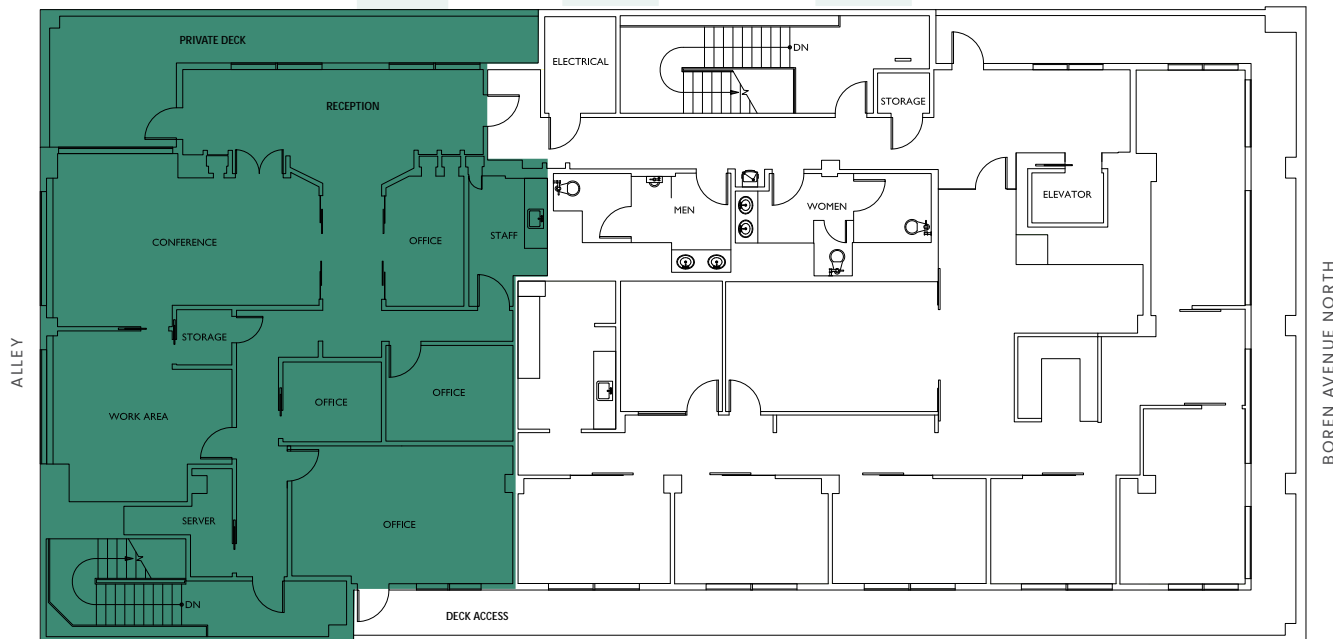
2,410 RSF
Available Now

Suite B1 + B2

6,481 RSF
Available Now

- Current Escape Room Buildout
- Bright Creative Basement Space
- Full Restrooms
- Open to Office, Retail, and Flex uses

511



Suite 301

2,200 RSF
Available Now

- Former Physical Therapy Center
- 3 Large Training and Workout Rooms
- Multiple Private Therapy or Work Rooms
- Configured for 5 private offices with reception and conference room
- Private Outdoor Deck (not included in the RSF)

VIRTUAL TOUR

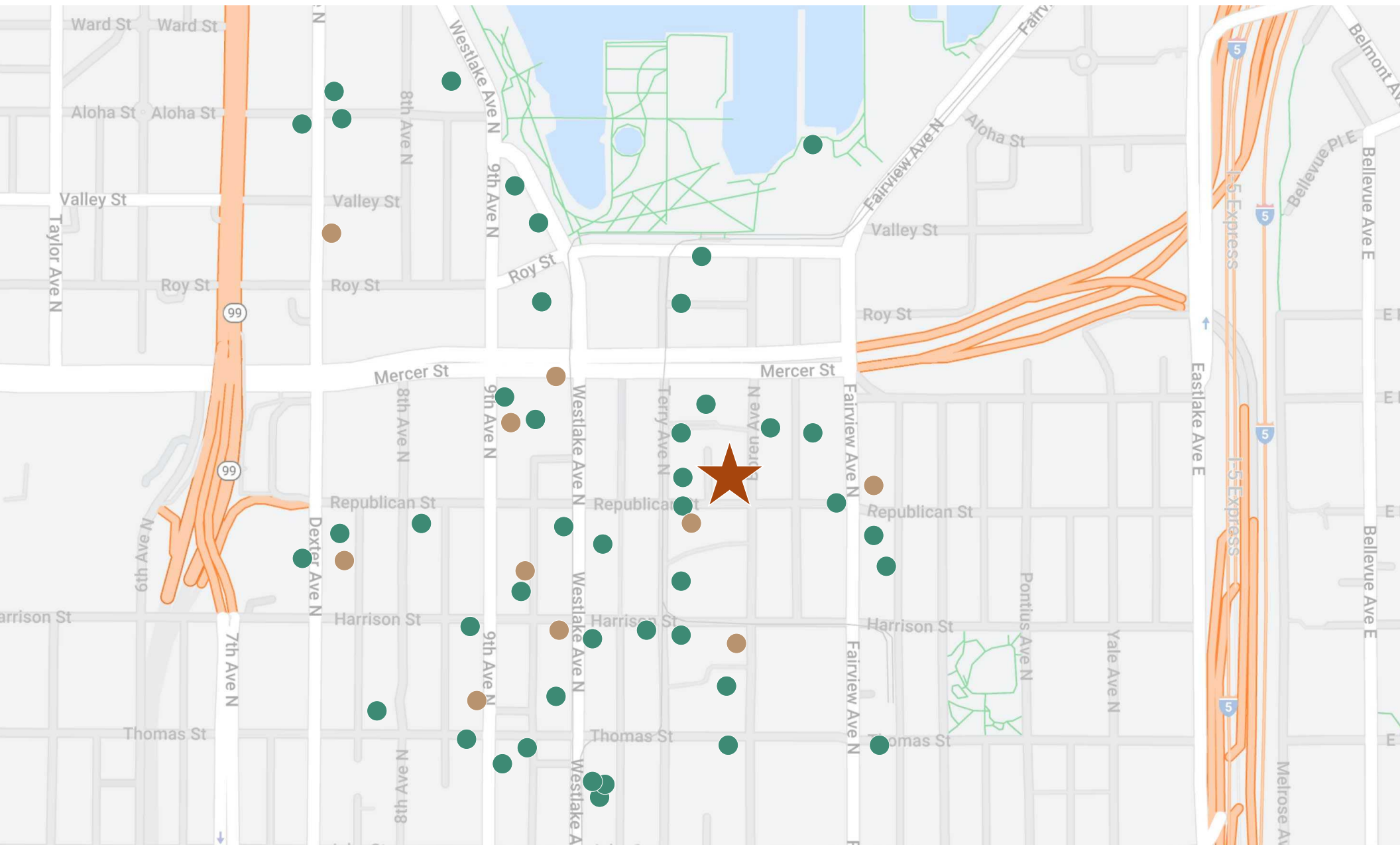
Suite 301 Gallery

VIRTUAL TOUR



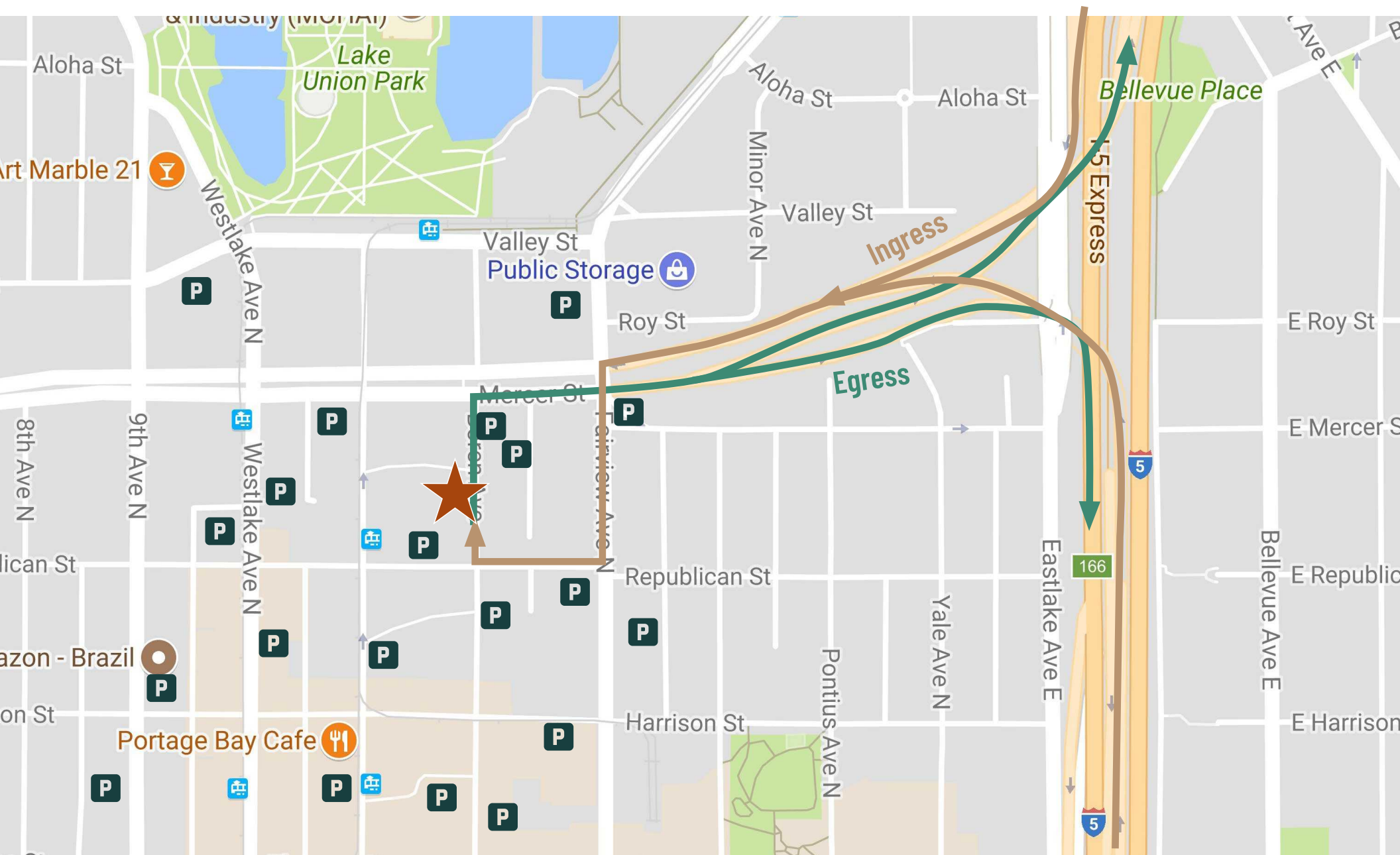
Nearby Amenities

Coffee Food & Drink



Unparalleled Freeway Access

← Ingress → Egress



511 BOREN

FOR MORE INFORMATION CONTACT

Tracy Turnure

310.906.7476

tracy.turnure@nmrk.com

Jesse Ottele

206.452.4529

jesse.ottele@nmrk.com

NEWMARK

The distributor of this communication is performing acts for which a real estate license is required. The information contained herein has been obtained from sources deemed reliable but has not been verified and no guarantee, warranty or representation, either express or implied, is made with respect to such information. Terms of sale or lease and availability are subject to change or withdrawal without notice. 9253761232 6/1/2025