

4,354 SF

BALLARD

SUBLEASE



2227 NW 57TH STREET, SEATTLE, WA 98107

 **Leibsohn
& Company**



ROYCE COTTLE
Senior Vice President
+1 206 999 3483
rcottle@leibsohn.com

OFFICE SUBLEASE
AVAILABLE NOW

LAND **5,000 SF**

BLDG **4,354 GSF**

1 FLOOR **2,041 RSF**

2 FLOOR **2,044 RSF**

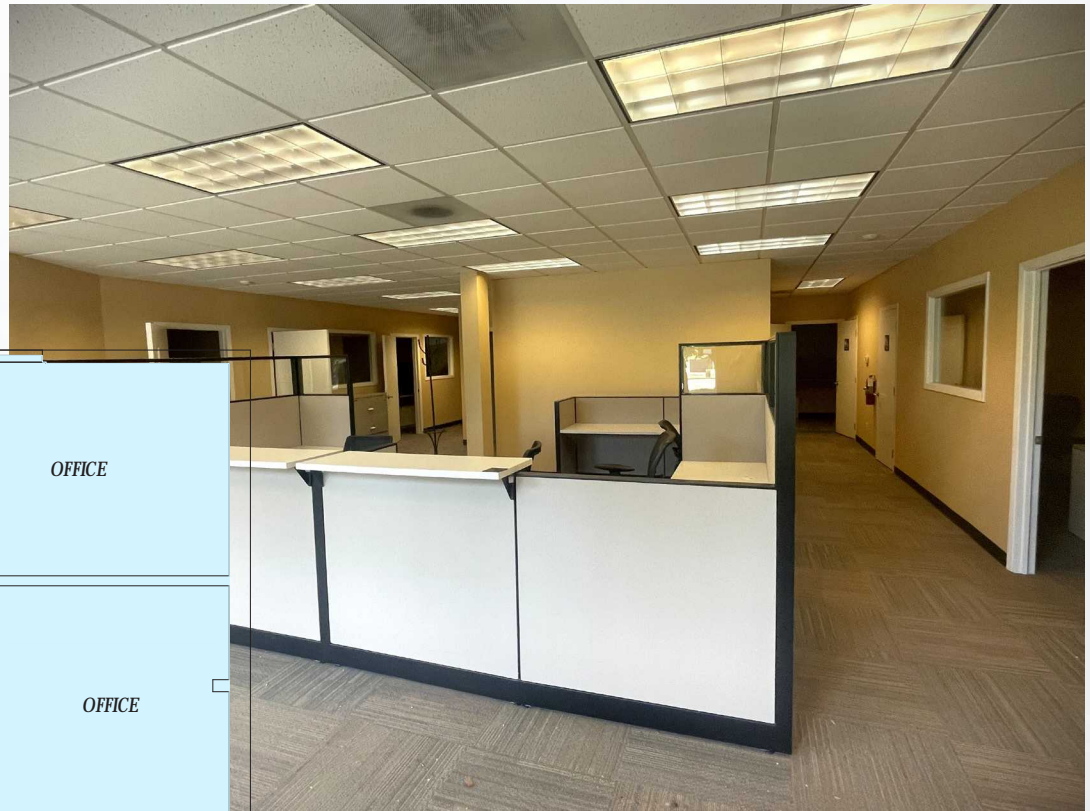
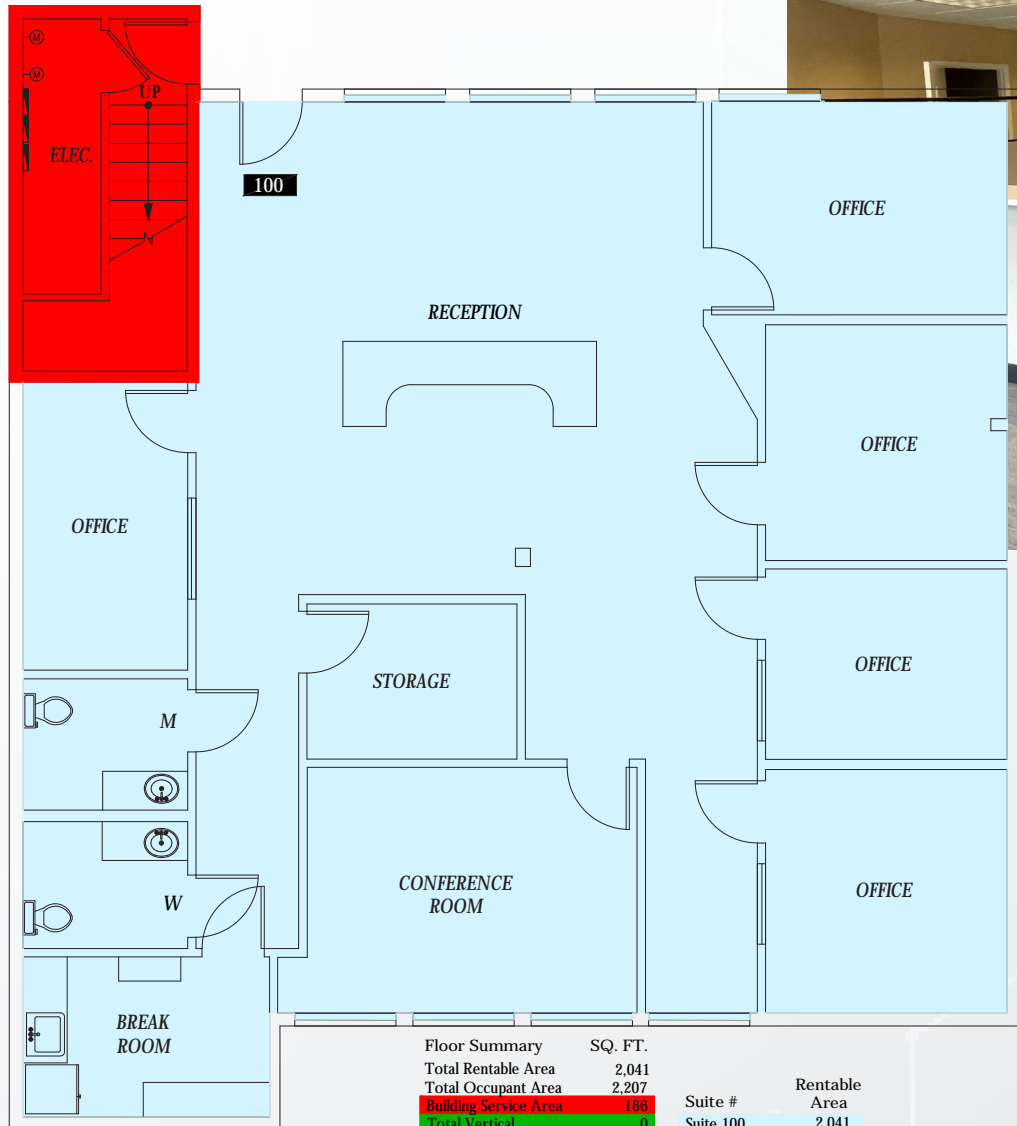
MAY 31, 2028
LEASE EXPIRATION

3.5/1,000 SF
PARKING STALLS

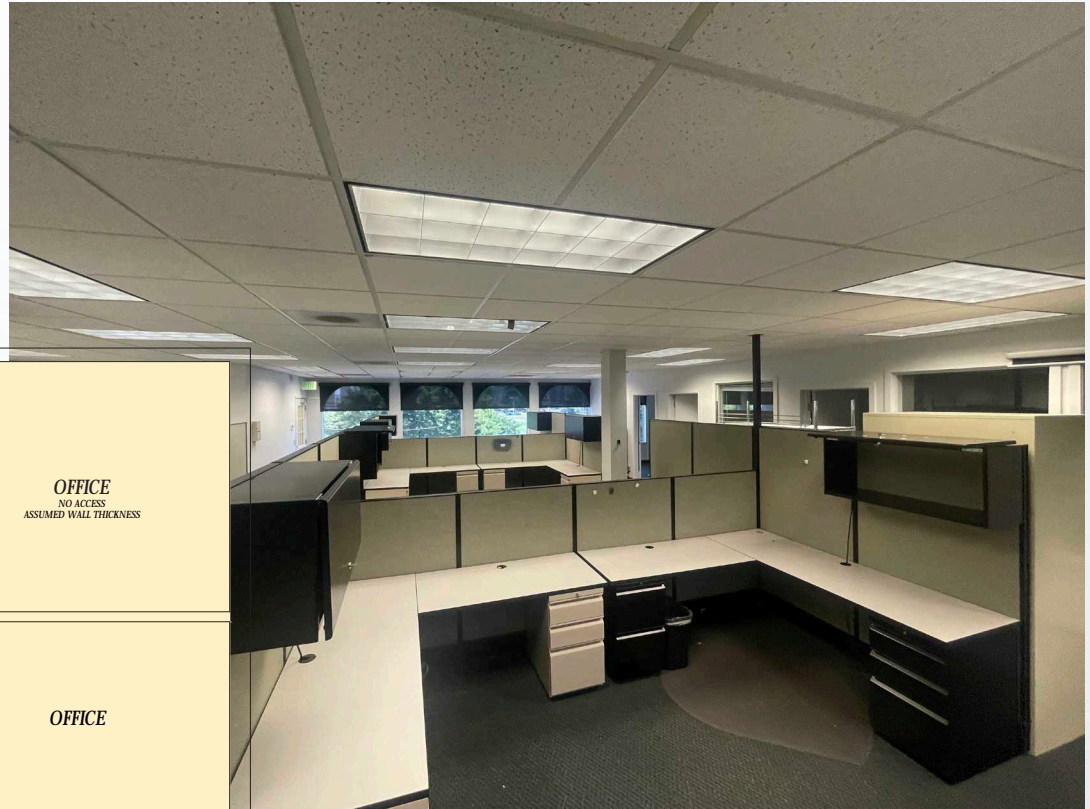
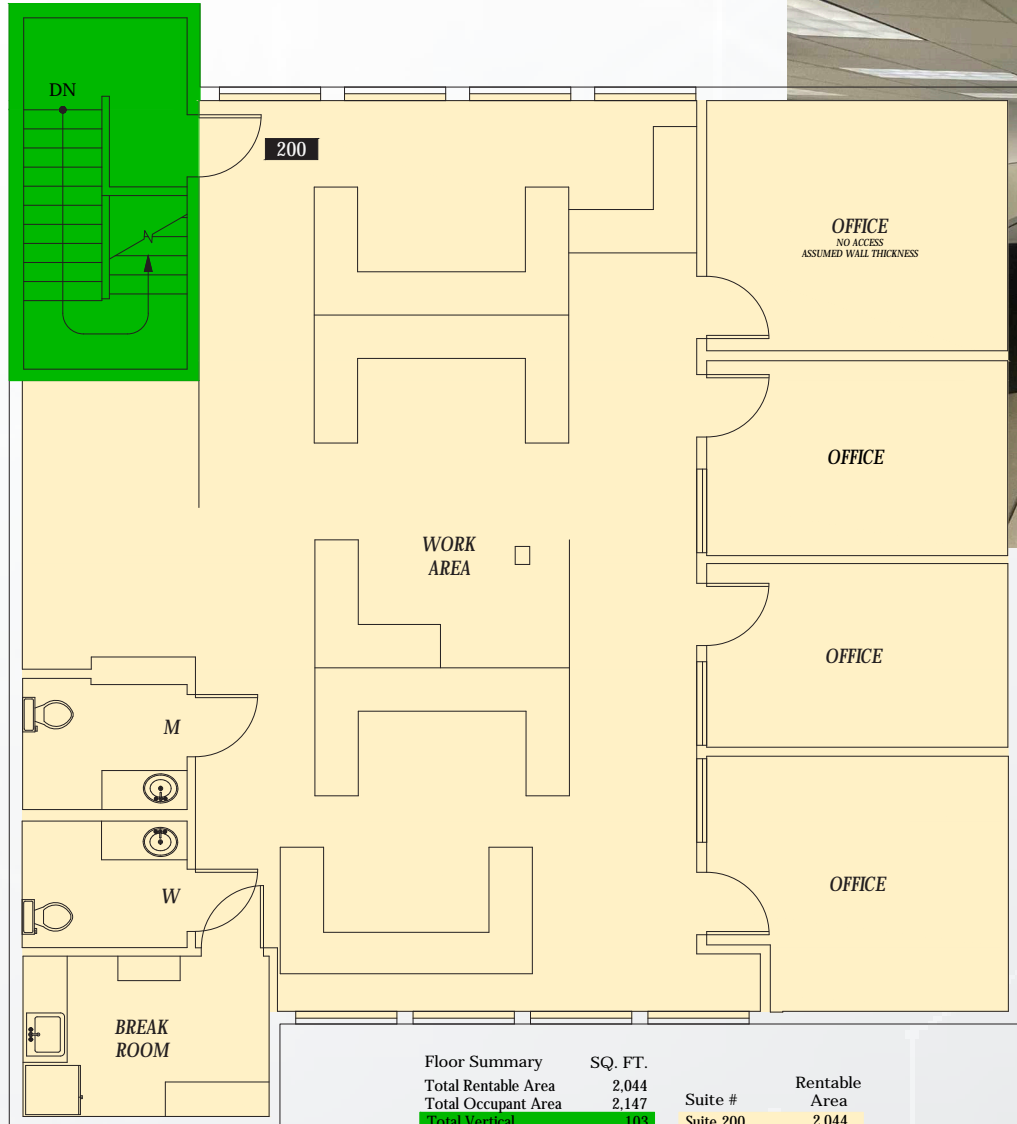
2227 NW 57TH STREET
SEATTLE, WA 98107



1ST FLOOR 2,041 SF



2ND FLOOR 2,044 SF



NEARBY AMENITIES



1. Ballard Commons Park
2. QFC
3. barre3
4. Salt & Sugar Cafe & Bakery
5. CrackleMi Vietnamese Grill
6. Mr. Gyros
7. Orangetheory Fitness
8. Cookie's Country Chicken
9. Ballard Beer Box Pizza
10. Banner Bank
11. Seattle Public Library

4,354 SF

BALLARD

SUBLEASE

2227 NW 57TH STREET
SEATTLE, WA 98107

 **Leibsohn
& Company**

ROYCE COTTLE
Senior Vice President
+1 206 999 3483
rcottle@leibsohn.com