

RAINIER PROPERTY MANAGEMENT CO, LLC

FOR LEASE – 20815 67th Ave W #101

Lynnwood, 98036



- 3050 SF of office, manufacturing and/or warehouse space
- Large, open space with flexible floorplan
- 8' wide grade-level bay door
- Garage and driveway located below busy shopping center
- Base rent \$15/SF/Mo + NNN
- Convenient access to Highway 99 and I-5

Anna Megenity

Rainier Property Management Co, LLC

12199 Village Center Place, Suite 201

Mukilteo, WA 98275

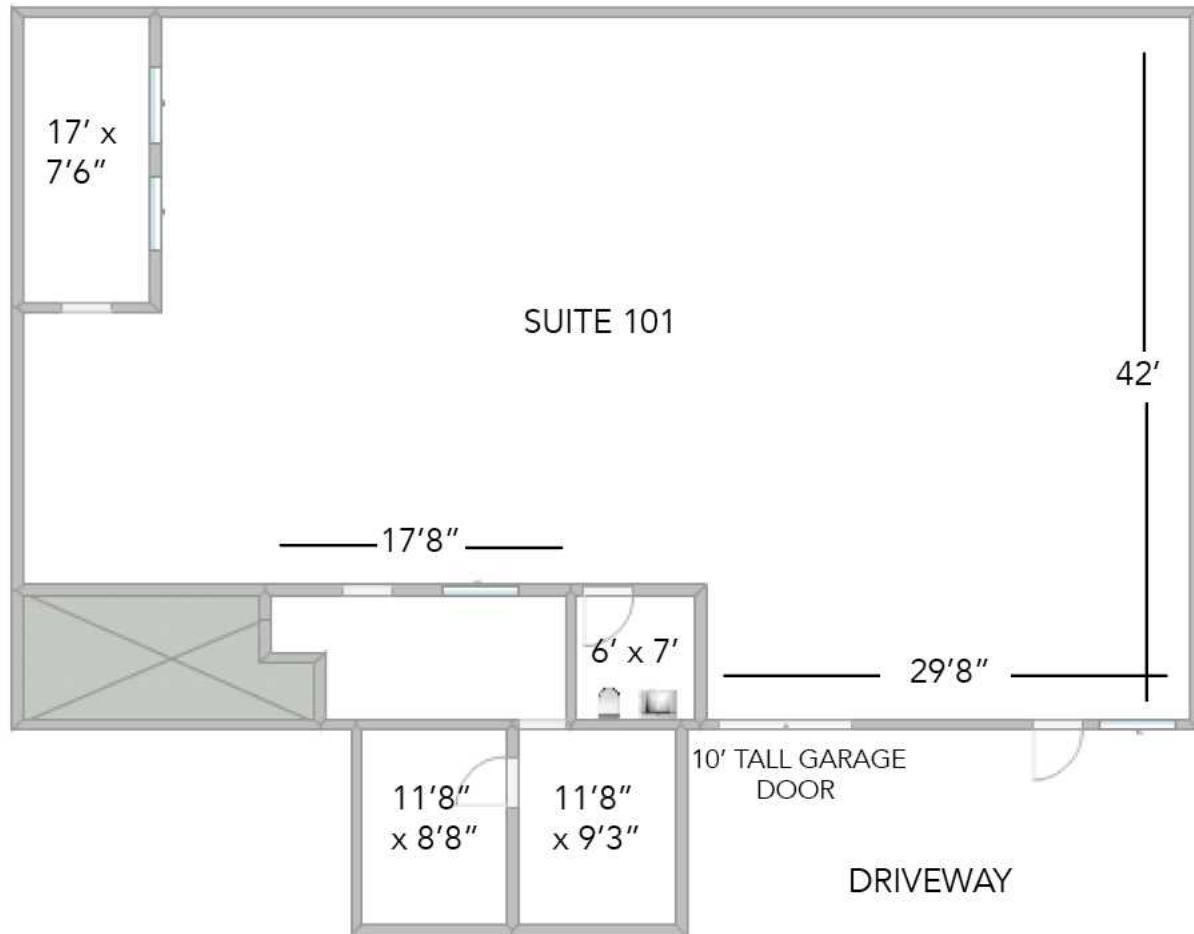
Phone: 425-252-3626

Email: anna@rpmcousa.com



20815 67th Ave #101, Lynnwood, WA

Approximately 3050 SF



The information provided herein has been obtained from sources believed to be reliable, but no representation or warranty, express or implied, is made with respect to the accuracy or completeness of any such information. Each prospective buyer or tenant should independently investigate, evaluate and verify all information provided herein and any other matters deemed material. Please consult your attorney, tax advisor or other professional advisor. The terms of sale or lease set forth herein are subject to change or withdrawal at any time and without notice.