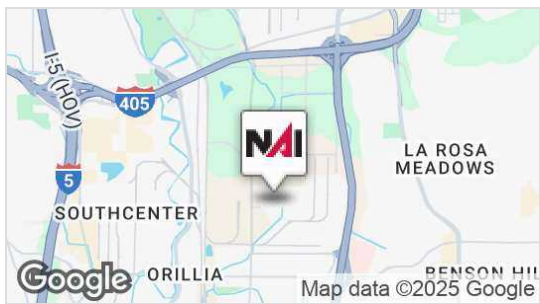


For Lease

# Incubator/Flex Space

Premier Business Park Location



## Oakesdale Commerce Center

800-1020 SW 34th St, Renton, WA

- Typical sizes range from 3,000 SF – 7,500 SF
- Grade Level loading
- 16' clear height
- Premier business park in Renton
- Newer construction with abundant parking
- Great location right off SR-167, I-5 & I-405
- Call for rates

Owned by:



**Connor Powell, SIOR, CCIM**

+1 425 586 5642 • cpowell@nai-psp.com

**Jeff Forsberg, CCIM**

+1 425 586 5610 • jforsberg@nai-psp.com

**Luke Jarvis**

+1 425 586 5609 • lj Jarvis@nai-psp.com



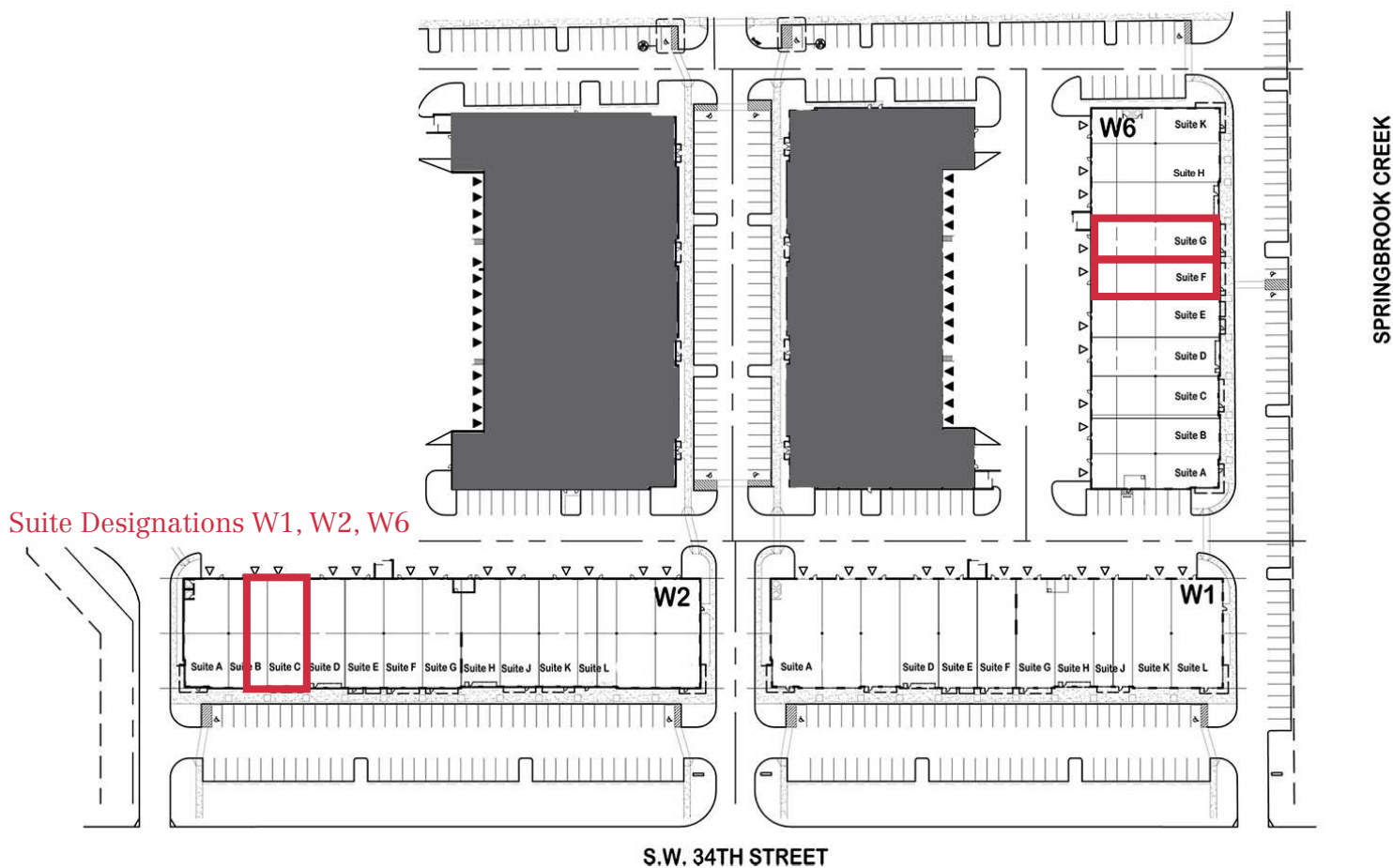
BELLEVUE | SEATTLE | TACOMA

10900 NE 8th Street, Suite 1500  
Bellevue, WA 98004  
+1 425 586 5600  
[nai-psp.com](http://nai-psp.com)

THE INFORMATION CONTAINED HEREIN HAS BEEN GIVEN TO US BY THE OWNER OF THE PROPERTY OR OTHER SOURCES WE DEEM RELIABLE, WE HAVE NO REASON TO DOUBT ITS ACCURACY, BUT WE DO NOT GUARANTEE IT. ALL INFORMATION SHOULD BE VERIFIED PRIOR TO PURCHASE OR LEASE.

Industrial for Lease

# Oakesdale Commerce Center



## Incubator Space Available

Building, Suite	Size (SF) (Office SF)	Shell Rate Office Rate	Clear Height	Loading	Available	Comments
W2, Suite C	3,816 (1,020)	Call for rates	16'	2 GL	Now	Great frontage space
W6, Suite F	3,019 (1,422)	Call for rates	16'	1 GL	3/1/2026	Can combine with Ste G for 6,038 SF as of 3/1/26.
W6, Suite G	3,019 (1,623)	Call for rates	16'	1 GL	Now	Market ready improvements complete; ready for move in.

Owned by:



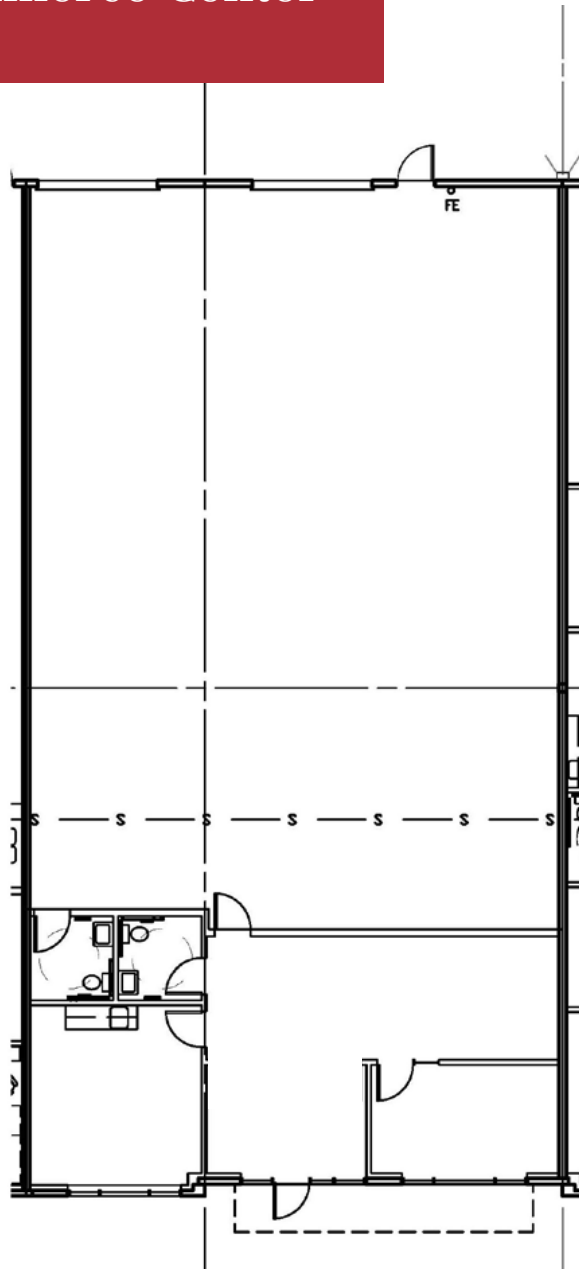
BELLEVUE | TACOMA

10900 NE 8th Street, Suite 1500  
Bellevue, WA 98004  
+1 425 586 5600  
[nai-psp.com](http://nai-psp.com)

THE INFORMATION CONTAINED HEREIN HAS BEEN GIVEN TO US BY THE OWNER OF THE PROPERTY OR OTHER SOURCES WE DEEM RELIABLE, WE HAVE NO REASON TO DOUBT ITS ACCURACY, BUT WE DO NOT GUARANTEE IT. ALL INFORMATION SHOULD BE VERIFIED PRIOR TO PURCHASE OR LEASE.

Industrial for Lease

## Oakesdale Commerce Center



W2, Suite C

Building, Suite	Size (SF) (Office SF)	Shell Rate Office Rate	Clear Height	Loading	Available	Comments
W2, Suite C	3,816 (1,020)	Call for rates	16'	2 GL	Now	Great frontage space

Owned by:



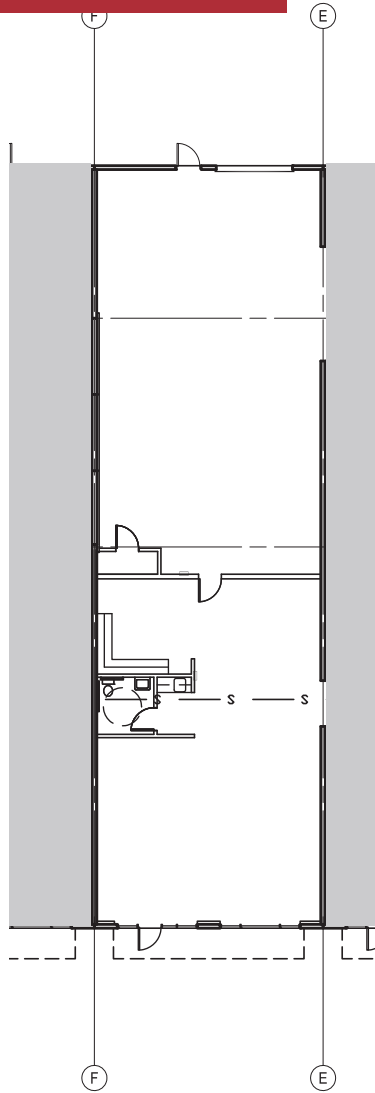
BELLEVUE | TACOMA

10900 NE 8th Street, Suite 1500  
Bellevue, WA 98004  
+1 425 586 5600  
[nai-psp.com](http://nai-psp.com)

THE INFORMATION CONTAINED HEREIN HAS BEEN GIVEN TO US BY THE OWNER OF THE PROPERTY OR OTHER SOURCES WE DEEM RELIABLE, WE HAVE NO REASON TO DOUBT ITS ACCURACY, BUT WE DO NOT GUARANTEE IT. ALL INFORMATION SHOULD BE VERIFIED PRIOR TO PURCHASE OR LEASE.

Industrial for Lease

# Oakesdale Commerce Center



## W6, Suite F

Building, Suite	Size (SF) (Office SF)	Shell Rate Office Rate	Clear Height	Loading	Available	Comments
W6, Suite F	3,019 (1,422)	Call for rates	16'	1 GL	3/1/2026	Can combine with Ste G for 6,038 SF as of 3/1/26.

Owned by:



BELLEVUE | TACOMA

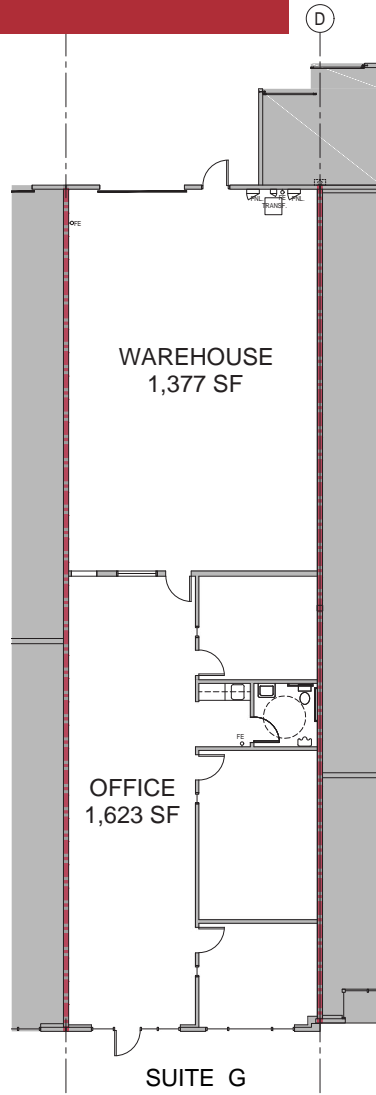
10900 NE 8th Street, Suite 1500  
Bellevue, WA 98004  
+1 425 586 5600  
[nai-psp.com](http://nai-psp.com)

THE INFORMATION CONTAINED HEREIN HAS BEEN GIVEN TO US BY THE OWNER OF THE PROPERTY OR OTHER SOURCES WE DEEM RELIABLE, WE HAVE NO REASON TO DOUBT ITS ACCURACY, BUT WE DO NOT GUARANTEE IT. ALL INFORMATION SHOULD BE VERIFIED PRIOR TO PURCHASE OR LEASE.



Industrial for Lease

# Oakesdale Commerce Center



## W6, Suite G

Building, Suite	Size (SF) (Office SF)	Shell Rate Office Rate	Clear Height	Loading	Available	Comments
W6, Suite G	3,019 (1,623)	Call for rates	16'	1 GL	Now	Market ready improvements complete; ready for move in.

Owned by:



BELLEVUE | TACOMA

10900 NE 8th Street, Suite 1500  
Bellevue, WA 98004  
+1 425 586 5600  
[nai-psp.com](http://nai-psp.com)

THE INFORMATION CONTAINED HEREIN HAS BEEN GIVEN TO US BY THE OWNER OF THE PROPERTY OR OTHER SOURCES WE DEEM RELIABLE, WE HAVE NO REASON TO DOUBT ITS ACCURACY, BUT WE DO NOT GUARANTEE IT. ALL INFORMATION SHOULD BE VERIFIED PRIOR TO PURCHASE OR LEASE.