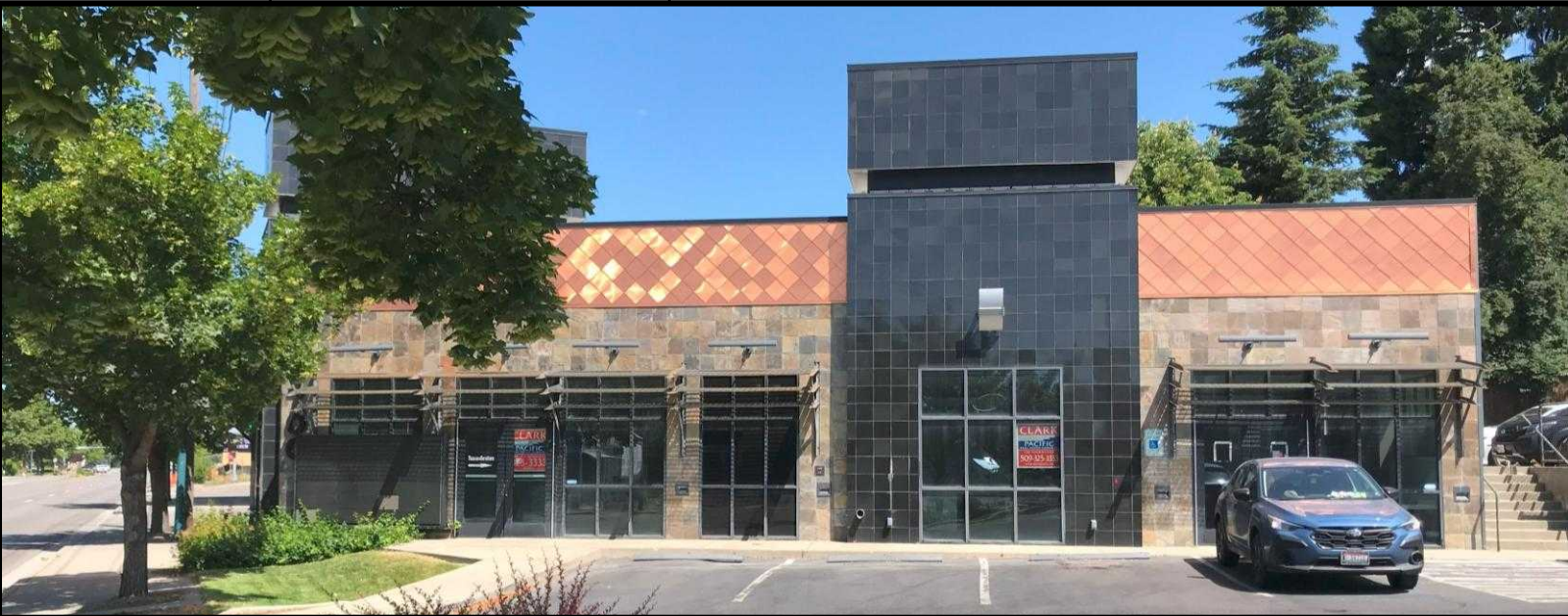


FOR LEASE

Prime Retail Building For lease

1700 Northwest Blvd Coeur D'Alene, ID

SPACE INFO		Highlights
Lease Price	\$20 PSF NNN	<ul style="list-style-type: none"> • Highly visible freestanding building • Good access • High traffic count • Modern, attractive façade • Next to Dutch Bros coffee
Building Size	2,779 ± SF	
Lot Size	10,088 ± SF	
Traffic Count	31,596 ± ADT	
Property Taxes	\$4,346.21 / year	



FOR LEASE

Prime Retail Building For lease

1700 Northwest Blvd Coeur D'Alene, ID

