



Office/medical-related space for lease

Kendra Mills

Senior Client Services Specialist
425 453 3135
kendra.mills@colliers.com

Derek Heed

Executive Vice President
425 453 3133
derek.heed@colliers.com



Romero Professional Building

19110 Bothell Way NE • Bothell, WA 98011

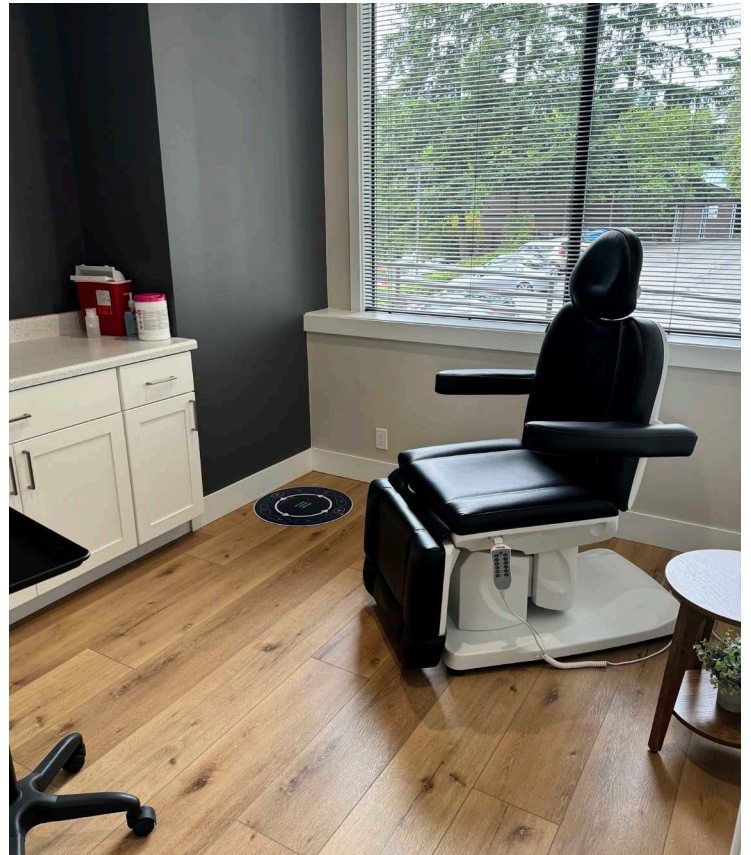
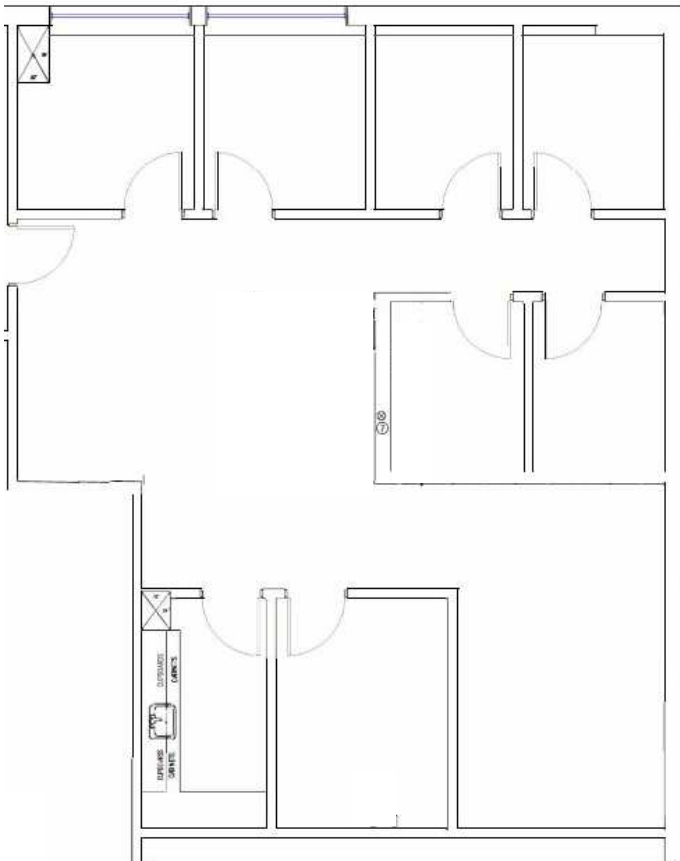
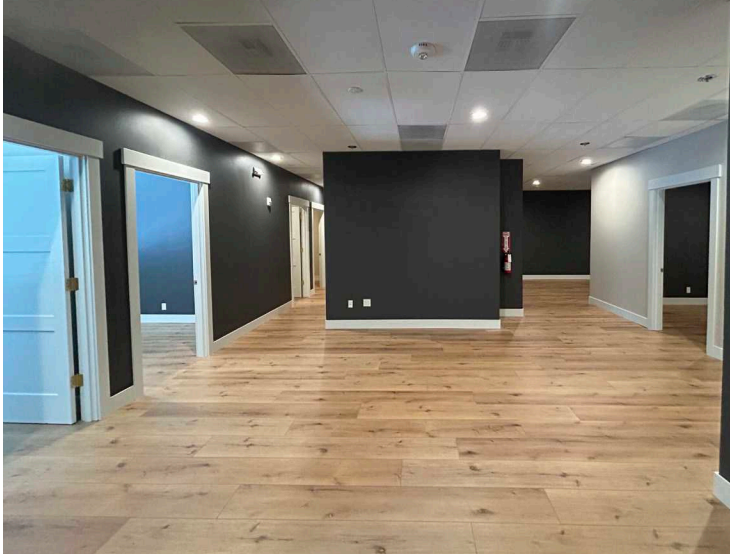
Available space: Suite 201 - 1,588 RSF

- Newly built-out for office or medical-related use
 - large reception area
 - seven privates/treatment rooms
 - conference room
 - break-room
- Convenient downtown Bothell location
- Walking distance to retail and restaurants
- Easy access to I-405
- Available immediately

Rates:

- Asking rent - \$27.00/RSF/Yr, NNN
- NNNs - \$19.50/RSF/Yr

Office/medical-related space for lease



Colliers International
11225 SE 6th St., Suite 240
Bellevue, WA 98004
colliers.com

Kendra Mills
Senior Client Services Specialist
425 453 3135
kendra.mills@colliers.com

Derek Heed
Executive Vice President
425 453 3133
derek.heed@colliers.com