

FOR LEASE

# FORMER HINDS-BOCK BUILDING

*23,900 SF stand-alone industrial building  
(divisible to 13,878 SF or 10,022 SF)*

2122 222ND ST SE, BOTHELL, WA



KIDDER.COM

**km** Kidder  
Mathews



## FORMER HINDS-BOCK BUILDING



### PROPERTY OVERVIEW

ADDRESS	2122 222nd St SE, Bothell, WA
BUILDING SIZE	±23,900 SF
OFFICE SIZE	±6,161 SF
WAREHOUSE SIZE	±17,739 SF
CLEAR HEIGHT	24'
LEASE RATE NNN (OFFICE)	\$2.10/SF
LEASE RATE NNN (WAREHOUSE)	\$1.50/SF
LEASE RATE (NNN)	\$0.36/SF
POWER	3 phase, 800 amps of 480 V power
AIR LINES	Well distributed power and compressed air lines
LOADING	7 dock-high doors, 4 doors with levels 2 grade-level doors
INTERNET	Comcast Fiber
BUILDING FEATURES	Sprinklered

\*Building divisible to ±13,878 SF (5,461 SF office) and ±10,022 SF (700 SF office)

**23,900 SF**  
AVAILABLE

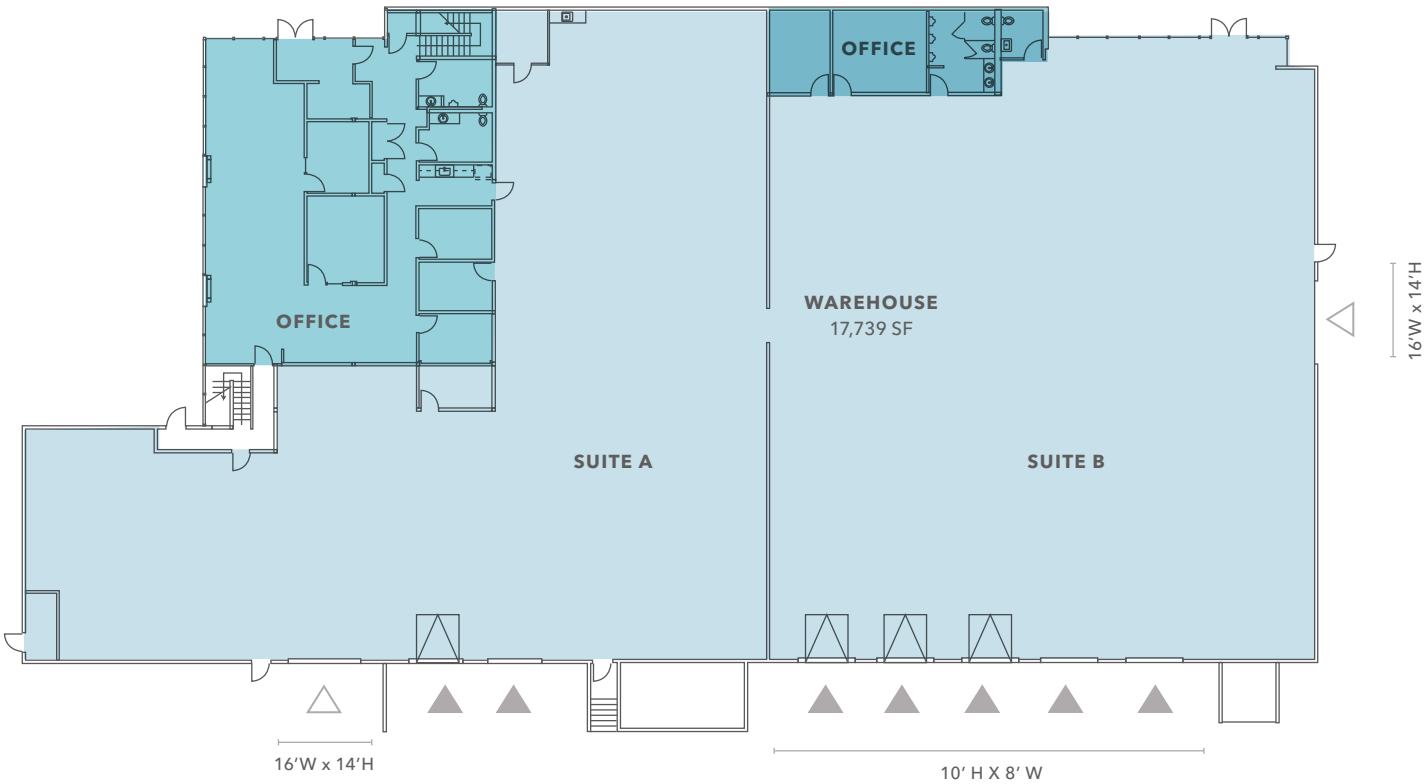
**45**  
PARKING STALLS

# FLOOR 1

Building divisible to Suite A: ±13,878 SF (5,461 SF Office) & Suite B: ±10,022 SF (700 SF Office)

LEGEND

- Office
- Warehouse
- Grade level loading
- Dock-high loading



24'

CLEAR HEIGHT

7

DOCK DOORS

2

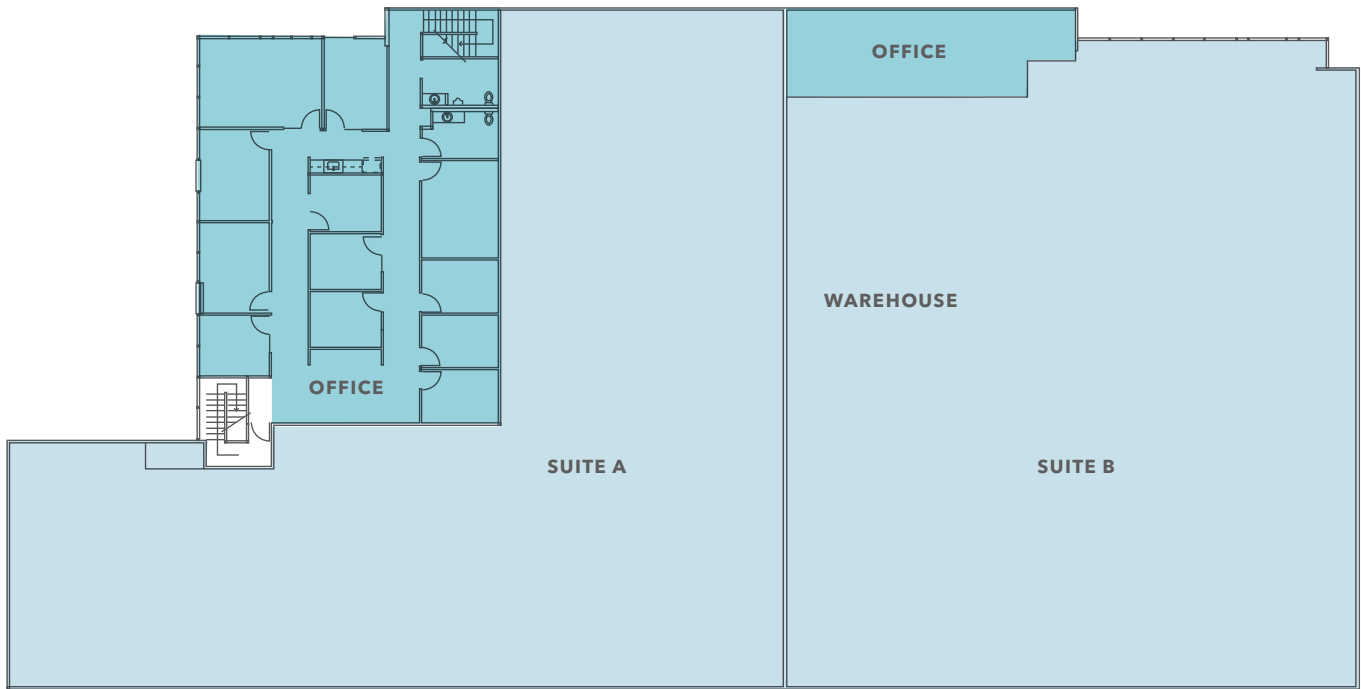
GRADE DOORS

# FLOOR 2

UPPER LEVEL

LEGEND

- Office
- Warehouse
- Grade level loading
- Dock-high loading



24'  
CLEAR HEIGHT

3 PHASE  
POWER



FORMER HINDS-BOCK BUILDING







## FORMER HINDS-BOCK BUILDING

*Exclusively  
Listed by*

**TODD GAUTHIER**  
Executive Vice President  
425.450.1118  
[todd.gauthier@kidder.com](mailto:todd.gauthier@kidder.com)

**JASON BLOOM**  
Executive Vice President  
425.450.1102  
[jason.bloom@kidder.com](mailto:jason.bloom@kidder.com)

**KIDDER.COM**

This information supplied herein is from sources we deem reliable. It is provided without any representation, warranty, or guarantee, expressed or implied as to its accuracy. Prospective Buyer or Tenant should conduct an independent investigation and verification of all matters deemed to be material, including, but not limited to, statements of income and expenses. Consult your attorney, accountant, or other professional advisor.

