



# FORMER RITE AID

27000 MILLER BAY RD NE  
KINGSTON, WA 98346

PACIFIC ASSET ADVISORS, INC.



## LISTING DETAILS

*RENTABLE SF*  
**18,187 SF**

**CALL  
FOR  
RATE**

**ADDRESS:** 27000 Miller Bay Rd NE  
Kingston, WA 98346

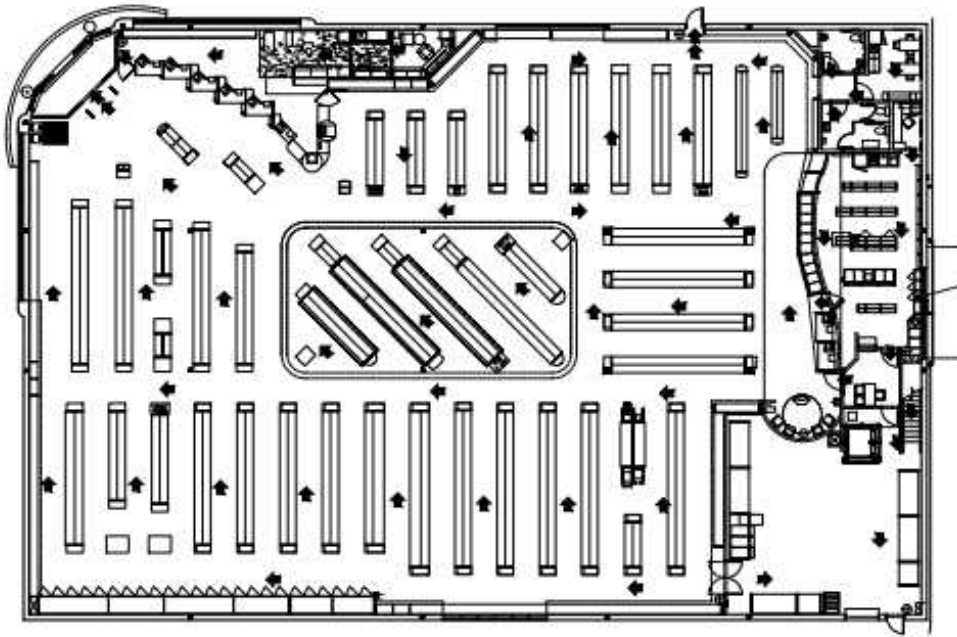
**LOT SIZE:** 2.16 AC

**SQUARE FOOTAGE:** 18,187 SF

**PROPERTY  
HIGHLIGHTS:**

- Situated at a signalized intersection of Miller Bay Road NE and State Route 104, the property benefits from high visibility and accessibility.
- Close proximity to Kingston Ferry Terminal enhances visibility.
- Located across the street from key retail hub featuring Safeway, Safeway Fuel, and more.

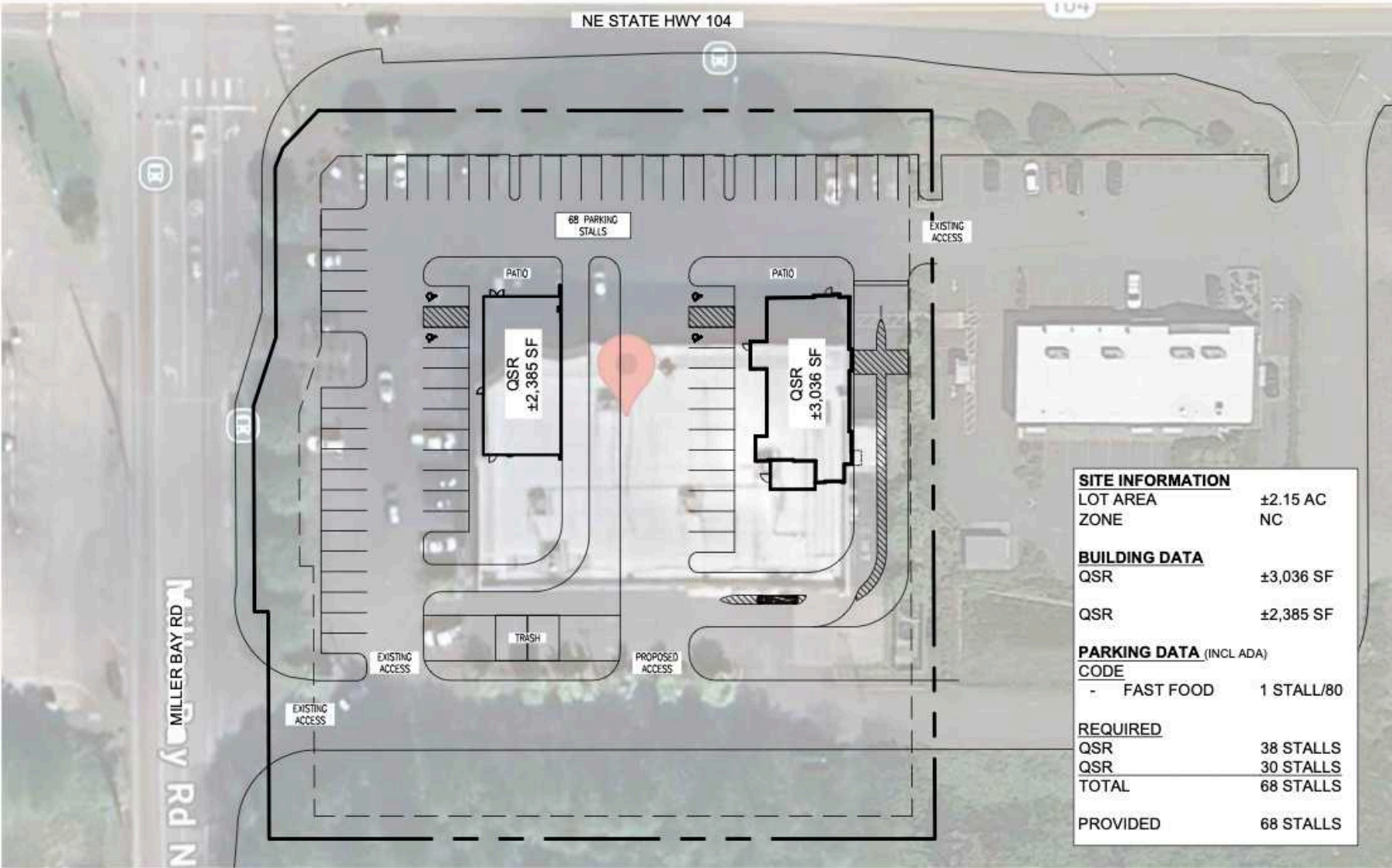




## DEMOGRAPHICS

	1 MILE	3 MILES	5 MILES
POPULATION	742	7,260	18,323
HOUSEHOLDS	289	2,986	7,534
AVERAGE HH INCOME	\$143,131	\$141,851	\$136,639
MEDIAN HH INCOME	\$112,741	\$108,742	\$104,741
DAYTIME POPULATION	473	4,365	9,793
MEDIAN AGE	41	44.4	45.8
BUSINESSES	40	353	636
EMPLOYEES	237	1,880	3,059

CONCEPTUAL PLANS



SITE INFORMATION		
LOT AREA		±2.15 AC
ZONE		NC
BUILDING DATA		
QSR		±3,036 SF
QSR		±2,385 SF
PARKING DATA (INCL ADA)		
CODE		
-	FAST FOOD	1 STALL/80
REQUIRED		
QSR		38 STALLS
QSR		30 STALLS
TOTAL		68 STALLS
PROVIDED		68 STALLS



AERIAL

SAFeway



16,089 VPD



verizon



RICHARD GORDON  
ELEMENTARY SCHOOL

KINGSTON  
HIGH SCHOOL

KINGSTON  
MIDDLE SCHOOL

GROCERY OUTLET

T Mobile



DOWNTOWN  
KINGSTON

KINGSTON  
FERRY  
TERMINAL



425.990.6200 | PAADVISORS.COM



# CONTACT



**ADAM GREENBERG**  
SENIOR VICE PRESIDENT  
PARTNER  
425.503.1339  
ADAM@PAADVISORS.COM



**ANDREW CLARKE**  
SENIOR VICE PRESIDENT  
360.927.2527  
ANDREW@PAADVISORS.COM

**PACIFIC ASSET ADVISORS, INC.**  
THE PREMIER CHOICE OF THE PACIFIC NORTHWEST

14205 SE 36TH ST, SUITE 215, BELLEVUE, WA 98006