

INDUSTRIAL FOR LEASE

BUCKLEY INDUSTRIAL YARD

28008 HINKLEMAN RD, BUCKLEY, WA



This 2.31 acre yard is graveled and fenced, with two wide swing gates, an older quonset hut and two mobile offices in place. Located one parcel north of Hwy 410 in the City of Buckley. Access is via Mundy Loss Road, a signalized intersection of Hwy 410, approximately 15 minutes from the industrial areas of Sumner, Pacific and Puyallup.

BUCKLEY INDUSTRIAL YARD

28008 HINKLEMAN RD, BUCKLEY, WA

LEE & ASSOCIATES
COMMERCIAL REAL ESTATE SERVICES



Optional Quansit Hut
Avaialbe at Expense

BUCKLEY INDUSTRIAL YARD

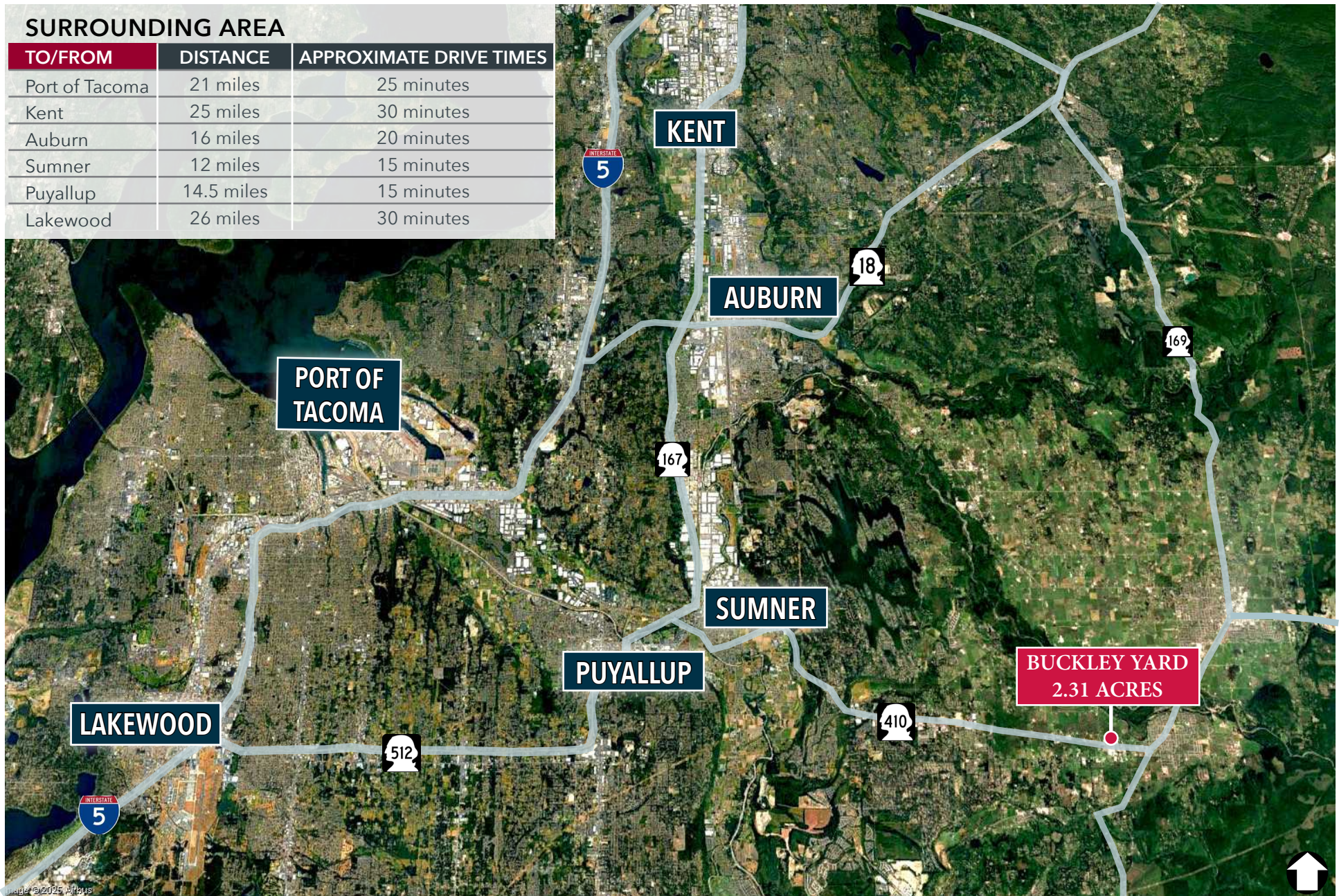
28008 HINKLEMAN RD, BUCKLEY, WA

LEE & ASSOCIATES
COMMERCIAL REAL ESTATE SERVICES



SURROUNDING AREA

TO/FROM	DISTANCE	APPROXIMATE DRIVE TIMES
Port of Tacoma	21 miles	25 minutes
Kent	25 miles	30 minutes
Auburn	16 miles	20 minutes
Sumner	12 miles	15 minutes
Puyallup	14.5 miles	15 minutes
Lakewood	26 miles	30 minutes



AMENITIES



Mike Avila, Pacific Rim
avila@pacificrim.net
(253) 961-4305

Vanessa Herzog, SIOR, CCIM
vherzog@lee-associates.com
(253) 444-3020