

WestPark Business Park Building R

5,846 SF
Available for Sublease

15241 NE 90th Street, Redmond, WA

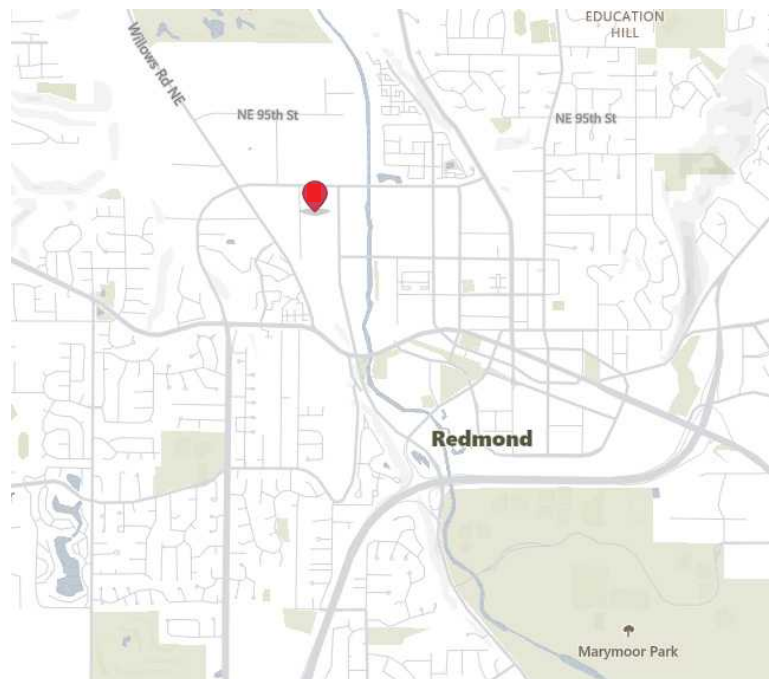


Sublease Highlights

- Warehouse SF: 2,368 SF
- Office SF: 3,478 SF
- Master lease expiration: June 30, 2027
- Above standard finishes
- Existing FF & E to remain // turn-key space

Building Amenities

- New Amenities Center on-site
- New outdoor pavilion with gas fire pit & covered seating
- Outdoor basketball area & access to the Sammamish Trail



CODY MORRISON
+1 206 255 3378
cody.morrison@jll.com

Jones Lang LaSalle Brokerage, Inc.

Available Now - Sublease expires June 30, 2027

Call broker for rates

Suite highlights

5,846 SF

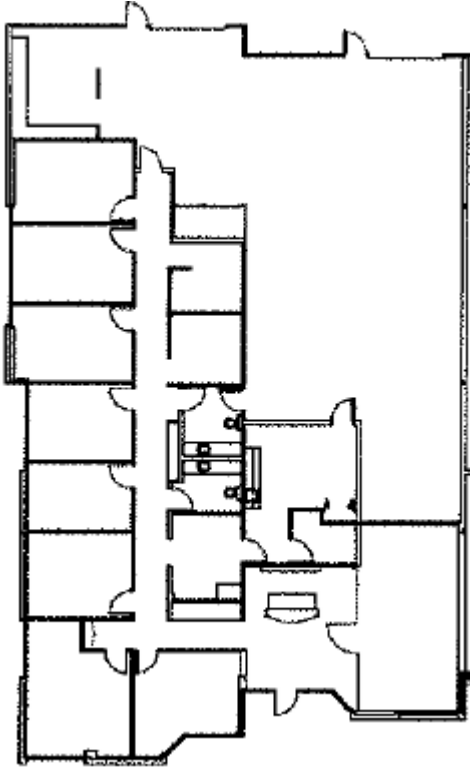
Total size

3,478 SF

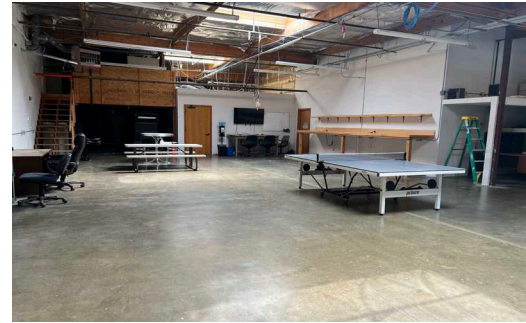
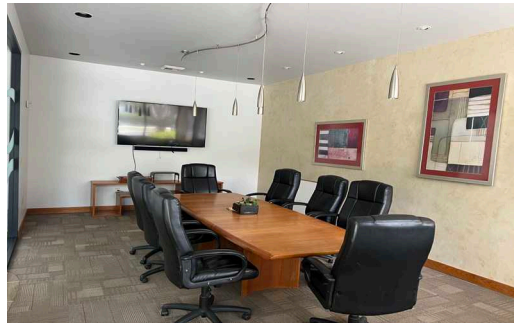
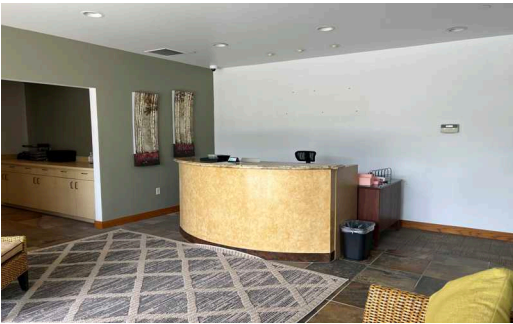
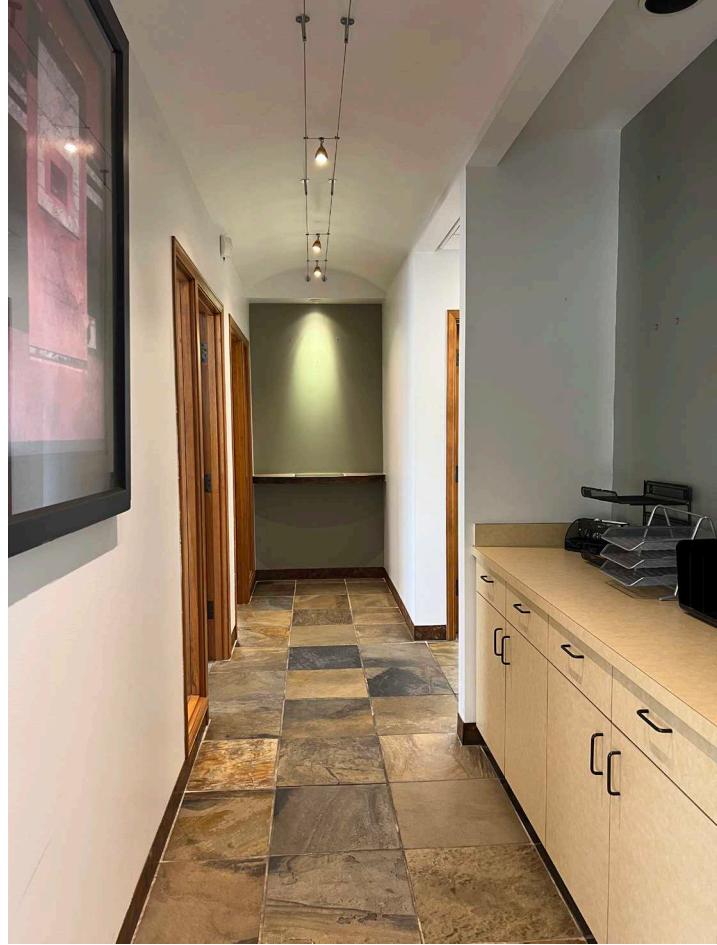
Office

2,368 SF

Warehouse



Floor plan



CODY MORRISON
+1 206 255 3378
cody.morrison@jll.com

Jones Lang LaSalle Brokerage, Inc.