

510-555

Andover Park West

Tukwila WA 98188

For Sublease

120,094 SF Standalone Building

CBRE

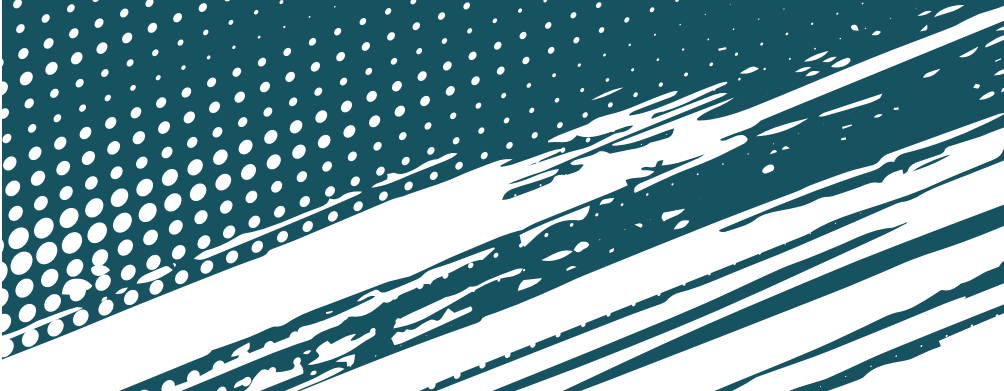


Property Highlights

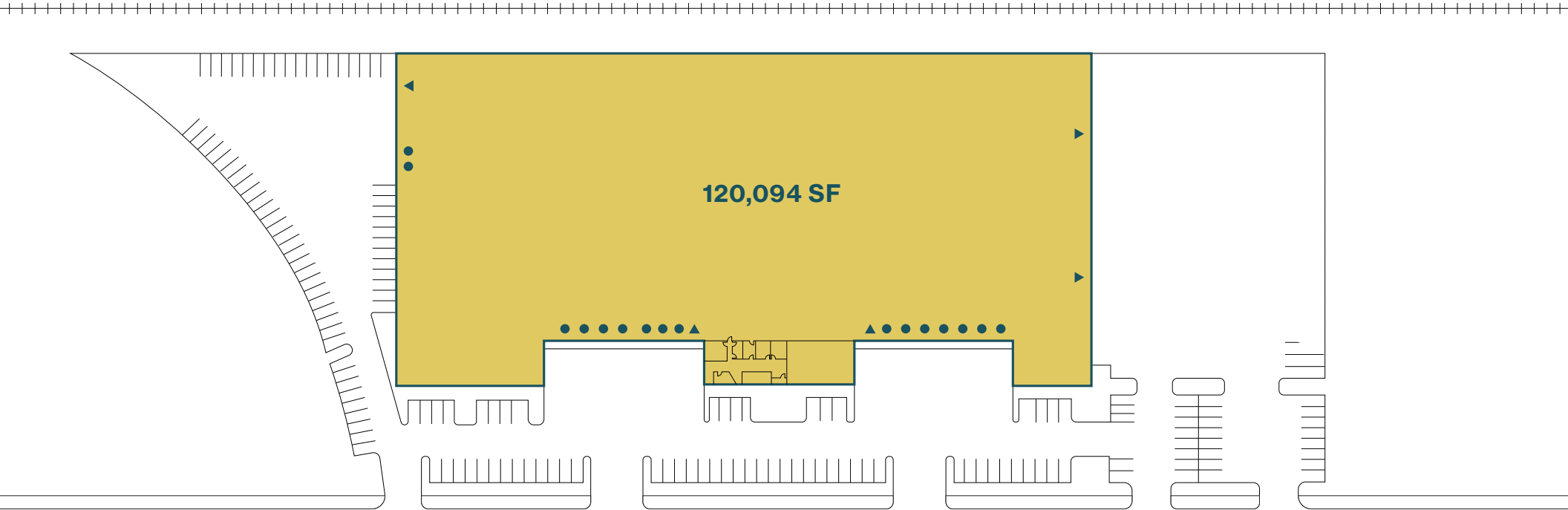
- 120,094 SF standalone building
- Sublease expires Feb 2027
- Large, fenced yard in the south
- Unsecured yard to the north
- 14 dock doors
- 5 grade level doors, 3 at grade
- 26'-28' clear height
- Ample parking
- Easy access to I-5, I-405, Hwy-167 and SeaTac Airport



Site Plan



- ▲ Grade Level Doors
- Dock High Doors

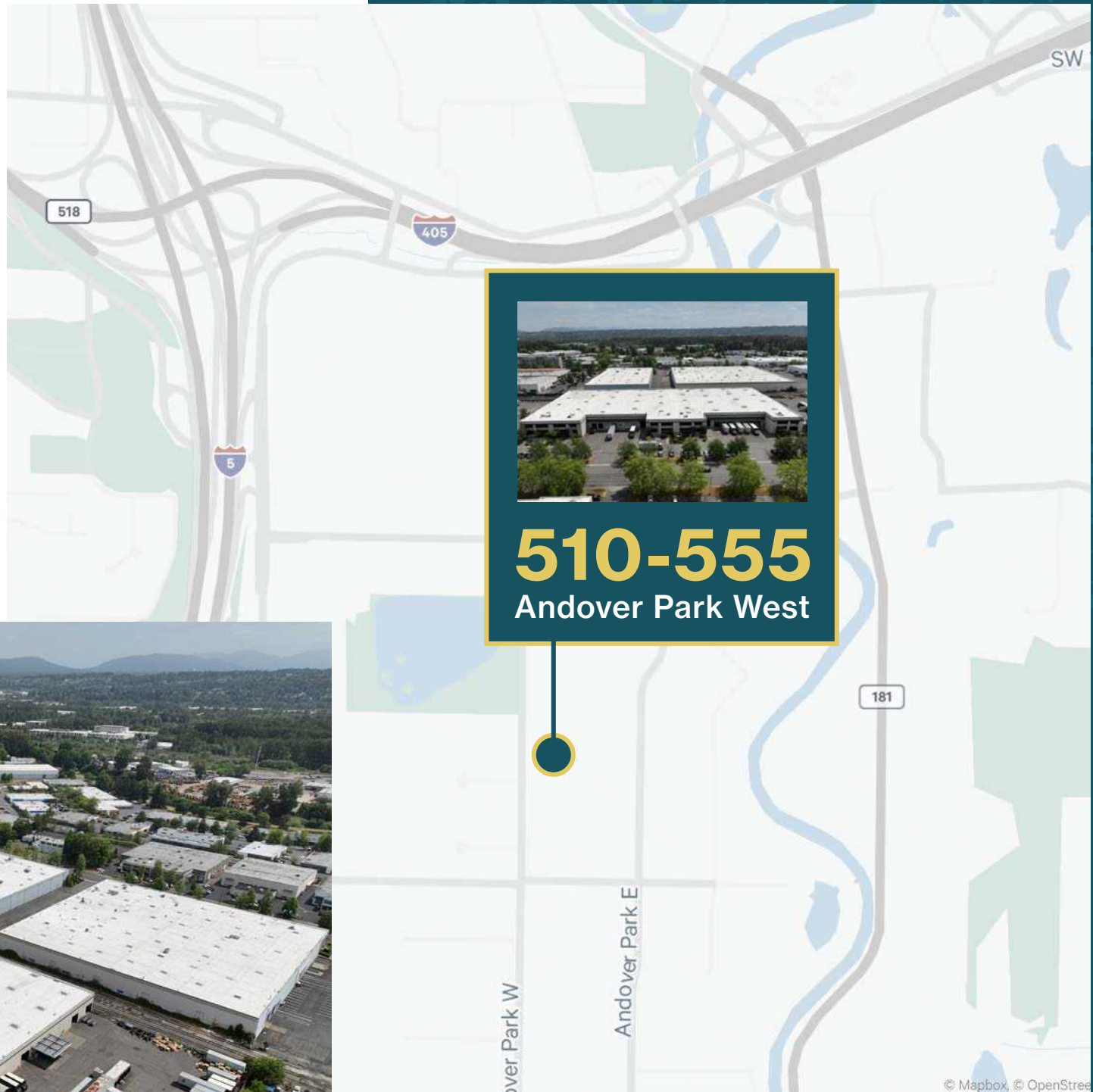


Andover Park W



Drive Times

- Hwy 518: 4 Min
- I-5: 4 Min
- I-405: 4 Min
- Hwy 167: 9 Min
- SeaTac Airport: 10 Min
- Port of Seattle: 20 Min
- Port of Tacoma: 30 Min



510-555

Andover Park West

Tukwila WA 98188



Andrew Stark

Executive Vice President

+1 206 442 2746

andrew.stark@cbre.com

Andrew Hitchcock

Executive Vice President

+1 206 442 2719

andrew.hitchcock@cbre.com

CBRE