



BURIEN TOWN PLAZA

*Junior Anchor Retail Space
Available for Lease in
Downtown Burien, WA*

14901 4TH AVE SW
BURIEN, WA

ERIC BISSELL

425.450.1121

eric.bissell@kidder.com

BRAD BISSELL

425.450.1182

brad.bissell@kidder.com

KIDDER.COM



BURIEN TOWN PLAZA



Prime retail and office space available, with anchor tenants including LA Fitness, PetSmart, CVS, Ace Hardware, and Burger King



CLOSE TO SEATAC AIRPORT - 36.2M ANNUAL PASSENGERS



EXCELLENT DEMOGRAPHICS & HIGH TRAFFIC COUNTS



ADJACENT TO TRANSIT CENTER - 2M ANNUAL RIDERS



DIRECT ACCESS FROM SR-518 & 4TH AVE SW

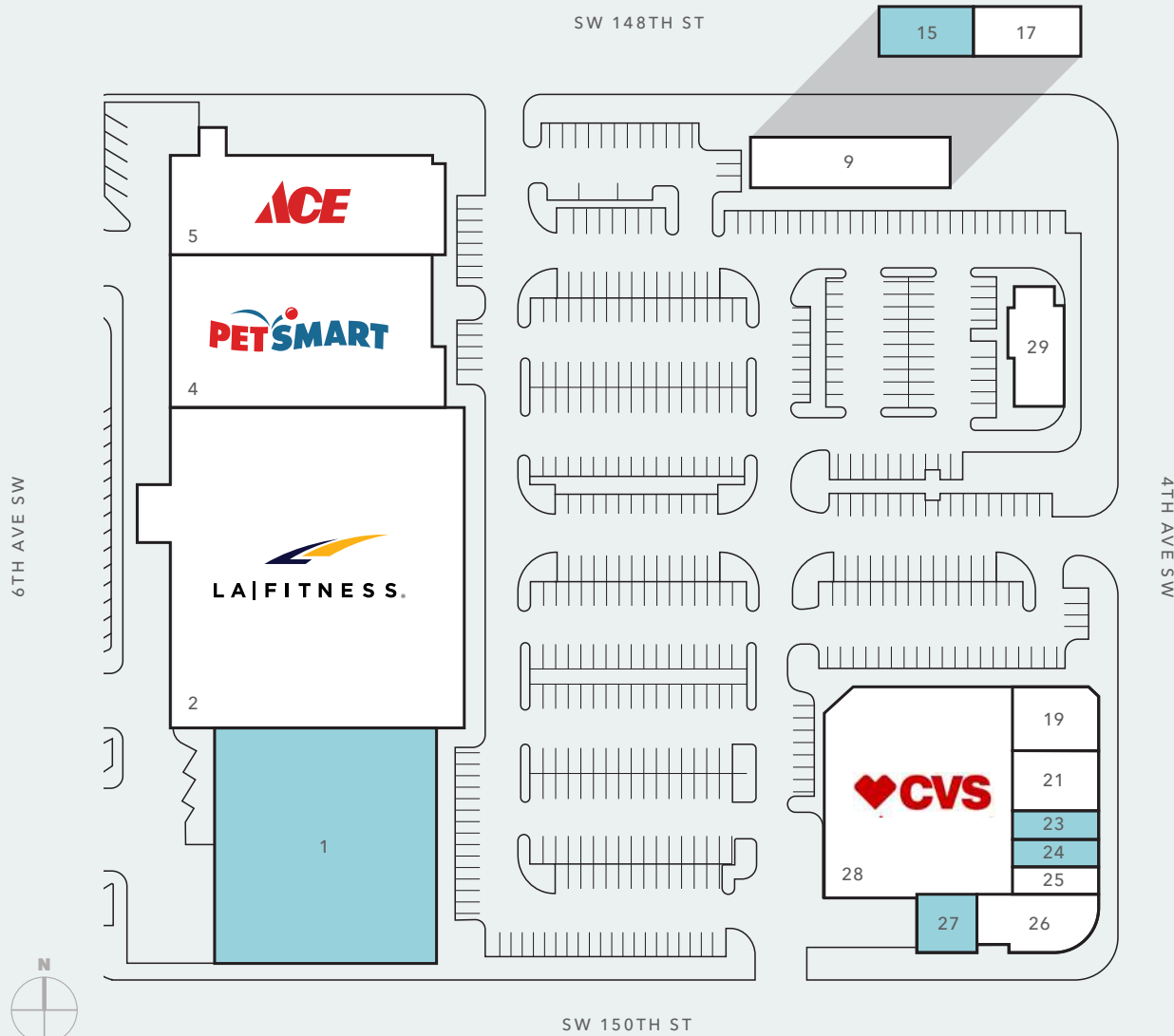


STRONG DAYTIME & RESIDENTIAL POPULATION



ABUNDANT FREE CUSTOMER PARKING

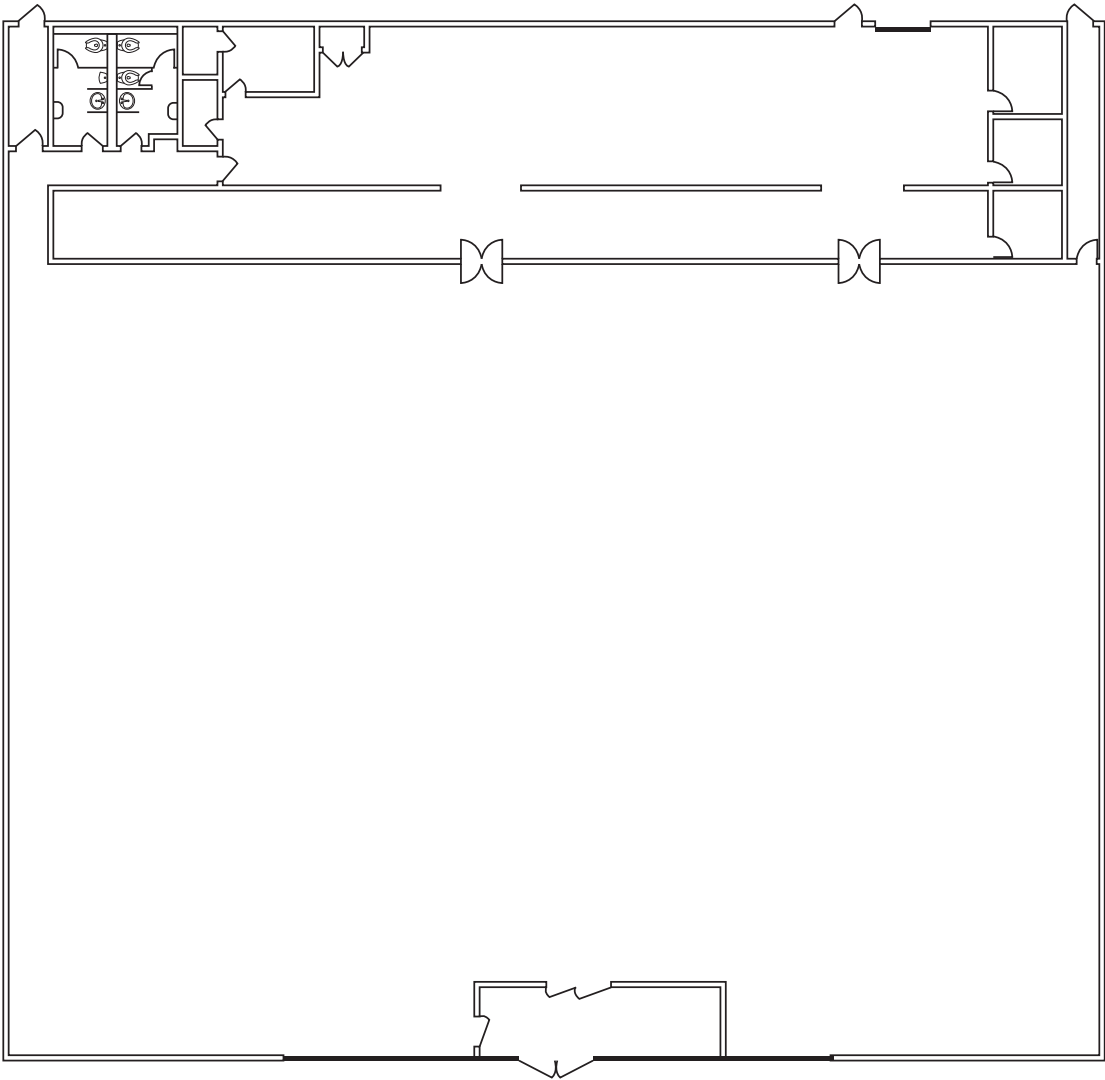
BURIEN TOWN PLAZA



PROPERTY TENANTS

Suite	Tenant	Total SF
1	Junior Anchor Available	24,261
2	LA Fitness	44,743
4	PetSmart	18,367
5	Ace Hardware	12,856
9	Highline Audiology	4,118
15	Available	1,433
19	Domino's Pizza	2,374
21	Music & Arts Center	2,242
23	Available	1,049
24	Available	1,074
25	Tulip's Nail Salon	1,106
26	Seattle Metropolitan Credit Union	2,529
27	Available	1,022
28	CVS	17,583
29	Burger King	2,722

SUITE 1 FLOOR PLAN



24,261 SF

AVAILABLE

CALL

FOR LEASE RATES

NOW

AVAILABLE

BURIEN TOWN PLAZA



DEMOGRAPHICS

POPULATION

	1 Mile	3 Miles	5 Miles
2024 TOTAL	15,536	93,804	206,370
2029 PROJECTION	15,339	93,889	207,080
2020 CENSUS	15,484	95,412	210,225
PROJECTED GROWTH 2024 - 2029	-0.3%	-	-

MEDIAN AGE & GENDER

	1 Mile	3 Miles	5 Miles
MEDIAN AGE	38.8	38.0	37.9
% FEMALE	49.0%	48.3%	48.7%
% MALE	51.0%	51.7%	51.3%

HOUSEHOLDS

	1 Mile	3 Miles	5 Miles
2024 TOTAL	6,516	35,554	79,217
2029 PROJECTED	6,345	35,137	78,503
2020 CENSUS	6,516	35,386	78,527
GROWTH 2024 - 2029	-0.5%	-0.2%	-0.2%
OWNER-OCCUPIED	44.8%	53.4%	54.9%
RENTER-OCCUPIED	55.2%	46.6%	45.1%

INCOME

	1 Mile	3 Miles	5 Miles
2024 AVERAGE HH INCOME	\$132,711	\$133,203	\$136,757
2029 PROJECTED HH INCOME	\$140,860	\$140,132	\$143,952
ANNUAL CHANGE 2024 - 2029	1.2%	1.0%	1.1%

EMPLOYMENT

	1 Mile	3 Miles	5 Miles
TOTAL BUSINESSES	1,461	3,956	10,504
TOTAL EMPLOYEES	8,084	26,536	106,195
WHITE COLLAR WORKERS	60.3%	55.3%	58.7%
BLUE COLLAR WORKERS	39.7%	44.7%	41.3%

EDUCATION

	1 Mile	3 Miles	5 Miles
SOME HIGH SCHOOL	4.4%	5.5%	5.3%
HIGH SCHOOL DIPLOMA	23.0%	22.3%	20.9%
SOME COLLEGE	19.9%	19.1%	19.5%
ASSOCIATE	11.4%	9.7%	9.6%
BACHELOR'S	22.4%	23.7%	24.9%
GRADUATE	12.0%	11.0%	12.7%

Data Source: ©2024, Sites USA



BURIEN TOWN PLAZA

*For more information on
this property, please contact*

ERIC BISSELL
425.450.1121
eric.bissell@kidder.com

BRAD BISSELL
425.450.1182
brad.bissell@kidder.com

KIDDER.COM

This information supplied herein is from sources we deem reliable. It is provided without any representation, warranty, or guarantee, expressed or implied as to its accuracy. Prospective Buyer or Tenant should conduct an independent investigation and verification of all matters deemed to be material, including, but not limited to, statements of income and expenses. Consult your attorney, accountant, or other professional advisor. All Kidder Mathews designs are the sole property of Kidder Mathews. Branded materials and layouts are not authorized for use by any other firm or person.

