

# FOR LEASE

23969 NE SR-3  
Belfair, WA 98528

verizon

SAFeway

STARBUCKS



## NEW LEASE RATES!



## BELFAIR VALLEY PLAZA

Lisa Tallman

First Western Properties—Tacoma Inc. | 253.472.0404  
6402 Tacoma Mall Blvd, Tacoma, WA 98409 | fwp-inc.com

**BELFAIR VALLEY PLAZA** offers strong exposure to steady commuter and tourist traffic between Bremerton and the Olympic Peninsula. This location benefits from convenient access, ample parking, and proximity to key retailers like Safeway, McDonald's, and local businesses, making it ideal for attracting both local residents and pass-through customers.

**AVAILABLE**

- ▶ 4,360 ± SF
- ▶ 23,783 ± SF PAD OPTION
- ▶ 3,600 ± SF WITH DRIVE THRU

- \$22.00 - \$28.00 PSF + NNN
- NNN's are estimated at \$5.00 PSF
- Located on a lighted intersection off State Route 3.
- 42,500 SF Safeway with great exposure to shoppers.
- Grease trap installed.
- Most prominent shopping center in Belfair.



Population



Average HH Income



Daytime Population

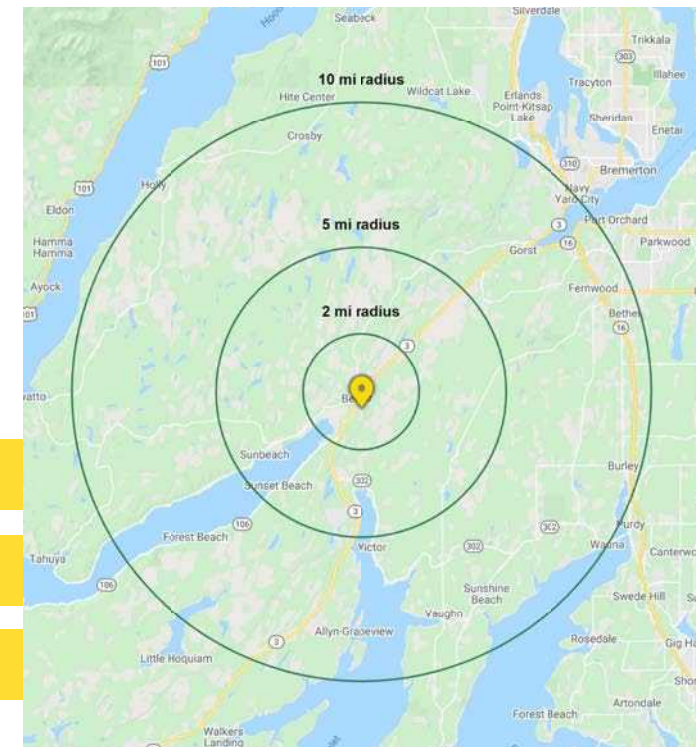
Regis - 2025

	Population	Average HH Income	Daytime Population
Mile 2	3,969	\$110,779	2,517
Mile 5	12,358	\$122,966	7,378
Mile 10	74,852	\$124,465	37,287

**TENANTS**

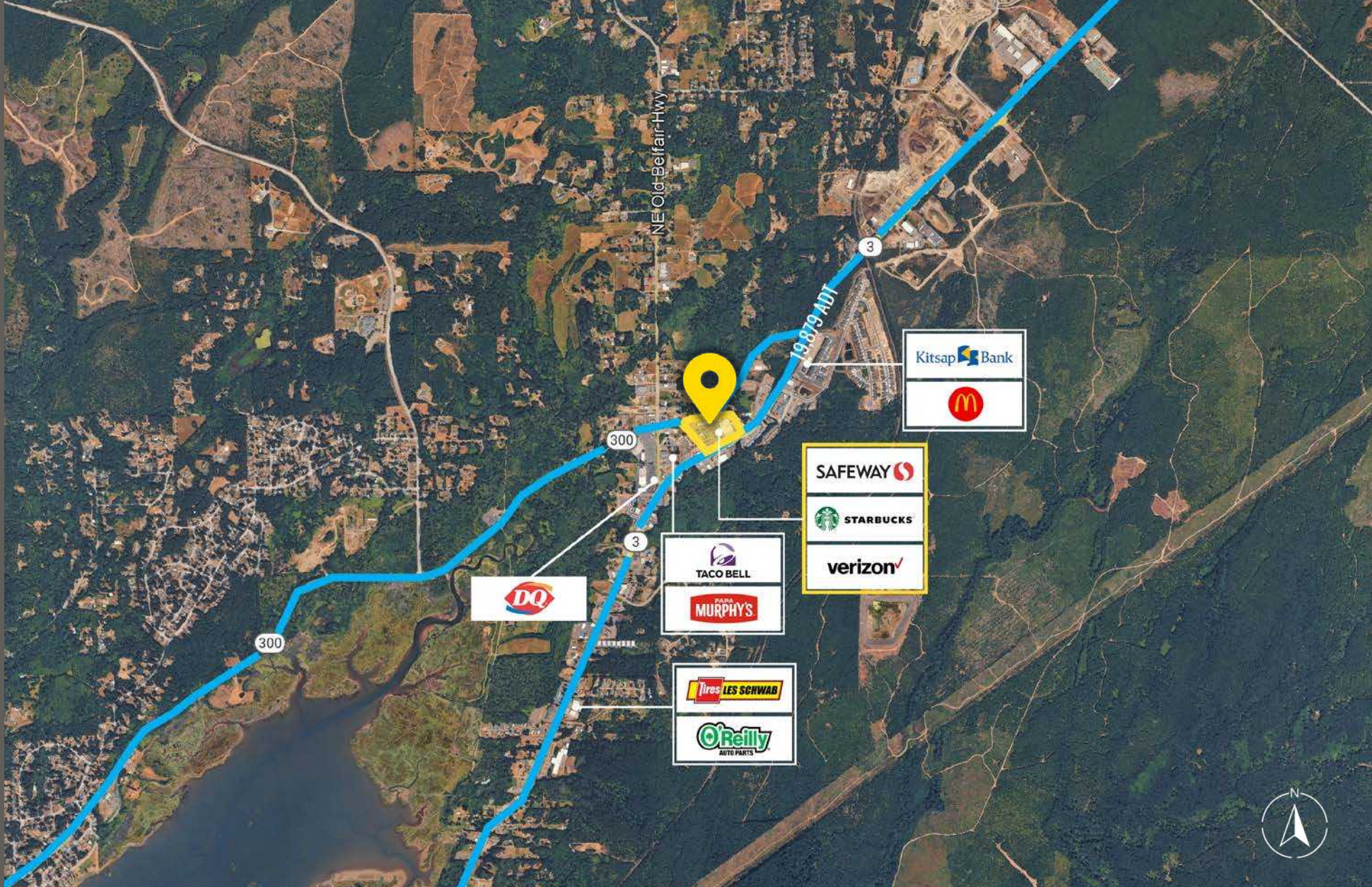


**NEARBY TENANTS**





LOCATION DETAILS



Belfair's Most Prominent Shopping Center

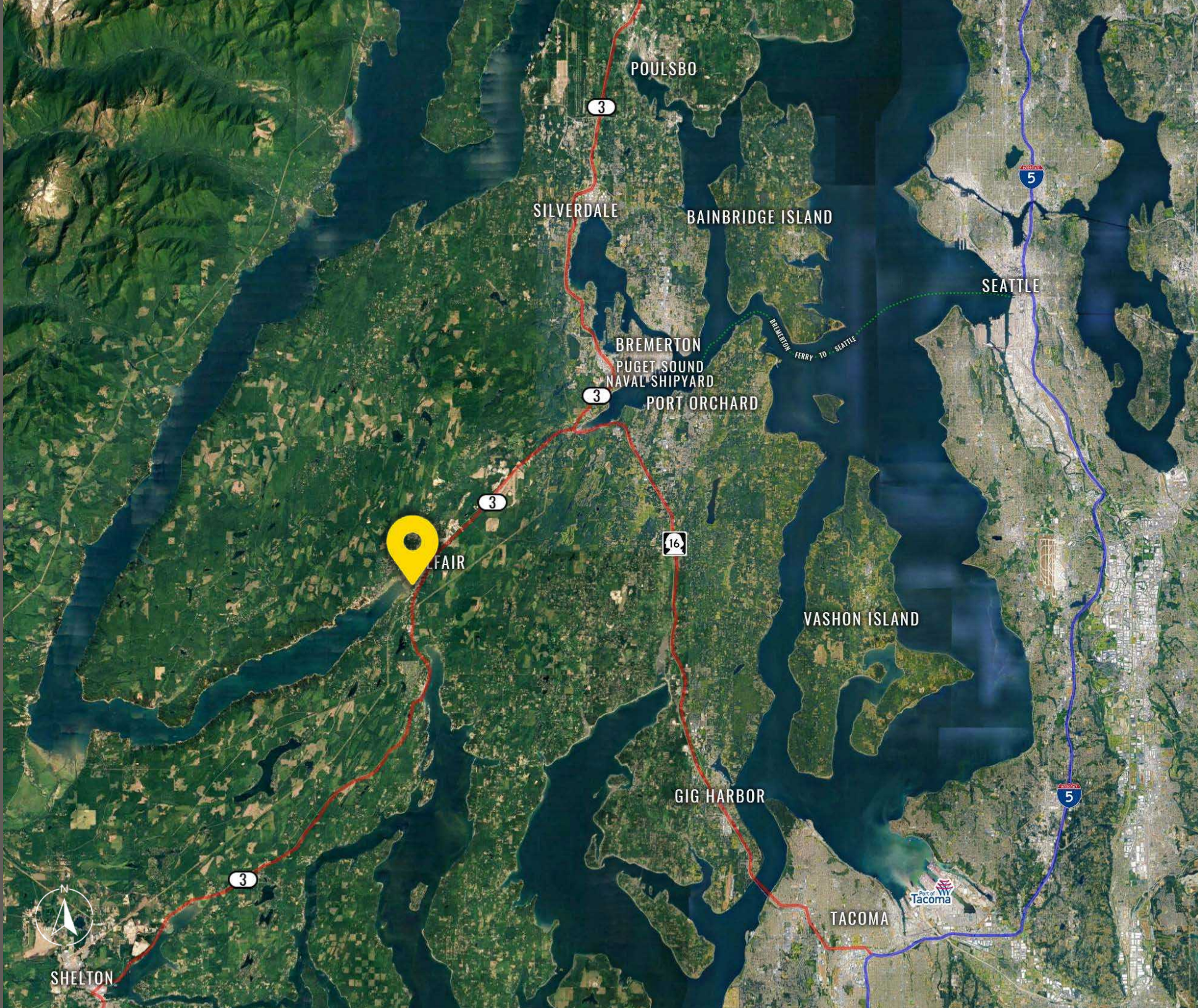


Located 12 minutes from SR-16



19,879 ADT State Route 3

LOCATION AERIAL



# SITE PLAN




Suite	SF	Tenant
Parcel 1		
A	1,320	Teriyaki-Wok
B	1,200	Shumaker Chiropractic
C/D	2,400	El Sombrero
E	1,397	Leased
F	2,210	Verizon
G	1,646	Dominó's Pizza
H	1,200	Cigar Land
I	1,200	Dry Cleaner
J/K	2,520	That One Store
<b>L</b>	<b>4,360</b>	<b>AVAILABLE</b>
<b>Pad 2</b>	<b>23,873 ± / 3,600 ±</b>	<b>AVAILABLE</b>
Pad 3	3,800 ±	Safeway Gas
Pad 4	1,922	Starbucks
Parcel 2	42,500	Safeway




TACOMA | KIRKLAND | PORTLAND | SEATTLE

RELATIONSHIP FOCUSED.  
RESULTS DRIVEN.

LISA TALLMAN

 253.471.5504

 [lisa@firstwesternproperties.com](mailto:lisa@firstwesternproperties.com)

First Western Properties—Tacoma Inc. | 253.472.0404  
6402 Tacoma Mall Blvd, Tacoma, WA 98409 | [fwp-inc.com](http://fwp-inc.com)

© First Western Properties, Inc. DISCLAIMER: The above information has been secured from sources believed to be reliable, however, no representations are made to its accuracy. Prospective tenants or buyers should consult their professional advisors and conduct their own independent investigation. Properties are subject to change in price and/or availability without notice.

