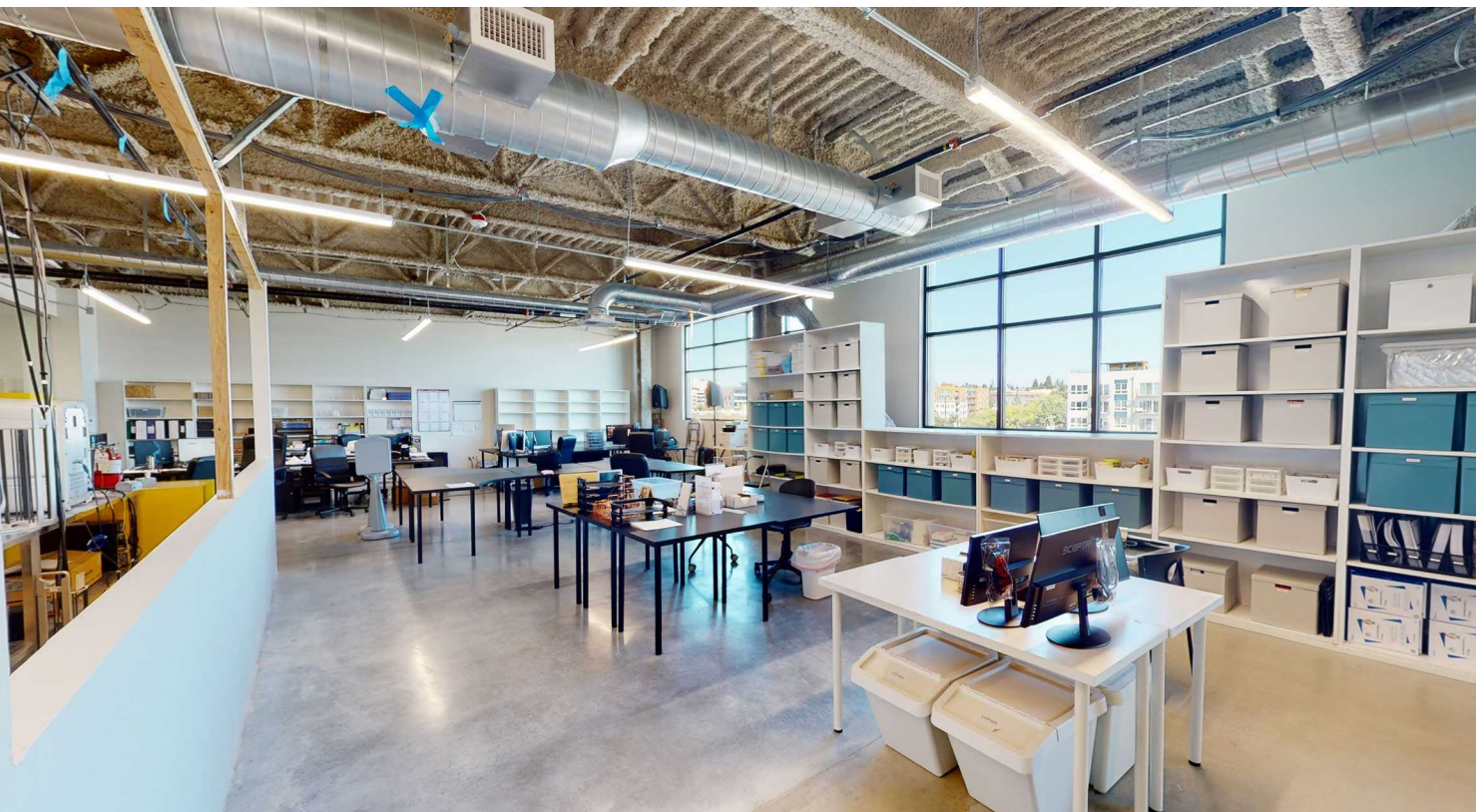


LIFE SCIENCE SUBLEASE: BALLARD

1112 NW 52nd Street | Suite 401 | Seattle, WA 98122



Suite 401:
5,324 SF total



In the heart
of Ballard



Open floor plan with
kitchenette



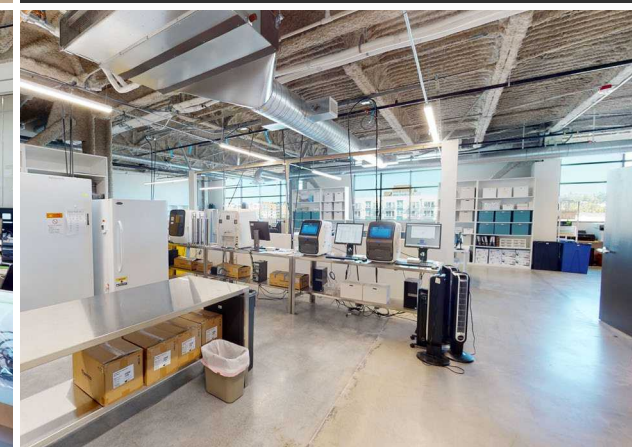
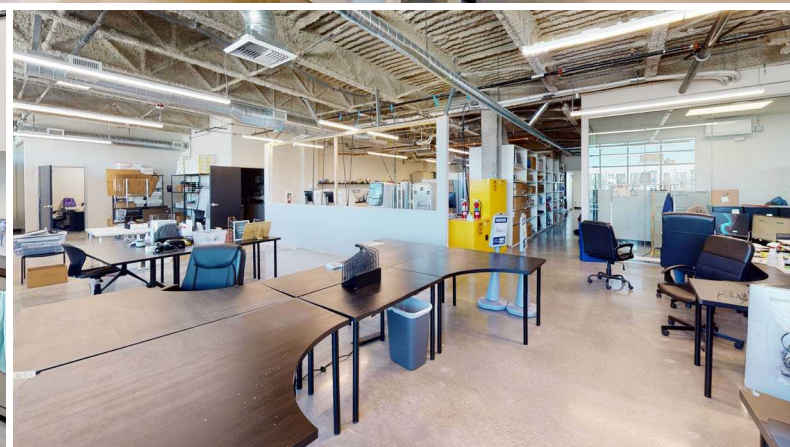
Furniture available



Abundant
natural light



Available now
through February 1, 2028



LIFE SCIENCE SUBLEASE: BALLARD

1112 NW 52nd Street | Suite 401 | Seattle, WA 98122

TAKE A
VIRTUAL
TOUR



KEY:

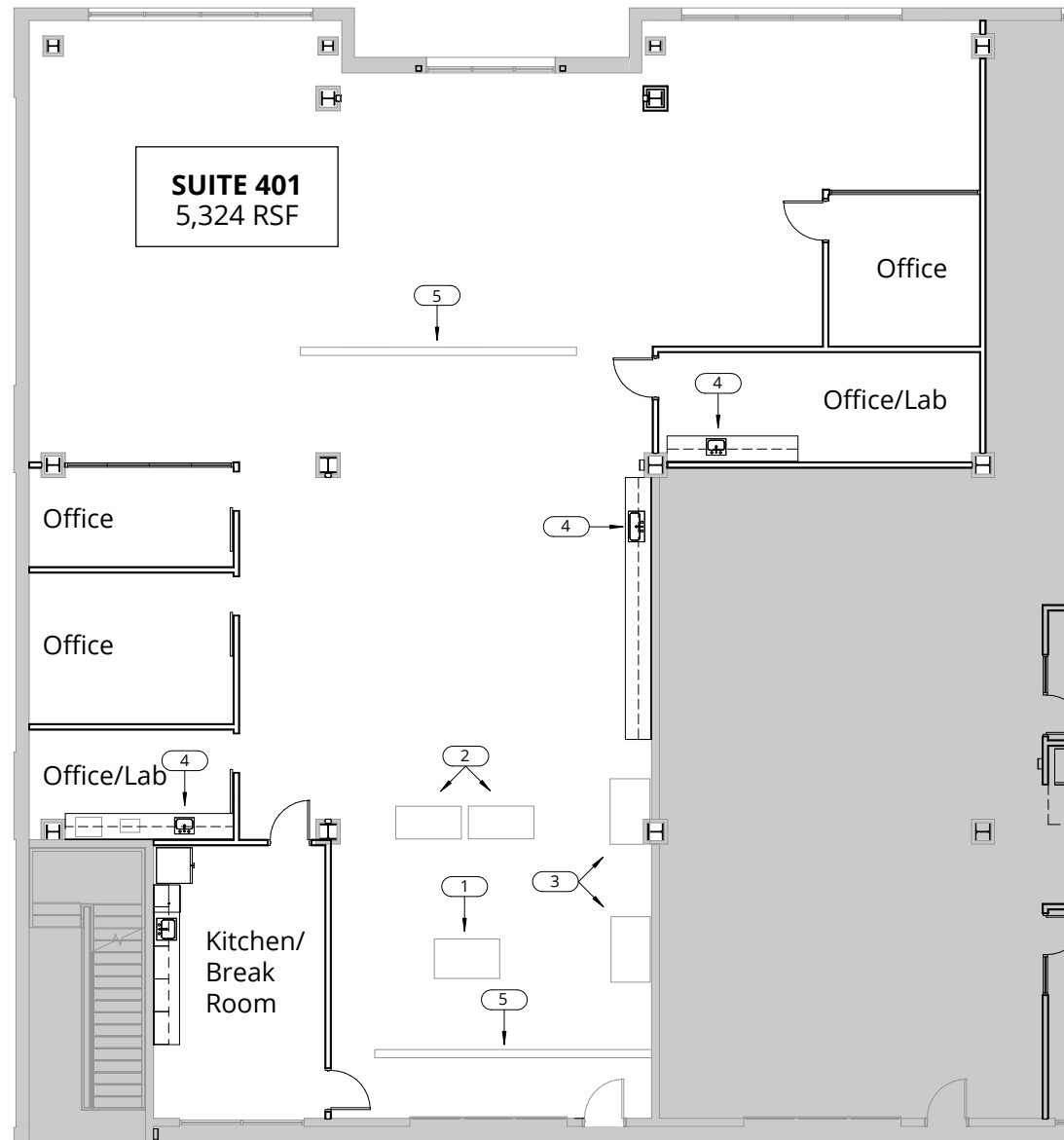
1
Lab Refrigerator
(1)

2
Hamilton Automated
Liquid Handling
Machine
(2)

3
Biological Safety
Cabinet
(2)

4
Lab Sink
(3)

5
Open Partition
(2)



THE PERFECT LOCATION FOR A MODERN WORKFORCE

Situated in the heart of the Seattle's rapidly growing Ballard neighborhood, West Woodland Business Center offers excellent proximity to a host of dining options. Tenants can stroll to historic Ballard Avenue in less than 15 minutes, where they'll find everything they need for a night out after work. Errands can easily be accomplished on the way home, with Amazon Fresh Pickup, PCC and Trader Joe's all located in the neighborhood.



■ Food/Drink ■ Shopping/Grocery ■ Other Amenities



This document has been prepared by Colliers for advertising and general information only. Colliers makes no guarantees, representations or warranties of any kind, express or implied, regarding the information including but not limited to, warranties of content, accuracy and reliability. Any interested party should undertake their own inquiries as to the accuracy of the information. Colliers excludes unequivocally all inferred or implied terms, conditions and warranties arising out of this document and excludes all liability for loss and damages arising therefrom. This publication is the copyrighted property of Colliers and/or its licensor(s). © 2024. All rights reserved.

JOE CONNER
Associate Vice President
Mob +1 425 698 7142
joe.conner@colliers.com

