



# 29700 SE HIGH POINT WAY

FOR LEASE

*A Rare, Stand-Alone 21,500 SF Industrial Building in Issaquah with Visibility to I-90*

29700 SE HIGH POINT WAY | ISSAQUAH, WA

*17,000 SF*  
WAREHOUSE

*4,500 SF*  
OFFICE



*A Rare, Stand-Alone 21,500 SF  
Industrial Building in Issaquah  
with Visibility to I-90*

**PROPERTY DETAILS**

21,500 SF total building area

4,500 SF office + 17,000 SF warehouse

24' clear height, with portion up to 35' clear

4 dock doors, 2 grade-level doors

Sprinklered

Heavy power: 3-phase, 800 amps, 400v

Backup generator pad

33 parking stalls, with additional parking available

Gated property with two points of access to  
SE High Point Way

High-level office finishes

Newly renovated warehouse, new paint and new  
LED lighting

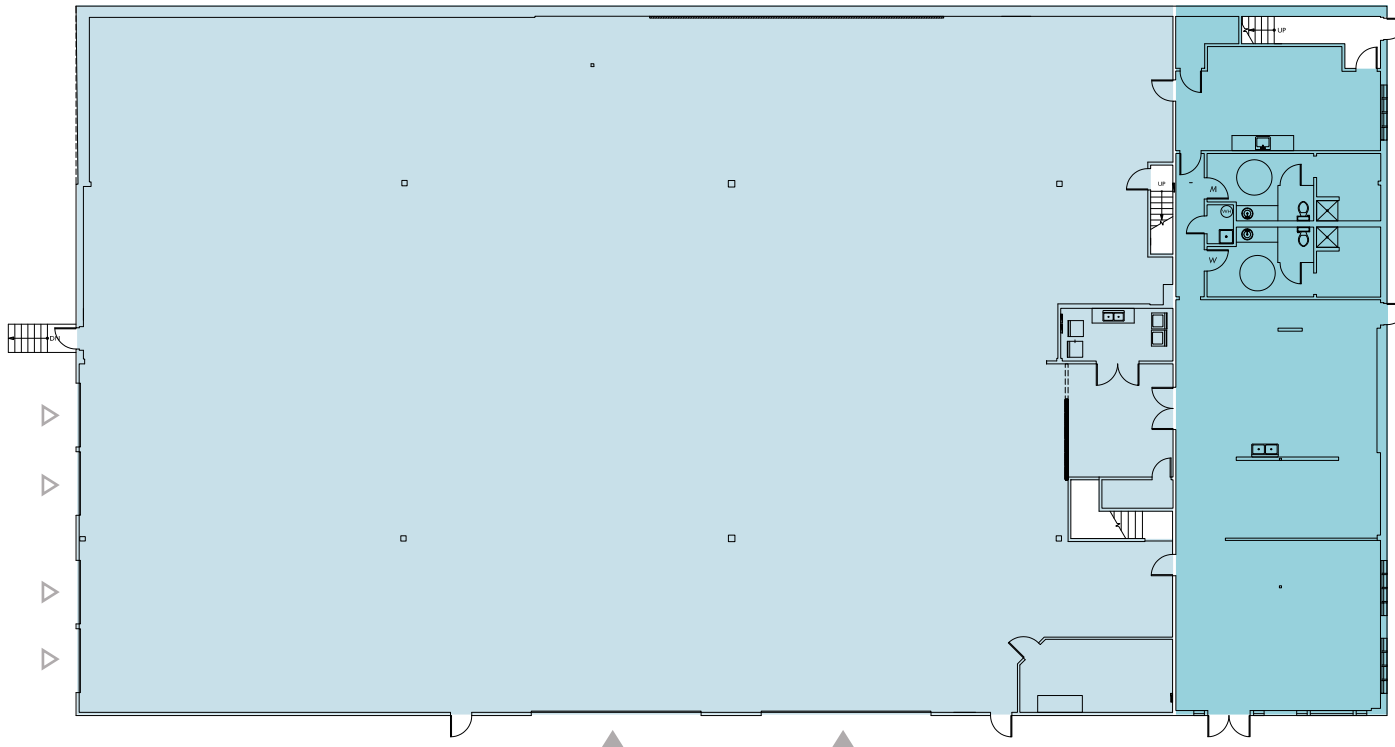
Local, responsive ownership







## FLOOR PLAN



**17,000 SF**

WAREHOUSE

**4,500 SF**

OFFICE

**NOW**

AVAILABLE

*Contact brokers  
for lease rates*

**TODD GAUTHIER**

Executive Vice President

425.450.1118

todd.gauthier@kidder.com

**JASON BLOOM**

Executive Vice President

425.450.1102

jason.bloom@kidder.com

### LEGEND

- ▲ Grade-Level Loading
- △ Dock-High Loading
- Office
- Warehouse





## 29700 SE HIGH POINT WAY

*Exclusively  
Leased by*

**TODD GAUTHIER**  
Executive Vice President  
425.450.1118  
todd.gauthier@kidder.com

**JASON BLOOM**  
Executive Vice President  
425.450.1102  
jason.bloom@kidder.com

**KIDDER.COM**

This information supplied herein is from sources we deem reliable. It is provided without any representation, warranty, or guarantee, expressed or implied as to its accuracy. Prospective Buyer or Tenant should conduct an independent investigation and verification of all matters deemed to be material, including, but not limited to, statements of income and expenses. Consult your attorney, accountant, or other professional advisor. All Kidder Mathews designs are the sole property of Kidder Mathews. Branded materials and layouts are not authorized for use by any other firm or person.

