

Auburn Regional Medical Plaza

121 N Division St, Auburn, WA 98001

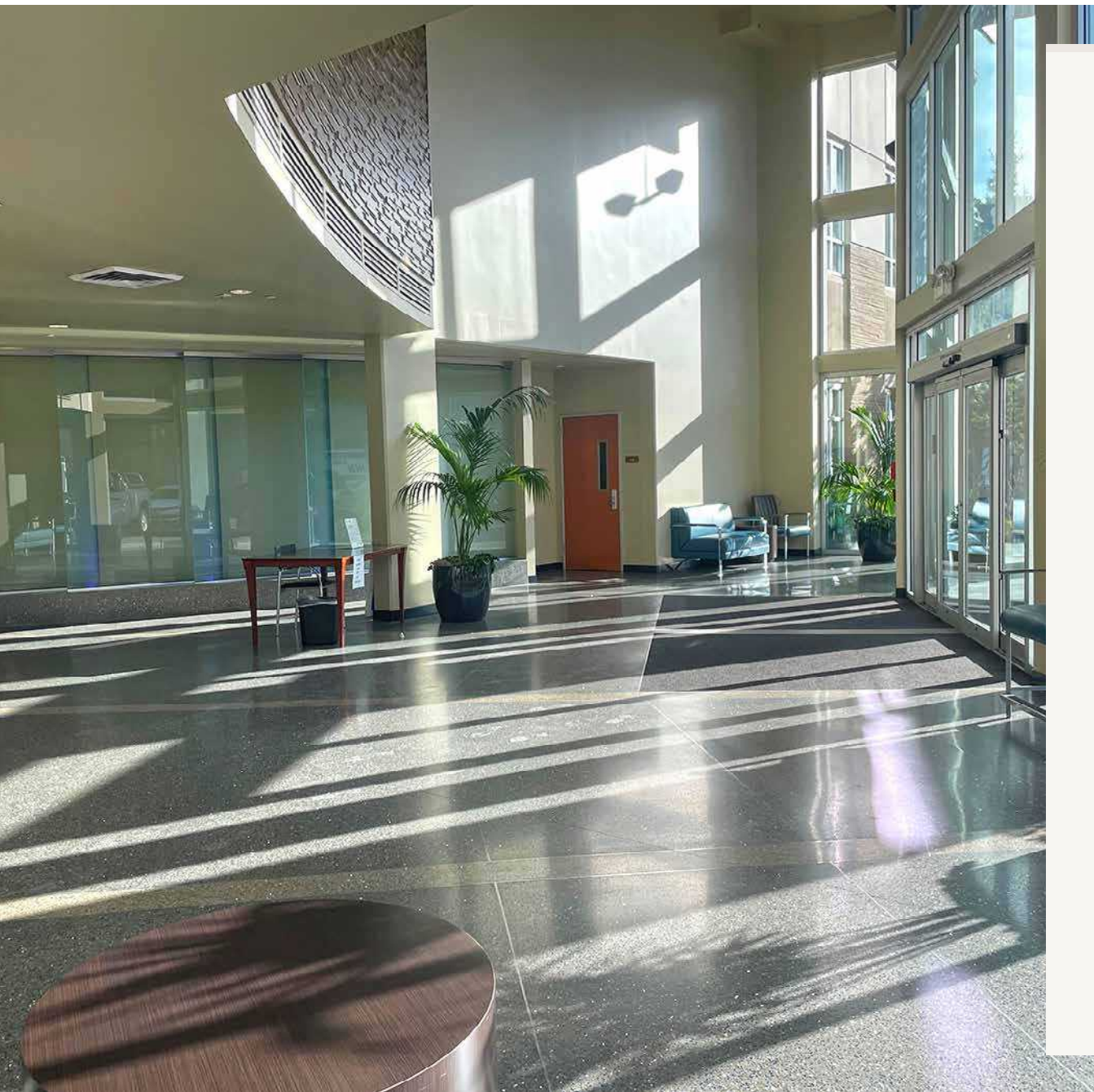


OWNED & MANAGED BY

ANCHOR
HEALTH PROPERTIES

EXCLUSIVELY LEASED BY

km Kidder
Mathews



SUITE INFORMATION

Suite 203: 2,748 RSF

Suite 320: 1,367 RSF

LOCATED

Next to Multi-Care Auburn Medical Center.
Quick access to Highway 167, Highway 18 &
Sunder Station

REPUTABLE TENANTS

Multi-Care's: general surgery, orthopedic
center, hematology/oncology, infusion
services, radiation, sleep center, plastic
reconstruction surgery, sports medicine

PACKAGES AVAILABLE

Tenant improvement packages available

Suite 203 | Test Fit - A



2,748
SQUARE FEET

Inquire
FOR LEASE RATE

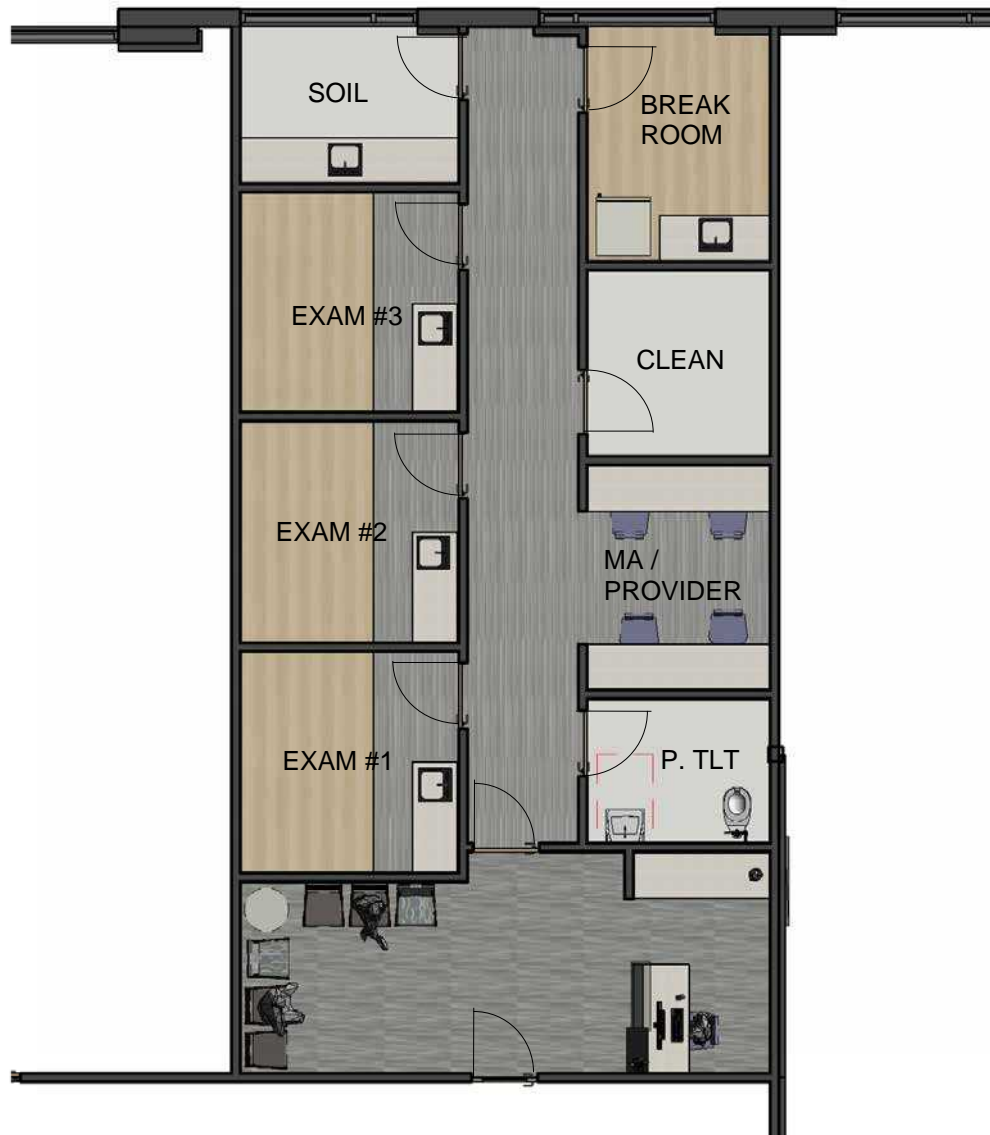
Suite 203 | Test Fit - B



2,748
SQUARE FEET

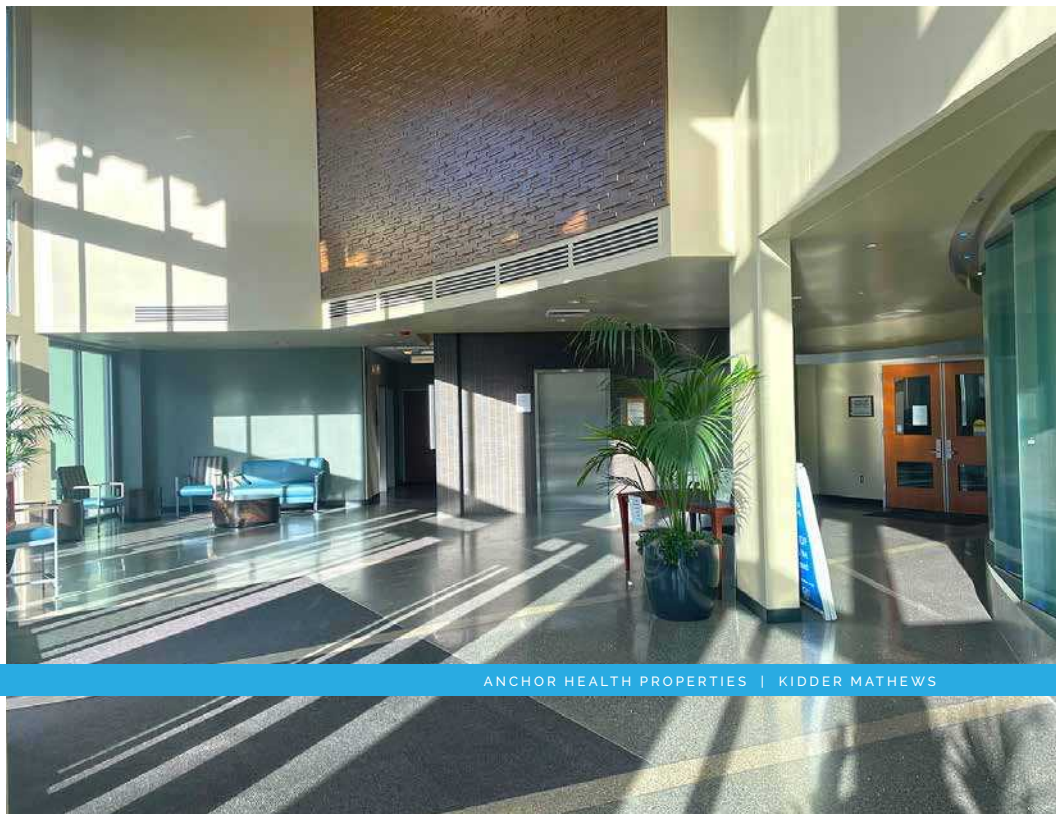
Inquire
FOR LEASE RATE

Suite 320 | Test Fit - A

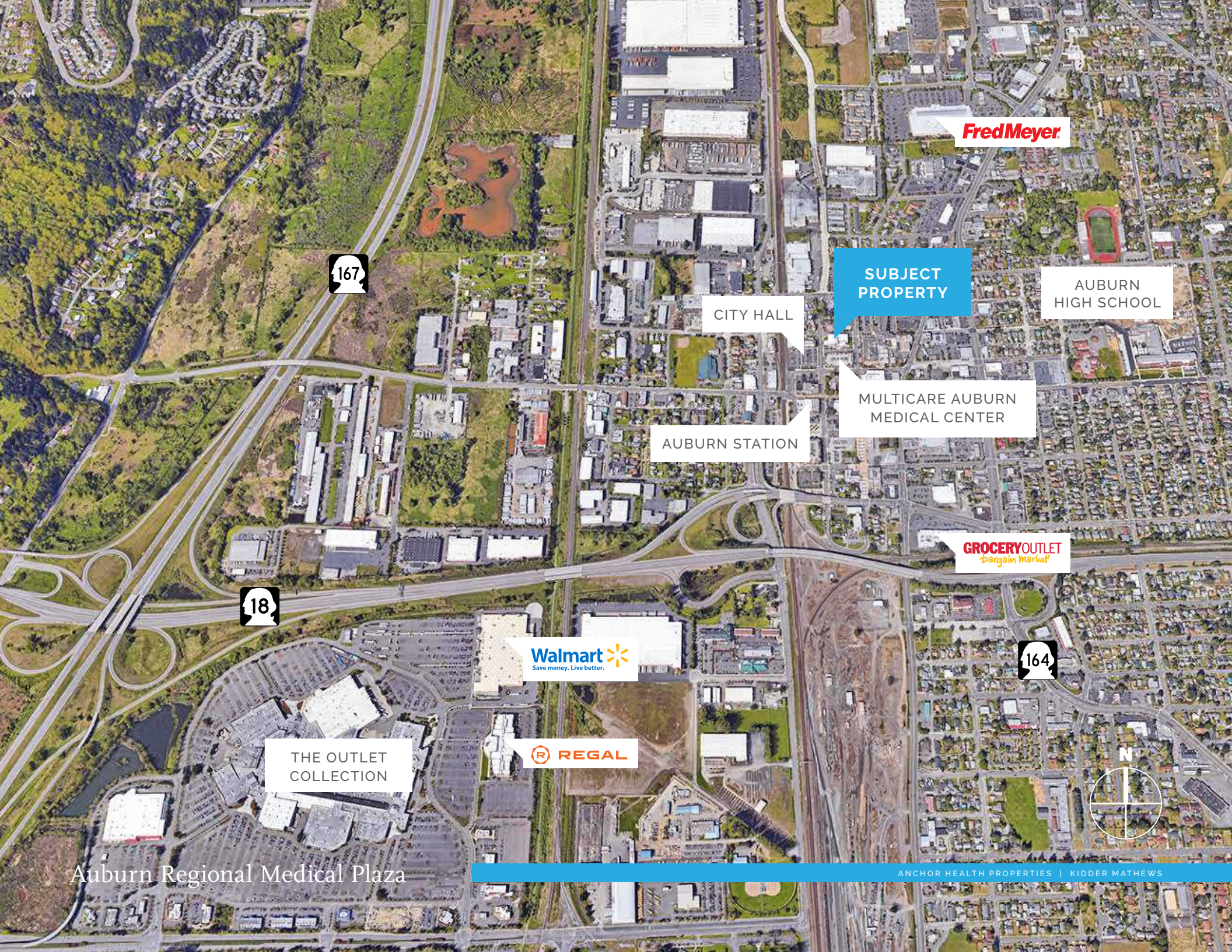


1,367
SQUARE FEET

Inquire
FOR LEASE RATE



Auburn Regional Medical Plaza



Fred Meyer

167

**SUBJECT
PROPERTY**

AUBURN
HIGH SCHOOL

CITY HALL

MULTICARE AUBURN
MEDICAL CENTER

AUBURN STATION

GROCERY OUTLET
Bargain Market

18

Walmart
Save money. Live better.

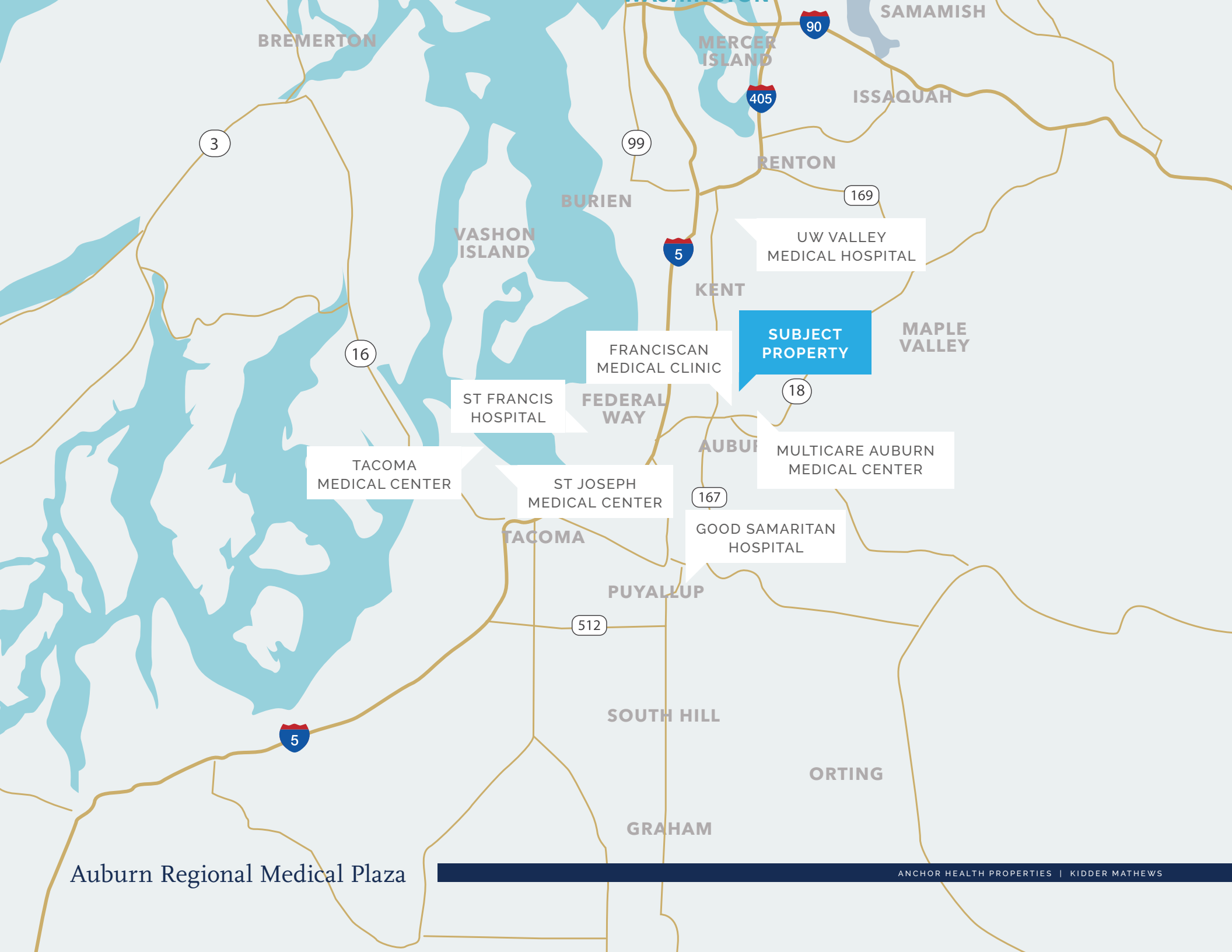
164

REGAL

THE OUTLET
COLLECTION



Auburn Regional Medical Plaza



BREMERTON

MERCER ISLAND

SAMAMISH

ISSAQUAH

RENTON

BURIEN

VASHON ISLAND

KENT

MAPLE VALLEY

FRANCISCAN MEDICAL CLINIC

SUBJECT PROPERTY

ST FRANCIS HOSPITAL

FEDERAL WAY

AUBURN

MULTICARE AUBURN MEDICAL CENTER

TACOMA MEDICAL CENTER

ST JOSEPH MEDICAL CENTER

GOOD SAMARITAN HOSPITAL

TACOMA

PUYALLUP

SOUTH HILL

ORTING

GRAHAM

Auburn Regional Medical Plaza

ANCHOR HEALTH PROPERTIES | KIDDER MATHEWS

Auburn Regional Medical Plaza

DREW FRAME, SIOR

Senior Vice President

253.948.7032

drew.frame@kidder.com

WILL FRAME

Executive Vice President

253.948.6895

will.frame@kidder.com

JOEL SHABEL

Vice President

253.722.1406

joel.shabel@kidder.com

KIDDER.COM

This information supplied herein is from sources we deem reliable. It is provided without any representation, warranty, or guarantee, expressed or implied as to its accuracy. Prospective Buyer or Tenant should conduct an independent investigation and verification of all matters deemed to be material, including, but not limited to, statements of income and expenses. Consult your attorney, accountant, or other professional advisor.



OWNED & MANAGED BY

ANCHOR
HEALTH PROPERTIES

EXCLUSIVELY LEASED BY

km Kidder
Mathews