

For Lease

COURT HOUSE SQUARE

1102 A STREET
TACOMA, WA



km Kidder
Mathews

Court House Square

Located on bustling A Street, Court House Square provides premier walkability to the most sought after retail, restaurants, and bars in Downtown Tacoma.

Much more than a post office, Court House Square holds two restaurants, a coffee shop, two 2,000 sq. ft. event venues, a historic courtroom, and dozens of local businesses. We are proud to be a part of Downtown Tacoma's budding retail scene and boast some of the most unique and affordable office spaces.

COURT
HOUSE
SQUARE

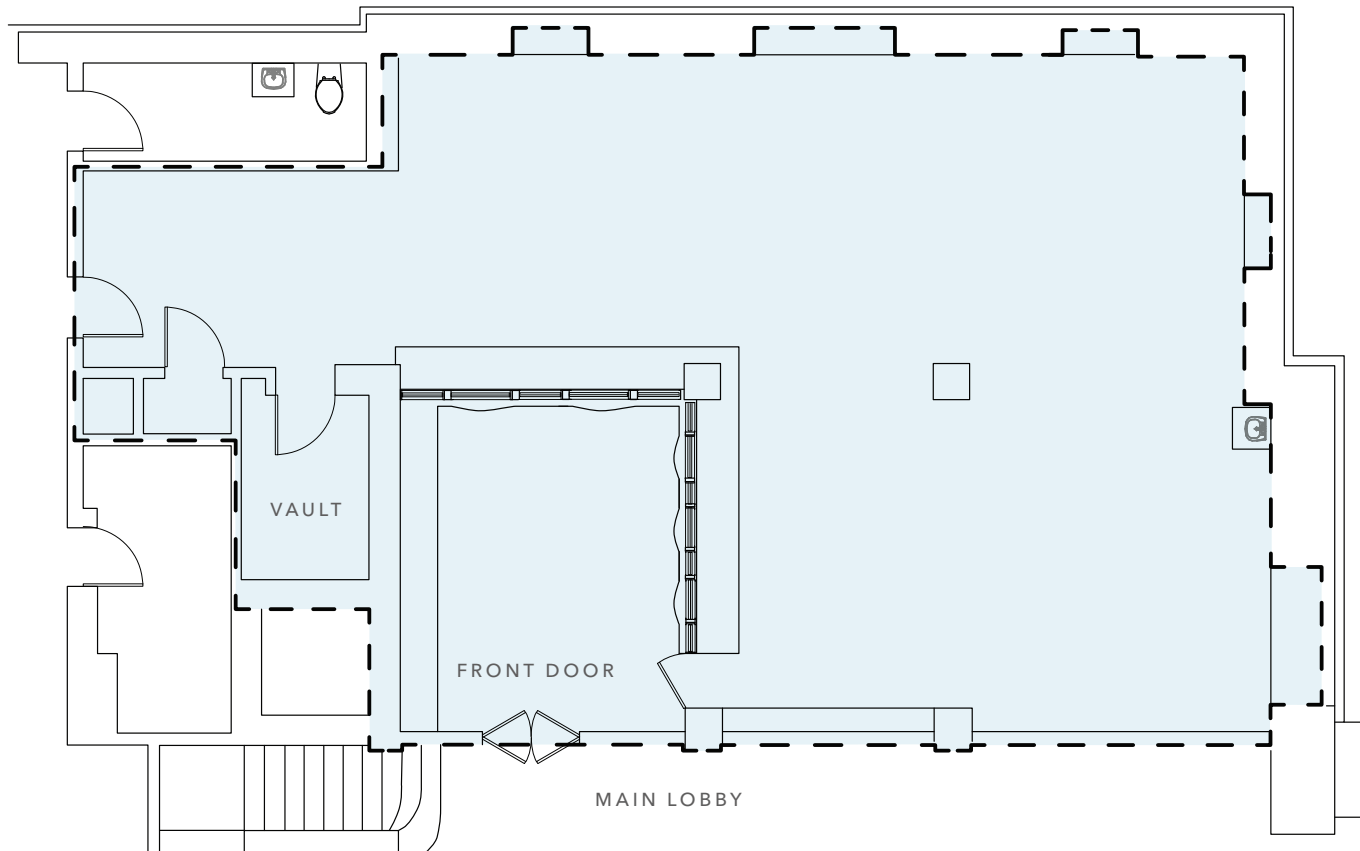
E 12TH ST

AVAILABLE FOR LEASE



KIDDER MATHEWS

SUITE 210



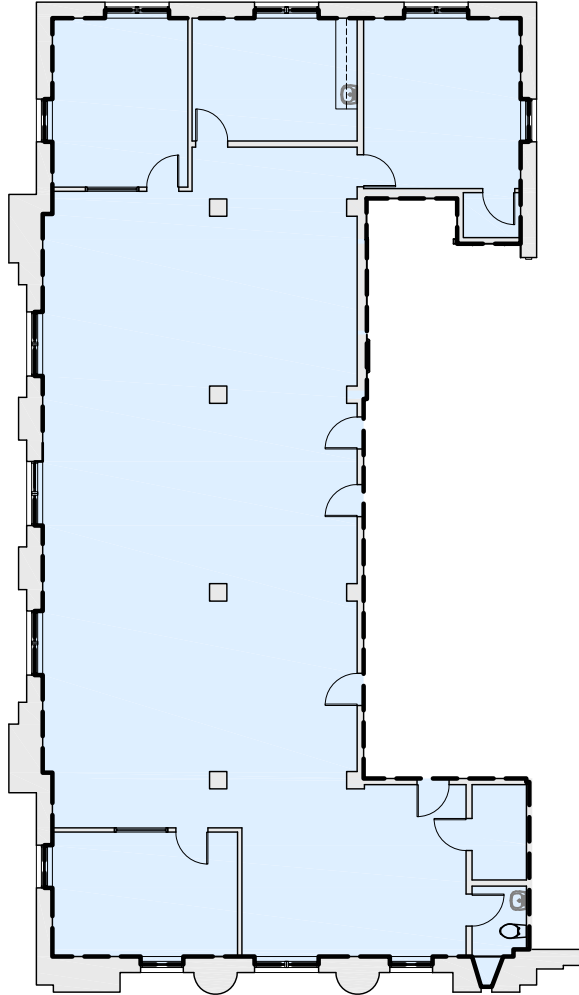
2,463SF

AVAILABLE

\$26.00

PSF, FULL SERVICE

SUITE 300



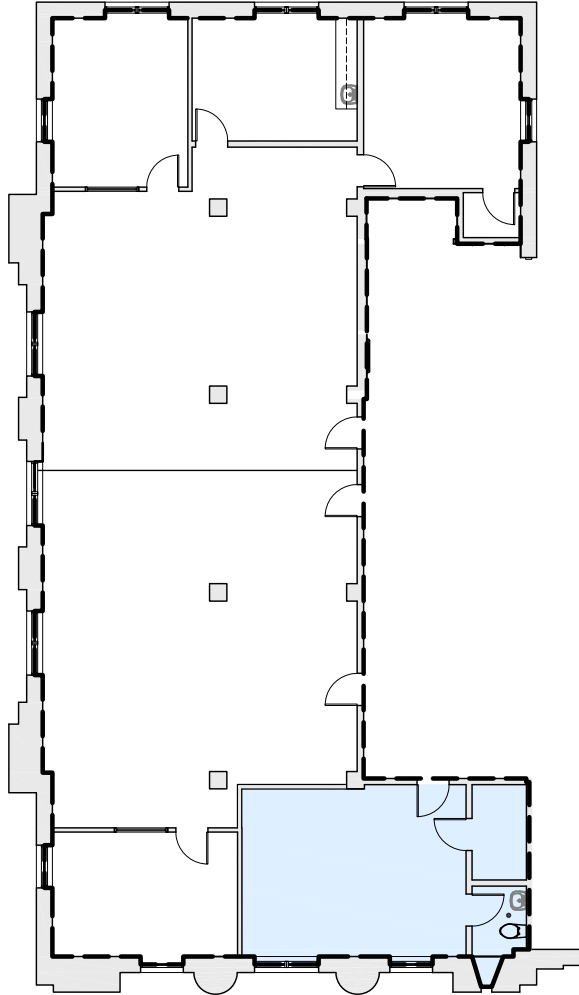
4,153 SF

AVAILABLE

\$26.00

PSF, FULL SERVICE

SUITE 325



280 SF

AVAILABLE

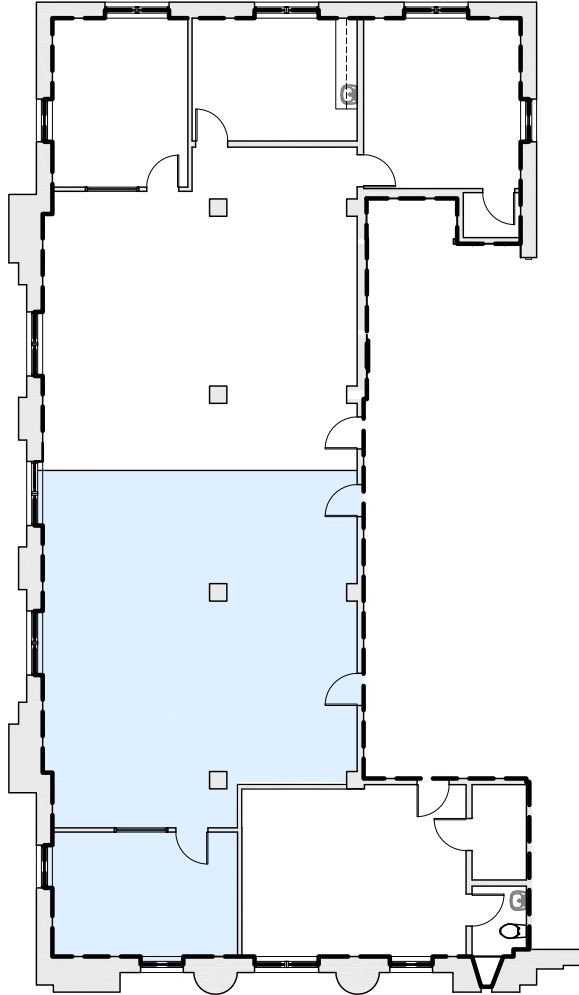
\$850

PER MONTH, FULL SERVICE

\$36.43

PSF, FULL SERVICE

SUITE 326



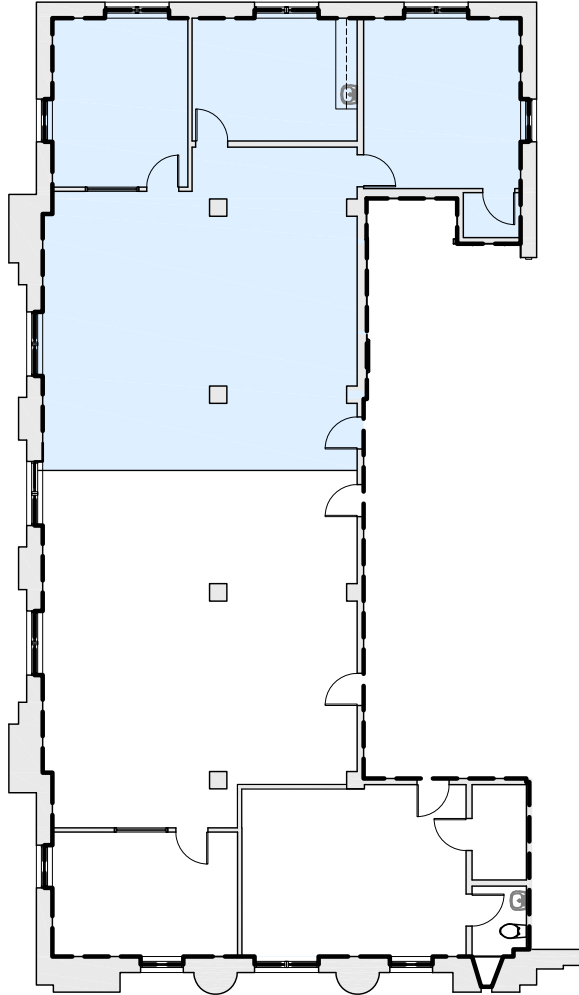
2,475 SF

AVAILABLE

\$26.00

PSF, FULL SERVICE

SUITE 328



2,650 SF

AVAILABLE

\$26.00

PSF, FULL SERVICE

HIGHLY- ACCESSIBLE LOCATION IN DOWNTOWN TACOMA

Close proximity to popular suburbs

Immediate access to I-705 & I-5

The location your employees would covet
and clients would appreciate

From coffee to cocktails & dinner,
Court House Square has it all

40 MIN **15 MIN**
SEATTLE & BELLEVUE CBD GIG HARBOR





NEARBY AMENITIES

RESTAURANTS & BARS

- 01 Steel Creek Tacoma
- 02 Mexico Magico
- 03 Fujiya Japanese Restaurant
- 04 Happy Belly
- 05 Galanga Thai Cuisine
- 06 The Old Spaghetti Factory
- 07 Infinite Soups
- 08 Unique Baker
- 09 The Firwood Rock Lounge
- 10 The Deltan Club
- 11 Cans
- 12 Odd Otter Brewing Company
- 13 Encore

GROCERIES & SHOPS

- 01 The Broadway Farmers Market
- 02 Terra Organics LLC
- 03 Safeway
- 04 M&H Market
- 05 Stadium Thriftway
- 06 Abby's On Broadway
- 07 Absolutely Flowers
- 08 Next To Nature
- 09 Art Shop
- 10 Tollefson Plaza
- 11 Johnson Candy Company
- 12 Black Door Wine Company
- 13 Handy Mart

SCHOOLS

- 01 Tacoma School of the Arts
- 02 Bates Technical College
- 03 Community Montessori
- 04 McCarver
- 05 NW School of Innovative
- 06 Stanley

RECREATION & PARKS

- 01 Fireman's Park
- 02 Neighbors Park
- 03 Peoples Park
- 04 Wright Park
- 05 McCarver Park
- 06 Stanley Part

COURT HOUSE SQUARE

EXCLUSIVELY LEASED BY

DREW FRAME, SIOR
Kidder Mathews
253.948.7032
drew.frame@kidder.com

WILL FRAME
Kidder Mathews
253.948.6895
will.frame@kidder.com

RYAN KERSHAW
Kidder Mathews
206.949.1334
ryan.kershaw@kidder.com

This information supplied herein is from sources we deem reliable. It is provided without any representation, warranty, or guarantee, expressed or implied as to its accuracy. Prospective Buyer or Tenant should conduct an independent investigation and verification of all matters deemed to be material, including, but not limited to, statements of income and expenses. Consult your attorney, accountant, or other professional advisor.

