

FOR LEASE

# RUSSELL HALL

1414 NE 42ND ST  
SEATTLE, WA

KIDDER.COM

**km** Kidder  
Mathews



# LOCATED AT THE UNIVERSITY OF WASHINGTON'S DOORSTEP—ENJOY A *VIBRANT* NEIGHBORHOOD WITH ABUNDANT AMENITIES





#### PROPERTY HIGHLIGHTS

High ceiling and plentiful natural light

Rooftop garden with downtown and Lake Union views

2/1,000 SF parking on site

Showers and bike storage

LEED Gold

Two blocks to U District LINK station

Available immediately

Furniture available

Rent ready space available

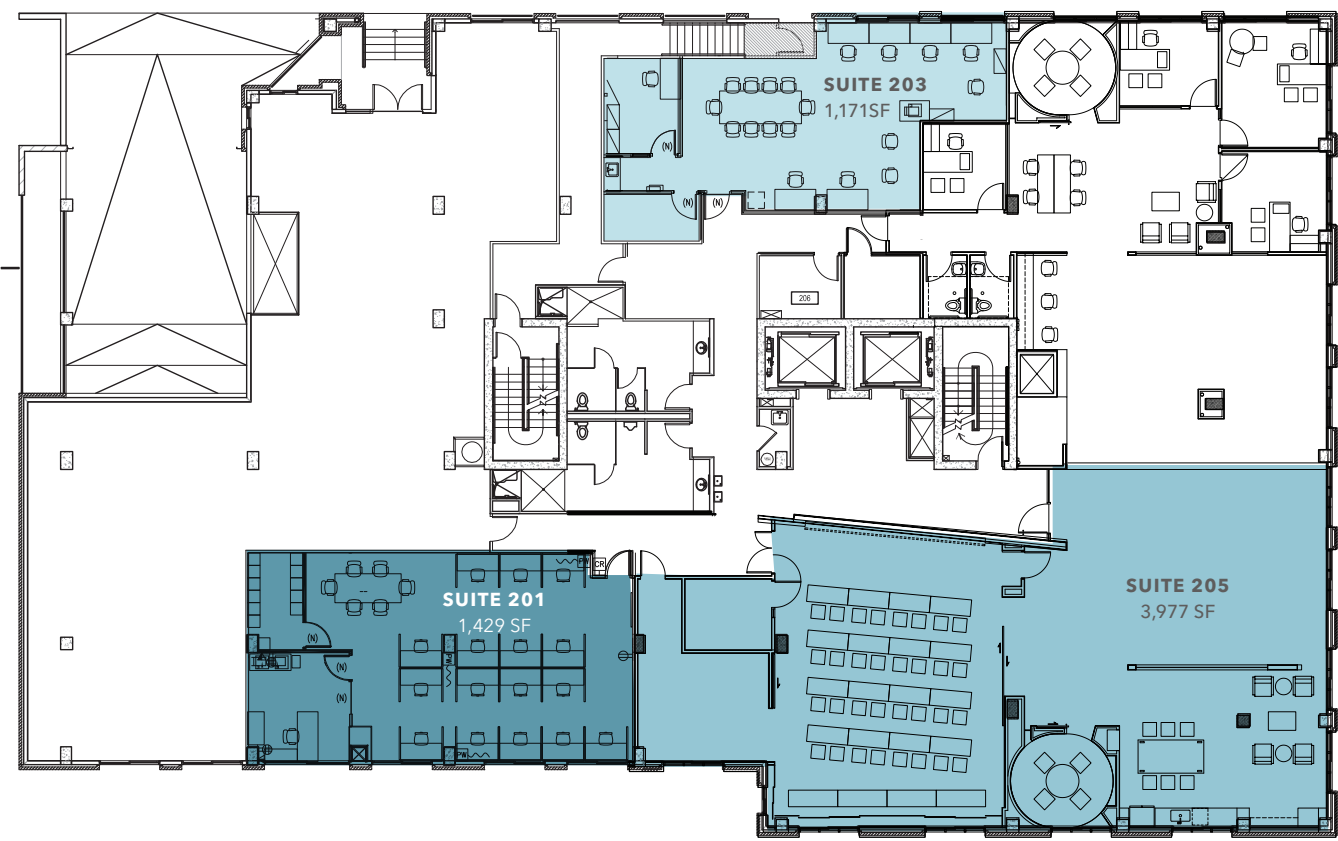
98

WALK SCORE

84

TRANSIT SCORE

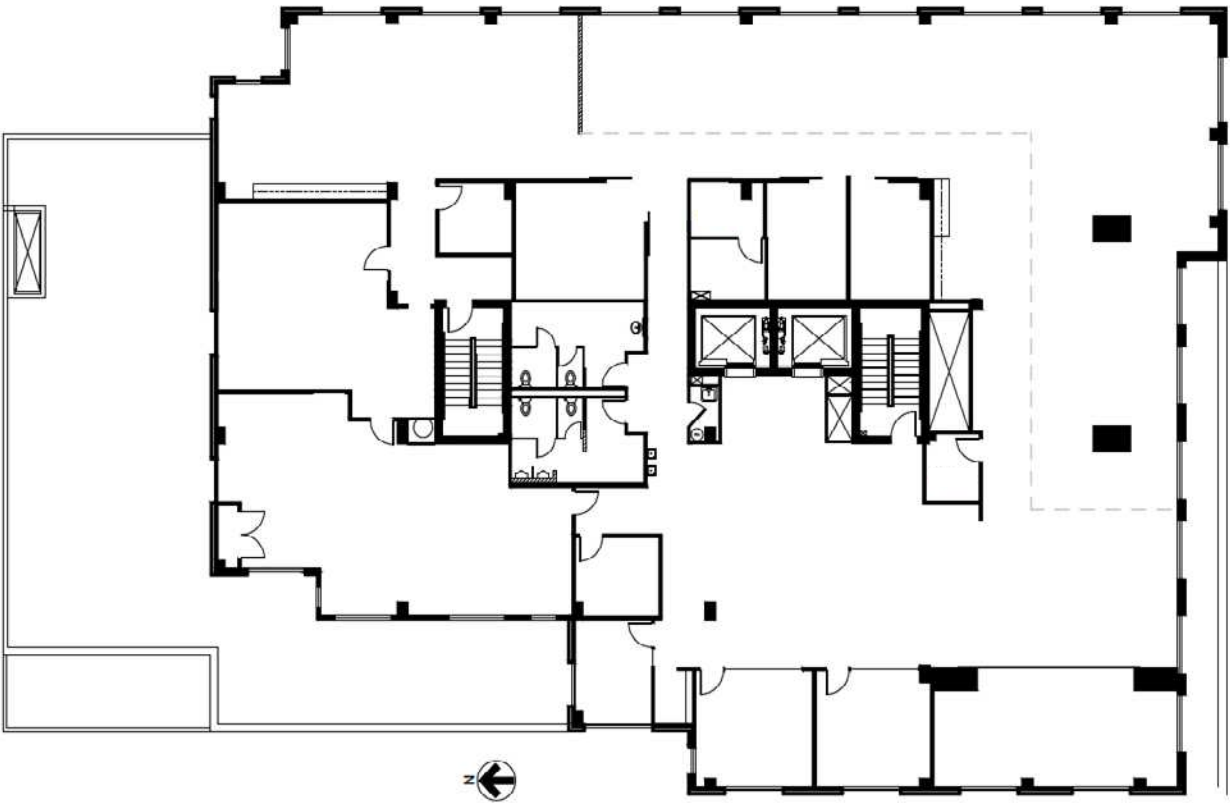
# SECOND FLOOR PLAN



## AVAILABILITIES

Suite	Size	Available	Virtual Tour
Suite 201	1,429 SF	Now	<a href="#">View Tour</a>
Suite 203	1,171 SF	Now	<a href="#">View Tour</a>
Suite 205	3,977 SF	Now	<a href="#">View Tour</a>

# FOURTH FLOOR PLAN



## AVAILABILITIES

Suite	Size	Available
Suite 400	11,136 SF	30 days notice



# RUSSELL HALL

*For more information on  
this property, please contact*

DAVID GURRY  
206.931.6474  
david.gurry@kidder.com

DAN DAHL  
206.650.6154  
dan.dahl@kidder.com

[KIDDER.COM](https://www.kidder.com)

This information supplied herein is from sources we deem reliable. It is provided without any representation, warranty, or guarantee, expressed or implied as to its accuracy. Prospective Buyer or Tenant should conduct an independent investigation and verification of all matters deemed to be material, including, but not limited to, statements of income and expenses. Consult your attorney, accountant, or other professional advisor.

