

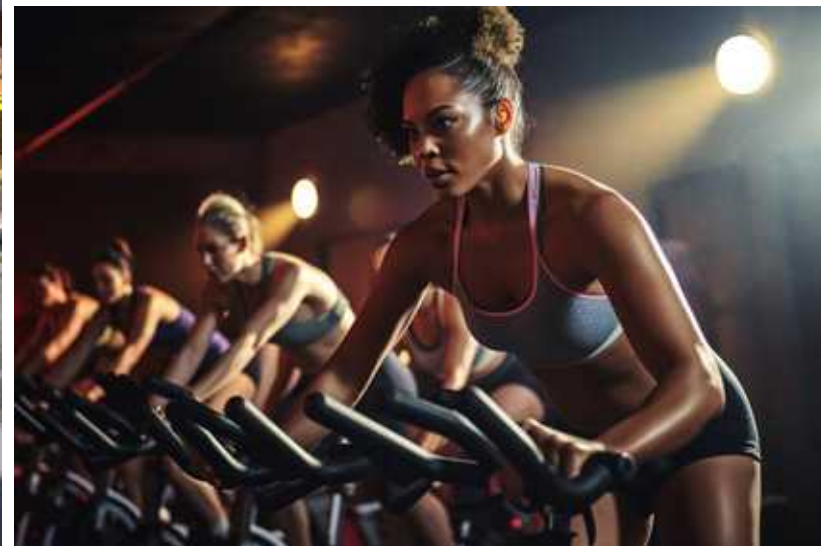




## EXTRAORDINARY SPACES FOR EVERYDAY LIFE

Hilite offers a vibrant blend of convenience and creativity right at the heart of Seattle's eclectic neighborhoods. Nestled between Atlantic, Central District, and Judkins Park, the pet-friendly environment is a stone's throw from Capitol Hill and provide a live/work space for healthcare professionals and food enthusiasts alike.

**5,000 SF OF COMMERCIAL RETAIL SPACE**







Our location is poised for growth with upcoming improvements linked to the Judkins Park Light Rail Station, enhancing connectivity and accessibility. Excellent proximity to green spaces, city parks, and recreational areas, perfect for unwinding or exploring.

Hilite stands out with its distinctive industrial-chic aesthetic, featuring a bold design with three interconnected towers and striking yellow sculptural elements. It's a dynamic, creative hub where you can truly experience Seattle's vibrant community.



94

Walk Score

"Walker's Paradise"



84

Transit Score

"Excellent Transit"



76

Bike Score

"Very Bikeable"

33,124 vehicles per day at Rainier Ave S



**NEAR NEW JUDKINS PARK  
LIGHTRAIL STATION  
(OPENING LATE 2025)**

**622 RAINIER AVE S, SEATTLE WA 98144**





**RETAIL A:** 2,390 SF AVAILABLE



**RETAIL B:** 2,554 SF AVAILABLE

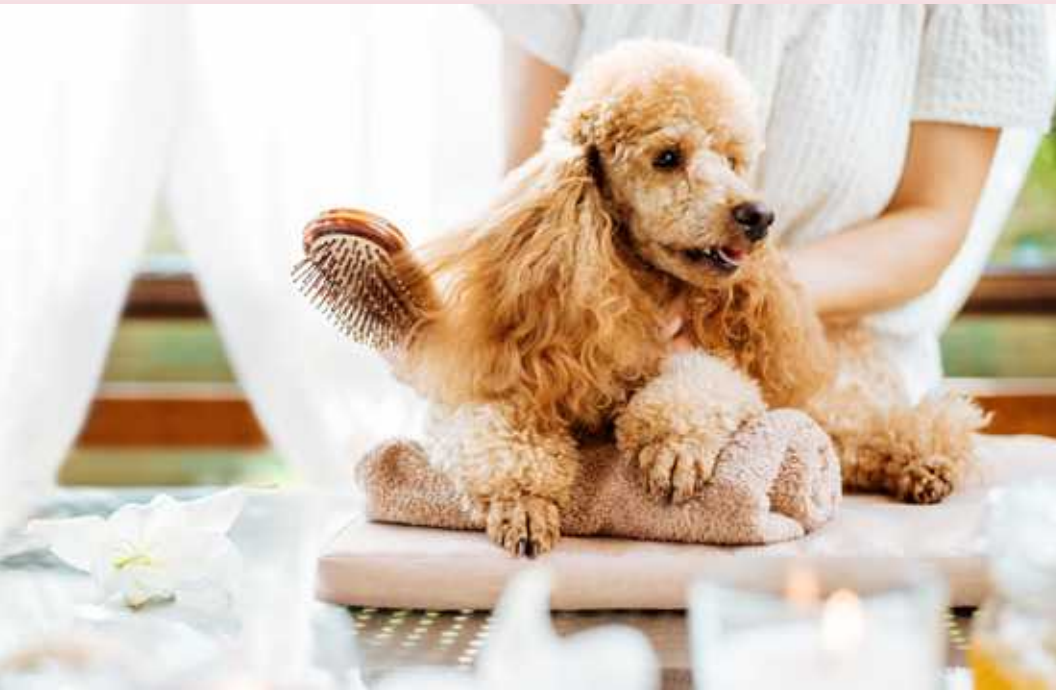
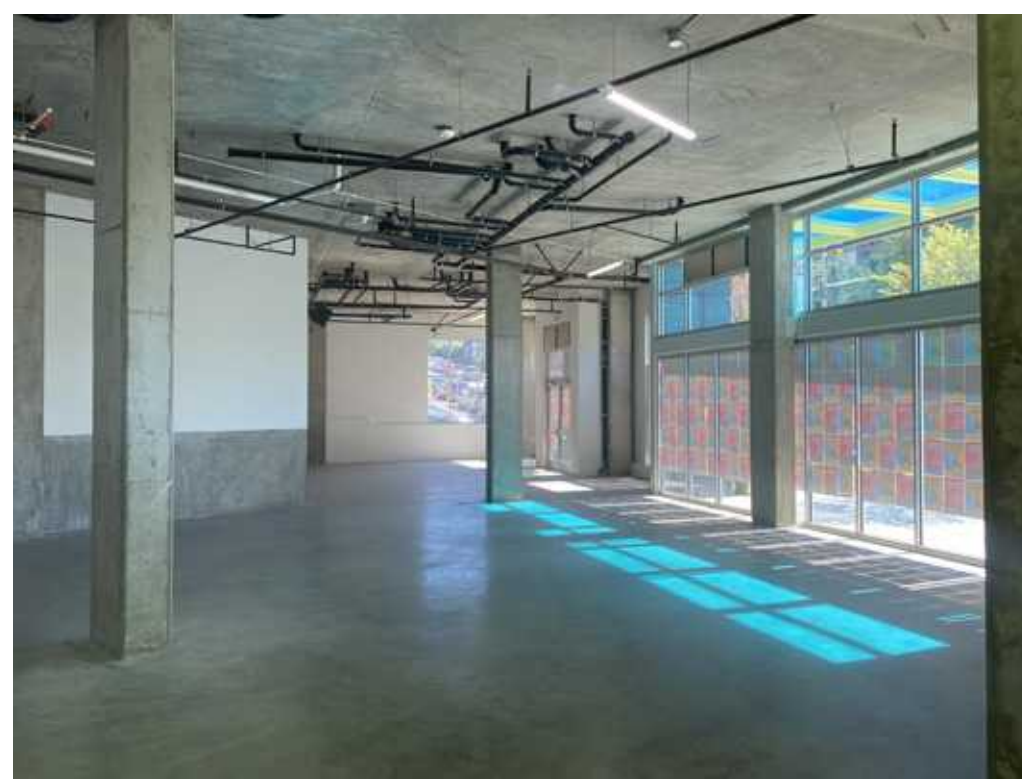
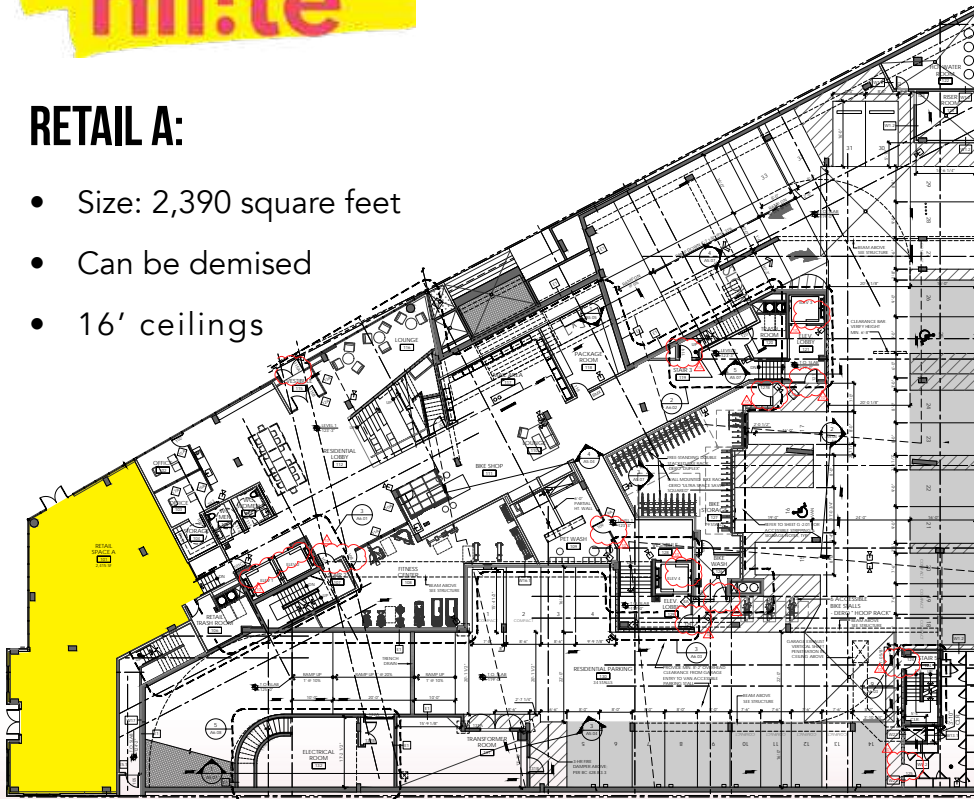






## RETAIL A:

- Size: 2,390 square feet
- Can be demised
- 16' ceilings



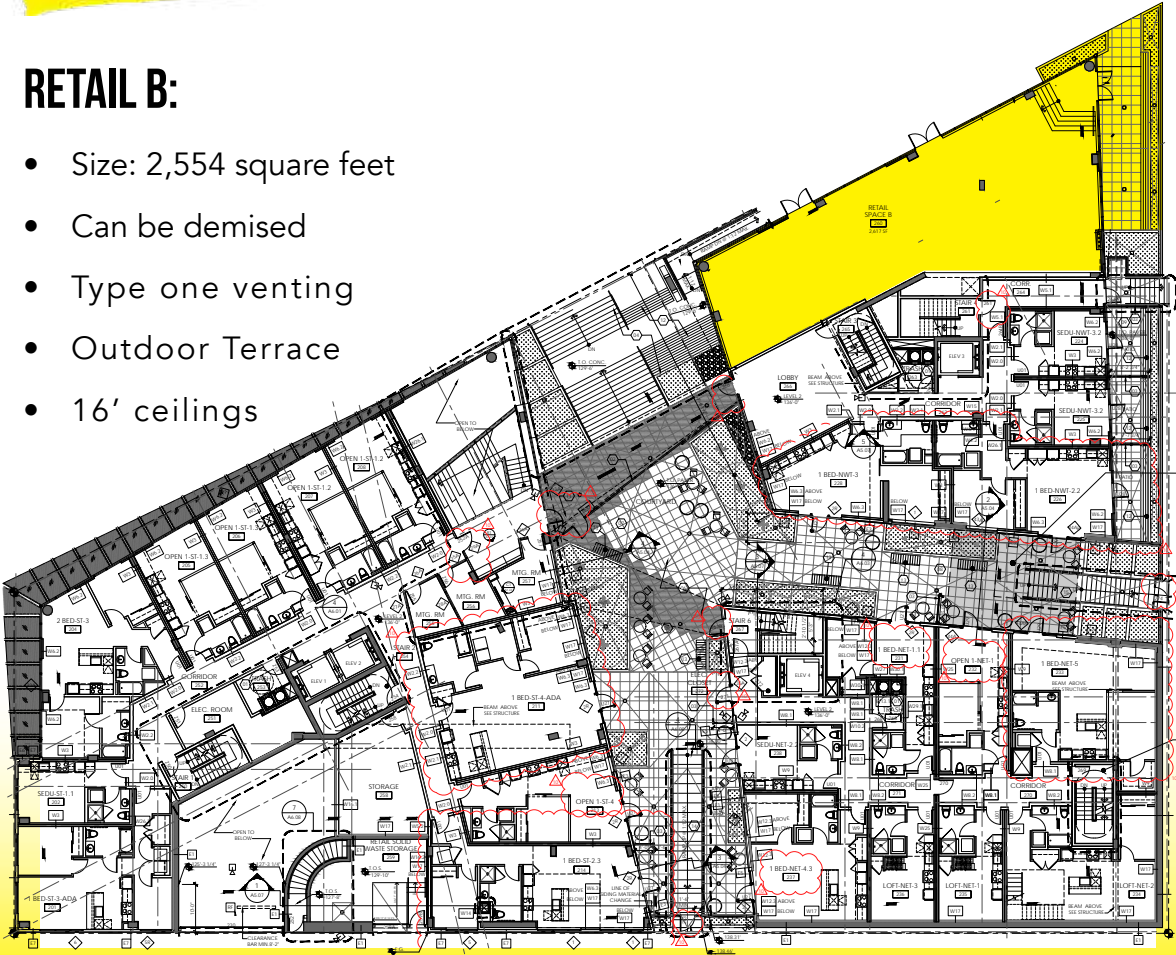
622 RAINIER AVE S, SEATTLE WA 98144



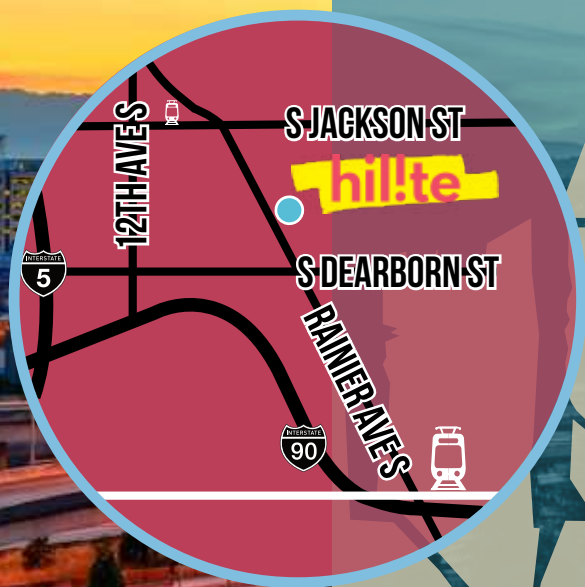
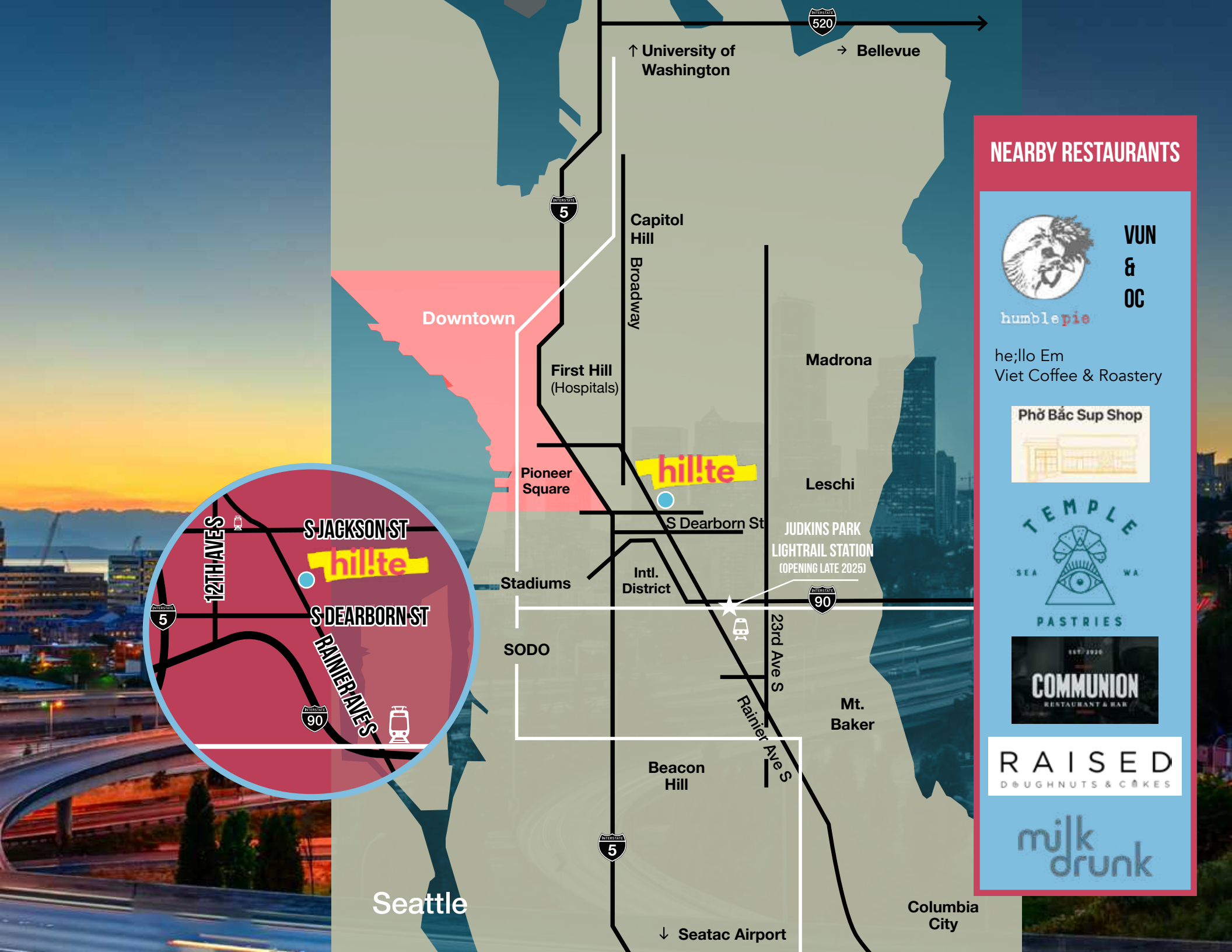


**RETAIL B:**

- Size: 2,554 square feet
- Can be demised
- Type one venting
- Outdoor Terrace
- 16' ceilings







## NEARBY RESTAURANTS



VUN  
&  
OC

humble pie

he;llo Em  
Viet Coffee & Roastery

Phở Bắc Sup Shop



RAISED  
DOUGHNUTS & CAKES

milk  
drunk



622 RAINIER AVE S, SEATTLE WA 98144

**EXTRAORDINARY SPACES FOR  
EVERYDAY LIFE**

**5,000 SF  
OF COMMERCIAL RETAIL SPACE**

Tiffini Connell

tiffini@wccommercialrealty.com

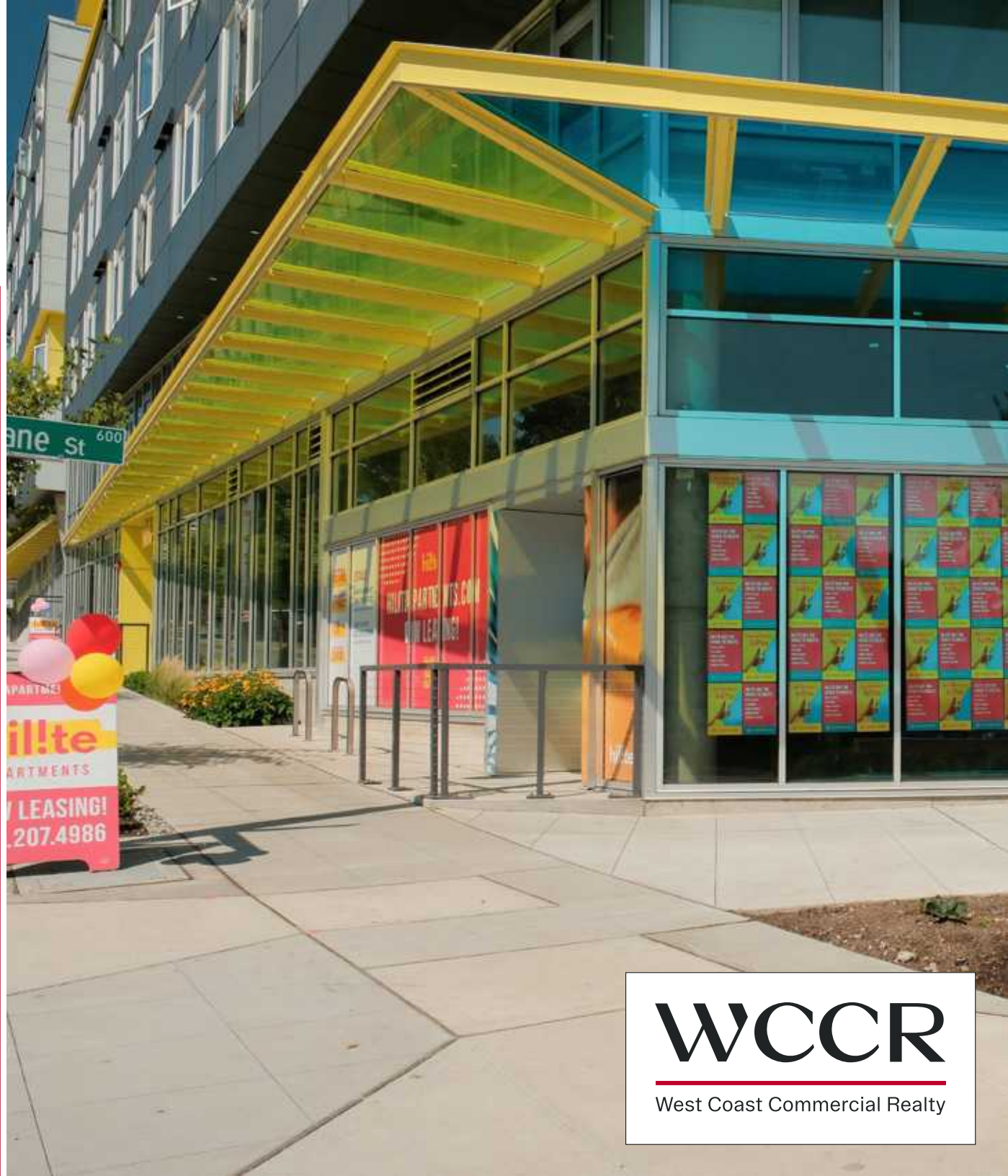
Jennifer Israel

jenniferi@wccommercialrealty.com

**(206) 283-5212**

[www.wccommercialrealty.com](http://www.wccommercialrealty.com)

DISCLAIMER: The above information has been secured from sources believed to be reliable, however, no representations are made to its accuracy. Prospective tenants or buyers should consult their professional advisors and conduct their own independent investigation. Site plan and configuration are subject to change. Properties are subject to change in price and/or availability without notice. West Coast Commercial Realty, LLC



**WCCR**  
West Coast Commercial Realty