



# 1101 PACIFIC OFFICE BUILDING

*Second Floor Office Space  
For Lease*

1101 PACIFIC AVE, TACOMA, WA 98402



# 1101 PACIFIC OFFICE BUILDING

## PROPERTY OVERVIEW

Suite 200: 20,253 SF available

\$21.00 per RSF, full service

KeyBank retail located on the first floor

High ceiling, modern Class A finishes, and furniture can be made available

Superior location on the corner of Pacific Avenue and 11th Street

Easy access to Hwy 705, 509 and I-5

## DEMOGRAPHICS

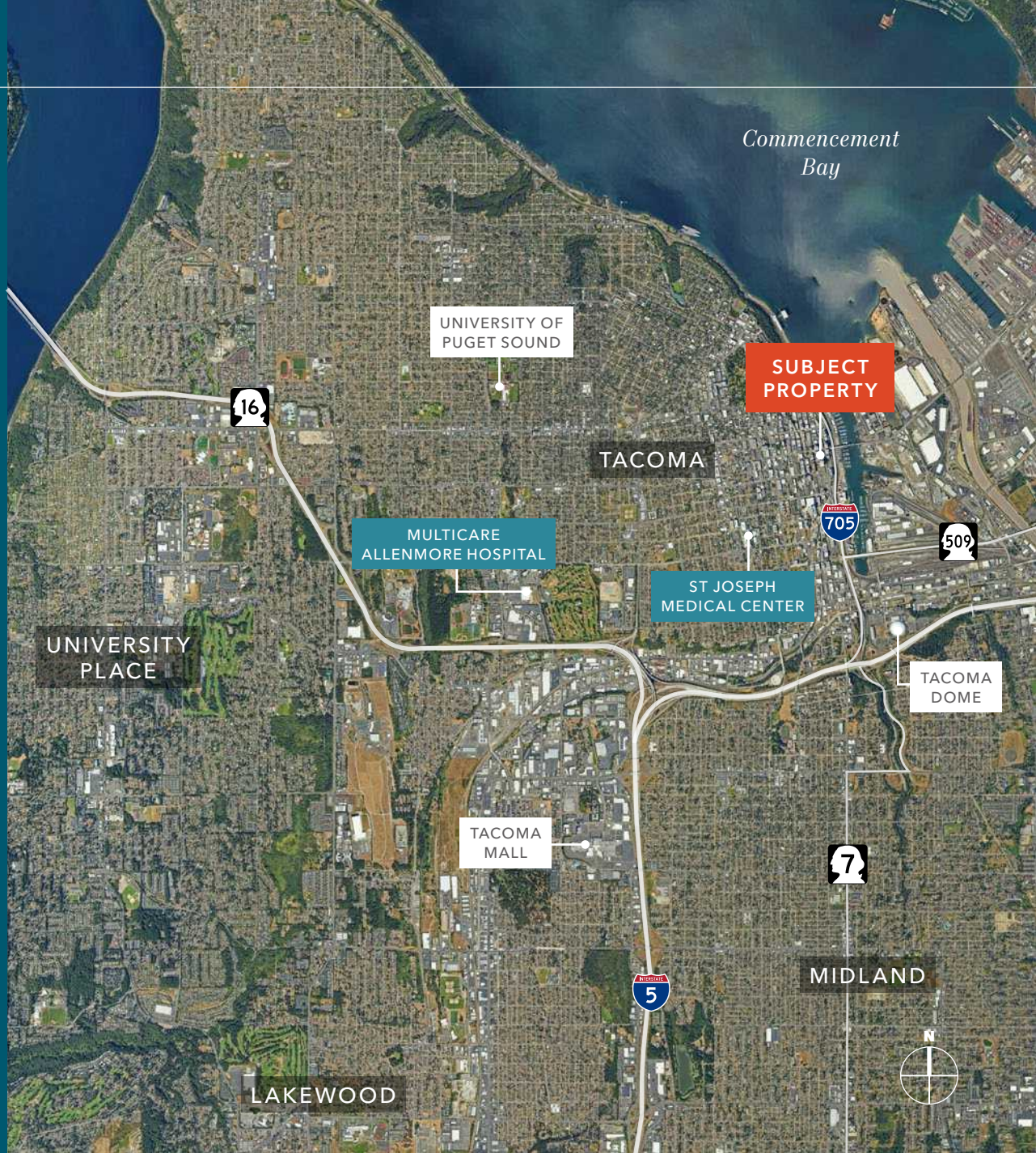
2023	1 Mile	3 Miles	5 Miles
Population	18,703	92,950	264,681
Median HH Income	\$63,492	\$84,213	\$89,871

# NOW

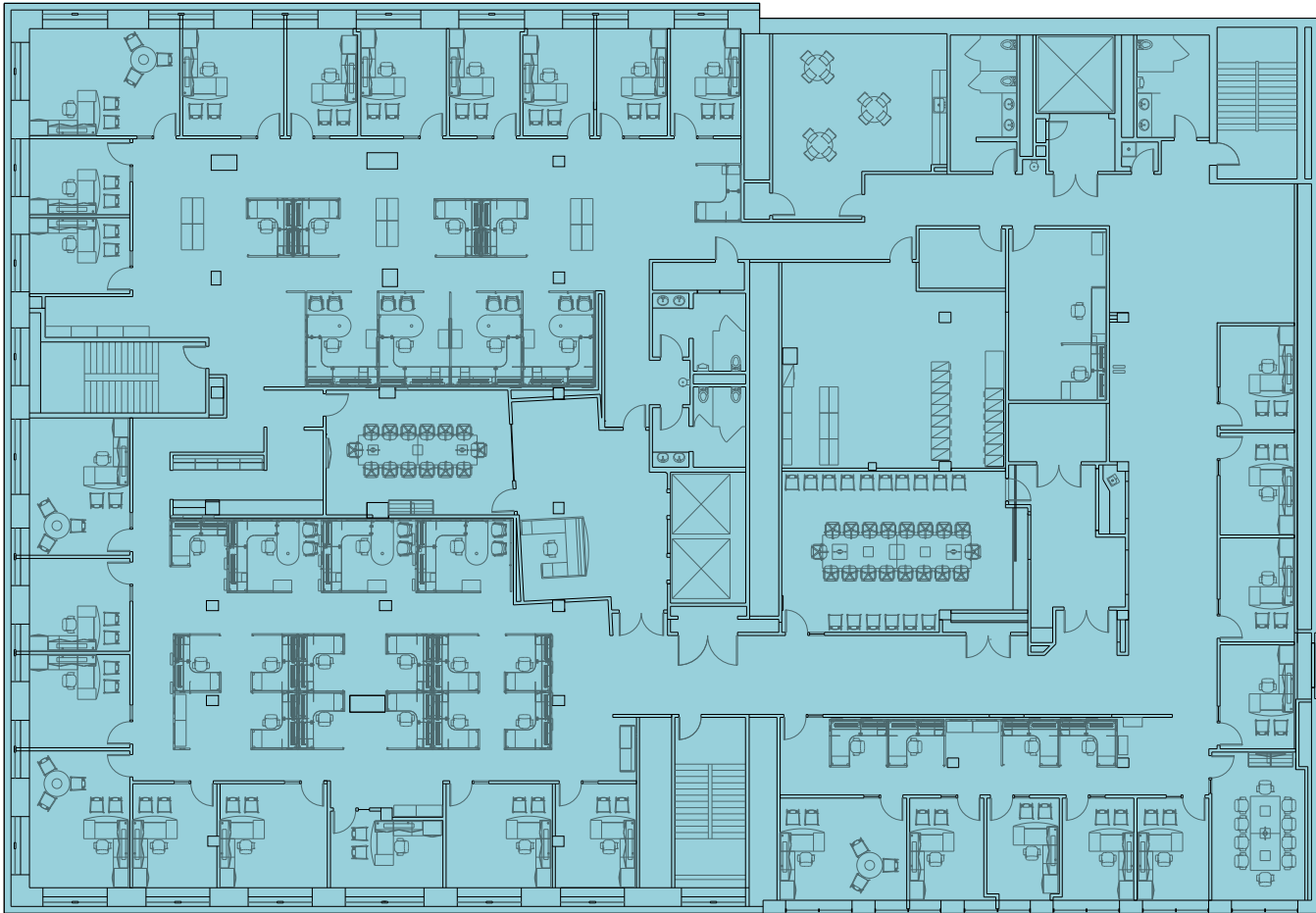
AVAILABLE

# CONTACT

BROKERS FOR MORE  
INFORMATION



## SECOND FLOOR PLAN



### *SUITE 200*

AVAILABLE

### *20,253 SF*

AVAILABLE

### *\$21.00*

PER RSF, FULL SERVICE



SUBJECT  
PROPERTY

*Exclusively listed by*

**DREW FRAME, SIOR**  
Senior Vice President  
253.948.7032  
drew.frame@kidder.com

**WILL FRAME**  
Executive Vice President  
253.948.6895  
will.frame@kidder.com

**KIDDER.COM**